

Submit to Appropriate
District Office
State Lease - 4 copies
Fee Lease - 3 copies

State of New Mexico
Energy, Minerals and Natural Resources Department

OIL CONSERVATION DIVISION

P.O. Box 2088
Santa Fe, New Mexico 87504-2088

Form C-102
Revised 1-1-89

RECEIVED
SEP 10 1992

OIL CON. DIV
DIST. 3

DISTRICT I
P.O. Box 1980, Hobbs, NM 88240

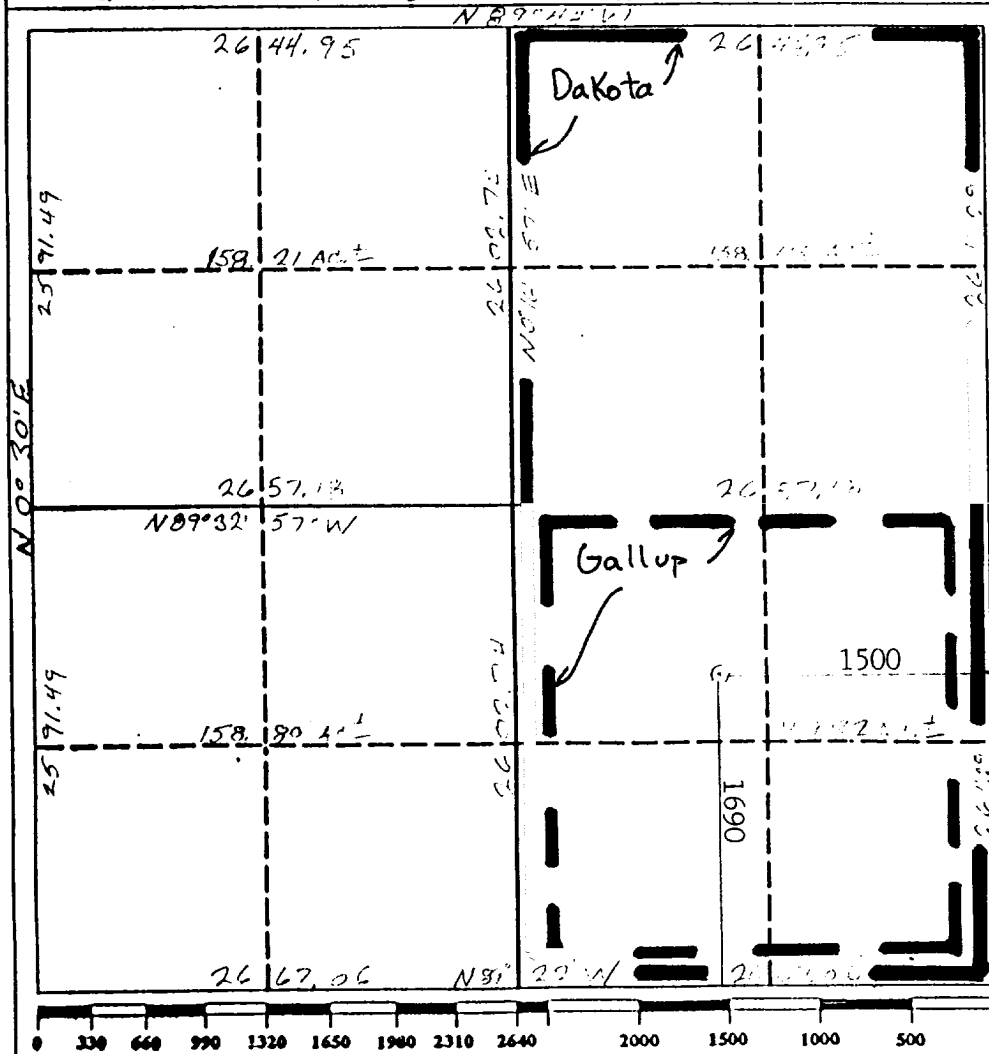
DISTRICT II
P.O. Drawer DD, Artesia, NM 88210

DISTRICT III
1000 Rio Brazos Rd., Aztec, NM 87410

WELL LOCATION AND ACREAGE DEDICATION PLAT

All Distances must be from the outer boundaries of the section

Operator UNOCAL			Lease RINCON UNIT		Well No. #182 E
Unit Letter J	Section 26	Township 27 N	Range 6 W	County NMMP RIO ARriba	
Actual Footage Location of Well: 1690 feet from the SOUTH line and 1500 feet from the EAST line					
Ground level Elev. 6644	Producing Formation Gallup/Dakota		Pool Undesignated/Basin		Dedicated Acreage 38/4 29.32 32 317.5
<p>1. Outline the acreage dedicated to the subject well by colored pencil or hatchure marks on the plat below.</p> <p>2. If more than one lease is dedicated to the well, outline each and identify the ownership thereof (both as to working interest and royalty).</p> <p>3. If more than one lease of different ownership is dedicated to the well, have the interest of all owners been consolidated by communization, unitization, force-pooling, etc.? <input checked="" type="checkbox"/> Yes <input type="checkbox"/> No If answer is "yes" type of consolidation Unitization</p> <p>If answer is "no" list the owners and tract descriptions which have actually been consolidated. (Use reverse side of this form if necessary.)</p> <p>No allowable will be assigned to the well until all interests have been consolidated (by communization, unitization, forced-pooling, or otherwise) or until a non-standard unit, eliminating such interest, has been approved by the Division.</p>					



OPERATOR CERTIFICATION

I hereby certify that the information contained herein is true and complete to the best of my knowledge and belief.

Signature **Robert C. Frank**
Printed Name **Robert C. Frank**
Position **Agent**
Company **Union Oil Company of California**
Date **August 4, 1992**

SURVEYOR CERTIFICATION

I hereby certify that the well location shown on this plat was plotted from field notes of actual surveys made by me or under my supervision, and that the same is true and correct to the best of my knowledge and belief.

Date Survey **JULY 20 1992**
Signature **Cecil B. Tullis**
Printed Name **Cecil B. Tullis**
Professional Land Surveyor
New Mexico
Registered Professional Land Surveyor
0672

Exhibit I