

UNITED STATES  
DEPARTMENT OF THE INTERIOR  
BUREAU OF LAND MANAGEMENT

APPLICATION FOR PERMIT TO DRILL, DEEPEN, OR PLUG BACK

1a. TYPE OF WORK  
DRILL ☒ DEEPEN ☐ PLUG BACK ☐  
b. TYPE OF WELL  
OIL WELL ☐ GAS WELL ☒ OTHER ☐ SINGLE ZONE ☐ MULTIPLE ZONE ☒

2. NAME OF OPERATOR  
Union Oil Company of California

3. ADDRESS OF OPERATOR  
3300 N. Butler Ste 200

4. LOCATION OF WELL (Report location clearly and in accordance with any special requirements.)  
At surface Farmington, NM 87401

At proposed prod. zone 790 FNL & 790 FWL  
Same

14. DISTANCE IN MILES AND DIRECTION FROM NEAREST TOWN OR POST OFFICE  
21 miles SE of Blanco, NM

10. DISTANCE FROM PROPOSED LOCATION TO NEAREST PROPERTY OR LEASE LINE, FT. (Also to nearest drig. unit line, if any)  
790

18. DISTANCE FROM PROPOSED LOCATION TO NEAREST WELL, DRILLING, COMPLETED, OR APPLIED FOR, ON THIS LEASE, FT.  
875

21. ELEVATIONS (Show whether DK, RT, GR, etc.)  
6583' Gr.

23. This action is subject to technical and procedural review pursuant to 43 CFR 3160.2 and appeal pursuant to 43 CFR 3160.4.

SIZE OF HOLE	SIZE OF CASING	WEIGHT PER FOOT	SETTING DEPTH
12.25"	8.625"	24#	350
7.875"	5.50"	17#	7753

loss control tail with 100 sxs (117 cuft) Cl. B. 2nd stage 450 sxs+/- (1265 cuft) Cl. B with 3% sodium metasilicate tailed with 100 sxs (117 cuft) Cl B.

Union Oil Company of California wishes to advise that we intend to drill a 12.25" hole to 350' with mud. Run 8.625" casing to 350' and cement to surface with 250 sxs+/- Cl B cement. Nipple up and test BOP. Drill 7.875" hole to 7753' with mud. Log well. Run 5.5" production casing to 7753'. Cement with 550 sxs+/- 50/50/2 Poz. Tailed with 100 sxs Cl. B. Second stage 450 sxs+/- Cl. B with 3% sodium metasilicate, tailed by 100 sxs Cl.B. Perforate pay section in the Gallup and Dakota Sands. Stimulate as required.

IN ABOVE SPACE DESCRIBE PROPOSED PROGRAM: If proposal is to deepen or plug back, give data on present productive zone and proposed new productive zone. If proposal is to drill or deepen directionally, give pertinent data on subsurface locations and measured and true vertical depth. Give blowout preventer program, if any.

SIGNED Robert C. Frank TITLE Agent DATE 8/4/92

(This space for Federal or State office use)

PERMIT NO. \_\_\_\_\_ APPROVAL DATE \_\_\_\_\_

APPROVED BY \_\_\_\_\_ TITLE \_\_\_\_\_

CONDITIONS OF APPROVAL, IF ANY:

NMOCD

\*See Instructions On Reverse Side

Title 18 U.S.C. Section 1001, makes it a crime for any person knowingly and willfully to make to any department or agency of the United States any false, fictitious or fraudulent statements or representations as to any matter within its jurisdiction.

5. LEASE DESIGNATION AND SERIAL NO.  
SF-079364  
6. IF INDIAN, ALLOTTEE OR TRIBE NAME  
N/A  
7. UNIT AGREEMENT NAME  
Rincon Unit  
8. FARM OR LEASE NAME  
Rincon Unit  
9. WELL NO.  
135 E  
10. FIFTH AND DEEP OR WILDCAT  
Undes Gal Basin DK  
11. SEC., T., R., M., OR BLK. AND SURVEY OR AREA  
D Sec. 29-T27N-R6W  
12. COUNTY OR PARISH  
Rio Arriba NM  
13. STATE  
NM  
14. NO. OF ACRES IN LEASE  
2605.33  
15. NO. OF ACRES ASSIGNED TO THIS WELL  
NW/4-160.49 100/320  
16. ROTARY OR CANNY  
20820.91  
Rotary  
17. APPROX. DATE WORK WILL START  
09/01/92

SUBJECT TO COMPLIANCE WITH APPLICABLE GENERAL REQUIREMENTS  
250sxs+/- Cl. B (293 cuft)  
550sxs+/- (699 cuft) 50/50/2 Poz containing gel, dispersant, fluid

RECEIVED  
BLM  
AUG-5 PM 2:15  
FARMINGTON, NM

Submit to Appropriate  
District Office  
State Lease - 4 copies  
Fee Lease - 3 copies

DISTRICT I  
P.O. Box 1980, Hobbs, NM 88240

DISTRICT II  
P.O. Drawer DD, Artesia, NM 88210

DISTRICT III  
1000 Rio Brazos Rd., Aztec, NM 87410

State of New Mexico  
Energy, Minerals and Natural Resources Department

# OIL CONSERVATION DIVISION

P.O. Box 2088  
Santa Fe, New Mexico 87504-2088

RECEIVED  
SEP 10 1992  
OIL CON. DIV.  
DIST. 3

## WELL LOCATION AND ACREAGE DEDICATION PLAT

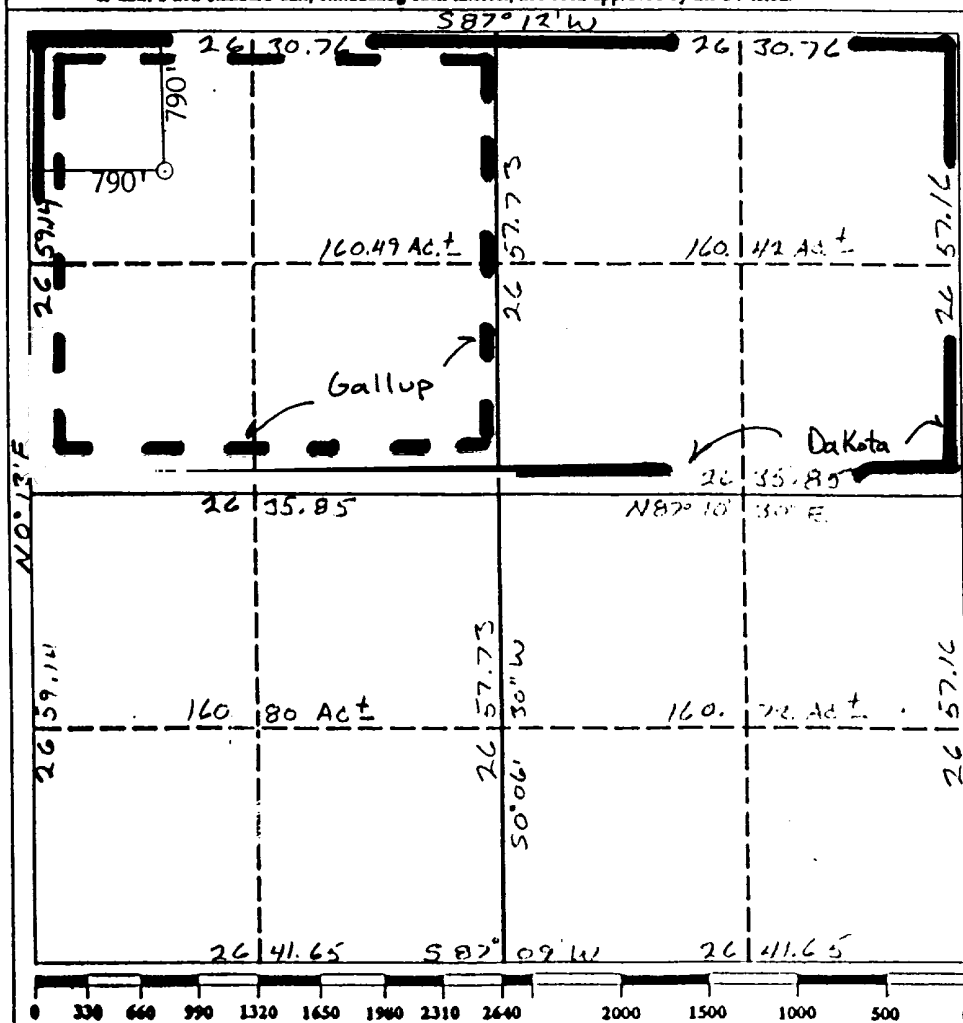
All Distances must be from the outer boundaries of the section

Operator <b>UNOCAL</b>			Lease <b>RINCON</b>		Well No. <b>135E</b>
Unit Letter <b>D</b>	Section <b>29</b>	Township <b>27 North</b>	Range <b>6 West</b>	County <b>NMPM Rio Arriba</b>	
Actual Footage Location of Well: <b>790</b> feet from the <b>North</b> line and <b>790</b> feet from the <b>West</b> line					
Ground level Elev. <b>6583</b>	Producing Formation <b>Gallup/Dakota</b>		Pool <b>Undesignated/Basin</b>	Dedicated Acreage: <b>N/2 320.91</b> Acres	

- Outline the acreage dedicated to the subject well by colored pencil or hatchure marks on the plat below.
- If more than one lease is dedicated to the well, outline each and identify the ownership thereof (both as to working interest and royalty).
- If more than one lease of different ownership is dedicated to the well, have the interest of all owners been consolidated by communitization, unitization, force-pooling, etc.?  
☒ Yes ☐ No If answer is "yes" type of consolidation **Unitization**

If answer is "no" list the owners and tract descriptions which have actually been consolidated. (Use reverse side of this form if necessary.)

No allowable will be assigned to the well until all interests have been consolidated (by communitization, unitization, forced-pooling, or otherwise) or until a non-standard unit, eliminating such interest, has been approved by the Division.



### OPERATOR CERTIFICATION

I hereby certify that the information contained herein is true and complete to the best of my knowledge and belief.

Signature **Robert C. Frank**  
Printed Name **Robert C. Frank**  
Position **Agent**  
Company **Union Oil Company of California**  
Date **August 4, 1992**

### SURVEYOR CERTIFICATION

I hereby certify that the well location shown on this plat was plotted from field notes of actual surveys made by me or under my supervision, and that the same is true and correct to the best of my knowledge and belief.

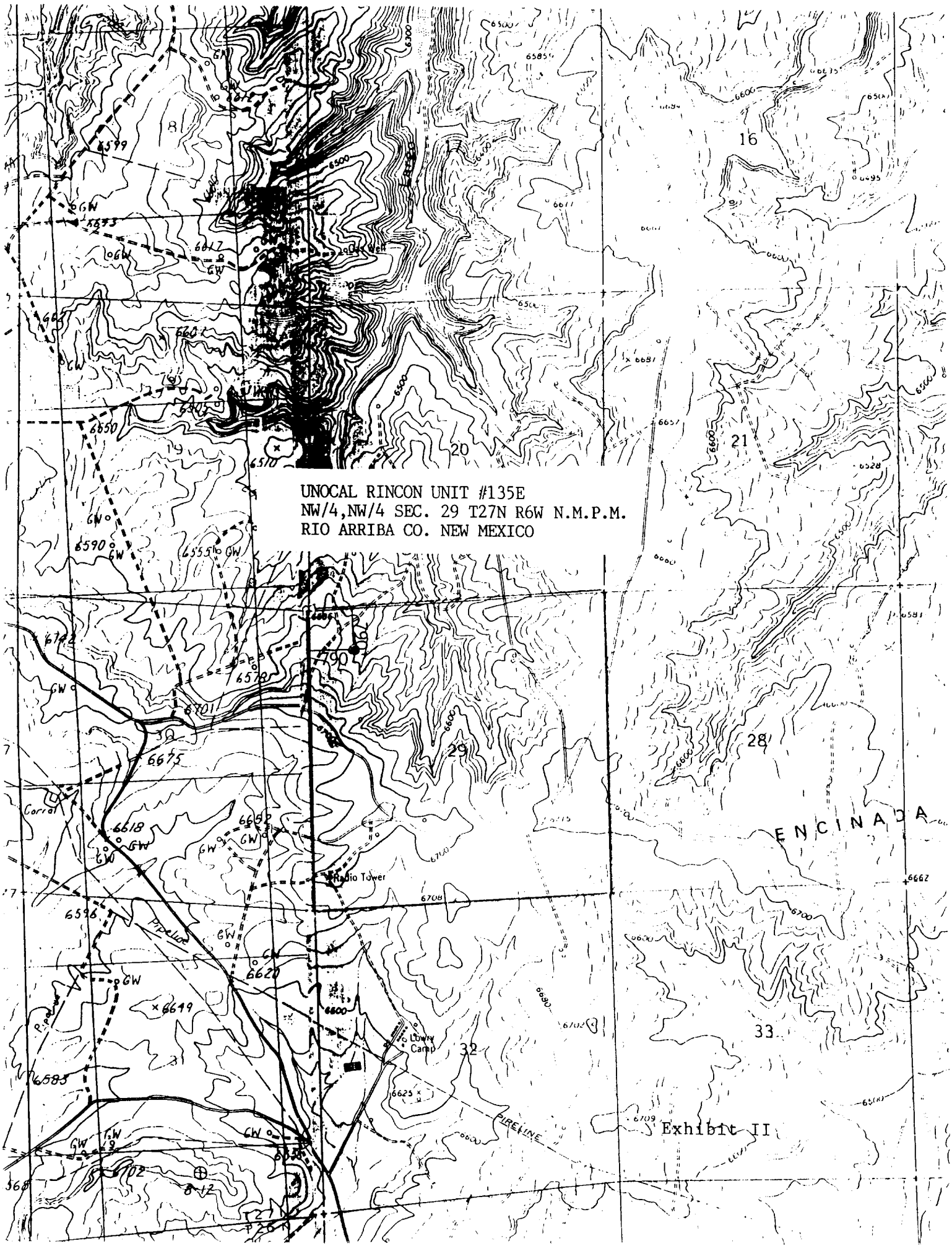
Date Surveyed **July 22, 1992**

Signature **Cecil B. Tullis**

Professional Surveyor

Certificate No. **9672**

Exhibit I



UNOCAL RINCON UNIT #135E  
NW/4, NW/4 SEC. 29 T27N R6W N.M.P.M.  
RIO ARRIBA CO. NEW MEXICO

The map is a detailed topographic representation of a mountainous region. It features numerous contour lines indicating elevation, with labels such as 6500, 6600, 6700, and 6800. The map is divided into sections, with numbers 16, 19, 20, 21, 28, 29, 32, and 33 visible. A prominent feature is a large, dark, irregularly shaped area in the upper left, possibly representing a forest or a specific geological formation. Various landmarks are marked, including a 'Radio Tower' near section 29, a 'Pipeline' running through the lower left, and a 'Camp' near section 32. The map also shows a grid system with letters and numbers along the edges. The text 'ENCINADA' is visible on the right side, and 'Exhibit II' is at the bottom right.

ENCINADA

Exhibit II