

Blm
rdh

~~NO APP ENT~~
5-4-94

STATE OF NEW MEXICO
ENERGY, MINERALS AND NATURAL RESOURCES DEPARTMENT
OIL CONSERVATION DIVISION

DRUG FREE

TELEPHONE
FACSIMILE
MAIL ROOM

MAIL ROOM
TELEPHONE
FACSIMILE

April 26, 1994

Union Oil Company of California (UNOCAL)
P.O. Box 2620
Casper, WY 82602-2620

Attention: Jim Benson

Administrative Order NSL-3379

Dear Mr. Benson:

Reference is made to your application dated February 16, 1994 for an unorthodox gas well location for both the Basin-Dakota and Undesignated Largo-Gallup Pools for your proposed Rincon Unit Well No. 303. Said well is to be drilled 2180 feet from the North line and 535 feet from the West line (Unit E) of Section 33, Township 27 North, Range 7 West, NMPM Rio Arriba County, New Mexico.

The ^{1/2}~~3/4~~ of said Section 33 is to be dedicated to said well forming a standard 320-acre gas spacing and proration unit for both pools.

By the authority granted me under the provisions of Rule 2(c) of the Special Rules and Regulations for the Basin-Dakota Pool, as promulgated by Division Order No. R-8170, as amended; the applicable rules governing the Largo-Gallup Pool under Division Order No. R-2462, as amended; and General Rule 104.F(1), the aforementioned unorthodox gas well location is hereby approved.

Sincerely,

William J. LeMay
Director

WJL/MES/amg

cc: Oil Conservation Division - Aztec
US Bureau of Land Management - Farmington

RECEIVED
MAY - 2 1994
OIL CON. DIV.
DIST. 3

Ernie Busch

From: Ernie Busch
To: Mike Stogner
Subject: UNOCAL (NSL)
Date: Monday, March 07, 1994 8:20AM
Priority: High

WELL NAME: RINCON UNIT #303
LOCATION: E-33-27N-07W
FOOTAGE: 2180' FNL; 535' FWL
RECOMMEND: APPROVAL

Control Number: 023364 POINT OF DISPOSITION AND WELL COMPLETION INFORMATION

OGRID: 021042 Operator Name: SNYDER OIL CORP NW
1625 BROADWAY ST SU 2200 DENVER CO 80202

C-115 Filer Contact Name: _____ Phone: () _____ FAX: () _____

POD: 2292710 Product Type: OIL Facility Type: 03 Location: K 19 25N 09W County SAN JUAN

OGRID Name _____ OGRID Name _____

Authorized Transporter(s): 009018 GIANT REFINERY

Description of POD (40 characters or less): _____

POD: 2292750 Product Type: GAS Facility Type: 01 Location: K 19 25N 09W County SAN JUAN

OGRID Name _____ OGRID Name _____

Authorized Transporter(s): 008503 GAS CO. OF NEW MEXICO

Description of POD (40 characters or less): _____

POD: 2292750 Product Type: WATER Facility Type: 05 Location: K 19 25N 09W County SAN JUAN

Description of POD (40 characters or less): _____

WELL COMPLETIONS

Code Pool Name Code Producing Property Name API Well No. Location Well

71599 BASIN DAKOTA (PRORATED GAS) 010272 MILLS _____ 30-045-05266 K 19 25N 09W 001

Unocal Oil & Gas Division
Unocal Corporation
900 Werner Court, P.O. Box 2620
Casper, Wyoming 82602-2620
Telephone (307) 234-1563

UNOCAL 76

February 16, 1994

State of New Mexico
Oil Conservation Division
310 Old Santa Fe Trail
Santa Fe, NM 87503

RECEIVED

FEB 22 1994

OIL CON. DIV
DIST 3

Gentlemen:

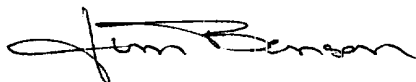
Union Oil Company of California (UNOCAL) requests permission for a nonstandard location for our Rincon Unit No. 303 well, located 2180' FNL, 535' FWL, Section 33, T27N, R7W, Rio Arriba County, New Mexico.

This well is a proposed dual Basin Dakota/Largo Gallup well that does not conform, as staked, to a "standard" location being approximately 255' too close to the west line. It is not feasible to move the location further to the east because of an existing E.P.N.G. pipeline that is approximately 25' from the edge of the location and also there is an existing 40'-50' cliff approximately 100' east of the existing pipeline. See attachments. There are no existing pads/locations in the immediate area on which to drill this proposed well.

The offset lease owner, Meridian Oil, Inc., has been contacted by certified letter requesting waiver of objection to this proposed unorthodox location.

If you have any questions, please contact me at (307) 234-1563, ext. 116. Thank you for your help in this matter.

Sincerely,



Jim Benson
Drilling Superintendent

Attachments
cc: Ernie Busch, Aztec, NM

JBB:co

Submit to Appropriate
District Office
State Lease - 4 copies
Fee Lease - 3 copies

OIL CONSERVATION DIVISION

P.O. Box 2088
Santa Fe, New Mexico 87504-2088

DISTRICT I
P.O. Box 1800, Hobbs, NM 88240

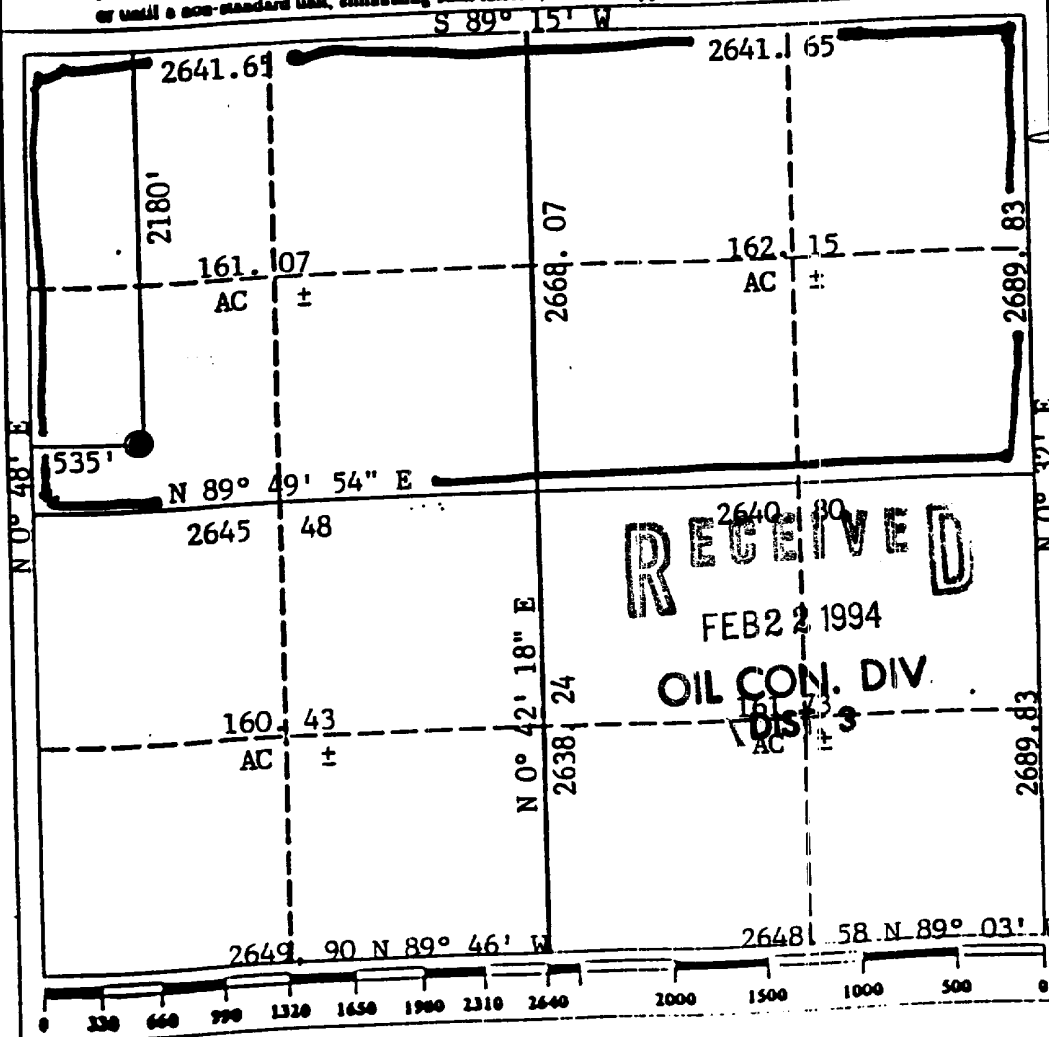
DISTRICT II
P.O. Drawer DD, Artesia, NM 88210

DISTRICT III
1000 Rio Brazos Rd., Aztec, NM 87410

WELL LOCATION AND ACREAGE DEDICATION PLAT
All Distances must be from the outer boundaries of the section

Operator UNOCAL		Lease RINCON		Well No. 303	
Unit Letter E	Section 33	Township 27N	Range 7 NMPM	County RIO ARRIBA	
Actual Footage Location of Well: 2180 feet from the NORTH line and 535 feet from the WEST line			Dedicated Acreage: 320 Acres		
Ground level Elev. 6756		Producing Formation Dakota/Gallup	Pool Basin/Largo		

- Outline the acreage dedicated to the subject well by colored pencil or hatchure marks on the plat below.
- If more than one lease is dedicated to the well, outline each and identify the ownership thereof (both as to working interest and royalty).
- If more than one lease of different ownership is dedicated to the well, have the interests of all owners been consolidated by communitization, unitization, force-pooling, etc.?
 Yes No If answer is "yes" type of consolidation Unitization
 If answer is "no" list the owners and tract descriptions which have actually been consolidated. (Use reverse side of this form if necessary.)
 No allowable will be assigned to the well until all interests have been consolidated (by communitization, unitization, forced pooling, or otherwise) or until a non-standard unit, eliminating such interest, has been approved by the Division.

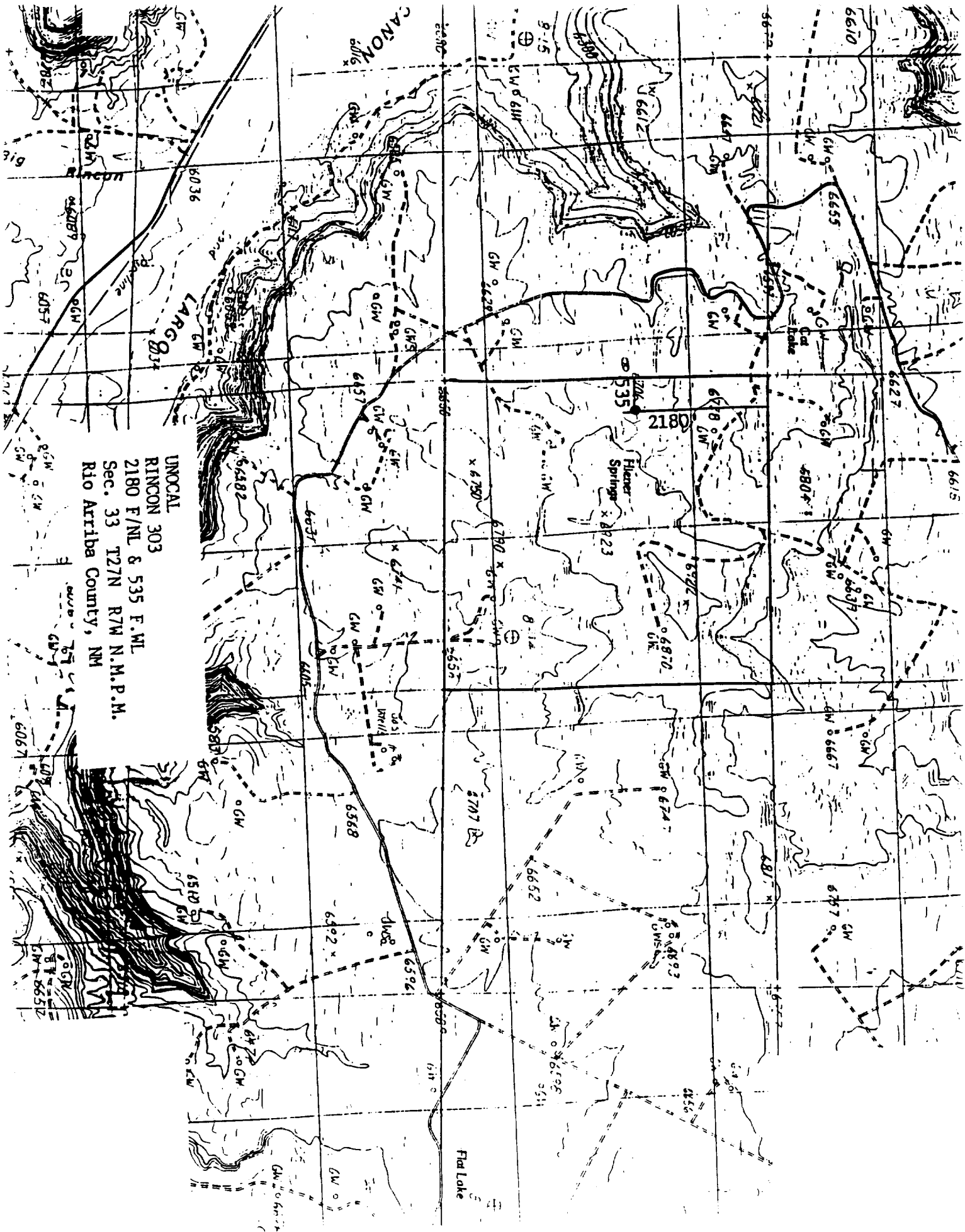


OPERATOR CERTIFICATION
I hereby certify that the information contained herein is true and complete to the best of my knowledge and belief.

Signature: Jim Benson
 Printed Name: Jim Benson
 Position: Drilling Superintendent
 Company: Union Oil Co. of Calif.
 Date: 1/12/94

SURVEYOR CERTIFICATION
I hereby certify that the well location shown on this plat was plotted from field notes of actual surveys made by me or under my supervision, and that the same is true and correct to the best of my knowledge and belief.

Date Surveyed: October 22, 1993
 Signature & Seal of Professional Surveyor: C. B. Tullis
 Certificate No. 96 PROFESSIONAL LAND SURVEYOR



UNCAL
 RINCON 303
 2180 F/NL & 535 F.WL
 Sec. 33 T27N R7W N.M.P.M.
 Rio Arriba County, NM

Cold Pass Rd
CON UNIT

RINSON UNIT

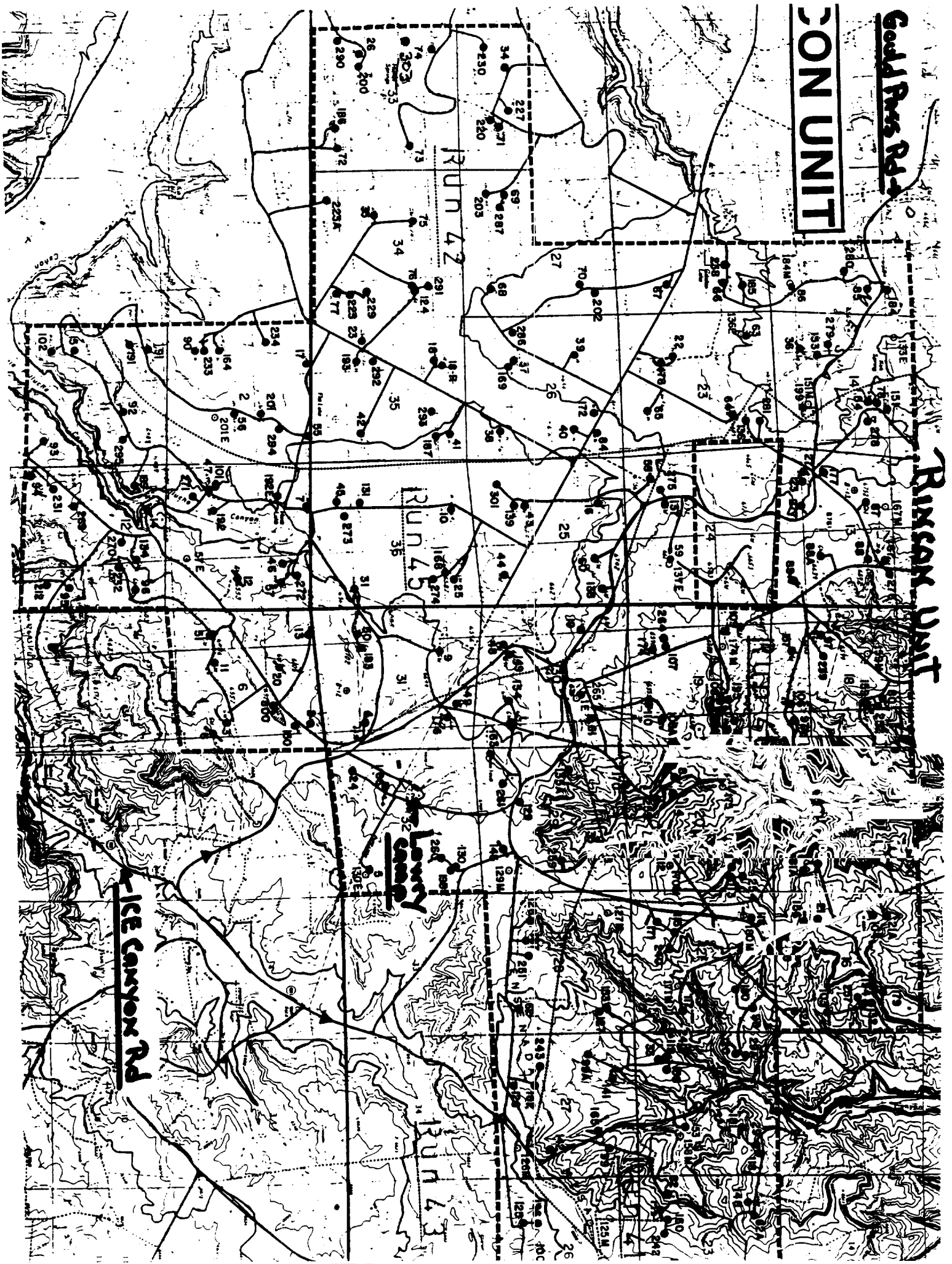
Run 42

Run 45

Lowry Canyon

Run 43

ICE CANYON Rd



RIO

Union 75685
5.095113% El Paso

Union 75683
5.000%

Union 75683
5.000%

Union 75711
2.000%

Union 75711
2.000%

Union 75679
1.352651%

Union 75684
5.000%

Union 75684
5.000%

Union 75684
5.000%

Union 75716
3.458333%

Union 75716
3.458333%

Union 75678
3.561023%

Union 75684
5.000%

Union 75684
5.000%

Union 75684
5.000%

Union 75716
3.458333%

Union 75716
3.458333%

Union 75678
3.561023%

Union 75684
5.000%

Union 75684
5.000%

Union 75684
5.000%

Union 75716
3.458333%

Union 75716
3.458333%

Union 75678
3.561023%

Union 75684
5.000%

Union 75684
5.000%

Union 75684
5.000%

Union 75716
3.458333%

Union 75716
3.458333%

Union 75678
3.561023%

Union 75684
5.000%

Union 75684
5.000%

Union 75684
5.000%

Union 75716
3.458333%

Union 75716
3.458333%

Union 75678
3.561023%

Union 75684
5.000%

Union 75684
5.000%

Union 75684
5.000%

Union 75716
3.458333%

Union 75716
3.458333%

Union 75678
3.561023%

Union 75684
5.000%

Union 75684
5.000%

Union 75684
5.000%

Union 75716
3.458333%

Union 75716
3.458333%

Union 75678
3.561023%

Union 75684
5.000%

Union 75684
5.000%

Union 75684
5.000%

Union 75716
3.458333%

Union 75716
3.458333%

Union 75678
3.561023%

Union 75684
5.000%

Union 75684
5.000%

Union 75684
5.000%

Union 75716
3.458333%

Union 75716
3.458333%

Union 75678
3.561023%

Union 75685
5.095113% El Paso

Union 75683
5.000%

Union 75684
5.000%

Union 75711
2.000%

Union 75716
3.458333%

Union 75679
1.352651%

Union 75684
5.000%

Union 75684
5.000%

Union 75684
5.000%

Union 75716
3.458333%

Union 75716
3.458333%

Union 75678
3.561023%

Union 75684
5.000%

Union 75684
5.000%

Union 75684
5.000%

Union 75716
3.458333%

Union 75716
3.458333%

Union 75678
3.561023%

RILINSON CONCRETE
Union 75716
3.458333%

UNITS OPERATOR
Union 75678
3.561023%

SO. PET. EXP.
Union 75609
8.333333%

STATE
Union 75609
8.333333%

STATE
Union 75609
8.333333%

STATE
Union 75609
8.333333%

STATE
Union 75609
8.333333%

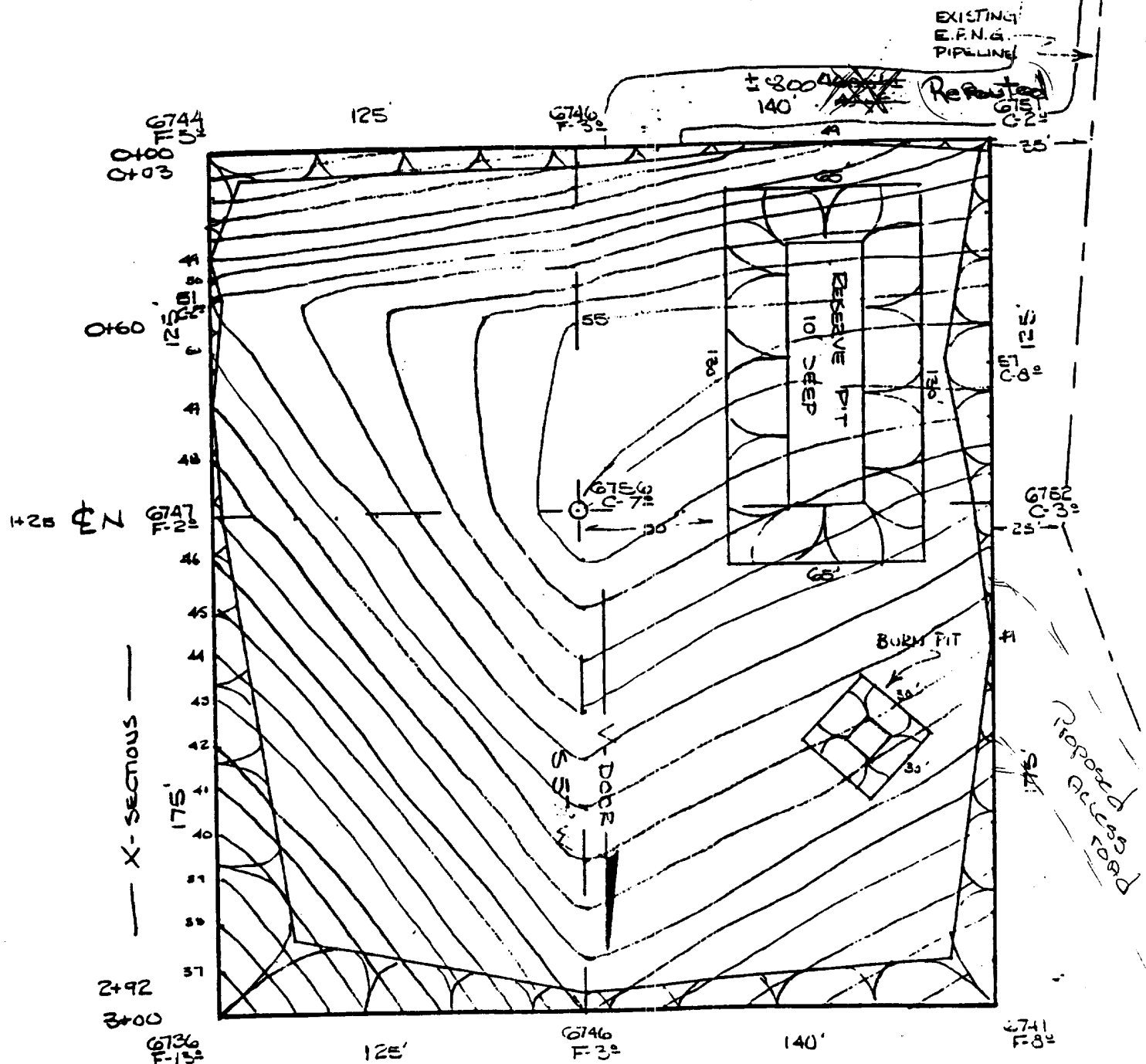
STATE
Union 75609
8.333333%

RIO NM 26N

Scale 1" = 50'

RINCON 303
2180 F/NL & 535 F/WL
Sec. 33 T27N R7W N.M.P.M.
Rio Arriba Co., NM

NOTE: FINISH ELEV. 6749



PAD LAYOUT AND TOPOGRAPHY

* NOTE: FINISH PAD ELEV 6749 *



Large Arroyo

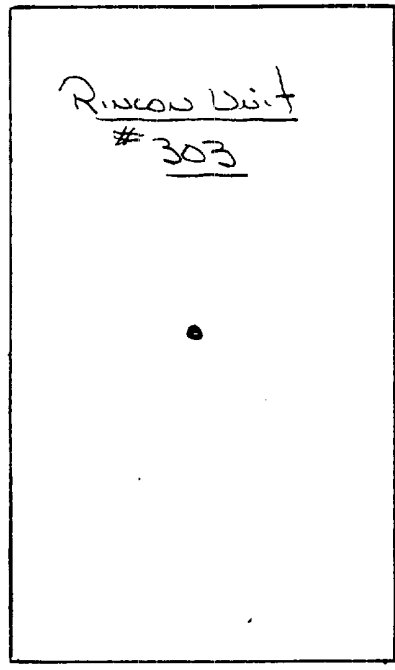
Arroyo

Existing Pipeline

Large Arroyo

Arroyo

Cliff Area



Arroyo

Cliff Area