

**UNITED STATES  
DEPARTMENT OF THE INTERIOR  
BUREAU OF LAND MANAGEMENT**

**APPLICATION FOR PERMIT TO DRILL, DEEPEN, OR PLUG BACK**

1a. TYPE OF WORK  
 DRILL       DEEPEN       PLUG BACK

b. TYPE OF WELL  
 OIL WELL       GAS WELL       OTHER       SINGLE ZONE       MULTIPLE ZONE

2. NAME OF OPERATOR 133182  
**EnRe Corporation** (210) 826-0681

3. ADDRESS OF OPERATOR  
**P.O. Box 6027, San Antonio, Tx. 78209**

4. LOCATION OF WELL (Report location clearly and in accordance with any State requirements.)  
 At surface **2400' FSL & 2100' FEL**  
 At proposed prod. zone **Same**

14. DISTANCE IN MILES AND DIRECTION FROM NEAREST TOWN OR POST OFFICE\*  
**27 air miles S of Dulce, NM**

10. DISTANCE FROM PROPOSED LOCATION TO NEAREST PROPERTY OR LEASE LINE, FT. (Also to nearest drlg. unit line, if any) **8160'**

16. NO. OF ACRES IN LEASE **17,710.81**

17. NO. OF ACRES ASSIGNED TO THIS WELL **40.640**

18. DISTANCE FROM PROPOSED LOCATION TO NEAREST WELL, DRILLING, COMPLETED, OR APPLIED FOR, ON THIS LEASE, FT. **>6000'**

19. PROPOSED DEPTH **6,750'**

20. ROTARY OR CABLE TOOLS **Rotary**

21. ELEVATIONS (Show whether DF, RT, GR, etc.)  
**7,441' ungraded ground**

22. APPROX. DATE WORK WILL START\*  
**Nov. 20, 1994**

5. LEASE DESIGNATION AND SERIAL NO.  
**701-94-0011**

6. IF INDIAN, ALLOTTEE OR TRIBE NAME  
 **Jicarilla Apache**

7. UNIT AGREEMENT NAME  
**N/A**

8. FARM OR LEASE NAME 16410  
**Los Indios Canyon 11 J#1**

9. WELL NO. API #  
30-039-25475

10. FIELD AND FOOT. OF SURVEY  
**W. LOS INDIOS-ENTRADA (O&G)**

11. SEC., T., R., N., OR BLK. AND SURVEY OR AREA  
**W. Puerto Arriba COS**

12. COUNTY OR PARISH  
**Rio Arriba**

13. STATE  
**NM**

17. **J-11-27n-1w NMPM**

23. PROPOSED CASING AND CEMENTING PROGRAM

SIZE OF HOLE	SIZE OF CASING	WEIGHT PER FOOT	SETTING DEPTH	QUANTITY OF CEMENT
12-1/4"	9-5/8"	36# (K-55)	>250'	≈177 cu ft and to surface
8-3/4"	7"	23#(N-80)	5,370'	≈1215 cu ft and to surface
6-1/4"	4-1/2"	11.6# (N-80)	5,270'-6,750'	≈225 cu ft and to 5,270'

**RECEIVED**  
 DEC 27 1994  
 OIL CON. DIV.  
 DIST. 3

OIL ALBUQUERQUE NM  
 NOV 14 1994

cc: BIA, BLM(4 +2 for OCD), EnRe, T. Velarde

IN ABOVE SPACE DESCRIBE PROPOSED PROGRAM: If proposal is to deepen or plug back, give data on present productive zone and proposed new productive zone. If proposal is to drill or deepen directionally, give pertinent data on subsurface locations and measured and true vertical depths. Give blowout preventer program, if any.

24. SIGNED [Signature] TITLE **Consultant** DATE **11-9-94**

(This space for Federal or State office use)

PERMIT NO. \_\_\_\_\_ APPROVAL DATE \_\_\_\_\_

APPROVED BY **Joe Incardine** TITLE **Chief, Lands and Mineral Resources** DATE **DEC 22 1994**

CONDITIONS OF APPROVAL, IF ANY: Hold B-104 FOR MSL

**\*See Instructions On Reverse Side**

District I  
 PO Box 1980, Hobbs, NM 88241-1980  
 District II  
 PO Drawer DD, Artesia, NM 88211-0719  
 District III  
 1000 Rio Brazos Rd., Aztec, NM 87410  
 District IV  
 PO Box 2088, Santa Fe, NM 87504-2088

State of New Mexico  
 Energy, Minerals & Natural Resources Department  
**OIL CONSERVATION DIVISION**  
 PO Box 2088  
 Santa Fe, NM 87504-2088

**RECEIVED**  
 DEC 27 1994  
**OIL CON. DIV.**  
**DIST. 3**

Form C-102  
 Revised February 21, 1994  
 Instructions on back  
 Submit to Appropriate District Office  
 State Lease - 4 Copies  
 Fee Lease - 3 Copies

AMENDED REPORT

**WELL LOCATION AND ACREAGE DEDICATION PLAT**

API Number <i>30-039-25475</i>		Pool Code <i>50440</i> <i>96329</i>		Pool Name <del>West Prieta Chiquito Monans</del> <i>WATERGAT: LOS INDIOS-ENTRADA (OIL)</i>	
Property Code <i>16410</i>	Property Name <i>LOS INDIOS CANYON 11 J</i>			Well Number <del>11 J 1</del>	
OGRID No. <i>133182</i>	Operator Name <i>EnRe Corporation</i>			Elevation <i>7441</i>	

**10 Surface Location**

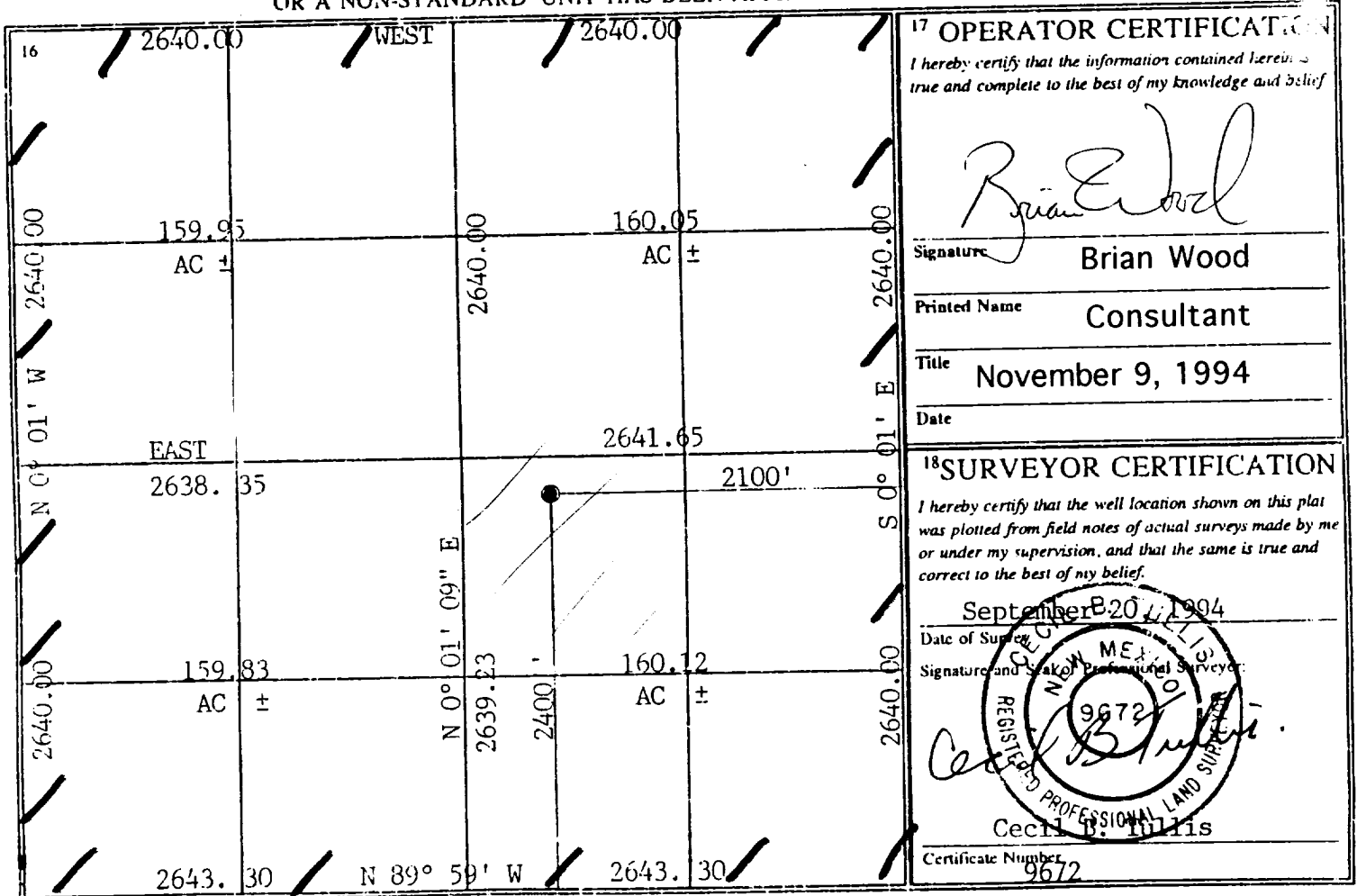
UL or lot no.	Section	Township	Range	Lot Idn	Feet from the	North/South line	Feet from the	East/West line	County
<i>J</i>	<i>11</i>	<i>27N</i>	<i>1W</i>		<i>2400</i>	<i>South</i>	<i>2100</i>	<i>East</i>	<i>Rio Arriba</i>

**11 Bottom Hole Location If Different From Surface**

UL or lot no.	Section	Township	Range	Lot Idn	Feet from the	North/South line	Feet from the	East/West line	County

Dedicated Acres <i>40</i>	Joint or Infill	Consolidation Code	Order No.
------------------------------	-----------------	--------------------	-----------

NO ALLOWABLE WILL BE ASSIGNED TO THIS COMPLETION UNTIL ALL INTERESTS HAVE BEEN CONSOLIDATED OR A NON-STANDARD UNIT HAS BEEN APPROVED BY THE DIVISION



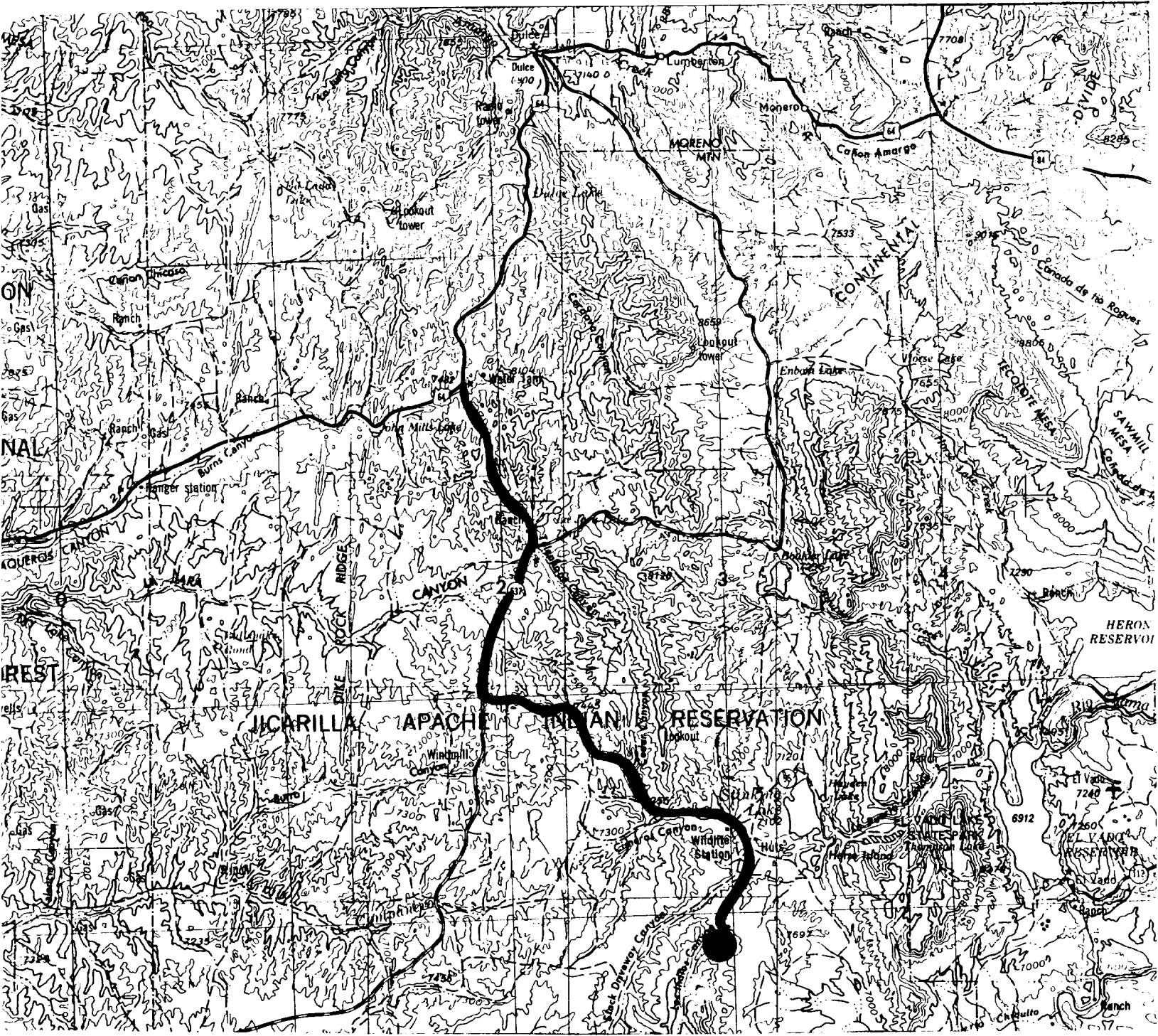
**17 OPERATOR CERTIFICATION**  
 I hereby certify that the information contained herein is true and complete to the best of my knowledge and belief.

*Brian Wood*  
 Signature  
**Brian Wood**  
 Printed Name  
**Consultant**  
 Title  
**November 9, 1994**  
 Date

**18 SURVEYOR CERTIFICATION**  
 I hereby certify that the well location shown on this plat was plotted from field notes of actual surveys made by me or under my supervision, and that the same is true and correct to the best of my belief.

*September 20 1994*  
 Date of Survey  
*Cecil B. Willis*  
 Signature and Seal of Professional Surveyor  
  
**Cecil B. Willis**  
 Certificate Number  
**9672**

EnRe Corporation  
Los Indios Canyon 11 J #1  
2400' FSL & 2100' FEL  
Sec. 11, T. 27 N., R. 1 W.  
Rio Arriba County, NM



PROPOSED WELL: ●  
ACCESS ROUTE: ~

EnRe Corporation  
Los Indios Canyon 11 J #1  
2400' FSL & 2100' FEL  
Sec. 11, T. 27 N., R. 1 W.  
Rio Arriba County, NM

## Surface Use Plan

### 1. DIRECTIONS & EXISTING ROADS (See Pages 12 & 13)

From the junction of US 64 and NM 537, go south 9.1 miles on NM 537.  
Then turn left onto J-16 and go SE 8.5 mi. to J-8.  
Then turn right onto J-8 and go S 1.35 mi. to J-17 at a green LACT.  
Then turn right onto J-17 and go SW 0.9 mi. to J-55.  
Then bear right and go SW 1.25 mi.  
Then turn left and go SE 0.5 mi. to the proposed well.

Roads will be maintained at least equal to their present condition.  
Only upgrading needed will be to limb or fell a few trees along J-55.

### 2. ROAD TO BE BUILT (See Page 14)

Seventy-five feet of new road will be built. It will have a  $\approx 15'$  wide running surface within a maximum disturbed width of 40'. It will be crowned and ditched. No culverts, gates, or cattleguards are needed. Maximum grade is 5%.

### 3. EXISTING WELLS (See PAGE 12)

According to NM Oil Conservation Division records, there are no oil, injection, water, or gas wells within a mile.

### 4. PROPOSED PRODUCTION FACILITIES

The exact type, location, and layout of the production facilities are not known now. It is expected they may include a meter run,