

DISTRICT I
P.O. Box 1980, Hobbs, NM 88240

DISTRICT II
P.O. Drawer DD, Artesia, NM 88210

DISTRICT III
1000 Rio Brazos Rd., Aztec, NM 87410

OIL CONSERVATION DIVISION

P.O. Box 2088
Santa Fe, New Mexico 87504-2088

Filing Inst:
Bottom cr

APPLICATION FOR MULTIPLE COMPLETION

UNION OIL COMPANY OF CALIFORNIA DBA UNOCAL, P.O. BOX 850, BLOOMFIELD, NEW MEXICO 87413

Operator	Address
RINCON UNIT 166E	F SEC 32-T27N-R6W RIO ARRIBA
Lease	Well No. Unit Ltr. -- Sec -- Twp -- Rge County

All applicants for multiple completion must complete items 1 and 2 below.

1. The following facts are submitted:	Upper Zone	Intermediate Zone	Lower Zone
a. Name of Pool and Formation	BLANCO MESA VERDE		BASIN DAKOTA
b. Top and Bottom of Pay Section (Perforations)	4812' - 5601'		7343' - 7592'
c. Type of production (Oil or Gas)	GAS		GAS
d. Method of Production (Flowing or Artificial Lift)	FLOWING		FLOWING
e. Daily Production <input type="checkbox"/> Actual <input checked="" type="checkbox"/> Estimated Oil Bbls. Gas MCF Water Bbls.	430 MCF/D 33 BOPD 21 BWPD	RECEIVED NOV 2 8 1995 OIL CON. DIV. DIST. 3	290 MCF/D 29 BOPD 3 BWPD

2. The following must be attached:

- Diagrammatic Sketch of the multiple Completion, showing all casing strings, including diameters and setting depths, centralizers and/or turbolizers and location thereof, quantities used and top of cement, perforated intervals, tubing strings, including diameters and setting depth, location and type of packers and side door chokes, and such other information as may be pertinent.
- Plat showing the location of all wells on applicant's lease, all offset wells on offset leases, and the names and addresses of operators of all leases offsetting applicant's lease.
- Electrical log of the well or other acceptable log with tops and bottoms of producing zones and intervals of perforation indicated thereon. (If such log is not available at the time application is filed it shall be submitted as provided by Rule 112-A)

OPERATOR:

I hereby certify that the rules and regulations of the Oil Conservation

Signature R. L. Caine
Printed Name & Title R.L. Caine, Production Foreman
Date November 27, 1995 Telephone No. (505)632-1811

OIL CONSERVATION DIVISION

Approved by: 378
Title: SUPERVISOR DISTRICT #3
Date: NOV 2 8 1995

NOTE: If the proposed multiple completion will result in an unorthodox well location and/or a non-standard proration unit in one or more of the producing zones, then separate application for approval of the same should be filed simultaneously with this application.

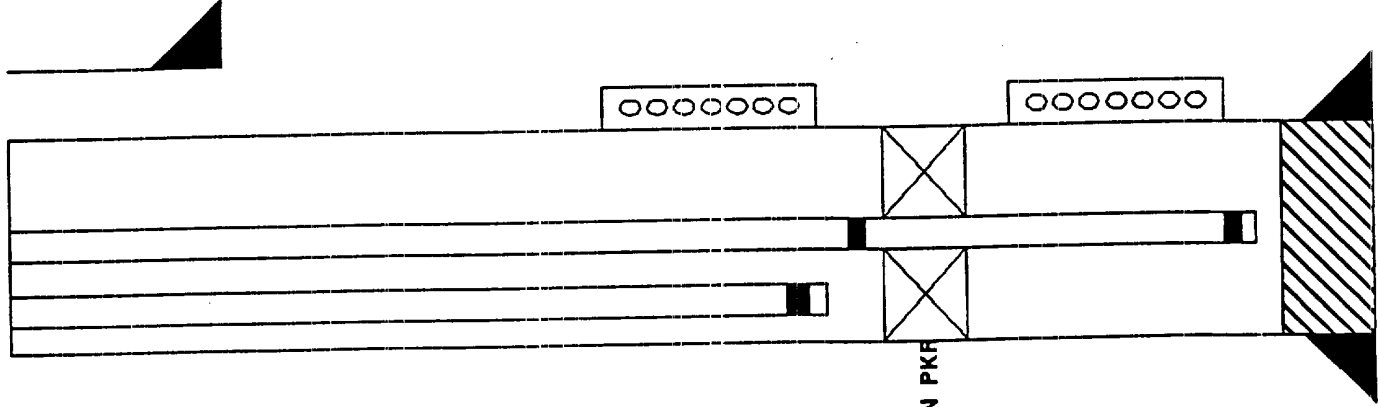
FILING INSTRUCTIONS:

- District Approval** --- See rule 112-A-B --- Submit 4 copies of Form C-107 with attachments to appropriate district office.
- Division Director Administrative Approval** --- See Rule 112-C --- Submit 2 copies of Form C-107 with attachments to Division office in Santa Fe and 2 copies of Form C-107 with attachments to appropriate district office.
- Multiple completions not qualifying of District or Division Director approval** may be set for hearing as outlined in Rule 112-A-E.

RLC/sk1

UNOCAL, RINCON UNIT, RIO ARRIBA CNTY, NM
WELL 166E, 1815' FNL, 1840' FWL, S32, T27N, R6W

BKDB - 16'



9-5/8", 36#, K-55 @ 370'
225 SXS G

UPPER MESA VERDE 4876' - 4940' 2 SPF
30 KIPS 16/30 BRADY SAND

LOWER MESA VERDE 5364' - 5485' 1 SPF
61 KIPS 16/30 BRADY SAND

GRANEROS 7356' - 7404' 2 SPF
84.5 KIPS 20/40 OTTOWA

DAKOTA 7483' - 7570' 2SPF
200 KIPS 20/40 OTTOWA SAND

PBTD 7612' (TOP OF FC)

7", 23# & 26#, K-55 @ 7658'

1) 450 SXS 50/50 POZ, 175 SXS G

2) 300 SXS 60/35 POZ, 250 SXS 50/50 POZ, 175 SXS G
CMT TO SURFACE

B. H. LIGGETT 10/30/95

2-3/8" STANDARD SEATING NIPPLE @ 5450'

2-3/8", 4.7#, J-55, EU 8RD W/ SCC @ 5480'

2-3/8"X7" GUIBERSON XL ON-OFF TOOL @ 5502'

2-3/8"X7" GUIBERSON G-6 @ 5564' W/ 12 KIPS WT ON PKR

2-3/8" STANDARD SEATING NIPPLE @ 7536'

2-3/8", 4.7#, J-55, UE 8RD W/ SCC @ 7567'