

District I  
PO Box 1980, Hobbs, NM 88241-1980  
District II  
PO Drawer DD, Artesia, NM 88211-0719  
District III  
1000 Rio Brazos Rd., Aztec, NM 87410  
District IV  
PO Box 2088, Santa Fe, NM 87504-2088

State of New Mexico  
Energy, Minerals & Natural Resources Department

OIL CONSERVATION DIVISION  
PO Box 2088  
Santa Fe, NM 87504-2088

Form C-101  
Revised February 21, 1994  
Instructions on back  
Submit to Appropriate District Office  
State Lease - 6 Copies  
Fee Lease - 5 Copies

RECEIVED

☐ AMENDED REPORT

APPLICATION FOR PERMIT TO DRILL, RE-ENTER, DEEPEN, PLUG BACK, OR ADD A ZONE

Operator Name and Address: CONOCO INC. 10 DESTA DRIVE STE 100W MIDLAND, TEXAS 79705		OIL CON. DIV. DIST. 3	OGRID Number 005073
Property Code 016608	Property Name San Juan 28-7 Unit	API Number 30-039-25544	Well No. 130M

7 Surface Location

UL or lot no.	Section	Township	Range	Lot Ida	Feet from the	North/South line	Feet from the	East/West line	County
D	2	27N	7W		808	North	1182	West	Rio Arriba

8 Proposed Bottom Hole Location If Different From Surface

UL or lot no.	Section	Township	Range	Lot Ida	Feet from the	North/South line	Feet from the	East/West line	County
Proposed Pool 1 72319 - Blanco Mesaverde W/318.96					Proposed Pool 2 71599 - Basin Dakota W/318.96				

Work Type Code	Well Type Code	Cable/Rotary	Lease Type Code	Ground Level Elevation
N	G	R	S	6120'
Multiple	Proposed Depth	Formation	Contractor	Spud Date
No	7553'	Mesaverde/Dakota	NA	1/1/96

21 Proposed Casing and Cement Program

Hole Size	Casing Size	Casing weight/foot	Setting Depth	Sacks of Cement	Estimated TOC
12-1/4"	9-5/8"	36#	280' 320'	155 sxs	Surface
8-3/4"	7"	23#	3043'	575 sxs	Surface
6-1/4"	4-1/2"	11.6#	7553'	435 sxs	Surface

Describe the proposed program. If this application is to DEEPEN or PLUG BACK give the data on the present productive zone and proposed new productive zone. Describe the blowout prevention program, if any. Use additional sheets if necessary.

A vertical wellbore to be downhole commingled following the acquisition of sufficient production test data for allocation purposes. Downhole commingling has already been approved by NMOC Order No. R-10476. It will be drilled and equipped according to the following attachments:

1. Well Location & Acreage Dedication Plat (C-102).
2. Proposed Well Plan Outline.
3. Cementing and Mud Programs.
4. Blowout Preventer Hookup.
5. Well, Topo, and road maps.

I hereby certify that the information given above is true and complete to the best of my knowledge and belief.

Signature: Jerry W. Hoover

Printed Name: Jerry W. Hoover

Title: Sr. Conservation Coordinator

Date: 10/19/95

Phone: (915) 686-6548

OIL CONSERVATION DIVISION

Approved by: Emile Busch 10-25-95

Title: DEPUTY OIL & GAS INSPECTOR, DIST. #3

Approval Date: OCT 25 1995 Expiration Date: OCT 25 1996

Conditions of Approval:  
Attached ☐

District I  
PO Box 1980, Hobbs, NM 88241-1980  
District II  
PO Drawer DD, Artesia, NM 88211-0719  
District III  
1000 Rio Brazos Rd., Aztec, NM 87410  
District IV  
PO Box 2088, Santa Fe, NM 87504-2088

State of New Mexico  
Energy, Minerals & Natural Resources Department

OIL CONSERVATION DIVISION  
PO Box 2088  
Santa Fe, NM 87504-2088

Form C-102  
Revised February 21, 1994  
Instructions on back  
Submit to Appropriate District Office  
State Lease - 4 Copies  
Fee Lease - 3 Copies

☐ AMENDED REPORT

WELL LOCATION AND ACREAGE DEDICATION PLAT

<sup>1</sup> API Number 30-039-25544		<sup>2</sup> Pool Code 72319 / 71599		<sup>3</sup> Pool Name BLANCO MESAVERDE / BASIN DAKOTA	
<sup>4</sup> Property Code 016608		<sup>5</sup> Property Name SAN JUAN 28-7 UNIT			<sup>6</sup> Well Number 130M
<sup>7</sup> OGRID No. 005073		<sup>8</sup> Operator Name CONOCO INC.			<sup>9</sup> Elevation 6120

<sup>10</sup> Surface Location

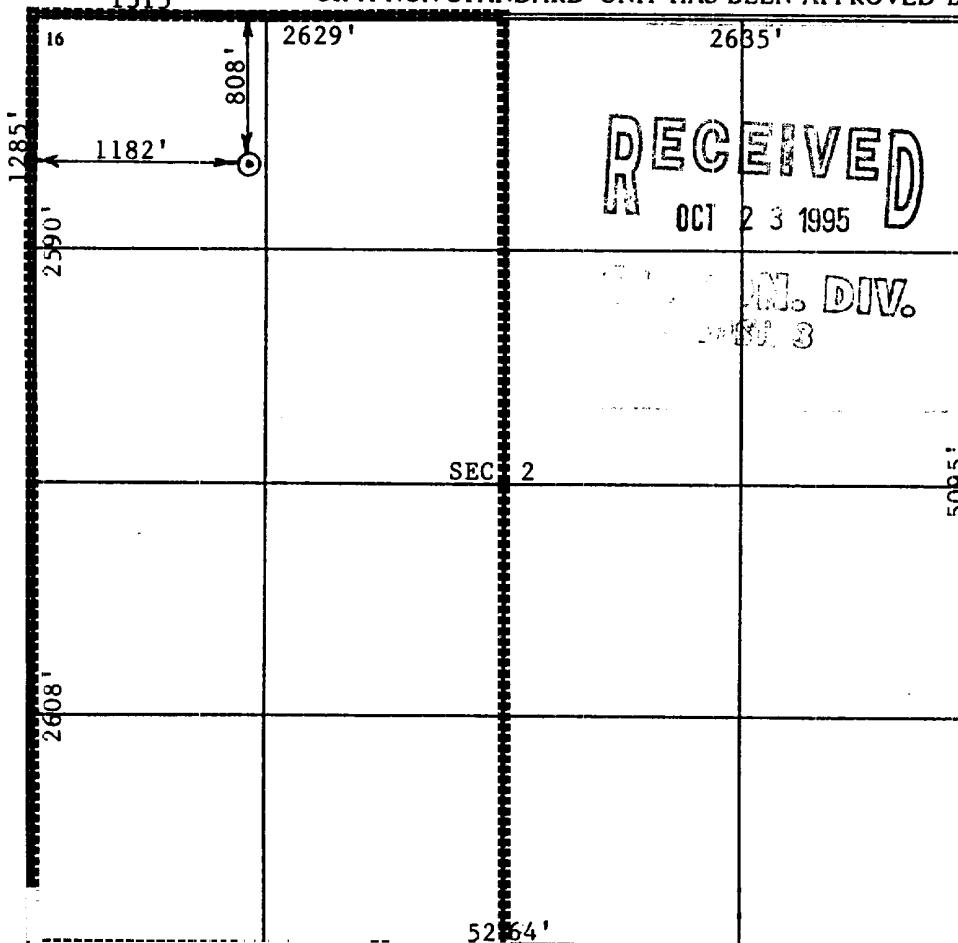
UL or lot no. D	Section 02	Township 27N	Range 07W	Lot Idn	Feet from the 808	North/South line NORTH	Feet from the 1182	East/West line WEST	County R.A.
--------------------	---------------	-----------------	--------------	---------	----------------------	---------------------------	-----------------------	------------------------	----------------

<sup>11</sup> Bottom Hole Location If Different From Surface

UL or lot no.	Section	Township	Range	Lot Idn	Feet from the	North/South line	Feet from the	East/West line	County
---------------	---------	----------	-------	---------	---------------	------------------	---------------	----------------	--------

<sup>12</sup> Dedicated Acres W/2 318.76 320	<sup>13</sup> Joint or Infill	<sup>14</sup> Consolidation Code	<sup>15</sup> Order No.
--	-------------------------------	----------------------------------	-------------------------

NO ALLOWABLE WILL BE ASSIGNED TO THIS COMPLETION UNTIL ALL INTERESTS HAVE BEEN CONSOLIDATED  
OR A NON-STANDARD UNIT HAS BEEN APPROVED BY THE DIVISION



<sup>17</sup> OPERATOR CERTIFICATION

I hereby certify that the information contained herein is true and complete to the best of my knowledge and belief

*[Signature]*  
Signature  
Jerry W. Hoover  
Printed Name  
Sr. Conservation Coordinator  
Title  
9/12/95  
Date

<sup>18</sup> SURVEYOR CERTIFICATION

I hereby certify that the well location shown on this plat was plotted from field notes of actual surveys made by me or under my supervision, and that the same is true and correct to the best of my belief.

11/2/94  
Date of Survey  
Signature and Seal of Professional Surveyer:

*[Signature]*  
Certification Number  
11793  
Professional Surveyor

# PROPOSED WELL PLAN OUTLINE

EST. GL = +6120'

EST. KB = +6133'

WELL NAME: **SJ 28-7 UNIT No. 130M**

LOCATION: **SEC 2, UNIT D, T-27N, R-7W, RIO ARRIBA CO., NM**

TVD IN 1000'	MD	FORMATION TOPS & TYPE	DRILLING PROBLEMS	TYPE OF FORMATION EVALUATION	HOLE SIZE	CASING SIZE DEPTH	FRAC GRAD	FORMATION PRESSURE GRADIENT	MUD WT TYPE	DAYS
0					12-1/4"	9-5/8" 36# K-55 ST&C @ 250'		NORMAL	8.4 - 8.8# SPUD MUD	1
					8-3/4"			8.4 - 9.4#	8.4 - 9.4# GEL/WATER	
1										
		OJAM @ 1930'	POSSIBLE WATERFLOW							
		KRLD @ 2056'								
		FRLD @ 2355'	POSSIBLE GAS FLOW							
		PCCF @ 2743'	POSSIBLE LOST RETURNS							
		LEWS @ 2901'								
3					8-3/4"	7" 23# K-55 LTC @ 3043' (special drift)		8.4 - 9.4#		5
				MUDLOG F/INT. CSG. PT.	6-1/4"				AIR/AIR MIST	
4										
		CLFH/MV @ 4393'	PROBABLE LOST RETURNS IF FLUID IN HOLE							
		MENF @ 4537'								
5		PTLK @ 4977'								
		MNCS @ 5384'								
6										
		GLLP @ 6211'								
		GRHN @ 6904'	POSSIBLE WATERFLOW							
7		GRRS DKOT @ 6963'	POSSIBLE OVERPRESSURE IN DEEP DAKOTA	CASED HOLE LOGS	6-1/4"	4-1/2" 11 6# K-55 LTC @ 7553'		BHP = 2500 psi BHT = 175 deg F	AIR/AIR MIST	10
		T.D. @ 7553'								
8										

DATE SEPTEMBER 1995

WELL NAME: SAN JUAN 28-7 UNIT NO. 130M

**C E M E N T I N G      P R O G R A M**

**SURFACE CASING STRING**

150      sxs      Class B      Mixed at 15.6      ppg  
Additives 2% CaCl2 + .25 pps cello-seal

**INTERMEDIATE CASING STRING**

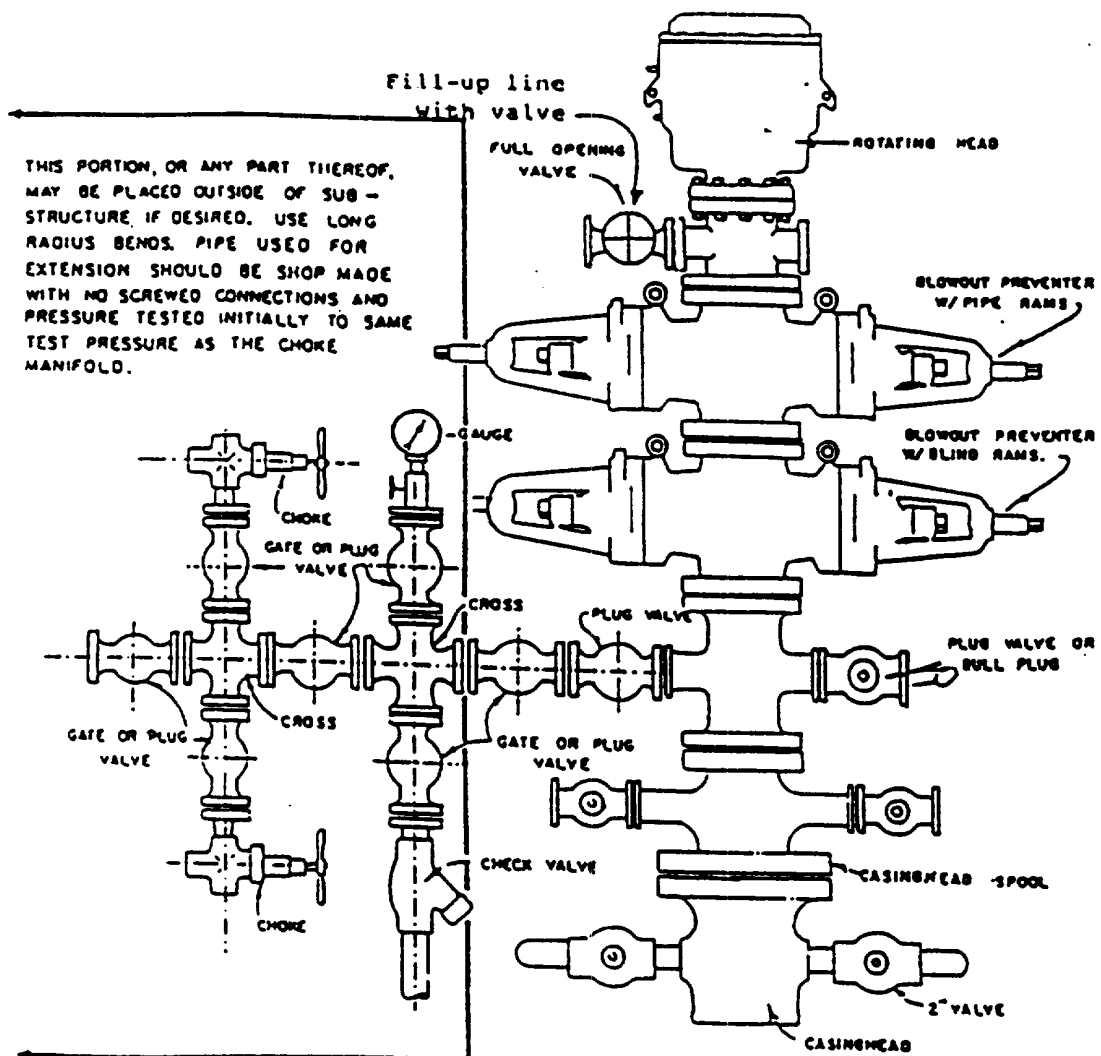
LEAD 425      sxs      Class B-65/35/8      Mixed at 12.2      ppg  
Additives 8% Gel+2% CaCl2+.25pps cello-seal+5 pps Gilsonite  
TAIL 150      sxs      Class B      Mixed at 15.6      ppg  
Additives 1% CaCl2+.25 pps cello-seal+5 pps Gilsonite  
0% Free Water --- 900 cc water loss

**PRODUCTION CASING STRING**

LEAD 365      sxs      Class B      Mixed at 13.4      ppg  
Additives 1% CSE + 1% T-Lite + 1% FL-62  
TAIL 70      sxs      Class H      Mixed at 16.2      ppg  
Additives 35% SF-3 + .2% T-Lite + 1.8% FL-62  
0% Free Water --- 140 cc water loss

**M U D      P R O G R A M**

INTERVAL	MUD WEIGHT (lbs/gal)	VISCOSITY (secs)	FLUID Loss (cc)	MUD TYPE
0' to 250'	8.4-9.4	Native	N/C	Spud Mud
250' to Intermediate Casing Point	8.4-9.4	30-45	N/C	Gel/Water
Intermediate Casing Point to T.D.	N/A	N/A	N/A	Air/Air-Mist



### BLOWOUT PREVENTER HOOKUP

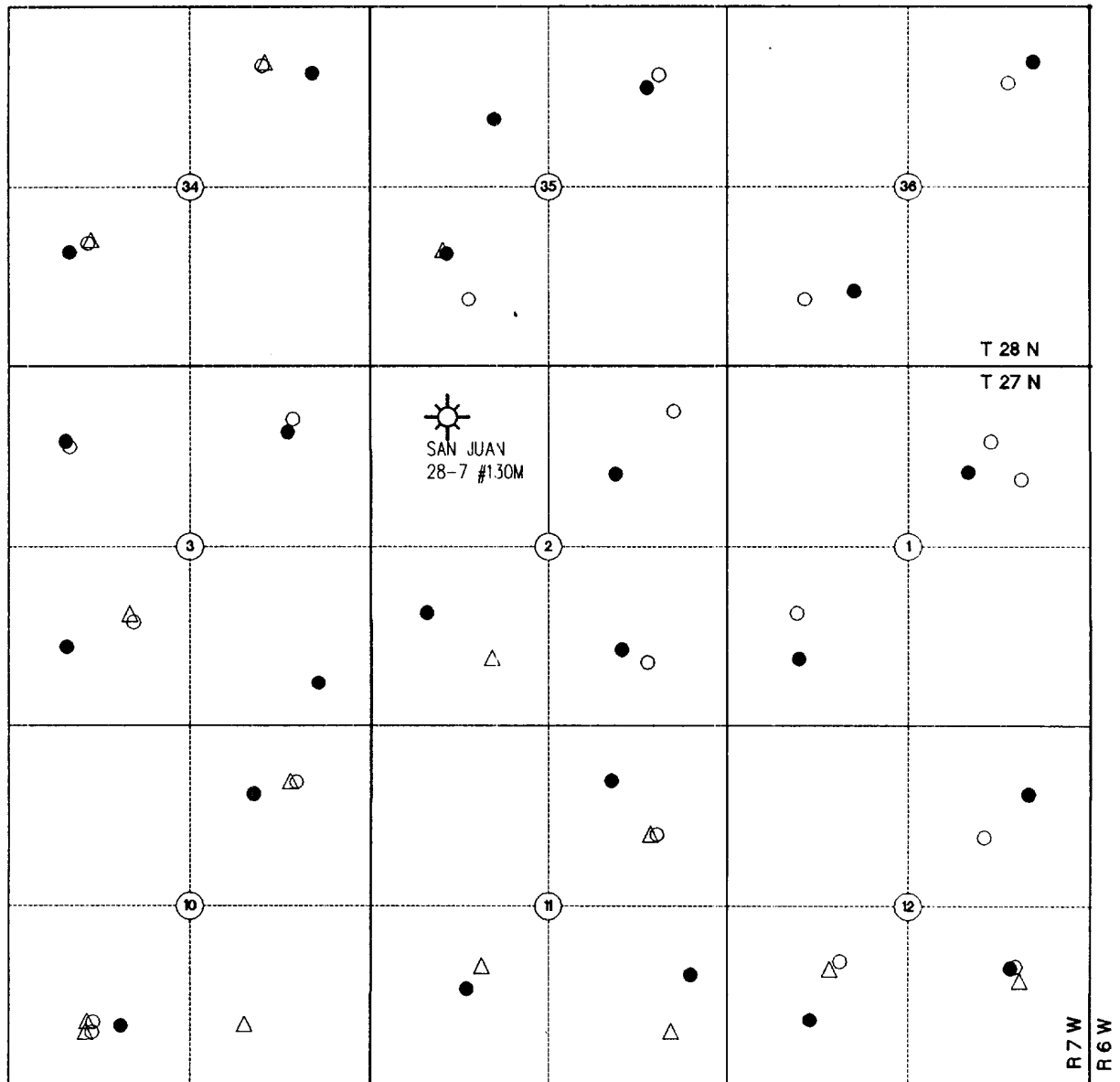
Drilling contractors used in the San Juan Basing supply 3000 psi equipment, but cannot provide annular preventors because of sub-structure limitations. Maximum anticipated surface pressures for this well will not exceed the working pressure of the proposed BOP system. Please see the attached BOP diagram details 2000 psi equipment according to Onshore Order No. 2 even though the equipment will test to 3000 psi. The 2000 psi system allows deletion of the annular preventor and fulfills your requirements (note diagram No. 1). In addition, the following equipment will comprise the 2000 psi system:

1. Two rams with one blind and one pipe ram.
2. Kill line (2 inch maximum).
3. One kill line valve.
4. One choke line valve.
5. Two chokes (reference diagram No. 1).
6. Upper kelly cock valve with handle.
7. Safety valve and subs to fit all drill strings in use.
8. Two-inch minimum choke line.
9. Pressure gauge on choke manifold.
10. Fill-up line above the upper most preventor.
11. Rotating head.

# CONOCO SAN JUAN 28-7 #130M

BLANCO MESA VERDE / BASIN DAKOTA FORMATION GAS WELL  
EXISTING ADJACENT GAS WELLS WITHIN A 1 MILE RADIUS

NW/4 SECTION 2, TOWNSHIP 27 NORTH, RANGE 7 WEST  
RIO ARriba COUNTY, NEW MEXICO



## LEGEND

- BLANCO MESA VERDE FORMATION
- △ BLANCO PICTURED CLIFFS
- BASIN DAKOTA FORMATION
- BASIN FRUITLAND COAL FORMATION
- ☼ SAN JUAN 28-7 #130M



SCALE : NTS

REVISION:

DRAWN BY: J. BISLAND

DATE DRAWN: 1/5/95

FILE NAME: A/63CALV

CLIENT

**conoco**

FARMINGTON, NEW MEXICO

PREPARED BY



TRICON ENGINEERING INC  
DENVER COLORADO  
FARMINGTON NEW MEXICO

