

RECEIVED
BLM

UNITED STATES
DEPARTMENT OF THE INTERIOR
BUREAU OF LAND MANAGEMENT

APPLICATION FOR PERMIT TO DRILL, DEEPEN, OR PLUG BACK

96 AUG 15 11 2 31

1a. Type of Work
DRILL

1b. Type of Well
GAS

2. Operator
BURLINGTON RESOURCES Oil & Gas Company
14538

3. Address & Phone No. of Operator
PO Box 4289, Farmington, NM 87499
(505) 326-9700

4. Location of Well
2380' FSL, 905' FEL
Latitude 36° 36.1, Longitude 107° 18.2

5. Lease Number
SF-079491
Unit Reporting Number

6. If Indian, All. or Tribe

7. Unit Agreement Name
San Juan 27-5 Unit

8. Farm or Lease Name
7454 San Juan 27-5 Unit

9. Well Number
100M

10. Field, Pool, Wildcat
72319 Blanco MV/Basin Dk 71599

11. Sec., Twn, Rge, Mer. (NMPM)
I Sec 1, T-27-N, R-5-W
API # 30-039-25591

12. County
Rio Arriba

13. State
NM

14. Distance in Miles from Nearest Town
9 miles to Gobernador

15. Distance from Proposed Location to Nearest Property or Lease Line
905'

16. Acres in Lease

17. Acres Assigned to Well
S/2 (Dk) E/2 (MV)

18. Distance from Proposed Location to Nearest Well, Drlg, Compl, or Applied for on this Lease

19. Proposed Depth
8569'

20. Rotary or Cable Tools
Rotary

21. Elevations (DF, FT, GR, Etc.)
7286' GR

22. Approx. Date Work will Start

23. Proposed Casing and Cementing Program
See Operations Plan attached

24. Authorized by: [Signature]
(Regulatory/Compliance Administrator)

Date: 8-12-96

070 FARMINGTON RECEIVED
SEP 18 1996
OIL CON. DIV.
DIST. 3

PERMIT NO. _____ APPROVAL DATE _____
APPROVED BY _____ TITLE _____ DATE _____

APPROVED
AS AMENDED

SEP 16 1996

DISTRICT MANAGER

Archaeological Report to be submitted by Arboles Contract Archaeology
Threatened and Endangered Species Report to be submitted
NOTE: This format is issued in lieu of U.S. BLM Form 3160-3

Held C-104 For NSL (S)

NMOCD

District I
 PO Box 1989, Hobbs, NM 88241-1989
 District II
 PO Drawer DD, Artesia, NM 88211-0719
 District III
 1000 Rio Brazos Rd., Aztec, NM 87410
 District IV
 PO Box 2088, Santa Fe, NM 87504-2088

State of New Mexico
 Energy, Minerals & Natural Resources Department

RECEIVED
 BLM

Form C-10
 Revised February 21, 199-

OIL CONSERVATION DIVISION
 PO Box 2088
 Santa Fe, NM 87504-2088

96 AUG 15 10 25 AM '96
 Submit to
 070 FARMINGTON, NM

Instructions on back
 Appropriate District Office:
 State Lease - 4 Copies
 Fee Lease - 3 Copies

AMENDED REPORT

WELL LOCATION AND ACREAGE DEDICATION PLAT

1 API Number 30-039-25591		2 Pool Code 72319/71599		3 Pool Name Blanco Mesaverde/Basin Dakota	
4 Property Code 7454		5 Property Name San Juan 27-5 Unit			6 Well Number 100M
7 OGRID No. 14538		8 Operator Name MERIDIAN OIL INC.			9 Elevation 7286'

10 Surface Location

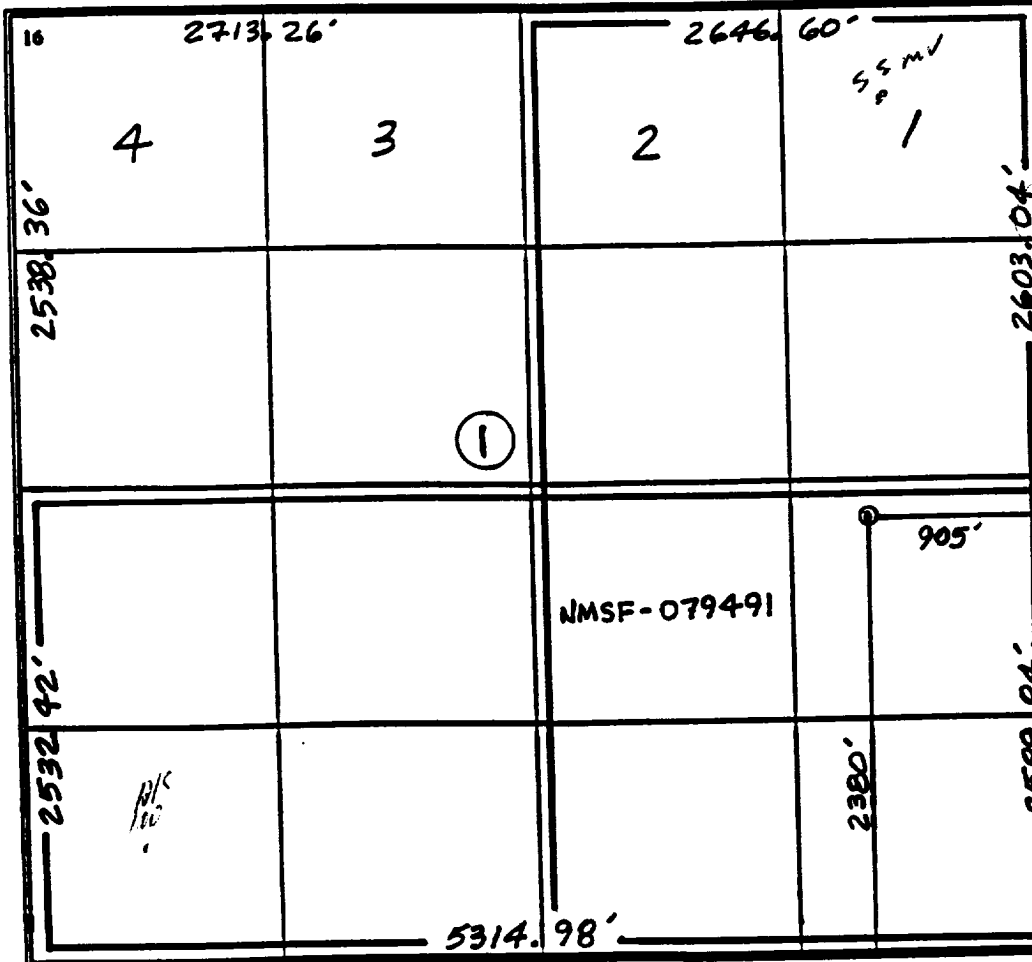
UL or lot no.	Section	Township	Range	Lot Ida	Feet from the	North/South line	Feet from the	East/West line	County
I	1	27 N	5 W		2380	South	905	East	R.A.

11 Bottom Hole Location If Different From Surface

UL or lot no.	Section	Township	Range	Lot Ida	Feet from the	North/South line	Feet from the	East/West line	County

12 Dedications Across MV-E/320, 08 DK-S/320	13 Joint or Infill	14 Consolidation Code	15 Order No.
---	--------------------	-----------------------	--------------

NO ALLOWABLE WILL BE ASSIGNED TO THIS COMPLETION UNTIL ALL INTERESTS HAVE BEEN CONSOLIDATED OR A NON-STANDARD UNIT HAS BEEN APPROVED BY THE DIVISION



17 OPERATOR CERTIFICATION

I hereby certify that the information contained herein is true and complete to the best of my knowledge and belief

Peggy Bradfield
 Signature
 Peggy Bradfield
 Printed Name
 Regulatory Administrator
 Title
 8-12-96
 Date

18 SURVEYOR CERTIFICATION

I hereby certify that the well location shown on this plat was plotted from field notes of actual surveys made by me or under my supervision, and that the same is true and correct to the best of my belief.

7-02-96
 Date of Survey
 Signature

 Certificate Number

OPERATIONS PLAN

Well Name: San Juan 27-5 Unit #100M
Location: 2380' FSL, 905' FEL, Sec 1, T-27-N, R-5-W
 Rio Arriba County, NM
 Latitude 36° 36.1, Longitude 107° 18.2
Formation: Blanco Mesa Verde/Basin Dakota
Elevation: 7286'GL

<u>Formation Tops:</u>	<u>Top</u>	<u>Bottom</u>	<u>Contents</u>
Surface	San Jose	3569'	
Ojo Alamo	3569'	3707'	aquifer
Kirtland	3707'	3990'	
Fruitland	3990'	4165'	gas
Pictured Cliffs	4165'	4292'	gas
Lewis	4292'	4739'	gas
Chacra	4297'	5822'	gas
Intermediate TD	5772'		
Upper Cliff House	5822'	5897'	gas
Massive Cliff House	5897'	5982'	gas
Menefee	5982'	6322'	gas
Massive Point Lookout	6322'	6453'	gas
Lower Point Lookout	6453'	6681'	gas
Mancos	6681'	7426'	gas
Gallup	7426'	8242'	gas
Greenhorn	8242'	8306'	gas
Graneros	8306'	8454'	gas
Dakota	8454'	8572'	gas
Encinal	8572'	8580'	
Burro Canyon	8580'		
TD (5 1/2"liner)	8569'		

Logging Program:Mud Program:

<u>Interval</u>	<u>Type</u>	<u>Weight</u>	<u>Vis.</u>	<u>Fluid Loss</u>
0- 200'	Spud	8.4-8.9	40-50	no control
200-5772'	LSND	8.4-9.0	30-60	no control
5772-8569'	Gas	n/a	n/a	n/a

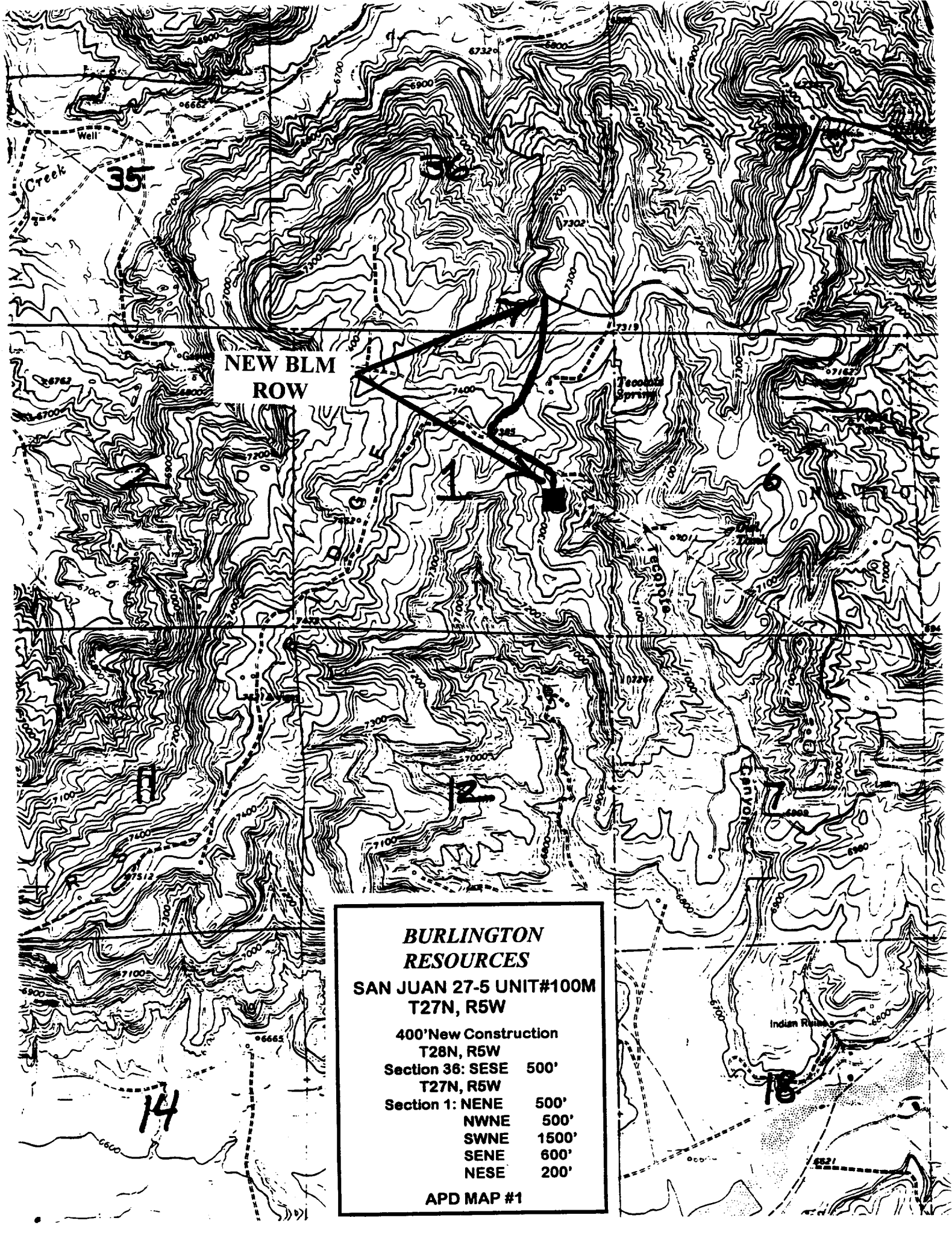
Pit levels will be visually monitored to detect gain or loss of fluid control.

Casing Program:

<u>Hole Size</u>	<u>Depth Interval</u>	<u>Csg. Size</u>	<u>Wt.</u>	<u>Grade</u>
12 1/4"	0' - 200'	9 5/8"	36.0#	K-55
8 3/4"	0' - 5772'	7"	20.0#	K-55
6 1/4"	5622' - 8569'	4 1/2"	11.6#	N-80

Tubing Program:

0' - 5672'	2 3/8", 4.70# EUE
0' - 8569'	1 1/2", 2.90# EUE



**NEW BLM
ROW**

**BURLINGTON
RESOURCES**

**SAN JUAN 27-5 UNIT#100M
T27N, R5W**

400' New Construction
T28N, R5W

Section 36: SESE	500'
T27N, R5W	
Section 1: NENE	500'
NWNE	500'
SWNE	1500'
SENE	600'
NESE	200'

APD MAP #1