

UNITED STATES
DEPARTMENT OF THE INTERIOR
BUREAU OF LAND MANAGEMENT

APPLICATION FOR PERMIT TO DRILL, DEEPEN, OR PLUG BACK

| | |
|--|---|
| 1a. Type of Work DRILL | 5. Lease Number SF-079393 |
| 1b. Type of Well GAS | Unit Reporting Number |
| 2. Operator BURLINGTON RESOURCES Oil & Gas Company | 6. If Indian, All. or Tribe |
| 3. Address & Phone No. of Operator PO Box 4289, Farmington, NM 87499 (505) 326-9700 | 7. Unit Agreement Name San Juan 27-5 Unit |
| 4. Location of Well 500' FSL, 2650' FEL Latitude 36° 35.8, Longitude 107° 21.8 | 8. Farm or Lease Name San Juan 27-5 Unit |
| 14. Distance in Miles from Nearest Town 6 miles to Gobernador | 9. Well Number 60B |
| 15. Distance from Proposed Location to Nearest Property or Lease Line 500' | 10. Field, Pool, Wildcat Blanco Mesa Verde |
| 16. Acres in Lease | 11. Sec., Twn, Rge, Mer. (NMPM) Sec 4, T-27-N, R-5-W API # 30-039-25871 |
| 18. Distance from Proposed Location to Nearest Well, Drig, Compl, or Applied for on this Lease 700' | 12. County Rio Arriba |
| 19. Proposed Depth 6093' | 13. State NM |
| 21. Elevations (DF, FT, GR, Etc.) 6671' GR | 17. Acres Assigned to Well E/2 319.69 |
| 23. Proposed Casing and Cementing Program See Operations Plan attached | 20. Rotary or Cable Tools Rotary |
| 24. Authorized by: <u>[Signature]</u> Regulatory/Compliance Administrator | 22. Approx. Date Work will Start 4/2/98 |

RECEIVED
MAY 27 1998

DRILLING OPERATIONS AUTHORIZED ARE
SUBJECT TO COMPLIANCE WITH ATTACHED
"GENERAL REQUIREMENTS"

PERMIT NO. 18/ Joe Hewitt APPROVAL DATE APR 29 1998
APPROVED BY _____ TITLE _____ DATE APR 29 1998

Archaeological Report submitted
Threatened and Endangered Species Report submitted

Ar-10936

NMOCD

1970

1971

1972

1973

District I
PO Box 1980, Hobbs, NM 88241-1980

State of New Mexico
Energy, Minerals & Natural Resources Department

Form C-102
Revised February 21, 1994
Instructions on back
Submit to Appropriate District Office
State Lease - 4 Copies
Fee Lease - 3 Copies

District II
PO Drawer 00, Artesia, NM 88211-0719

OIL CONSERVATION DIVISION
PO Box 2088
Santa Fe, NM 87504-2088

District III
1000 Rio Brazos Rd., Aztec, NM 87410

District IV
PO Box 2088, Santa Fe, NM 87504-2088

AMENDED REPORT

WELL LOCATION AND ACREAGE DEDICATION PLAT

| | | | | | |
|------------------------|--|--|--|--------------------------------|---------------------|
| *API Number 30-039- | | *Pool Code 72319 | | *Pool Name Blanco Mesaverde | |
| *Property Code 7454 | | *Property Name SAN JUAN 27-5 UNIT | | | *Well Number 608 |
| *OGRID No. 14538 | | *Operator Name BURLINGTON RESOURCES OIL & GAS COMPANY | | | *Elevation 6671' |

¹⁰ Surface Location

| UL or lot no. | Section | Township | Range | Lot Idn | Feet from the | North/South line | Feet from the | East/West line | County |
|---------------|---------|----------|-------|---------|---------------|------------------|---------------|----------------|------------|
| 0 | 4 | 27N | 5W | | 500 | South | 2650 | East | RIO ARRIBA |

¹¹ Bottom Hole Location If Different From Surface

| UL or lot no. | Section | Township | Range | Lot Idn | Feet from the | North/South line | Feet from the | East/West line | County |
|---------------|---------|----------|-------|---------|---------------|------------------|---------------|----------------|--------|
| | | | | | | | | | |

| | | | |
|---|-------------------------------|----------------------------------|-------------------------|
| ¹² Dedicated Acres E/319.69 | ¹³ Joint or Infill | ¹⁴ Consolidation Code | ¹⁵ Order No. |
|---|-------------------------------|----------------------------------|-------------------------|

NO ALLOWABLE WILL BE ASSIGNED TO THIS COMPLETION UNTIL ALL INTERESTS HAVE BEEN CONSOLIDATED OR A NON-STANDARD UNIT HAS BEEN APPROVED BY THE DIVISION

¹⁶

¹⁷ OPERATOR CERTIFICATION

I hereby certify that the information contained herein is true and complete to the best of my knowledge and belief

Peggy Bradfield
Signature

Peggy Bradfield
Printed Name

Regulatory Administrator
Title

1/2/98
Date

¹⁸ SURVEYOR CERTIFICATION

I hereby certify that the well location shown on this plat was plotted from field notes of actual surveys made by me or under my supervision and that the same is true and correct to the best of my belief.

OCTOBER 28, 1997
Date of Survey

Neale C. Edwards
Signature and Seal

NEALE C. EDWARDS
NEW MEXICO
6857
Professional Surveyor

6857
Certificate Number

81.23

OPERATIONS PLAN

Well Name: San Juan 27-5 Unit #60B
Location: 500' FSL, 2650' FEL Section 4, T-27-N, R-5-W
Rio Arriba County, New Mexico
Latitude 36° 35.8, Longitude 107° 21.8
Formation: Blanco Mesa Verde
Elevation: 6671' GL

| <u>Formation Tops:</u> | <u>Top</u> | <u>Bottom</u> | <u>Contents</u> |
|------------------------|--------------|---------------|-----------------|
| Surface | San Jose | 2823' | aquifer |
| Ojo Alamo | 2823' | 3093' | aquifer |
| Fruitland | 3093' | 3503' | |
| Pictured Cliffs | 3503' | 3603' | gas |
| Lewis | 3603' | 3983' | gas |
| Intermediate TD | 3703' | | |
| Huerfanito Bentonite | 3983' | 4443' | |
| Chacra | 4443' | 5140' | |
| Massive Cliff House | 5163' | 5338' | gas |
| Menefee | 5338' | 5693' | gas |
| Massive Point Lookout | 5693' | | gas |
| Total Depth | 6093' | | |

Logging Program:

Cased hole logging - Gamma Ray Neutron
Coring/DST - none

Mud Program:

| <u>Interval</u> | <u>Type</u> | <u>Weight</u> | <u>Vis.</u> | <u>Fluid Loss</u> |
|-----------------|-------------|---------------|-------------|-------------------|
| 0- 200' | Spud | 8.4-9.0 | 40-50 | no control |
| 200-3703' | LSND | 8.4-9.0 | 30-60 | no control |
| 3703-6093' | Gas/Mist | n/a | n/a | n/a |

Pit levels will be visually monitored to detect gain or loss of fluid control.

Casing Program (as listed, the equivalent, or better):

| <u>Hole Size</u> | <u>Depth Interval</u> | <u>Csq. Size</u> | <u>Wt.</u> | <u>Grade</u> |
|------------------|-----------------------|------------------|------------|--------------|
| 12 1/4" | 0' - 200' | 9 5/8" | 32.3# | H-40 |
| 8 3/4" | 0' - 3703' | 7" | 20.0# | J-55 |
| 6 1/4" | 3603' - 6093' | 4 1/2" | 10.5# | J-55 |

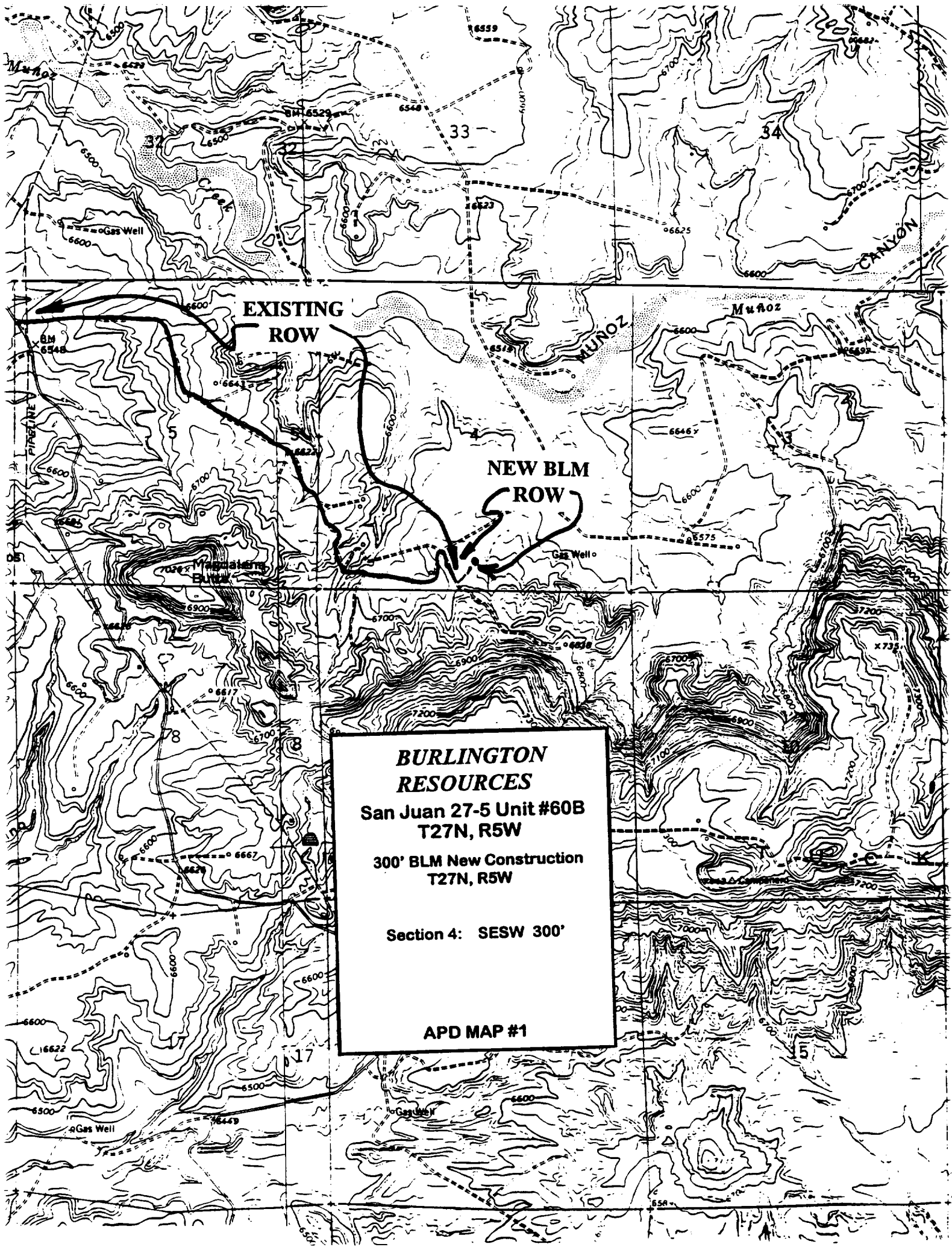
Tubing Program:

0' - 6093' 2 3/8" 4.7# J-55

BOP Specifications, Wellhead and Tests:

Surface to Intermediate TD -

11" 2000 psi minimum double gate BOP stack (Reference Figure #1).
After nipple-up prior to drilling out surface casing, rams and casing will be tested to 600 psi for 30 minutes.



**BURLINGTON
RESOURCES**
San Juan 27-5 Unit #60B
T27N, R5W
300' BLM New Construction
T27N, R5W
Section 4: SESW 300'
APD MAP #1