



NEW MEXICO ENERGY, MINERALS  
& NATURAL RESOURCES DEPARTMENT

OIL CONSERVATION DIVISION  
2040 South Pacheco Street  
Santa Fe, New Mexico 87505  
(505) 827-7131

July 22, 1998

RECEIVED  
JUL 29 1998  
OIL CON. DIV.  
DIST. 3

Burlington Resources Oil & Gas Company  
P. O. Box 4289  
Farmington, New Mexico 87499-4289  
Attention: Peggy Bradfield

Administrative Order NSL-4098

Dear Ms. Bradfield:

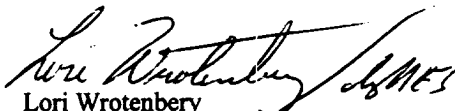
Reference is made to your application submitted to the New Mexico Oil Conservation Division ("Division") on July 14, 1998 for an exception to the well location requirements provided within the "*Special Rules and Regulations for the Blanco-Mesaverde Pool/Special Rules and Regulations for the Basin-Dakota Pool*," as promulgated by Division Order No. R-10987, for Burlington Resources Oil & Gas Company's ("Burlington") proposed San Juan "27-4" Unit Well No. 70-M to be drilled at an unorthodox infill gas well location in both the Blanco-Mesaverde and Basin-Dakota Pools 1925 feet from the North line and 1040 feet from the West line (Unit E) of Section 4, Township 27 North, Range 4 West, NMPM, Rio Arriba County, New Mexico.

Gas production attributed to the well from both pools is to be included in the existing standard 319.20-acre stand-up gas spacing and proration unit comprising Lots 1 and 2, the S/2 NW/4, and the SW/4 (W/2 equivalent) of Section 4. Blanco-Mesaverde gas production is currently dedicated to Burlington's San Juan "27-4" Unit Well No. 18 (API No. 30-039-07171), located at a standard gas well location 1096 feet from the South line and 860 feet from the West line (Unit M) of Section 4. Basin-Dakota gas production is currently dedicated to Burlington's San Juan "27-4" Unit Well No. 70 (API No. 30-039-20719), located at a standard gas well location 1550 feet from the South line and 990 feet from the West line (Unit L) of Section 4.

The application has been duly filed under the provisions of Division Rules 104.F and 605.B of the Rules and Regulations of the New Mexico Oil Conservation Division ("Division").

By the authority granted me under the provisions of Division Rule 104.F(2), the above-described unorthodox Basin-Dakota/Blanco-Mesaverde infill gas well location for the San Juan "27-4" Unit Well No. 70-M is hereby approved. All of the aforementioned wells and both spacing units will be subject to all existing rules, regulations, policies, and procedures applicable to prorated gas pools in Northwest, New Mexico.

Sincerely,

  
Lori Wrotenberg  
Director

LW/MES/kv

cc: New Mexico Oil Conservation Division - Aztec /  
U. S. Bureau of Land Management - Farmington

# BURLINGTON RESOURCES

SAN JUAN DIVISION

Sent Federal Express

Ms. Lori Wrotenbery, Director  
New Mexico Oil Conservation Division  
2040 South Pacheco  
Santa Fe, New Mexico 87505

RECEIVED  
JUL 14 1993  
OIL CON. DIV.  
DUL 3

Re: San Juan 27-4 Unit #70M  
1925'FNL, 1040FWL, Section 4, T-27-N, R-4-W, Rio Arriba County, NM  
30-039-not assigned

Dear Ms. Wrotenbery:

Burlington Resources is applying for administrative approval of an unorthodox gas well location for both the Mesa Verde and Dakota pools. This application for the referenced location is for topographic reasons, archaeology, and at the request of the Carson National Forest Service.

Production from the Blanco Mesa Verde pool is to be included in a standard 319.2 acre gas spacing and proration unit comprising of the west half (W/2) of Section 4 which is currently dedicated to Burlington's San Juan 27-4 Unit #18 (API 30-039-07171), located at 1096'FSL, 860'FWL of Section 4. Production from the Basin Dakota pool is to be included in a standard 319.2 acre gas spacing and proration unit comprising of the west half (W/2) of Section 4 which is currently dedicated to Burlington's San Juan 27-4 Unit #70 (API 30-039-20719), located at 1550'FSL, 990'FWL of Section 4.

The following attachments are for your review:

1. Application for Permit to Drill.
2. Completed C-102 at referenced location.
3. Offset operators/owners plat – Burlington is the operator of the unit.
4. 7.5 minute topographic map, and enlargement of the map to define topographic features.

We appreciate your earliest consideration of this application.

Sincerely,

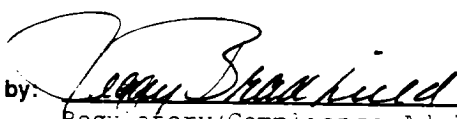


Peggy Bradfield  
Regulatory/Compliance Administrator

xc: NMOCD - Aztec District Office  
Bureau of Land Management – Farmington District Office

UNITED STATES  
DEPARTMENT OF THE INTERIOR  
BUREAU OF LAND MANAGEMENT

APPLICATION FOR PERMIT TO DRILL, DEEPEN, OR PLUG BACK

1a. Type of Work DRILL	5. Lease Number SF-080668 Unit Reporting Number 8910010540-Dk 891001054A-MV
1b. Type of Well GAS	6. If Indian, All. or Tribe
2. Operator <b>BURLINGTON RESOURCES</b> Oil & Gas Company	7. Unit Agreement Name San Juan 27-4 Unit
3. Address & Phone No. of Operator PO Box 4289, Farmington, NM 87401 (505) 326-9700	8. Farm or Lease Name San Juan 27-4 Unit 9. Well Number 70M
4. Location of Well 1925' FNL, 1040' FNL Latitude 36° 36' 40", Longitude 107° 17' 24"	10. Field, Pool, Wildcat Blanco MV/Basin Dk 11. Sec., Twn, Rge, Mer. (NMPM) Sec 4, T-27-N, R-4-W API # 30-039-
14. Distance in Miles from Nearest Town 60 miles to Bloomfield	12. County RA 13. State NM
15. Distance from Proposed Location to Nearest Property or Lease Line 1040'	
16. Acres in Lease	17. Acres Assigned to Well 319.2
18. Distance from Proposed Location to Nearest Well, Drlg, Compl, or Applied for on this Lease 800'	
19. Proposed Depth 3632'	20. Rotary or Cable Tools Rotary
21. Elevations (DF, FT, GR, Etc.) 7250' GR	22. Approx. Date Work will Start
23. Proposed Casing and Cementing Program See Operations Plan attached	
24. Authorized by:  Regulatory/Compliance Administrator	5-30-98 Date

PERMIT NO. \_\_\_\_\_ APPROVAL DATE \_\_\_\_\_  
APPROVED BY \_\_\_\_\_ TITLE \_\_\_\_\_ DATE \_\_\_\_\_

Archaeological Report to be submitted

Threatened and Endangered Species Report to be submitted

NOTE: This format is issued in lieu of U.S. BLM Form 3160-3

Title 18 U.S.C. Section 1001, makes it a crime for any person knowingly and willfully to make to any department or agency of the United States any false, fictitious or fraudulent statements or presentations as to any matter within its jurisdiction.

District I  
PO Box 1980, Hobbs NM 88241-1980  
District II  
PO Drawer KJC, Aztec, NM 87211-0719  
District III  
1000 Rio Brazos Rd., Aztec, NM 87410  
District IV  
PO Box 2088, Santa Fe, NM 87504-2088

State of New Mexico  
Energy, Minerals & Natural Resources Department

OIL CONSERVATION DIVISION  
PO Box 2088  
Santa Fe, NM 87504-2088

Form  
Revised February 2  
Instructions  
Submit to Appropriate District  
State Lease - 4  
Fee Lease - 3

☐ AMENDED RETURN

WELL LOCATION AND ACREAGE DEDICATION PLAT

1 API Number 30-039-		2 Pool Code 72319/71599		3 Pool Name Blanco Mesaverde/ Basin Dakota	
4 Property Code 7452		5 Property Name SAN JUAN 27-4 UNIT			6 Well Number # 701
7 OGBID No. 14538		8 Operator Name BURLINGTON RESOURCES OIL & GAS COMPANY			9 Elevation 7250

10 Surface Location

UL or Lot No. E	Section 4	Township 27 N	Range 4 W	Lot Idn	Feet from the 1925	North/South line NORTH	Feet from the 1040	East/West line WEST	County RIO A.
--------------------	--------------	------------------	--------------	---------	-----------------------	---------------------------	-----------------------	------------------------	------------------

11 Bottom Hole Location If Different From Surface

1 UL or lot no.	2 Section	3 Township	4 Range	5 Lot Idn	6 Feet from the	7 North/South line	8 Feet from the	9 East/West line	10 County
-----------------	-----------	------------	---------	-----------	-----------------	--------------------	-----------------	------------------	-----------

11 Dedicated Acres MV-W/319.20 DK-W/319.20	12 Joint or Infill	13 Commencement Code	14 Order No.
--	--------------------	----------------------	--------------

NO ALLOWABLE WILL BE ASSIGNED TO THIS COMPLETION UNTIL ALL INTEREST HAVE BEEN CONSOLIDATED OR A NON-STANDARD UNIT HAS BEEN APPROVED BY THE DIVISION

<p>15</p> <p>5280'(R)</p> <p>Lot 4      Lot 3      Lot 2      Lot 1</p> <p>1925'</p> <p>1040'</p> <p>5267'(R)</p> <p>4</p> <p>NMSF - 080668</p> <p>5274'(R)</p>				<p>16 OPERATOR CERTIFICATE</p> <p>I hereby certify that the information contained here is true and complete to the best of my knowledge.</p> <p><i>Peggy Bradfield</i> Signature Peggy Bradfield Printed Name Regulatory Administrator Title Date</p>	
<p>RECEIVED JUL 14 1998 OIL CONSERVATION DIVISION</p>				<p>17 SURVEYOR CERTIFICATE</p> <p>I hereby certify that the well location shown or was plotted from field notes of actual surveys or under my supervision, and that the same is correct to the best of my belief.</p> <p>February 26, 1998 Date of Survey Signature and Seal of Professional Surveyor GARY L. VANDERKAM REGISTERED PROFESSIONAL LAND SURVEYOR 7016 Certificate Number</p>	

## OPERATIONS PLAN

**Well Name:** San Juan 27-4 Unit #70M  
**Location:** 1925' FNL, 1040' FWL Sec 4, T-27-N, R-4-W  
Rio Arriba County, NM  
Latitude 36° 36' 40", Longitude 107° 17' 24"  
**Formation:** Blanco Mesa Verde/Basin Dakota  
**Elevation:** 7250' GL

<u>Formation Tops:</u>	<u>Top</u>	<u>Bottom</u>	<u>Contents</u>
Surface	San Jose	3561'	
Ojo Alamo	3561'	3734'	aquifer
Kirtland	3734'	3802'	
Fruitland	3802'	4155'	gas
Pictured Cliffs	4155'	4262'	gas
Lewis	4262'	4709'	gas
Intermediate TD	4362'		
Huerfanito Bentonite	4709'	5136'	gas
Chacra	5136'	5949'	
Massive Cliff House	5949'	6020'	gas
Menefee	6020'	6319'	gas
Massive Point Lookout	6319'	6885'	gas
Mancos Shale	6885'	7511'	
Gallup	7511'	8292'	gas
Greenhorn	8292'	8357'	gas
Dakota	8357'		gas
TD (4 1/2" liner)	8632'		

### Logging Program:

Cased hole - CBL - TD to 200' above TOC, GR/CNL across MV/Dk

### Mud Program:

<u>Interval</u>	<u>Type</u>	<u>Weight</u>	<u>Vis.</u>	<u>Fluid Loss</u>
0- 200'	Spud	8.4-9.0	40-50	no control
200-4362'	LSND	8.4-9.0	30-60	no control
4362-8632'	Gas	n/a	n/a	n/a

Pit levels will be visually monitored to detect gain or loss of fluid control.

### Casing Program (as listed, the equivalent, or better):

<u>Hole Size</u>	<u>Depth Interval</u>	<u>Csg. Size</u>	<u>Wt.</u>	<u>Grade</u>
12 1/4"	0' - 200'	9 5/8"	32.3=	WC-50
8 3/4"	0' - 4362'	7"	20.0=	J-55
6 1/4"	4262' - 8632'	4 1/2"	10.5=	J-55

### Tubing Program:

0' - 8632'      2 3/8"      4.70= EUE

### BOP Specifications, Wellhead and Tests:

#### Surface to Intermediate TD -

11" 2000 psi minimum double gate BOP stack (Reference Figure #1).  
After nipple-up prior to drilling out surface casing, rams and casing will be tested to 600 psi for 30 minutes.

#### Intermediate TD to Total Depth -

11" 2000 psi minimum double gate BOP stack (Reference Figure #1).  
After nipple-up prior to drilling out intermediate casing, rams and casing will be tested to 1500 psi for 30 minutes.

**Surface to Total Depth -**

2" nominal, 2000 psi minimum choke manifold (Reference Figure #3).

**Completion Operations -**

7 1/16" 2000 psi double gate BOP stack (Reference Figure #2).  
After nipple-up prior to completion, pipe rams, casing and liner top will be tested to 2000 psi for 15 minutes.

**Wellhead -**

9 5/8" x 7" x 2 3/8" x 3000 psi tree assembly.

**General -**

- Pipe rams will be actuated once each day and blind rams will be actuated once each trip to test proper functioning.
- An upper kelly cock valve with handle available and drill string valves to fit each drill string will be available on the rig floors at all times.
- BOP pit level drill will be conducted weekly for each drilling crew.
- All BOP tests and drills will be recorded in daily drilling reports.
- Blind and pipe rams will be equipped with extension hand wheels.

**Cementing:**

9 5/8" surface casing - cement with 163 sx Class "B" cement with 1/4# flocele/sx and 2% calcium chloride (188 cu.ft. of slurry, 200% excess to circulate to surface). WOC 8 hrs. Test casing to 600 psi for 30 minutes.

Saw tooth guide shoe on bottom. Bowspring centralizers will be run in accordance with Onshore Order #2.

**7" intermediate casing -**

Lead w/360 sx Class "B" w/3% metasilicate, 10# gilsonite/sx and 1/2# flocele/sx. Tail w/90 sx 50/50 Class "B" Poz w/2% calcium chloride, 2% gel, 1/2# flocele/sx, 10# gilsonite/sx (1147 cu.ft. of slurry, 75% excess to circulate to surface.) WOC minimum of 8 hours before drilling out intermediate casing. If cement does not circulate to surface, a CBL will be run during completion operations to determine TOC. Test casing to 1500 psi for 30 minutes.

Cement nose guide shoe on bottom with float collar spaced on top of shoe joint. Bowspring centralizers spaced every other joint off bottom, to the base of the Ojo Alamo at 3734'. Two turbolating centralizers at the base of the Ojo Alamo at 3734'. Bowspring centralizers spaced every fourth joint from the base of the Ojo Alamo to the base of the surface casing.

## 4 1/2" Production Liner -

Cement to cover minimum of 100' of 4 1/2" x 7" overlap. Cement with 472 sx 50/50 Class "B" Poz with 2% gel, 1/4# floccula/sx, 5# gilsonite/sx, and 0.4% fluid loss additive (628 cu.ft., 40% excess to cement 4 1/2" x 7" overlap). WOC a minimum of 18 hrs prior to completing.

Cement float shoe on bottom with float collar spaced on top of shoe joint.

Note: To facilitate higher hydraulic stimulation completion work, no liner hanger will be used. Instead, a long string of 4 1/2" casing will be run and cemented with a minimum of 100' of cement overlap between the 4 1/2" x 7" casing strings. After completion of the well, a 4 1/2" CIBP will be set above the last fracturing job to cut and pull the 4 1/2" casing above the 7" casing shoe. The 4 1/2" bridge plug will then be milled and tubing will be run for completion.

Special Drilling Operations (Gas/Mist Drilling):

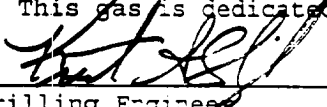
The following equipment will be operational while gas/mist drilling:

- An anchored blooie line will be utilized to discharge all cuttings and circulating medium to the blow pit a minimum of 100' from the wellhead.
- The blooie line will be equipped with an automatic igniter or pilot light.
- Compressors will be located a minimum of 100' from the wellhead in the opposite direction from the blooie line.
- Engines will have spark arresters or water cooled exhaust.
- Deduster equipment will be utilized.
- The rotating head will be properly lubricated and maintained.
- A float valve will be utilized above the bit.
- Mud circulating equipment, water, and mud materials will be sufficient to maintain control of the well.

Additional Information:

- The Dakota and Mesa Verde formations will be completed and commingled.
- No abnormal temperatures or hazards are anticipated.
- Anticipated pore pressures are as follows:

Fruitland Coal	800 psi
Pictured Cliffs	800 psi
Mesa Verde	700 psi
Dakota	2500 psi
- Sufficient LCM will be added to the mud system to maintain well control, if lost circulation is encountered.
- The west half is dedicated to the Dakota and the Mesa Verde in this well.
- This gas is dedicated.

  
Drilling Engineer

5/5/78  
Date

# **BURLINGTON RESOURCES**

San Juan 27-4 Unit #70M  
Multi-Point Surface Use Plan

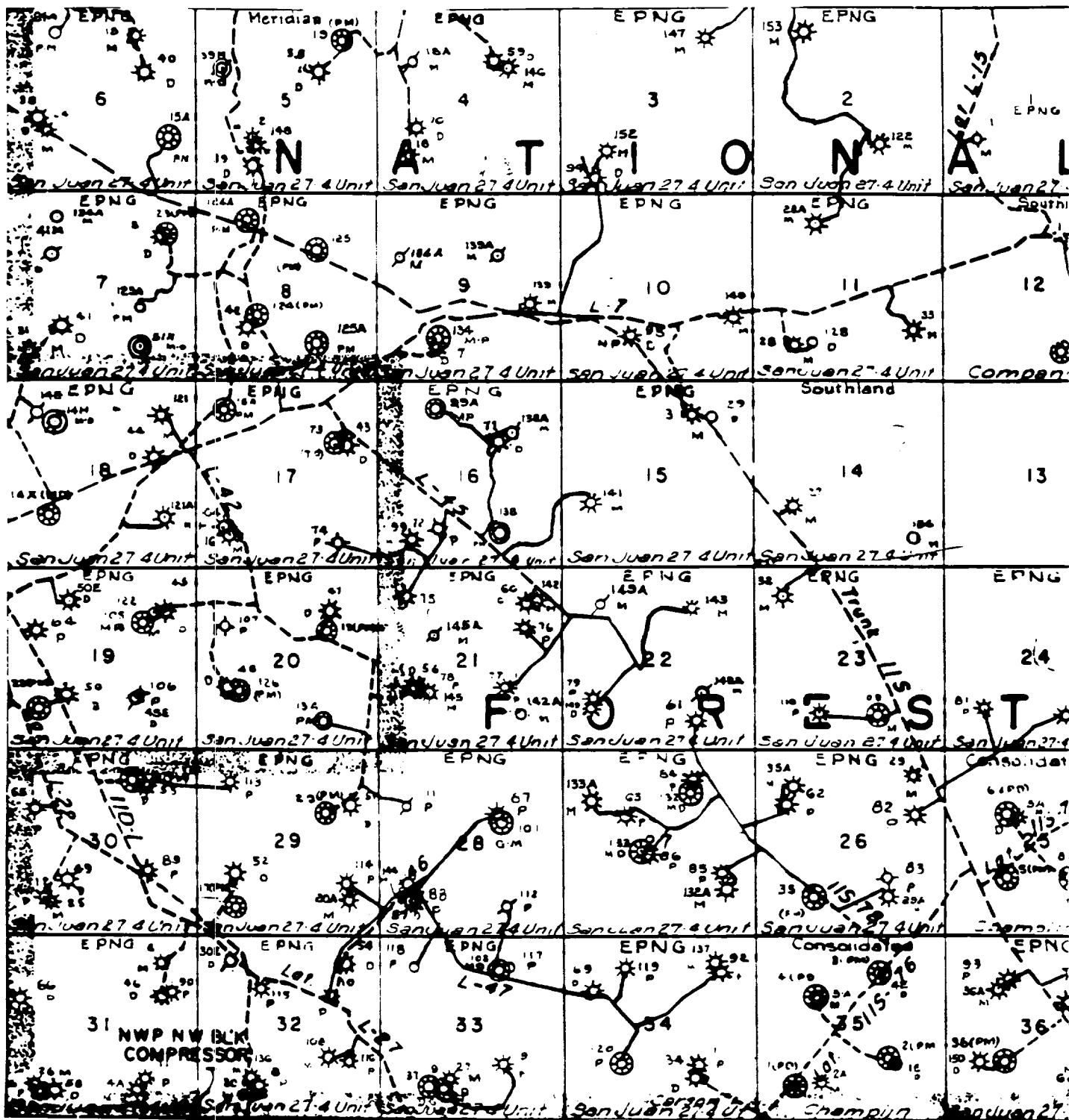
1. **Existing Roads** - Refer to Map No. 1. Existing roads used to access the proposed location will be properly maintained for the duration of the project. Bureau of Land Management right-of-way has been applied for as shown on Map No. 1.
2. **Planned Access Road** - Refer to Map No. 1. None required.
3. **Location of Existing Wells** - Refer to Map No. 1A.
4. **Location of Existing and/or Proposed Facilities if Well is Productive** -
  - a. **On the Well Pad** - Refer to Plat No. 1, anticipated production facilities plat.
  - b. **Off the Well Pad** - Anticipated pipeline facilities as shown on the attached plat from Williams Field Service.
5. **Location and Type of Water Supply** - Water will be hauled by truck for the proposed project and will be obtained from San Juan 27-5 Water Well #1 located NE/4 Section 3, T-27-N, R-5-W, New Mexico.
6. **Source of Construction Materials** - If construction materials are required for the proposed project, such materials will be obtained from a commercial quarry.
7. **Methods of Handling Waste Materials** - All garbage and trash materials will be removed from the site for proper disposal. A portable toilet will be provided for human waste and serviced in a proper manner. If liquids are left in the reserve pit after completion of the project, the pit will be fenced until the liquids have had adequate time to dry. The location clean-up will not take place until such time as the reserve pit can be properly covered over to prevent run-off from carrying waste materials into the watershed. Reserve pits will be lined as needed with either 12 mil bio-degradable plastic liner or a bentonite liner. All earthen pits will be so constructed as to prevent leakage from occurring; no earthen pit will be located on natural drainage. Generation of hazardous waste is not anticipated. Federal regulations will be adhered to regarding handling and disposal of such waste if so generated.
8. **Ancillary Facilities** - None anticipated.
9. **Wellsite Layout** - Refer to the location diagram and to the wellsite cut and fill diagram (Figure No. 4). The blow pit will be constructed with a 2'/160' grade to allow positive drainage to the reserve pit and prevent standing liquids in the blow pit.



10. Plans for Restoration of the Surface - After completion of the proposed project, the location will be cleaned and leveled. The location will be left in such a condition that will enable reseeding operations to be carried out. Seed mixture as designated by the responsible government agency will be used. The reseeding operations will be performed during the time period set forth by the responsible government agency. The permanent location facilities will be painted as designated by the responsible government agency.
11. Surface Ownership – Carson National Forest
12. Other Information - Environmental stipulations as outlined by the responsible government agency will be adhered to. Refer to the archaeological report for a description of the topography, flora, fauna, soil characteristics, dwellings, historical and cultural sites.
13. Operator's Representative and Certification - Burlington Resources Oil & Gas Company Regional Drilling Manager, Post Office Box 4289, Farmington, NM 87499, telephone (505) 326-9700. I hereby certify that I, or persons under my direct supervision, have inspected the proposed drill site and access route; that I am familiar with the conditions which presently exist; that the statements made in this plan, are to the best of my knowledge, true and correct; and that the work associated with the operations proposed herein will be performed by Burlington Resources Oil and Gas Company and its contractors and subcontractors in conformity with this plan and the terms and conditions under which it is approved.

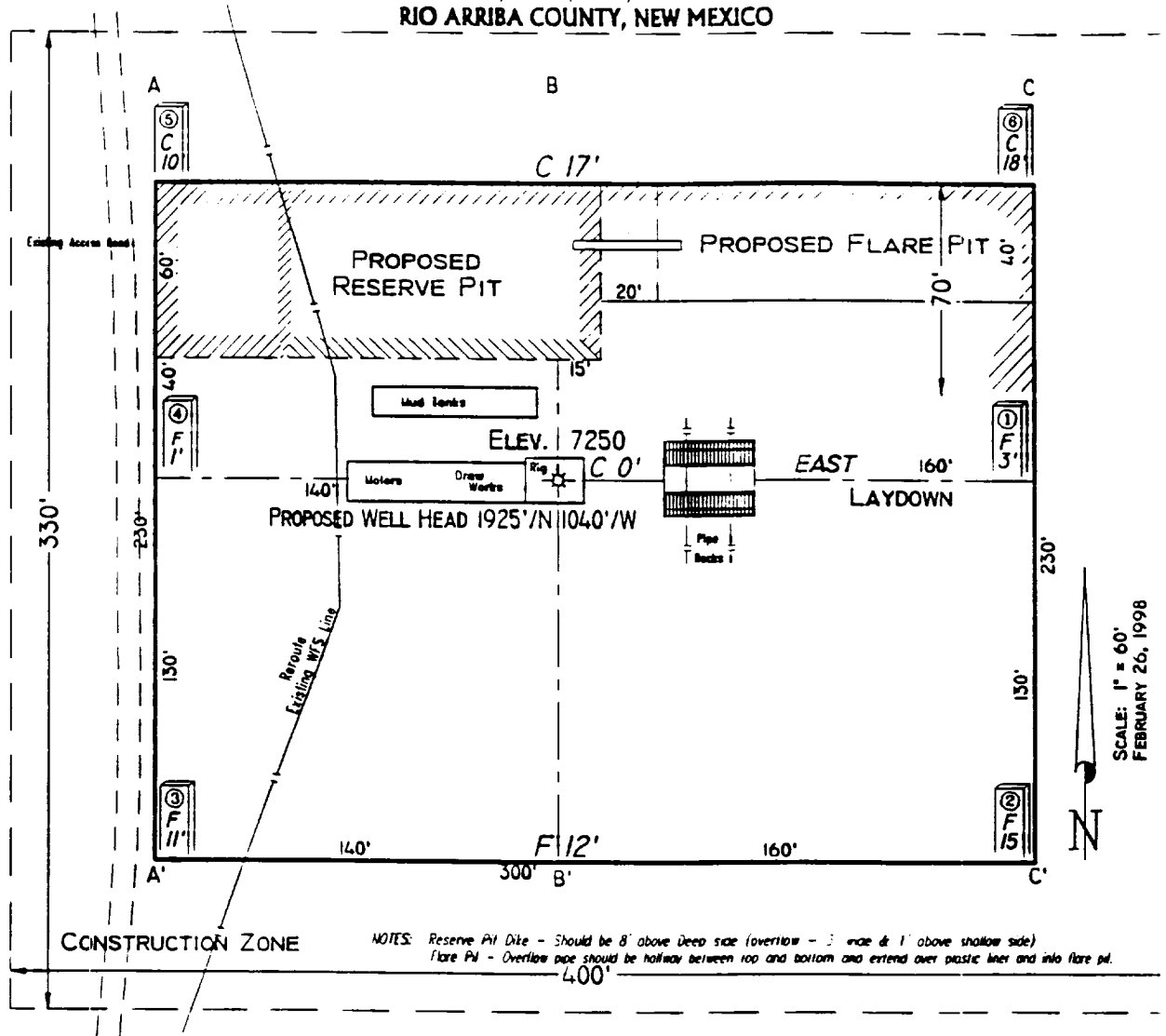
  
Regulatory/Compliance Administrator

5-30-98  
Date

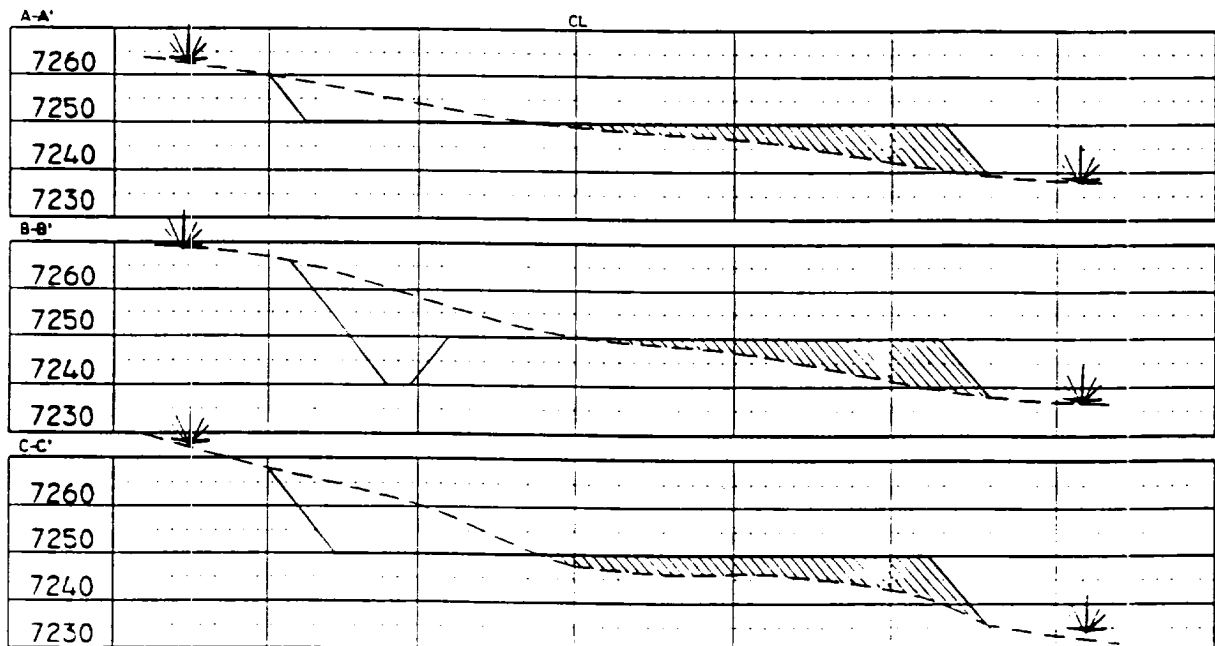


MERIDIAN OIL INC.  
 Pipeline Map  
 T-27-N, R-04-W  
 Rio Arriba County, New Mexico  
 San Juan 27-4 Unit = 70M  
 Map 1A

**PAD LAYOUT PLAN & PROFILE**  
**BURLINGTON RESOURCES OIL & GAS COMPANY**  
**SAN JUAN 27-4 UNIT 70M**  
 1925' F/NL 1040' F/WL  
 SEC. 4, T27N, R4W, N.M.P.M.  
 RIO ARriba COUNTY, NEW MEXICO



SCALE: 1" = 60'  
 FEBRUARY 26, 1998



SCALE: 1" = 60'-HOR  
 1" = 40'-VER

NOTE: Contour  
 call One-Call  
 of any marked  
 buried pipelines  
 well pad and/or  
 at least two (2)  
 prior to constr.

VANN  
 304  
 Farmir

***BURLINGTON RESOURCES OIL AND GAS COMPANY***

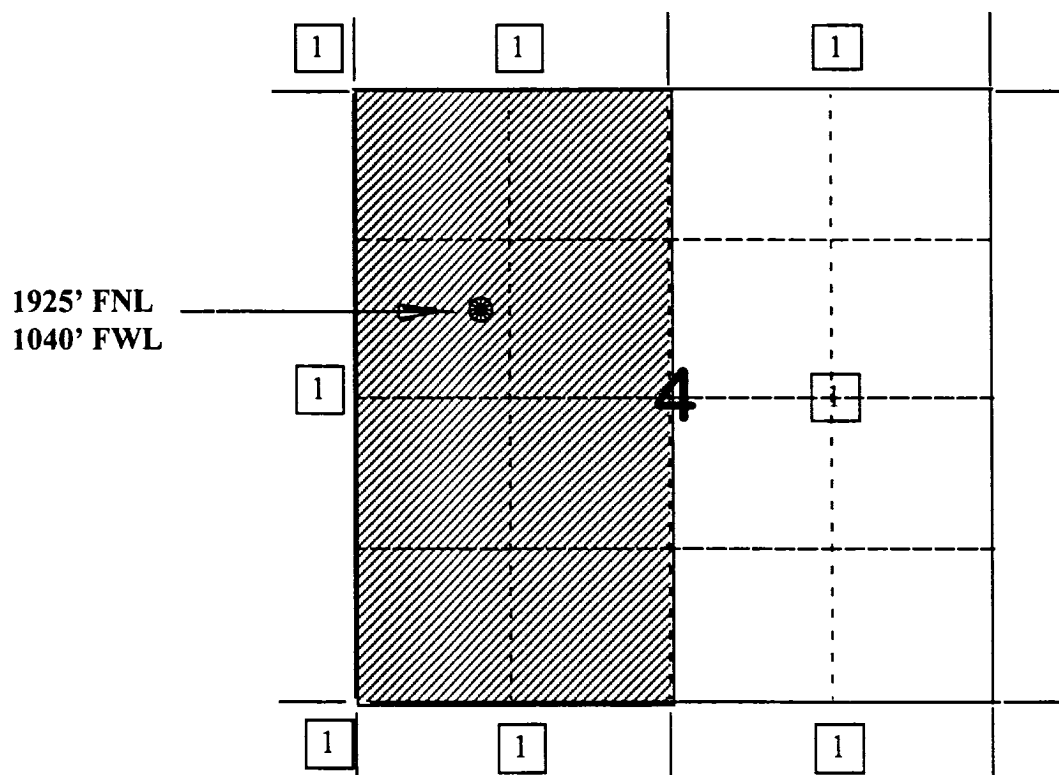
**San Juan 27-4 Unit #70M**

**OFFSET OPERATOR/OWNER PLAT**

**Nonstandard Location**

**Mesaverde / Dakota Formations Well**

**Township 27 North, Range 4 West**



1) Burlington Resources

