

UNITED STATES
DEPARTMENT OF THE INTERIOR
BUREAU OF LAND MANAGEMENT

APPLICATION FOR PERMIT TO DRILL, DEEPEN, OR PLUG BACK

1a. Type of Work
DRILL

5. Lease Number
SF-080670

Unit Reporting Number
891001054A-MV
8910010540-Dk

6. If Indian, All. or Tribe

1b. Type of Well
GAS

RECEIVED
AUG 20 1998

2. Operator

**BURLINGTON
RESOURCES**

Oil & Gas Company

OIL CON. DIV.
DIST. 3

Unit Agreement Name

San Juan 27-4 Unit

3. Address & Phone No. of Operator

PO Box 4289, Farmington, NM 87499

(505) 326-9700

8. Farm or Lease Name

San Juan 27-4 Unit

9. Well Number
49M

4. Location of Well

1880' FNL, 790' FWL

Latitude 36° 32' 47", Longitude 107° 17' 52"

10. Field, Pool, Wildcat

Blanco MV/Basin Dk

11. Sec., Twn, Rge, Mer. (NMPM)

E Sec 30, T-27-N, R-4-W

API # 30-039-

14. Distance in Miles from Nearest Town

60 miles to Bloomfield

12. County
RA

13. State
NM

15. Distance from Proposed Location to Nearest Property or Lease Line
790'

16. Acres in Lease

17. Acres Assigned to Well
321.56 W/2

18. Distance from Proposed Location to Nearest Well, Drlg, Compl, or Applied for on this Lease

19. Proposed Development
7983 This action is subject to technical and procedural review pursuant to 43 CFR 3165.3 and appeal pursuant to 43 CFR 3165.4.

20. Rotary or Cable Tools
Rotary

21. Elevations (DF, FT, GR, Etc.)
6698' GR

22. Approx. Date Work will Start

DRILLING OPERATIONS AUTHORIZED ARE
~~SUBJECT TO COMPLIANCE WITH ATTACHED~~
"GENERAL REQUIREMENTS"

23. Proposed Casing and Cementing Program
See Operations Plan attached

24. Authorized by: Regulatory/Compliance Administrator

5-20-98
Date

PERMIT NO.

APPROVAL DATE

AUG 17 1998

APPROVED BY /s/ Duane W. Spencer

TITLE

DATE AUG 17 1998

Archaeological Report to be submitted

Threatened and Endangered Species Report to be submitted

NOTE: This format is issued in lieu of U.S. BLM Form 3160-3

Title 18 U.S.C. Section 1001, makes it a crime for any person knowingly and willfully to make to any department or agency of the United States any false, fictitious or fraudulent statements or presentations as to any matter within its jurisdiction.

NEL-4078 (5)

NMOCD

the 1990s, the number of people in the world who are under 15 years of age is expected to increase from 1.1 billion to 1.5 billion. The number of people aged 65 and over is expected to increase from 200 million to 400 million. The number of people aged 15 and over is expected to increase from 3.5 billion to 4.5 billion. The number of people aged 15 and over is expected to increase from 3.5 billion to 4.5 billion. The number of people aged 15 and over is expected to increase from 3.5 billion to 4.5 billion.

1997
 1998
 1999

District I
PO Box 1980, Hobbs NM 88241-1980
District II
PO Drawer KK, Artesia, NM 87211-0719
District III
1000 Rio Brazos Rd., Aztec, NM 87410
District IV
PO Box 2088, Santa Fe, NM 87504-2088

State of New Mexico
Energy, Minerals & Natural Resources Department

OIL CONSERVATION DIVISION
PO Box 2088
Santa Fe, NM 87504-2088

Form C
Revised February 21, 1998

Instructions on
Submit to Appropriate District Office
State Lease - 4 C
Fee Lease - 3 C

☐ AMENDED REPORT

WELL LOCATION AND ACREAGE DEDICATION PLAT

1 API Number 30-039-25944		2 Pool Code 72319/71599		3 Pool Name Blanco Mesaverde/Basin Dakota		
4 Property Code 7452		5 Property Name SAN JUAN 27-4 UNIT			6 Well Number # 49M	
7 OGRID No. 14538		8 Operator Name BURLINGTON RESOURCES OIL & GAS COMPANY			9 Elevation 6698	

10 Surface Location

UL or Lot No. E	Section 30	Township 27 N	Range 4 W	Lot Idn	Feet from the 1880	North/South line NORTH	Feet from the 790	East/West line WEST	County RIO AR
--------------------	---------------	------------------	--------------	---------	-----------------------	---------------------------	----------------------	------------------------	------------------

11 Bottom Hole Location If Different From Surface

UL or lot no.	Section	Township	Range	Lot Idn	Feet from the	North/South line	Feet from the	East/West line	County
---------------	---------	----------	-------	---------	---------------	------------------	---------------	----------------	--------

12 Dedicated Acres MV-W/321.56 DK-W/321.56	13 Joint or Infill 56	14 Consolidation Code	15 Order No.
--	--------------------------	-----------------------	--------------

NO ALLOWABLE WILL BE ASSIGNED TO THIS COMPLETION UNTIL ALL INTEREST HAVE BEEN CONSOLIDATED
OR A NON-STANDARD UNIT HAS BEEN APPROVED BY THE DIVISION

16		5293'(R)		17 OPERATOR CERTIFICATE I hereby certify that the information contained hereon is true and complete to the best of my knowledge and belief. Signature: <u>Peggy Bradfield</u> Printed Name: <u>Peggy Bradfield</u> Title: <u>Regulatory Administrator</u> Date: <u>5-20-98</u>	
Lot 1 1880'					
Lot 2 790'					
Lot 3 NMSF - 080670		30			
Lot 4 6 7/8					
		5293'(R)		18 SURVEYOR CERTIFICATE I hereby certify that the well location shown on this plat was plotted from field notes of actual surveys made or under my supervision, and that the same is correct to the best of my belief. February 11, 1998 Date of Survey Signature and Seal of Professional Surveyor 7016 Certificate Number	

OPERATIONS PLAN

Well Name: San Juan 27-4 Unit #49M
Location: 1880' FNL, 790' FWL Sec 30, T-27-N, R-4-W
Rio Arriba County, NM
Latitude 36° 32' 47", Longitude 107° 17' 52"
Formation: Blanco Mesa Verde/Basin Dakota
Elevation: 6698' GL

<u>Formation Tops:</u>	<u>Top</u>	<u>Bottom</u>	<u>Contents</u>
Surface	San Jose	2930'	
Ojo Alamo	2930'	3063'	aquifer
Kirtland	3063'	3145'	
Fruitland	3145'	3519'	gas
Pictured Cliffs	3519'	3620'	gas
Lewis	3620'	3993'	gas
Intermediate TD	3720'		
Huerfanito Bentonite	3993'	4504'	gas
Chacra	4504'	5212'	
Massive Cliff House	5212'	5340'	gas
Menefee	5340'	5691'	gas
Massive Point Lookout	5691'	6196'	gas
Mancos Shale	6196'	6851'	
Gallup	6851'	7643'	gas
Greenhorn	7643'	7703'	gas
Dakota	7703'		gas
TD (4 1/2" liner)	7983'		

Logging Program:

Cased hole - CBL - TD to 200' above TOC, GR/CNL across MV/Dk

Mud Program:

<u>Interval</u>	<u>Type</u>	<u>Weight</u>	<u>Vis.</u>	<u>Fluid Loss</u>
0- 200'	Spud	8.4-9.0	40-50	no control
200-3720'	LSND	8.4-9.0	30-60	no control
3720-7983'	Gas	n/a	n/a	n/a

Pit levels will be visually monitored to detect gain or loss of fluid control.

Casing Program (as listed, the equivalent, or better):

<u>Hole Size</u>	<u>Depth Interval</u>	<u>Csq. Size</u>	<u>Wt.</u>	<u>Grade</u>
12 1/4"	0' - 200'	9 5/8"	32.3#	WC-50
8 3/4"	0' - 3720'	7"	20.0#	J-55
6 1/4"	3620' - 7983'	4 1/2"	10.5#	J-55

Tubing Program:

0' - 7983' 2 3/8" 4.70# EUE

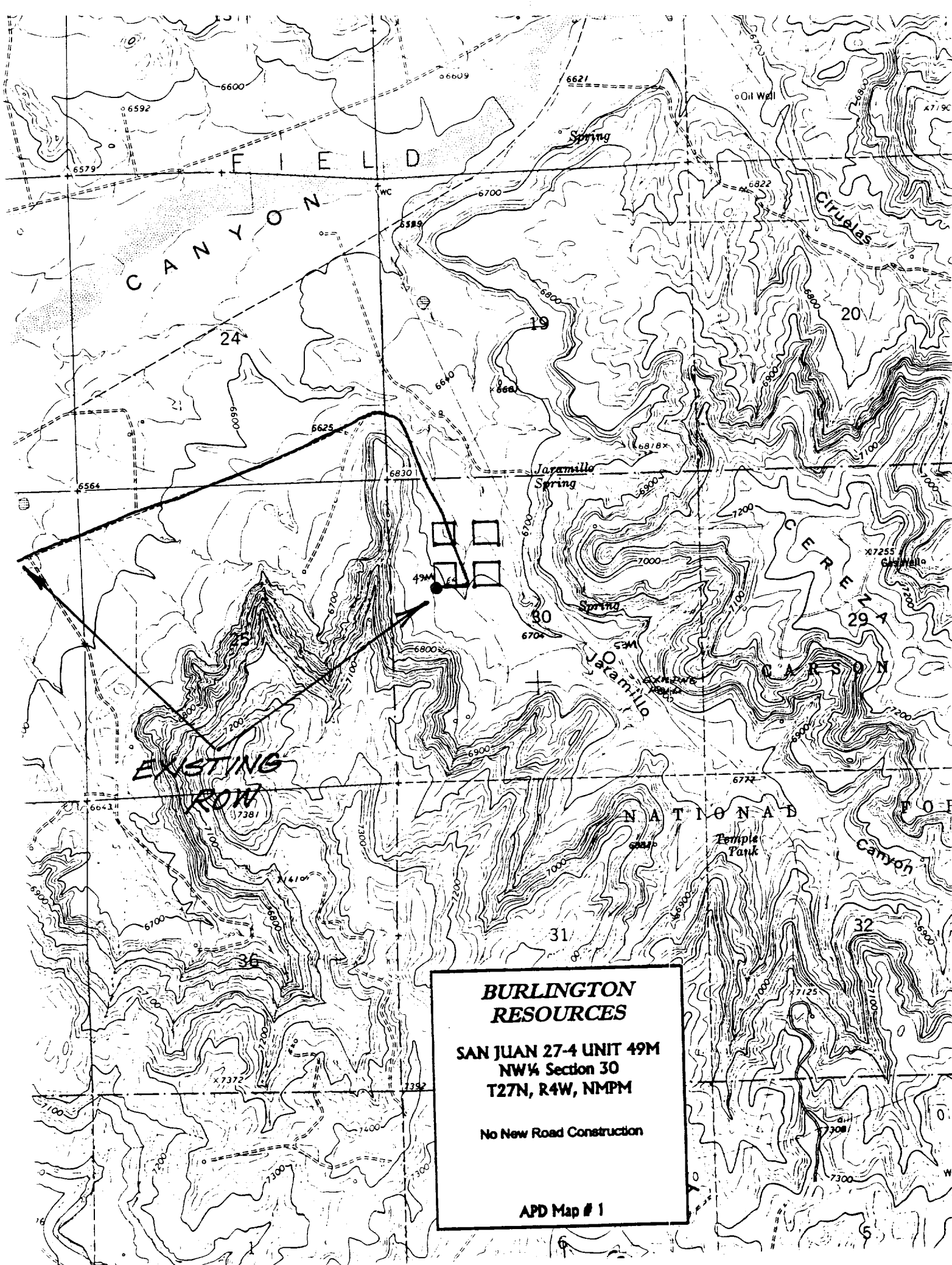
BOP Specifications, Wellhead and Tests:

Surface to Intermediate TD -

11" 2000 psi minimum double gate BOP stack (Reference Figure #1).
After nipple-up prior to drilling out surface casing, rams and casing will be tested to 600 psi for 30 minutes.

Intermediate TD to Total Depth -

11" 2000 psi minimum double gate BOP stack (Reference Figure #1).
After nipple-up prior to drilling out intermediate casing, rams and casing will be tested to 1500 psi for 30 minutes.



**BURLINGTON
RESOURCES**

**SAN JUAN 27-4 UNIT 49M
NW 1/4 Section 30
T27N, R4W, NMPM**

No New Road Construction

APD Map # 1