

UNITED STATES
DEPARTMENT OF THE INTERIOR
BUREAU OF LAND MANAGEMENT

APPLICATION FOR PERMIT TO DRILL, DEEPEN, OR PLUG BACK

| | | |
|---|---|---|
| 1a. Type of Work DRILL | 5. Lease Number SF-080668 Unit Reporting Number 8910010540-Dk 891001054A-MV Indian, All. or Tribe | |
| 1b. Type of Well GAS | 6. Unit Agreement Name | |
| 2. Operator BURLINGTON RESOURCES 14538 Oil & Gas Company | 7. Unit Agreement Name San Juan 27-4 Unit | |
| 3. Address & Phone No. of Operator PO Box 4239, Farmington, NM 87499 (505) 326-9700 | 8. Farm or Lease Name San Juan 27-4 Unit 9. Well Number 59M | |
| 4. Location of Well 1630' FSL, 1010' FEL Latitude 36° 35' 57", Longitude 107° 15' 03" | 10. Field, Pool, Wildcat Blanco MV/Basin Dk 11. Sec., Twn, Rge, Mer. (NMPM) Sec 4, T-27-N, R-4-W API # 30-039-25962 | |
| 14. Distance in Miles from Nearest Town 60 miles to Bloomfield | 12. County RA | 13. State NM |
| 15. Distance from Proposed Location to Nearest Property or Lease Line 1010' | 17. Acres Assigned to Well E 319.2 E 319.2 | |
| 18. Distance from Proposed Location to Nearest Well, Drlg, Compl, or Applied for on this Lease 2500' | 20. Rotary or Cable Tools Rotary | |
| 19. Proposed Depth 8504' | 21. Elevations (DF, FT, GR, Etc.) 7166' GR | 22. Approx. Date Work will Start 5-30-98 |
| 23. Proposed Casing and Cementing Program See Operations Plan attached | DRILLING OPERATIONS AUTHORIZED ARE SUBJECT TO COMPLIANCE WITH ATTACHED "GENERAL REQUIREMENTS" | |
| 24. Authorized by: <u>[Signature]</u> Regulatory/Compliance Administrator | Date | |

PERMIT NO. _____ APPROVAL DATE SEP 03 1998
APPROVED BY /s/ Duane W. Spencer TITLE _____ DATE SEP - 4 1998

Archaeological Report to be submitted
Threatened and Endangered Species Report to be submitted
NOTE: This format is issued in lieu of U.S. BLM Form 3160-3
Title 18 U.S.C. Section 1001, makes it a crime for any person knowingly and willfully to make to any department or agency of the United States any false, fictitious or fraudulent statements or presentations as to any matter within its jurisdiction.

UK @

NMOCD

District I
 PO Box 1980, Hobbs NM 88241-1980
 District II
 PO Drawer KK, Azusa, NM 87211-0719
 District III
 1000 Rio Brazos Rd., Aztec, NM 87410
 District IV
 PO Box 2088, Santa Fe, NM 87504-2088

State of New Mexico
 Energy, Minerals & Natural Resources Department
OIL CONSERVATION DIVISION
 PO Box 2088
 Santa Fe, NM 87504-2088

Form
 Revised February .
 Instructions
 Submit to Appropriate District
 State Lease - -
 Fee Lease - -
 AMENDED R

WELL LOCATION AND ACREAGE DEDICATION PLAT

| | | |
|----------------------------|---|--|
| API Number 30-039-25962 | Pool Code 72319/71599 | Pool Name Blanco Mesaverde/Basin Dakota |
| Property Code 7452 | Property Name SAN JUAN 27-4 UNIT | Well Number # 591 |
| OCRID No. 14538 | Operator Name BURLINGTON RESOURCES OIL & GAS COMPANY | Elevation 7160 |

Surface Location

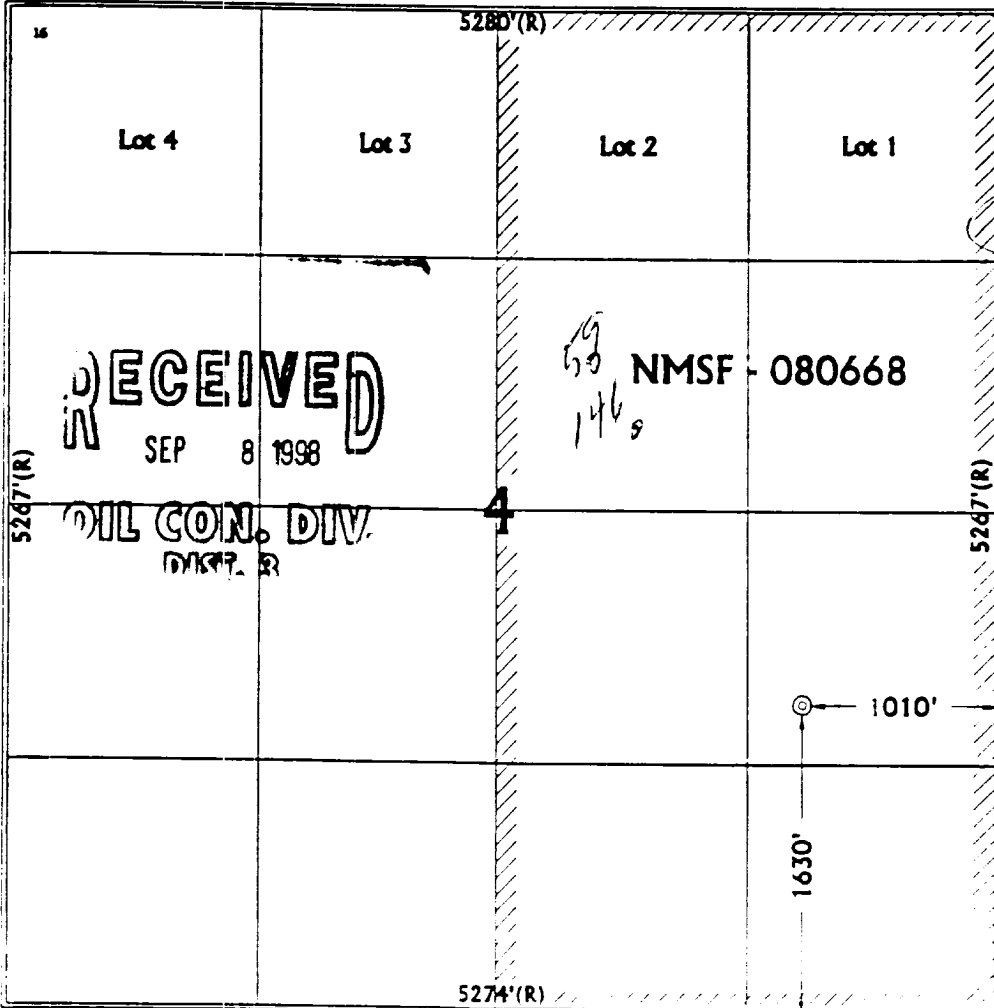
| UL or Lot No. | Section | Township | Range | Lot Idn | Feet from the | North/South line | Feet from the | East/West line | County |
|---------------|---------|----------|-------|---------|---------------|------------------|---------------|----------------|--------|
| I | 4 | 27 N | 4 W | | 1630 | SOUTH | 1010 | EAST | RIO A |

Bottom Hole Location If Different From Surface

| UL or lot no. | Section | Township | Range | Lot Idn | Feet from the | North/South line | Feet from the | East/West line | County |
|---------------|---------|----------|-------|---------|---------------|------------------|---------------|----------------|--------|
| | | | | | | | | | |

Dedicated Acres
 MV-E/319.20
 DK-E/319.20

NO ALLOWABLE WILL BE ASSIGNED TO THIS COMPLETION UNTIL ALL INTEREST HAVE BEEN CONSOLIDATED OR A NON-STANDARD UNIT HAS BEEN APPROVED BY THE DIVISION



OPERATOR CERTIFICATION

I hereby certify that the information contained here is true and complete to the best of my knowledge.

Peggy Bradfield
 Signature
 Peggy Bradfield
 Printed Name
 Regulatory Administrator
 Title
 5-30-98
 Date

SURVEYOR CERTIFICATION

I hereby certify that the well location shown on this plat was plotted from field notes of actual surveys or under my supervision, and that the same is correct to the best of my belief.

April 28, 1998
 Date of Survey
 Signature and Seal of Professional Surveyor



7016
 Certificate Number

OPERATIONS PLAN

Well Name: San Juan 27-4 Unit #59M
Location: 1630' FSL, 1010' FEL Sec 4, T-27-N, R-4-W
Rio Arriba County, NM
Latitude 36° 35' 57", Longitude 107° 15' 03"
Formation: Blanco Mesa Verde/Basin Dakota
Elevation: 7166'GL

| <u>Formation Tops:</u> | <u>Top</u> | <u>Bottom</u> | <u>Contents</u> |
|--------------------------|--------------|---------------|-----------------|
| Surface | San Jose | 3457' | |
| Ojo Alamo | 3457' | 3632' | aquifer |
| Kirtland | 3632' | 3670' | |
| Fruitland | 3670' | 4012' | gas |
| Pictured Cliffs | 4012' | 4155' | gas |
| Lewis | 4155' | 4589' | gas |
| Intermediate TD | 4255' | | |
| Huerfano Bentonite | 4589' | 5019' | gas |
| Chacra | 5019' | 5827' | |
| Massive Cliff House | 5827' | 5890' | gas |
| Menefee | 5890' | 6207' | gas |
| Massive Point Lookout | 6207' | 6760' | gas |
| Mancos Shale | 6760' | 7380' | |
| Gallup | 7380' | 8159' | gas |
| Greenhorn | 8159' | 8224' | gas |
| Dakota | 8224' | | gas |
| TD (4 1/2" liner) | 8504' | | |

Logging Program:

Cased hole - CBL - TD to 200' above TOC, GR/CNL across MV/Dk

Mud Program:

| <u>Interval</u> | <u>Type</u> | <u>Weight</u> | <u>Vis.</u> | <u>Fluid Loss</u> |
|-----------------|-------------|---------------|-------------|-------------------|
| 0- 200' | Spud | 8.4-9.0 | 40-50 | no control |
| 200-4255' | LSND | 8.4-9.0 | 30-60 | no control |
| 4255-8504' | Gas | n/a | n/a | n/a |

Pit levels will be visually monitored to detect gain or loss of fluid control.

Casing Program (as listed, the equivalent, or better):

| <u>Hole Size</u> | <u>Depth Interval</u> | <u>Csg. Size</u> | <u>Wt.</u> | <u>Grade</u> |
|------------------|-----------------------|------------------|------------|--------------|
| 12 1/4" | 0' - 200' | 9 5/8" | 32.3# | WC-50 |
| 8 3/4" | 0' - 4255' | 7" | 20.0# | J-55 |
| 6 1/4" | 4155' - 8504' | 4 1/2" | 10.5# | J-55 |

Tubing Program:

0' - 8504' 2 3/8" 4.70# EUE

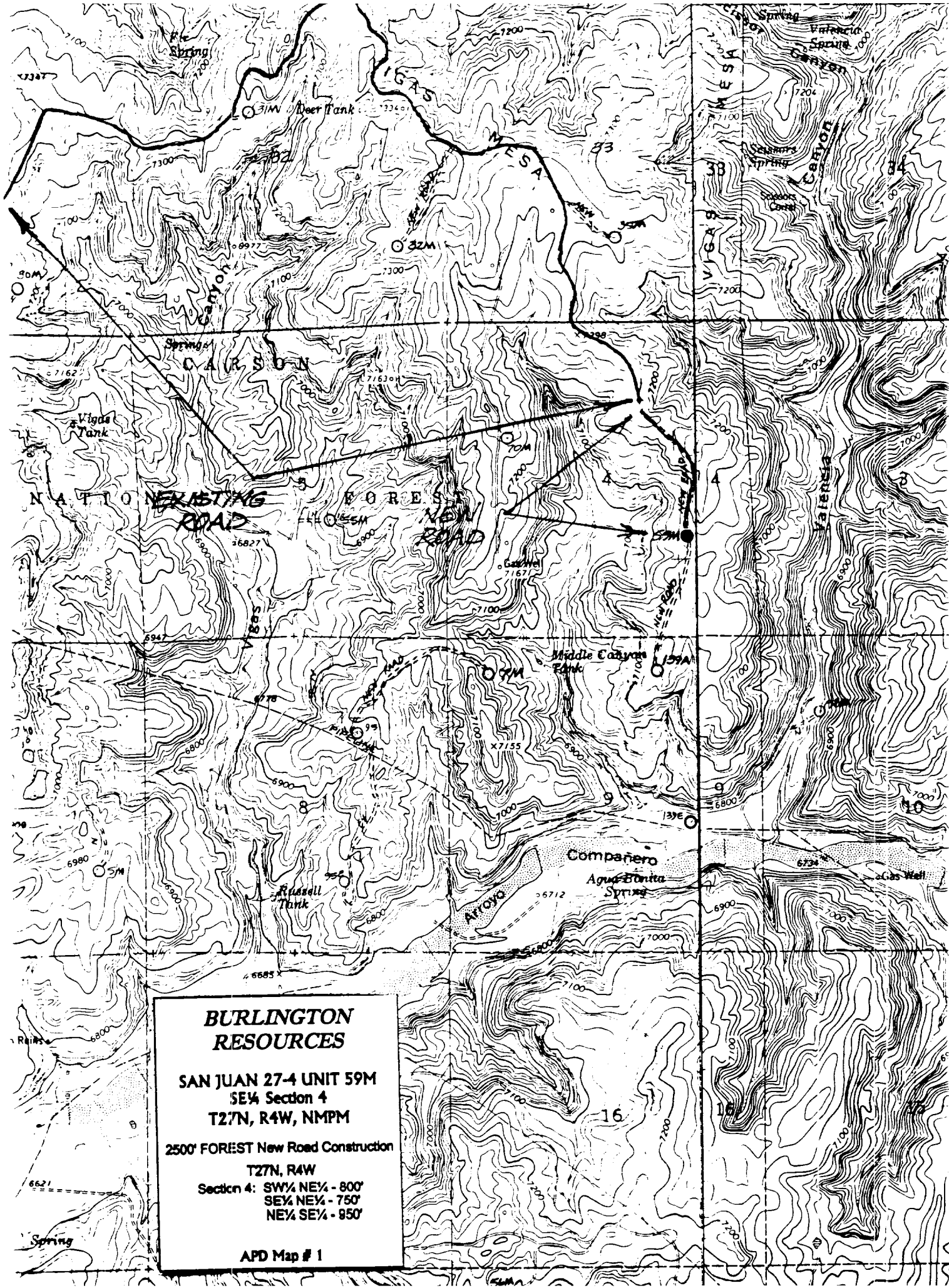
BOP Specifications, Wellhead and Tests:

Surface to Intermediate TD -

11" 2000 psi minimum double gate BOP stack (Reference Figure #1).
After nipple-up prior to drilling out surface casing, rams and casing will be tested to 600 psi for 30 minutes.

Intermediate TD to Total Depth -

11" 2000 psi minimum double gate BOP stack (Reference Figure #1).
After nipple-up prior to drilling out intermediate casing, rams and casing will be tested to 1500 psi for 30 minutes.



**BURLINGTON
RESOURCES**

**SAN JUAN 27-4 UNIT 59M
SE¼ Section 4
T27N, R4W, NMPM**

2500' FOREST New Road Construction

T27N, R4W

**Section 4: SW¼ NE¼ - 800'
SE¼ NE¼ - 750'
NE¼ SE¼ - 950'**

APD Map # 1