

RECEIVED
BLM
58 MAR 13 PM 1:35
070 FARMINGTON, NM

58 MAR 13 PM 1:35
070 FARMINGTON, NM

RECEIVED
OCT - 3 1966
OIL CONL. DIV.
107° 17' 13" E

20. Rotary or Cable Tools

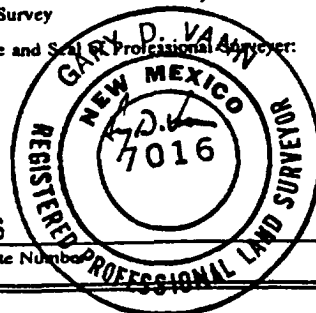
Rotary

2/12/98
Date

DATE OCT - 6 - 1998

RMFOOD

(R)- GLO RECORD 5292'(K)



OPERATIONS PLAN

Well Name: San Juan 27-4 Unit #53M
Location: 2005' FSL, 1595' FEL Sec 30, T-27-N, R-4-W
Rio Arriba County, NM
Latitude 36° 32.3, Longitude 107° 17.13
Formation: Blanco Mesa Verde/Basin Dakota
Elevation: 6733' GL

<u>Formation Tops:</u>	<u>Top</u>	<u>Bottom</u>	<u>Contents</u>
Surface	San Jose	2977'	
Ojo Alamo	2977'	3078'	aquifer
Kirtland	3078'	3192'	
Fruitland	3192'	3556'	gas
Pictured Cliffs	3556'	3635'	gas
Lewis	3635'	4015'	gas
Intermediate TD	3735'		
Huerfano Bentonite	4015'	4517'	gas
Chacra	4517'	5243'	
Massive Cliff House	5243'	5368'	gas
Menefee	5368'	5725'	gas
Massive Point Lookout	5725'	6871'	gas
Gallup	6871'	7672'	gas
Greenhorn	7672'	7872'	gas
Dakota	7872'		gas
TD (4 1/2" liner)	8017'		

Logging Program:

Cased hole - CBL - TD to 200' above TOC, GR/CNL across MV/Dk

Mud Program:

<u>Interval</u>	<u>Type</u>	<u>Weight</u>	<u>Vis.</u>	<u>Fluid Loss</u>
0- 200'	Spud	8.4-9.0	40-50	no control
200-3735'	LSND	8.4-9.0	30-60	no control
3735-8017'	Gas	n/a	n/a	n/a

Pit levels will be visually monitored to detect gain or loss of fluid control.

Casing Program (as listed, the equivalent, or better):

<u>Hole Size</u>	<u>Depth Interval</u>	<u>Csq. Size</u>	<u>Wt.</u>	<u>Grade</u>
12 1/4"	0' - 200'	9 5/8"	32.3#	WC-50
8 3/4"	0' - 3735'	7"	20.0#	J-55
6 1/4"	3635' - 8017'	4 1/2"	10.5#	K-55

Tubing Program:

0' - 8017'	2 3/8"	4.70#	EUE
------------	--------	-------	-----

**BURLINGTON
RESOURCES**

**San Juan 27-4 Unit #53M
T27N, R4W**

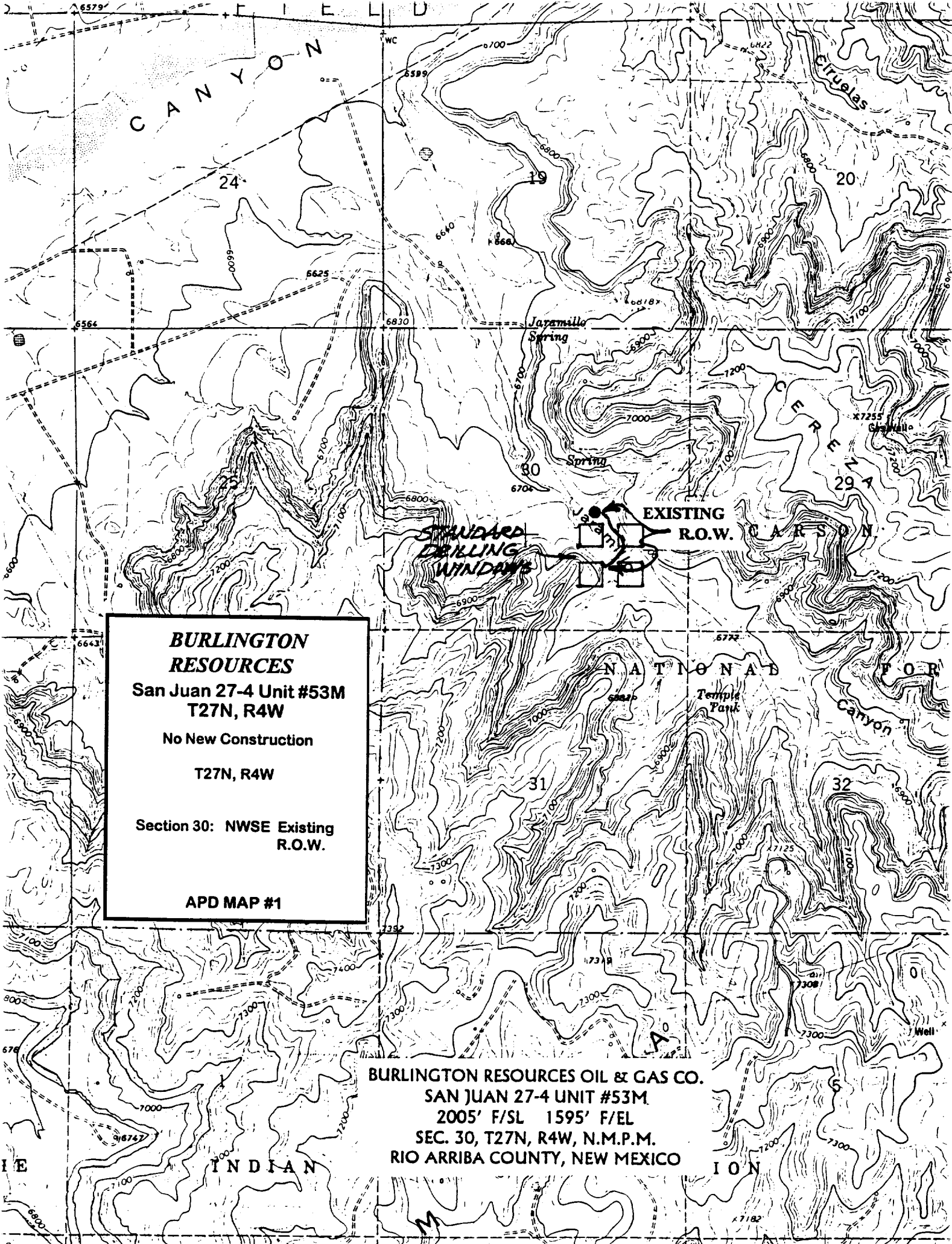
No New Construction

T27N, R4W

**Section 30: NWSE Existing
R.O.W.**

APD MAP #1

**BURLINGTON RESOURCES OIL & GAS CO.
SAN JUAN 27-4 UNIT #53M
2005' F/SL 1595' F/EL
SEC. 30, T27N, R4W, N.M.P.M.
RIO ARriba COUNTY, NEW MEXICO**





NEW MEXICO ENERGY, MINERALS
& NATURAL RESOURCES DEPARTMENT

OIL CONSERVATION DIVISION
2040 South Pacheco Street
Santa Fe, New Mexico 87505
(505) 827-7131

April 20, 1998

Burlington Resources Oil & Gas Company
P. O. Box 4289
Farmington, New Mexico 87499-4289
Attention: Peggy Bradfield

RECEIVED
MAY - 1 1998

OIL CON. DIV.
DIST. 3

53 M
Administrative Order NSL-4012

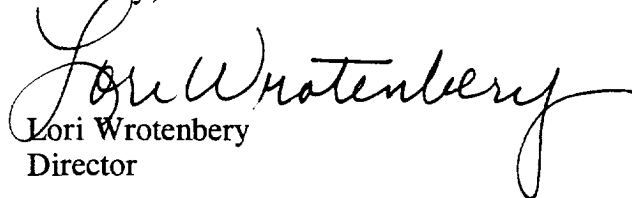
Dear Ms. Bradfield:

Reference is made to your application dated April 13, 1998, for an unorthodox "infill" gas well location in both the Blanco-Mesaverde and Basin-Dakota Pools for your proposed San Juan "27-4" Unit Well No. 53-M to be drilled 2005 feet from the South line and 1595 feet from the East line (Unit J) of Section 30, Township 27 North, Range 4 West, NMPM, Rio Arriba County, New Mexico.

Gas production attributed to said well from both pools is to be included in the existing standard 320-acre gas spacing and proration units comprising the E/2 of said Section 30. The Mesaverde production is currently dedicated to your San Juan "27-4" Unit Well No. 21 (API No. 30-039-06937), located at a standard gas well location 850 feet from the North line and 1800 feet from the East line (Unit B) of said Section 30, and the Dakota production is currently dedicated to the San Juan "27-4" Unit Well No. 53 (API No. 30-039-20150), located at a standard gas well location 900 feet from the North line and 1460 feet from the East line (Unit B) of said Section 30.

By the authority granted me under the provisions of Rule 2(d) of the "General Rules for the Prorated Gas Pools of New Mexico/Special Rules and Regulations for the Blanco-Mesaverde Pool/Special Rules and Regulations for the Basin-Dakota Pool," as promulgated by Division Order No. R-8170, as amended, the above-described unorthodox "infill" Dakota/Mesaverde gas well location for the San Juan "27-4" Unit Well No. 53-M is hereby approved.

Sincerely,


Lori Wrotenbery
Director

LW/MES/kv

cc: New Mexico Oil Conservation Division - Aztec /
U. S. Bureau of Land Management - Farmington
U.S. Forest Service - Bloomfield

BURLINGTON RESOURCES

SAN JUAN DIVISION

April 13, 1998

Sent Federal Express

Ms. Lori Wrotenbery, Director
New Mexico Oil Conservation Division
2040 South Pacheco
Santa Fe, New Mexico 87505

RECEIVED
APR 14 1998
OIL CON. DIV.
BUREAU

Re: San Juan 27-4 Unit #53M
2005' FSL, 1595' FEL, Section 30, T-27-N, R-4-W, Rio Arriba County, NM
30-039-not assigned

Dear Ms. Wrotenbery:

Burlington Resources is applying for administrative approval of an unorthodox gas well location for both the Mesa Verde and Dakota pools. This application for the referenced location is for topographic reasons and at the request of the Carson National Forest Service.

Production from the Blanco Mesa Verde pool is to be included in an existing 320 acre gas spacing and proration unit comprising of the East half (E/2) of Section 30 which is currently dedicated to Burlington's San Juan 27-4 Unit #21 (API 30-039-06937), located at a standard gas well location of 850' FNL, 1800' FEL of said Section 30. Production from the Basin Dakota pool is to be included in an existing 320 acre gas spacing and proration unit comprising of the East half (E/2) of Section 30 which is currently dedicated to Burlington's San Juan 27-4 Unit #53 (API 30-039-20150), located at a standard gas well location of 900' FNL 1460' FEL of said Section 30.

The following attachments are for your review:

1. Application for Permit to Drill.
2. Completed C-102 at referenced location.
3. Offset operators/owners plat - Burlington is the operator of the unit.
4. 7.5 minute topographic map, and enlargement of the map to define topographic features.

We appreciate your earliest consideration of this application.

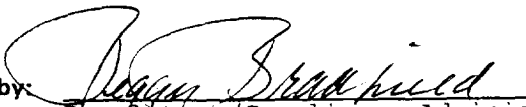
Sincerely,



Peggy Bradfield
Regulatory/Compliance Administrator

xc: NMOCD - Aztec District Office
Bureau of Land Management - Farmington District Office

APPLICATION FOR PERMIT TO DRILL, DEEPEN, OR PLUG BACK

1a. Type of Work DRILL	5. Lease Number SF-080670 Unit Reporting Number
1b. Type of Well GAS	6. If Indian, All. or Tribe
2. Operator BURLINGTON RESOURCES Oil & Gas Company	7. Unit Agreement Name San Juan 27-4 Unit
3. Address & Phone No. of Operator PO Box 4289, Farmington, NM 87499 (505) 326-9700	8. Farm or Lease Name San Juan 27-4 Unit 9. Well Number 53M
4. Location of Well 2005' FSL, 1595' FEL Latitude 36° 32.3, Longitude 107° 17.13	10. Field, Pool, Wildcat Blanco MV/Basin Dk 11. Sec., Twn, Rge, Mer. (NMPM) Sec 30, T-27-N, R-4-W API # 30-039-
14. Distance in Miles from Nearest Town 50 miles to Blanco	12. County Rio Arriba 13. State NM
15. Distance from Proposed Location to Nearest Property or Lease Line 1595'	17. Acres Assigned to Well 320 E/2
16. Acres in Lease	
18. Distance from Proposed Location to Nearest Well, Drlg, Compl, or Applied for on this Lease 200'	20. Rotary or Cable Tools Rotary
19. Proposed Depth 8017	
21. Elevations (DF, FT, GR, Etc.) 6733' GR	22. Approx. Date Work will Start
23. Proposed Casing and Cementing Program See Operations Plan attached	
24. Authorized by:  Regulatory/Compliance Administrator	<u>2/12/98</u> Date

PERMIT NO. _____ APPROVAL DATE _____
APPROVED BY _____ TITLE _____ DATE _____

Archaeological Report to be submitted by Arboles Contract Archaeology

NOTE: This format is issued in lieu of U.S. BLM Form 3160-3

Market I
O Box 1980, Hobbs, NM 88241-1980
Market II
O Drawer DD, Artesia, NM 88211-0719
Market III
800 Rio Brazos Rd., Aztec, NM 87410
Market IV
O Box 2088, Santa Fe, NM 87504-2088

State of New Mexico
Energy, Minerals & Natural Resources Department

OIL CONSERVATION DIVISION
PO Box 2088
Santa Fe, NM 87504-2088

Form 1
Revised February 21,
Instructions or
Submit to Appropriate District
State Lease - 4 C
Fee Lease - 3 C

☐ AMENDED RE:

WELL LOCATION AND ACREAGE DEDICATION PLAT

API Number	Pool Code	Pool Name
30-039-	72319/71599	Blanco Mesaverde/Basin Dakota
Property Code	Property Name	Well Number
7452	SAN JUAN 27-4 UNIT	# 53M
OGRID No.	Operator Name	Elevation
14538	BURLINGTON RESOURCES OIL & GAS COMPANY	6733

10 Surface Location

UL or lot no.	Section	Township	Range	Lot Idn	Feet from the	North/South line	Feet from the	East/West line	County
J	30	27 N	4 W		2005	SOUTH	1595	EAST	RIO AR

11 Bottom Hole Location If Different From Surface

UL or lot no.	Section	Township	Range	Lot Idn	Feet from the	North/South line	Feet from the	East/West line	County

Dedicated Acres	Joint or Infill	Consolidation Code	Order No.
4V-E/320			
DK-E/320			

NO ALLOWABLE WILL BE ASSIGNED TO THIS COMPLETION UNTIL ALL INTERESTS HAVE BEEN CONSOLIDATED OR A NON-STANDARD UNIT HAS BEEN APPROVED BY THE DIVISION

16	Lot 1	5293'(R)	NMSF-080670	5290'(R)	5196.84'
Lot 2					
Lot 3	1595'				
Lot 4	2005'				

17 OPERATOR CERTIFICATE

I hereby certify that the information contained herein is true and complete to the best of my knowledge and belief.

Peggy Bradfield

Signature

Peggy Bradfield

Printed Name

Regulatory Administrator

Title

2/12/98

Date

18 SURVEYOR CERTIFICATE

I hereby certify that the well location shown on this plat was plotted from field notes of actual surveys made or under my supervision, and that the same is true and correct to the best of my belief.

November 21, 1997

Date of Survey

Signature and Seal of Professional Approver:

GARY D. VAAH

NEW MEXICO

REGISTERED PROFESSIONAL LAND SURVEYOR

7016

Certificate Number

(R) - GLO RECORD 5292'(R)

OPERATIONS PLAN

Well Name: San Juan 27-4 Unit #53M
Location: 2005'FSL, 1595'FEL Sec 30, T-27-N, R-4-W
Rio Arriba County, NM
Latitude 36° 32.3, Longitude 107° 17.13
Formation: Blanco Mesa Verde/Basin Dakota
Elevation: 6733'GL

<u>Formation Tops:</u>	<u>Top</u>	<u>Bottom</u>	<u>Contents</u>
Surface	San Jose	2977'	
Ojo Alamo	2977'	3078'	aquifer
Kirtland	3078'	3192'	
Fruitland	3192'	3556'	gas
Pictured Cliffs	3556'	3635'	gas
Lewis	3635'	4015'	gas
Intermediate TD	3735'		
Huerfanito Bentonite	4015'	4517'	gas
Chacra	4517'	5243'	
Massive Cliff House	5243'	5368'	gas
Menefee	5368'	5725'	gas
Massive Point Lookout	5725'	6871'	gas
Gallup	6871'	7672'	gas
Greenhorn	7672'	7872'	gas
Dakota	7872'		gas
TD (4 1/2"liner)	8017'		

Logging Program:

Cased hole - CBL - TD to 200' above TOC, GR/CNL across MV/Dk

Mud Program:

<u>Interval</u>	<u>Type</u>	<u>Weight</u>	<u>Vis.</u>	<u>Fluid Loss</u>
0- 200'	Spud	8.4-9.0	40-50	no control
200-3735'	LSND	8.4-9.0	30-60	no control
3735-8017'	Gas	n/a	n/a	n/a

Pit levels will be visually monitored to detect gain or loss of fluid control.

Casing Program (as listed, the equivalent, or better):

<u>Hole Size</u>	<u>Depth Interval</u>	<u>Csq.Size</u>	<u>Wt.</u>	<u>Grade</u>
12 1/4"	0' - 200'	9 5/8"	32.3#	WC-50
8 3/4"	0' - 3735'	7"	20.0#	J-55
6 1/4"	3635' - 8017'	4 1/2"	10.5#	K-55

Tubing Program:

0' - 8017'	2 3/8"	4.70# EUE
------------	--------	-----------

BOP Specifications, Wellhead and Tests:

Surface to Intermediate TD -

11" 2000 psi minimum double gate BOP stack (Reference Figure #1).
After nipple-up prior to drilling out surface casing, rams and casing will be tested to 600 psi for 30 minutes.

Intermediate TD to Total Depth -

11" 2000 psi minimum double gate BOP stack (Reference Figure #1).
After nipple-up prior to drilling out intermediate casing, rams and casing will be tested to 1500 psi for 30 minutes.

Surface to Total Depth -

2" nominal, 2000 psi minimum choke manifold (Reference Figure #3).

Completion Operations -

7 1/16" 2000 psi double gate BOP stack (Reference Figure #2).
After nipple-up prior to completion, pipe rams, casing and liner top will be tested to 2000 psi for 15 minutes.

Wellhead -

9 5/8" x 7" x 2 3/8" x 3000 psi tree assembly.

General -

- Pipe rams will be actuated once each day and blind rams will be actuated once each trip to test proper functioning.
- An upper kelly cock valve with handle available and drill string valves to fit each drill string will be available on the rig floors at all times.
- BOP pit level drill will be conducted weekly for each drilling crew.
- All BOP tests and drills will be recorded in daily drilling reports.
- Blind and pipe rams will be equipped with extension hand wheels.

Cementing:

9 5/8" surface casing - cement with 163 sx Class "B" cement with 1/4# flocele/sx and 2% calcium chloride (188 cu.ft. of slurry, 200% excess to circulate to surface). WOC 8 hrs. Test casing to 600 psi for 30 minutes.

Saw tooth guide shoe on bottom. Bowspring centralizers will be run in accordance with Onshore Order #2.

7" intermediate casing -

Lead w/303 sx Class "B" w/3% metasilicate, 10# gilsonite/sx and 1/2# flocele/sx. Tail w/90 sx 50/50 Class "B" Poz w/2% calcium chloride, 2% gel, 1/2# flocele/sx, 10# gilsonite/sx (982 cu.ft. of slurry, 75% excess to circulate to surface.) WOC minimum of 8 hours before drilling out intermediate casing. If cement does not circulate to surface, a CBL will be run during completion operations to determine TOC. Test casing to 1500 psi for 30 minutes.

Cement nose guide shoe on bottom with float collar spaced on top of shoe joint. Bowspring centralizers spaced every other joint off bottom, to the base of the Ojo Alamo at 3078'. Two turbolating centralizers at the base of the Ojo Alamo at 3078'. Bowspring centralizers spaced every fourth joint from the base of the Ojo Alamo to the base of the surface casing.

4 1/2" Production Liner -

Cement to cover minimum of 100' of 4 1/2" x 7" overlap. Cement with 473 sx 50/50 Class "B" Poz with 2% gel, 1/4# flocele/sx, 5# gilsonite/sx, and 0.4% fluid loss additive (629 cu.ft., 40% excess to cement 4 1/2" x 7" overlap). WOC a minimum of 18 hrs prior to completing.

Cement float shoe on bottom with float collar spaced on top of shoe joint.

Note: To facilitate higher hydraulic stimulation completion work, no liner hanger will be used. Instead, a long string of 4 1/2" casing will be run and cemented with a minimum of 100' of cement overlap between the 4 1/2" x 7" casing strings. After completion of the well, a 4 1/2" CIBP will be set above the last fracturing job to cut and pull the 4 1/2" casing above the 7" casing shoe. The 4 1/2" bridge plug will then be milled and the two strings of tubing will be run for a dual completion.

Special Drilling Operations (Gas/Mist Drilling):

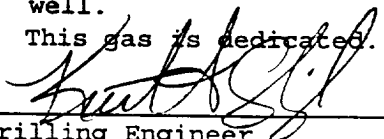
The following equipment will be operational while gas/mist drilling:

- An anchored blooie line will be utilized to discharge all cuttings and circulating medium to the blow pit a minimum of 100' from the wellhead.
- The blooie line will be equipped with an automatic igniter or pilot light.
- Compressors will be located a minimum of 100' from the wellhead in the opposite direction from the blooie line.
- Engines will have spark arresters or water cooled exhaust.
- Deduster equipment will be utilized.
- The rotating head will be properly lubricated and maintained.
- A float valve will be utilized above the bit.
- Mud circulating equipment, water, and mud materials will be sufficient to maintain control of the well.

Additional Information:

- The Dakota and Mesa Verde formations will be completed and commingled.
- No abnormal temperatures or hazards are anticipated.
- Anticipated pore pressures are as follows:

Fruitland Coal	800 psi
Pictured Cliffs	800 psi
Mesa Verde	700 psi
Dakota	2500 psi
- Sufficient LCM will be added to the mud system to maintain well control, if lost circulation is encountered.
- The east half is dedicated to the Mesa Verde and the Dakota in this well.
- This gas is dedicated.



Drilling Engineer

2/17/98

Date

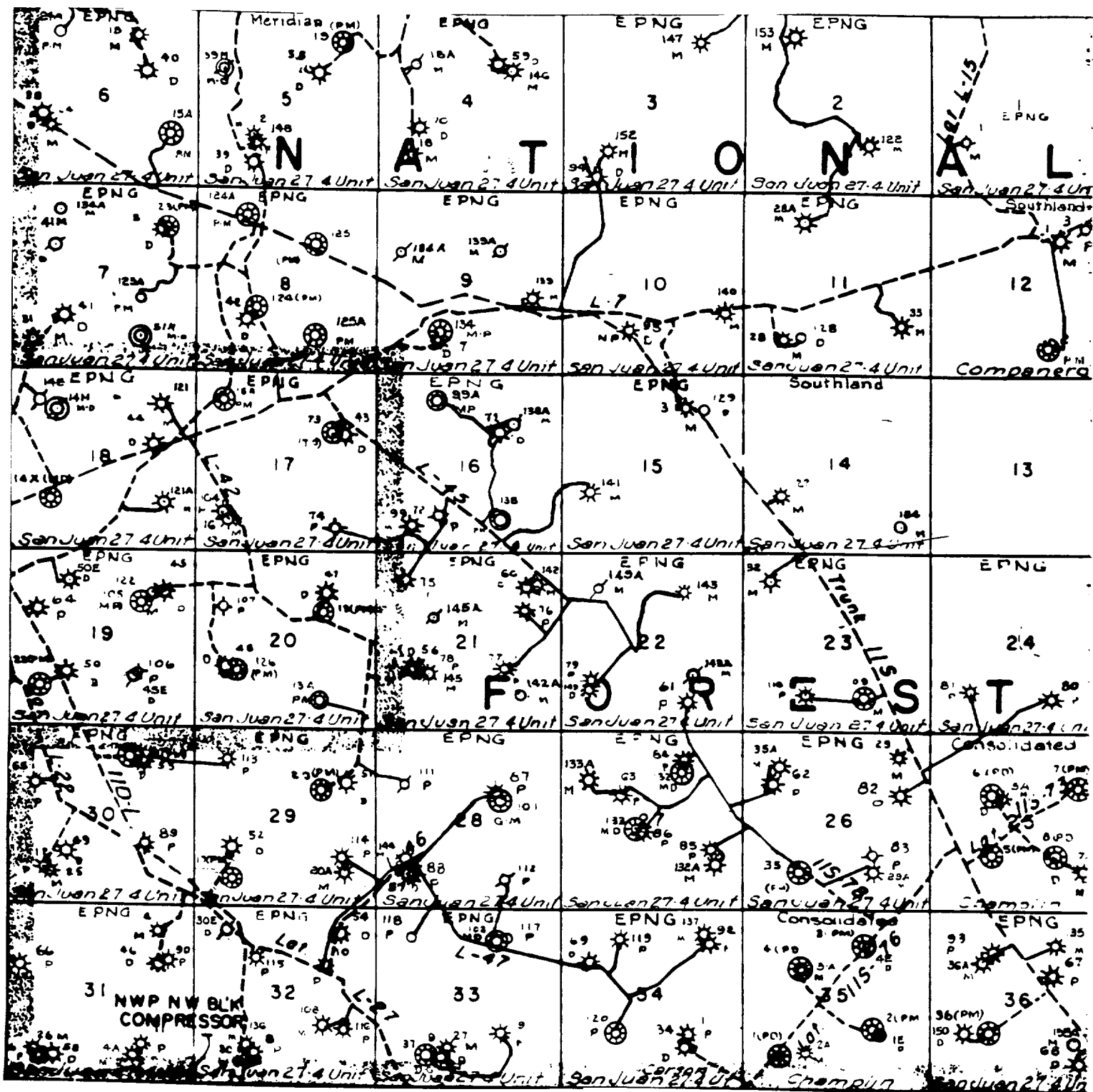
BURLINGTON RESOURCES

San Juan 27-4 Unit #53M
Multi-Point Surface Use Plan

1. Existing Roads - Refer to Map No. 1. Existing roads used to access the proposed location will be properly maintained for the duration of the project. Bureau of Land Management right-of-way has been applied for as shown on Map No. 1.
2. Planned Access Road - Refer to Map No. 1. None required.
3. Location of Existing Wells - Refer to Map No. 1A.
4. Location of Existing and/or Proposed Facilities if Well is Productive -
 - a. On the Well Pad - Refer to Plat No. 1, anticipated production facilities plat.
 - b. Off the Well Pad - Anticipated pipeline facilities as shown on the attached plat from Williams Field Service.
5. Location and Type of Water Supply - Water will be hauled by truck for the proposed project and will be obtained from Companero Water Hole located SE Section 18, T-27-N, R-4-W, New Mexico.
6. Source of Construction Materials - If construction materials are required for the proposed project, such materials will be obtained from a commercial quarry.
7. Methods of Handling Waste Materials - All garbage and trash materials will be removed from the site for proper disposal. A portable toilet will be provided for human waste and serviced in a proper manner. If liquids are left in the reserve pit after completion of the project, the pit will be fenced until the liquids have had adequate time to dry. The location clean-up will not take place until such time as the reserve pit can be properly covered over to prevent run-off from carrying waste materials into the watershed. Reserve pits will be lined as needed with either 12 mil bio-degradable plastic liner or a bentonite liner. All earthen pits will be so constructed as to prevent leakage from occurring; no earthen pit will be located on natural drainage. Generation of hazardous waste is not anticipated. Federal regulations will be adhered to regarding handling and disposal of such waste if so generated.
8. Ancillary Facilities - None anticipated.
9. Wellsite Layout - Refer to the location diagram and to the wellsite cut and fill diagram (Figure No. 4). The blow pit will be constructed with a 2'/160' grade to allow positive drainage to the reserve pit and prevent standing liquids in the blow pit.

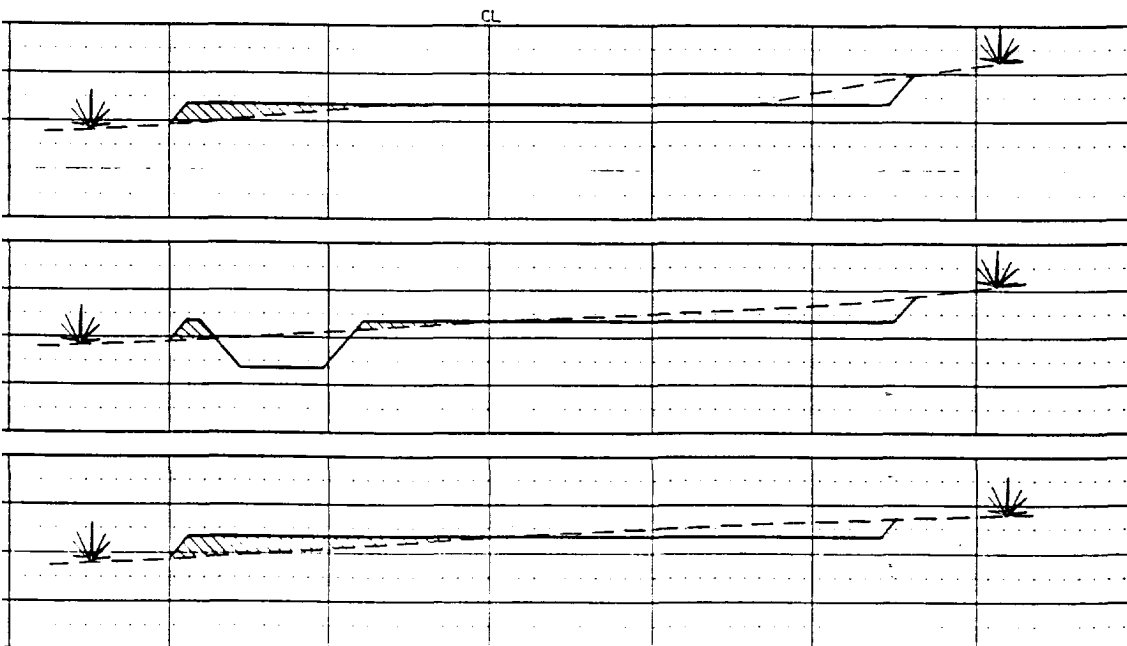
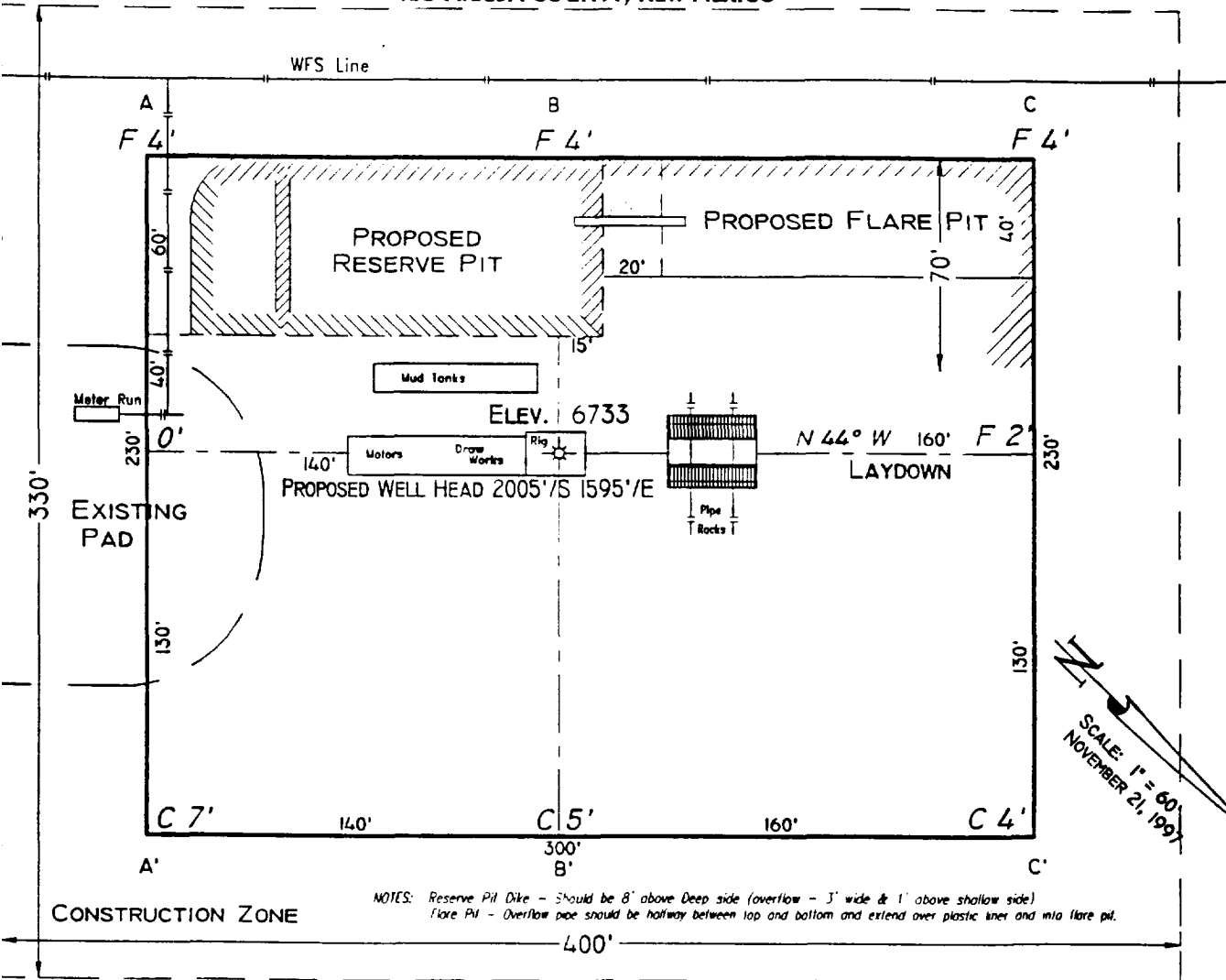
10. Plans for Restoration of the Surface - After completion of the proposed project, the location will be cleaned and leveled. The location will be left in such a condition that will enable reseeding operations to be carried out. Seed mixture as designated by the responsible government agency will be used. The reseeding operations will be performed during the time period set forth by the responsible government agency. The permanent location facilities will be painted as designated by the responsible government agency.
11. Surface Ownership - Carson National Forest
12. Other Information - Environmental stipulations as outlined by the responsible government agency will be adhered to. Refer to the archaeological report for a description of the topography, flora, fauna, soil characteristics, dwellings, historical and cultural sites.
13. Operator's Representative and Certification - Burlington Resources Oil & Gas Company Regional Drilling Manager, Post Office Box 4289, Farmington, NM 87499, telephone (505) 326-9700. I hereby certify that I, or persons under my direct supervision, have inspected the proposed drill site and access route; that I am familiar with the conditions which presently exist; that the statements made in this plan, are to the best of my knowledge, true and correct; and that the work associated with the operations proposed herein will be performed by Burlington Resources Oil and Gas Company and its contractors and subcontractors in conformity with this plan and the terms and conditions under which it is approved.


Regulatory/Compliance Administrator 2/12/98
Date



MERIDIAN OIL INC.
 Pipeline Map
 T-27-N, R-04-W
 Rio Arriba County, New Mexico
 San Juan 27-4 Unit #53M
 Map 1A

PAD LAYOUT PLAN & PROFILE
BURLINGTON RESOURCES OIL & GAS COMPANY
SAN JUAN 27-4 UNIT 53M
 2005' F/SL 1595' F/EL
 SEC. 30, T27N, R4W, N.M.P.M.
 RIO ARriba COUNTY, NEW MEXICO



SCALE: 1"=60'-HORIZ.
 1"=40'-VERT.

NOTE: Contractor sh
 call One-Call for loca
 of any marked or unma
 buried pipelines or cable
 well pad and/or access
 at least two (2) working
 prior to construction.

VANN SURVE
 304 N. Loc.
 Farmington,

BURLINGTON RESOURCES OIL AND GAS COMPANY

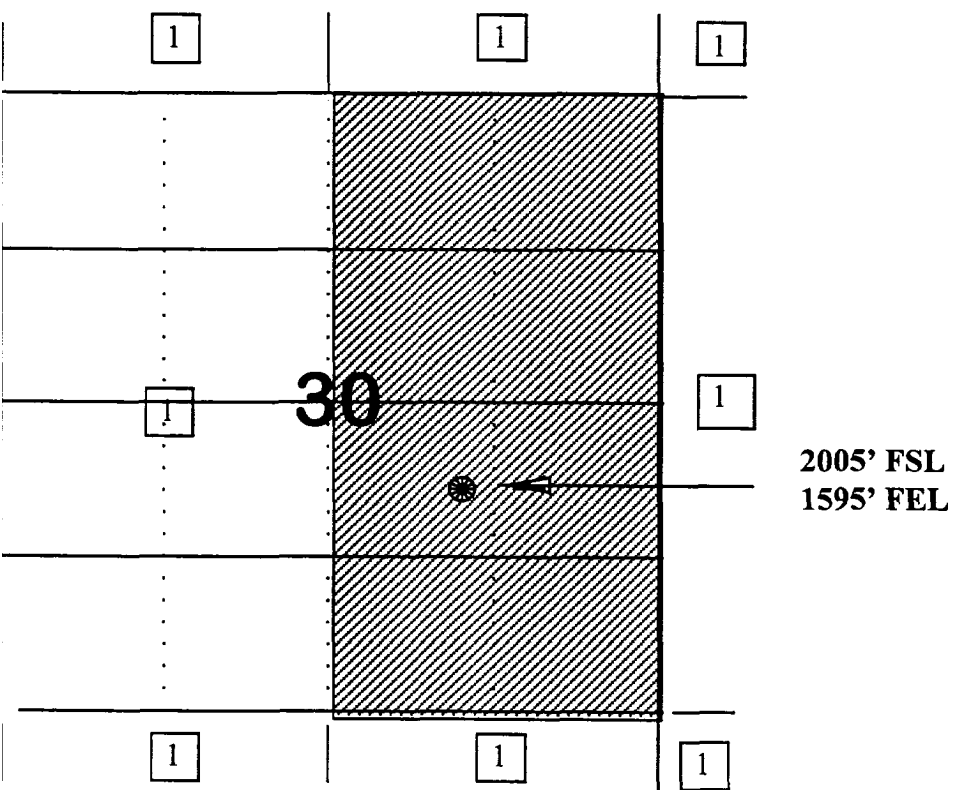
San Juan 27-4 Unit #53M

OFFSET OPERATOR/OWNER PLAT

Non Standard Location

Desaverde / Dakota Formations Well

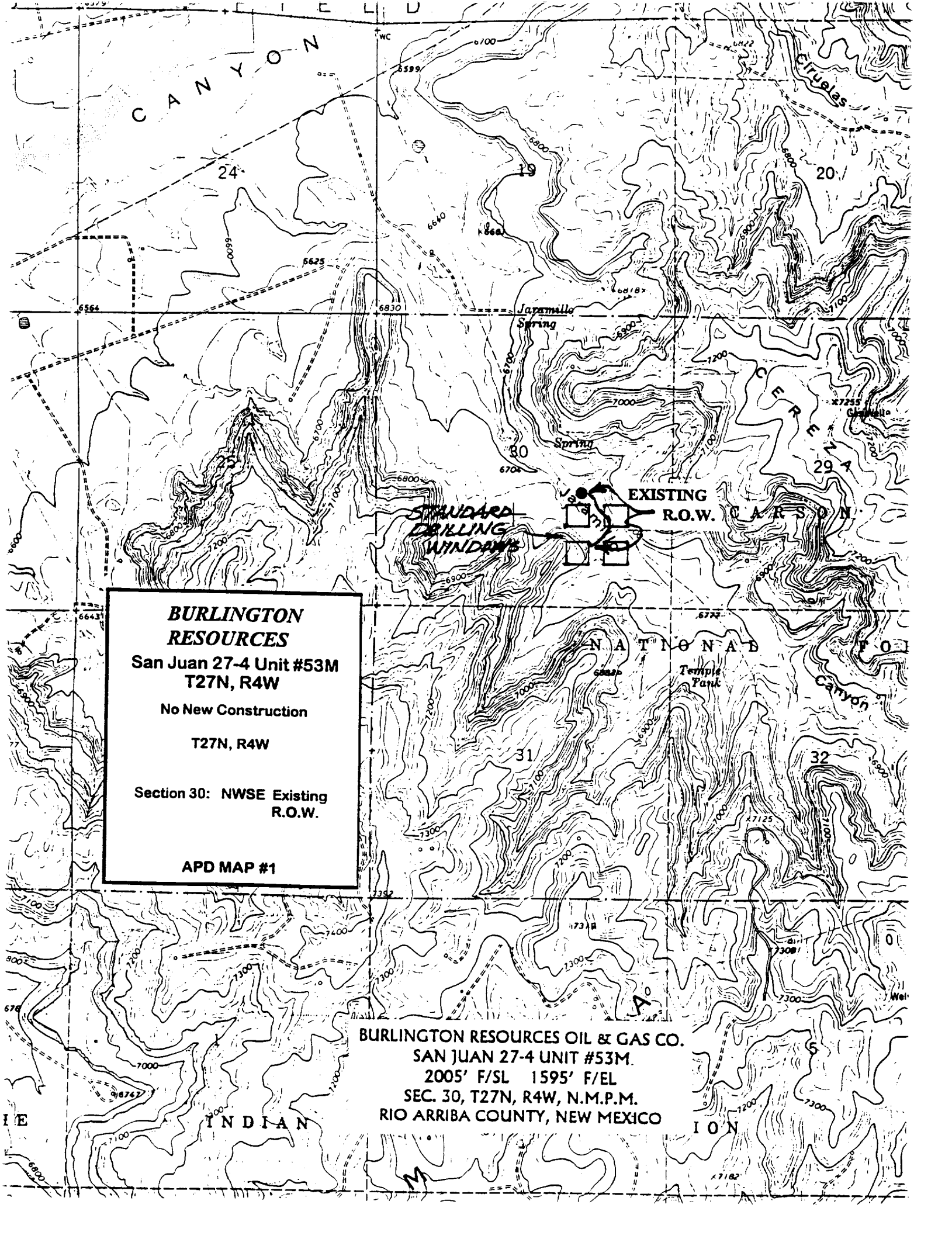
Township 27 North, Range 4 West



1) Burlington Resources

**BURLINGTON
RESOURCES**
San Juan 27-4 Unit #53M
T27N, R4W
No New Construction
T27N, R4W
Section 30: NWSE Existing
R.O.W.
APD MAP #1

BURLINGTON RESOURCES OIL & GAS CO.
SAN JUAN 27-4 UNIT #53M.
2005' F/SL 1595' F/EL
SEC. 30, T27N, R4W, N.M.P.M.
RIO ARriba COUNTY, NEW MEXICO



CANYON

24

WC

6599

6700

19

6640

6660

6564

6830

Jaramillo
Spring

6618

6900

7000

Spring

6700

6700

EXISTIN
R.O

STANDARD
DRILLING
WINDOWS

**BURLINGTON
RESOURCES**

San Juan 27-4 Unit #53M
T27N, R4W

No New Construction

T27N, R4W

Section 30: NWSE Existing
R.O.W.

APD MAP #1

N A T N O

31

7300

7200

7352