

UNITED STATES
DEPARTMENT OF THE INTERIOR
BUREAU OF LAND MANAGEMENT

APPLICATION FOR PERMIT TO DRILL, DEEPEN, OR PLUG BACK

1a. Type of Work DRILL	5. Lease Number SF-079492B Unit Reporting Number	
1b. Type of Well GAS	6. If Indian, All. or Tribe	
2. Operator BURLINGTON RESOURCES Oil & Gas Company	7. Unit Agreement Name San Juan 27-5 Unit	
3. Address & Phone No. of Operator PO Box 4289, Farmington, NM 87499 (505) 326-9700	8. Farm or Lease Name San Juan 27-5 Unit 9. Well Number 116M	
4. Location of Well 1850' FNL, 1850' FWL, Latitude 36° 33.7, Longitude 107° 18.7	10. Field, Pool, Wildcat Blanco MV/Basin DK 11. Sec., Twn, Rge, Mer. (NMPM) F-24-27N-510 API # 30-035-26088	
14. Distance in Miles from Nearest Town 9 miles from Gobernador	12. County Rio Arriba	13. State NM
15. Distance from Proposed Location to Nearest Property or Lease Line 1850'	17. Acres Assigned to Well MV - 320 W/2 DK - 320 N/2	
16. Acres in Lease	18. Distance from Proposed Location to Nearest Well, Drig, Compl, or Applied for on this Lease 1200'	
19. Proposed Depth 7812'	20. Rotary or Cable Tools Rotary	
21. Elevations (DF, FT, GR, Etc.) 6559' GR	22. Approx. Date Work will Start DRILLING OPERATIONS AUTHORIZED ARE SUBJECT TO COMPLIANCE WITH ATTACHED "GENERAL REQUIREMENTS"	
23. Proposed Casing and Cementing Program See Operations Plan attached	24. Authorized by: <u>[Signature]</u> Regulatory/Compliance Administrator	
	Date <u>12-23-98</u>	

PERMIT NO. _____

APPROVAL DATE _____

APPROVED BY/S/ Duane W. Spencer

Team Lead, Petroleum Management
TITLE _____

DATE MAR 18 1999

Archaeological Report to be submitted

Threatened and Endangered Species Report to be submitted

NOTE: This format is issued in lieu of U.S. BLM Form 3160-3

Title 18 U.S.C. Section 1001, makes it a crime for any person knowingly and willfully to make to any department or agency of the United States any false, fictitious or fraudulent statements or presentations as to any matter within its jurisdiction.

NMOCD

District I
PO Box 1980, Hobbs, NM 88241-1980

District II
PO Drawer DD, Artesia, NM 88211-0719

District III
1000 Rio Brazos Rd., Aztec, NM 87410

District IV
PO Box 2088, Santa Fe, NM 87504-2088

State of New Mexico
Energy, Minerals & Natural Resources Department

Form C-102

Revised February 21, 1994

Instructions on back

Submit to Appropriate District Office

State Lease - 4 Copies

Fee Lease - 3 Copies

OIL CONSERVATION DIVISION

PO Box 2088

Santa Fe, NM 87504-2088

1998 JUL 28 10:13

☐ AMENDED REPORT

WELL LOCATION AND ACREAGE DEDICATION PLAT

¹ API Number 30-039- <i>56088</i>	² Pool Code 72319/71599	³ Pool Name Blanco Mesaverde/Basin Dakota
⁴ Property Code 7454	⁵ Property Name SAN JUAN 27-5 UNIT	⁶ Well Number 116M
⁷ GRID No. 14538	⁸ Operator Name BURLINGTON RESOURCES OIL & GAS COMPANY	⁹ Elevation 6559'

¹⁰ Surface Location

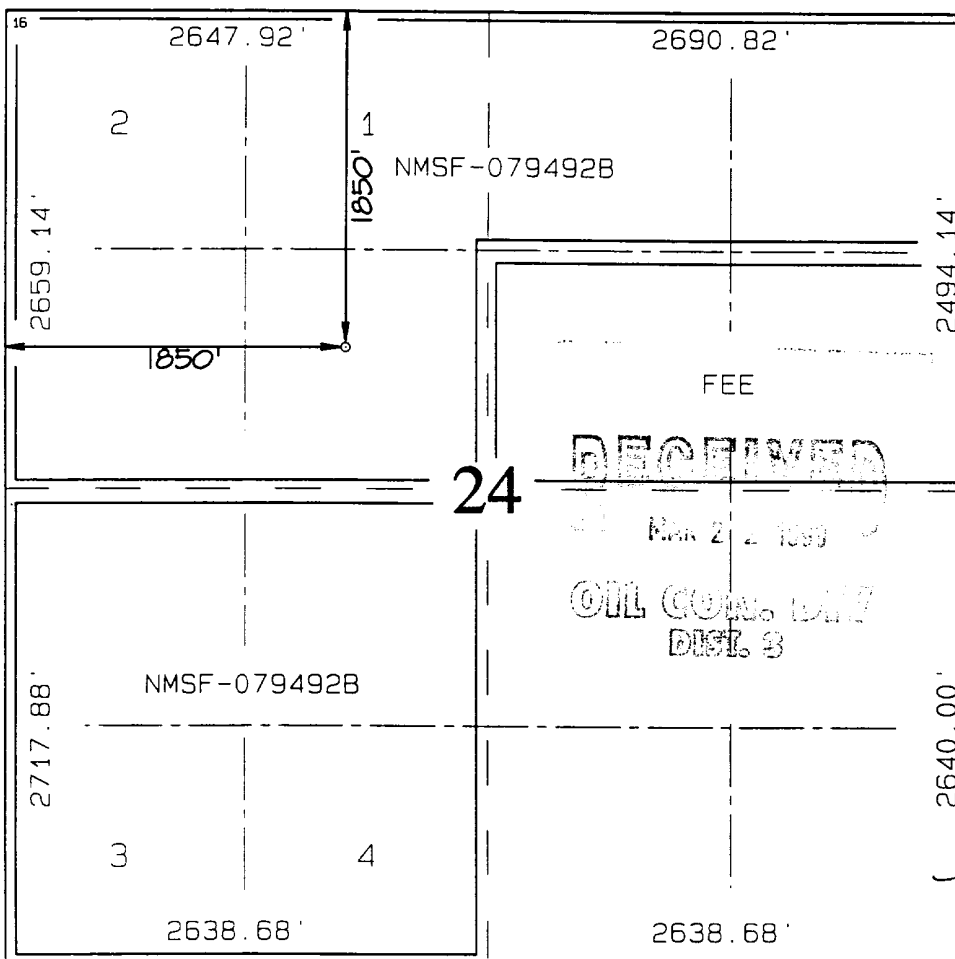
UL or lot no. F	Section 24	Township 27N	Range 5W	Lot Idn	Feet from the 1850	North/South line NORTH	Feet from the 1850	East/West line WEST	County RIO ARriba
--------------------	---------------	-----------------	-------------	---------	-----------------------	---------------------------	-----------------------	------------------------	----------------------

¹¹ Bottom Hole Location If Different From Surface

UL or lot no.	Section	Township	Range	Lot Idn	Feet from the	North/South line	Feet from the	East/West line	County
---------------	---------	----------	-------	---------	---------------	------------------	---------------	----------------	--------

¹² Dedicated Acres MV-W/320 DK-N/320	¹³ Joint or Infill	¹⁴ Consolidation Code	¹⁵ Order No.
---	-------------------------------	----------------------------------	-------------------------

NO ALLOWABLE WILL BE ASSIGNED TO THIS COMPLETION UNTIL ALL INTERESTS HAVE BEEN CONSOLIDATED OR A NON-STANDARD UNIT HAS BEEN APPROVED BY THE DIVISION



¹⁷ OPERATOR CERTIFICATION

I hereby certify that the information contained herein is true and complete to the best of my knowledge and belief

Signature

Peggy Bradfield

Printed Name

Regulatory Administrator

Title

Date

¹⁸ SURVEYOR CERTIFICATION

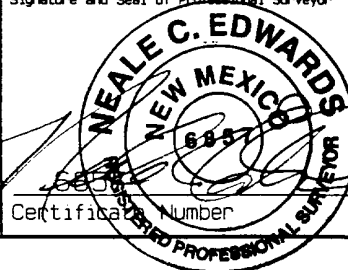
I hereby certify that the well location shown on this plat was plotted from field notes of actual surveys made by me or under my supervision, and that the same is true and correct to the best of my belief.

JULY 28, 1998

Date of Survey

Signature and Seal of Professional Surveyor

Certification Number



OPERATIONS PLAN

Well Name: San Juan 27-5 Unit #116M
Location: 1850' FNL, 1850' FWL, Sec 24, T-27-N, R-5-W
Rio Arriba County, NM
Latitude 36° 33.7, Longitude 107° 18.7
Formation: Blanco Mesa Verde/Basin Dakota
Elevation: 6559' GL

<u>Formation Tops:</u>	<u>Top</u>	<u>Bottom</u>	<u>Contents</u>
Surface	San Jose	2813'	
Ojo Alamo	2813'	2919'	aquifer
Kirtland	2919'	2995'	gas
Fruitland	2995'	3352'	gas
Pictured Cliffs	3352'	3455'	gas
Lewis	3455'	3876'	gas
Intermediate TD	3555'		
Mesa Verde	3876'	4339'	gas
Chacra	4339'	5051'	gas
Massive Cliff House	5051'	5203'	gas
Menefee	5203'	5537'	gas
Massive Point Lookout	5537'	6053'	gas
Mancos	6053'	6709'	gas
Gallup	6709'	7482'	gas
Greenhorn	7482'	7544'	gas
Graneros	7544'	7671'	gas
Dakota	7671'		gas
TD (4 1/2" liner)	7812'		

Logging Program:

Cased hole - CBL-CCL-GR - TD to surface

Mud Program:

<u>Interval</u>	<u>Type</u>	<u>Weight</u>	<u>Vis.</u>	<u>Fluid Loss</u>
0- 200'	Spud	8.4-9.0	40-50	no control
200- 3555'	LSND	8.4-9.0	30-60	no control
3555- 7812'	Gas	n/a	n/a	n/a

Pit levels will be visually monitored to detect gain or loss of fluid control.

Casing Program (as listed, the equivalent, or better):

<u>Hole Size</u>	<u>Depth Interval</u>	<u>Csg. Size</u>	<u>Wt.</u>	<u>Grade</u>
12 1/4"	0' - 200'	9 5/8"	32.3#	H-40
8 3/4"	0' - 3555'	7"	20.0#	J-55
6 1/4"	3455' - 7812'	4 1/2"	10.5#	K-55

Tubing Program:

0' - 7812' 2 3/8" 4.70# EUE

BURLINGTON RESOURCES OIL & GAS COMPANY SAN JUAN 27-5 UNIT #116M

1850' FNL & 1850' FWL, SECTION 24, T27N, R5W, N.M.P.M.
RIO ARriba COUNTY, NEW MEXICO

APD MAP #1

2500' NEW BLM CONSTRUCTION

300' NE/NE SECTION 24, T27N, R5W
1300' NW/NE SECTION 24, T27N, R5W
200' NE/NW SECTION 24, T27N, R5W
100' SE/NW SECTION 24, T27N, R5W

