

UNITED STATES
DEPARTMENT OF THE INTERIOR
BUREAU OF LAND MANAGEMENTSUBMIT IN TRIPLICATE*
(Other instructions on
reverse side)FORM APPROVED
OMB NO. 1004-0136
Expires: February 28, 1995

APPLICATION FOR PERMIT TO DRILL OR DEEPEN

| | | | |
|--|--|---|--|
| 1a. TYPE OF WORK DRILL <input checked="" type="checkbox"/> DEEPEN <input type="checkbox"/> | | 5. LEASE DESIGNATION AND SERIAL NO. SP080385 | |
| b. TYPE OF WELL OIL WELL <input type="checkbox"/> GAS WELL <input checked="" type="checkbox"/> OTHER <input type="checkbox"/> | | 6. IF INDIAN, ALLOTTEE OR TRIBE NAME | |
| 2. NAME OF OPERATOR Union Oil Company of California (Unocal) | | 7. UNIT AGREEMENT NAME Rincon | |
| 3. ADDRESS AND TELEPHONE NO. P. O. Box 671—Midland, TX 79702 (915) 685-7608 or (915) 685-7617 | | 8. FARM OR LEASE NAME, WELL NO. Rincon Unit #169M | |
| 4. LOCATION OF WELL (Report location clearly and in accordance with any State requirements.) At surface 1165' FSL & 1030' FEL At proposed prod. zone Same as surface | | 9. API WELL NO. n/a 30-039-26209 | |
| 14. DISTANCE IN MILES AND DIRECTION FROM NEAREST TOWN OR POST OFFICE* 40 miles southeast of Bloomfield, NM | | 10. FIELD AND POOL, OR WILDCAT Basin Dakota Blanco MV | |
| 15. DISTANCE FROM PROPOSED* LOCATION TO NEAREST PROPERTY OR LEASE LINE, FT. (Also to nearest crg. unit line, if any) 14,675' | | 11. SEC. T., R., M., OR BLK. AND SURVEY OR AREA P Sec. 26, T27N, R7W | |
| 16. NO. OF ACRES IN LEASE 2645.09 | | 12. COUNTY OR PARISH Rio Arriba | |
| 17. NO. OF ACRES ASSIGNED TO THIS WELL 1338.840K 180 E/340.56MV | | 13. STATE NM | |
| 18. DISTANCE FROM PROPOSED LOCATION* TO NEAREST WELL, DRILLING, COMPLETED, OR APPLIED FOR, ON THIS LEASE, FT. 2,458' | | 19. PROPOSED DEPTH 7611' | |
| 20. ROTARY OR CABLE TOOLS Rotary | | 21. APPROX. DATE WORK WILL START* 08/15/99 | |
| 21. ELEVATIONS (Show whether DF, RT, GR, etc.) 6696' GR | | 22. APPROX. DATE WORK WILL START* 08/15/99 | |

| PROPOSED CASING AND CEMENTING PROGRAM | | | | |
|---------------------------------------|-----------------------|-----------------|---------------|---|
| SIZE OF HOLE | GRADE, SIZE OF CASING | WEIGHT PER FOOT | SETTING DEPTH | QUANTITY OF CEMENT |
| 12 1/4" | H-40 9 5/8" | 32.3# | 350' | 220 sxs "B"—TOC @ surface |
| 7" | K-55 7" | 20# | 2400' | 234 sxs "B"—Cmt will be circ |
| 6 1/4" | K-55 4 1/2" | 11.6# | 7611' | 1st stg. 260 sxs "B"/2nd stg. 550 sxs "B" |

This section is subject to technical and procedural review pursuant to 43 CFR 3165.3 and appeal pursuant to 43 CFR 3165.4.

DRILLING OPERATIONS AUTHORIZED ARE SUBJECT TO COMPLIANCE WITH ATTACHED "GENERAL REQUIREMENTS"

Unocal plans to drill Rincon Unit #169M, complete in the Mesa Verde and the Basin Dakota and downhole commingle the two formations.

BOP—One double-gate BOP with 3 1/2" pipe and blind rams, one choke manifold with adjustable and positive chokes, an accumulator will hydraulically operate the BOP with 1 1/2 times the necessary capacity to close the rams and retain a minimum of 200 psi above recharge.

(Schematics of BOP attached)

IN ABOVE SPACE DESCRIBE PROGRAM: If proposal is to deepen, give data on present productive zone and proposed new productive zone. If proposal is to drill or deepen directionally, give pertinent data on subsurface locations and measured and true vertical depths. Give blowout preventer program, if any.

24. SIGNED [Signature] TITLE Permian Rocky Mountain Drilling Foreman DATE 07/06/99
(This space for Federal or State office use)

PERMIT NO. _____ APPROVAL DATE SEP 12 1999

Application approval does not warrant or certify that the applicant holds legal or equitable title to those rights in the subject lease which would entitle the applicant to conduct operations thereon. CONDITIONS OF APPROVAL, IF ANY:

APPROVED BY [Signature] TITLE Permian Rocky Mountain Drilling Foreman DATE SEP 12 1999

*See Instructions On Reverse Side

Title 18 U.S.C. Section 1001, makes it a crime for any person knowingly and willfully to make to any department or agency of the United States any false, fictitious or fraudulent statements or representations as to any matter within its jurisdiction.

NMOC

District I
PO Box 1980, Hobbs, NM 88241-1980
District II
PO Drawer DD, Artesia, NM 88211-0719
District III
1000 Rio Brazos Rd., Aztec, NM 87410
District IV
PO Box 2088, Santa Fe, NM 87504-2088

State of New Mexico
Energy, Minerals & Natural Resources Department

OIL CONSERVATION DIVISION

PO Box 2088
Santa Fe, NM 87504-2088

070 FARMINGTON, NM

Form C-102

Revised February 21, 1994

Instructions on back

Submit to Appropriate District Office

State Lease - 4 Copies

Fee Lease - 3 Copies

☐ AMENDED REPORT

WELL LOCATION AND ACREAGE DEDICATION PLAT

| | | |
|----------------------------------|---|----------------------------------|
| Alt Number 30039-26209 | Pool Code 71599 | Pool Name Basin Dakota |
| Property Code 011510 | Property Name RINCON UNIT | Well Number 169M |
| OCRID No. 023710 | Operator Name UNION OIL COMPANY OF CALIFORNIA | Elevation 6696 |

10 Surface Location

| UL or lot no. | Section | Township | Range | Lot Idn | Feet from the | North/South line | Feet from the | East/West line | County |
|---------------|---------|----------|-------|---------|---------------|------------------|---------------|----------------|------------|
| 16 | 26 | 27 N | 7 W | | 1165 | South | 1030 | East | Rio Arriba |

11 Bottom Hole Location If Different From Surface

| UL or lot no. | Section | Township | Range | Lot Idn | Feet from the | North/South line | Feet from the | East/West line | County |
|---------------|---------|----------|-------|---------|---------------|------------------|---------------|----------------|--------|
| | | | | | | | | | |

| | | | |
|--|--------------------|-----------------------|--------------|
| 12 Dedicated Acres 320.338.84 AK | 13 Joint or Infill | 14 Consolidation Code | 15 Order No. |
|--|--------------------|-----------------------|--------------|

NO ALLOWABLE WILL BE ASSIGNED TO THIS COMPLETION UNTIL ALL INTERESTS HAVE BEEN CONSOLIDATED
OR A NON-STANDARD UNIT HAS BEEN APPROVED BY THE DIVISION

| | | |
|--|--|---|
| BC S88°33'W | BC 79.92 CH. | 17 OPERATOR CERTIFICATION I hereby certify that the information contained herein is true and complete to the best of my knowledge and belief Signature Michael C. Phillips Printed Name Rocky Mt. Drilling Foreman Title June 22, 1999 Date |
| 4 3 RECEIVED SEP 8 1999 OIL CON. DIV. DIST. 3 SEC. | 2 1 85.68 CH. | |
| 5 6 7 | 8 | |
| BC N0°21'E | 26 12 11 10 9 13 14 15 16 1165' 1030' N0°25'E | 18 SURVEYOR CERTIFICATION I hereby certify that the well location shown on this plat was plotted from field notes of actual surveys made by me or under my supervision, and that the same is true and correct to the best of my belief Date of Survey Signature and Seal of Professional Surveyor William S. Mahake II Certificate Number 8466 |
| S89°43'W | BC 29.93 CH. | |

District I
PO Box 1980, Hobbs, NM 88241-1980
District II
PO Drawer DD, Artesia, NM 88211-0719
District III
1000 Rio Brazos Rd., Aztec, NM 87410
District IV
PO Box 2088, Santa Fe, NM 87504-2088

State of New Mexico
Energy, Minerals & Natural Resources Department

OIL CONSERVATION DIVISION
PO Box 2088
Santa Fe, NM 87504-2088

Form C-102

Revised February 21, 1994

Instructions on back

Submit to Appropriate District Office

State Lease - 4 Copies

Fee Lease - 3 Copies

☐ AMENDED REPORT

WELL LOCATION AND ACREAGE DEDICATION PLAT

| | | | | | |
|--------------------------------------|--|--|--|--|--|
| 1. AIT Number <u>30-039-26009</u> | | 2. Pool Code <u>72319</u> | | 3. Pool Name <u>Blanco Mesa Verde</u> | |
| 4. Property Code <u>011510</u> | | 5. Property Name <u>RINCON UNIT</u> | | 6. Well Number <u>169M</u> | |
| 7. OGRID No. <u>023710</u> | | 8. Operator Name <u>UNION OIL COMPANY OF CALIFORNIA</u> | | 9. Elevation <u>6696</u> | |

10. Surface Location

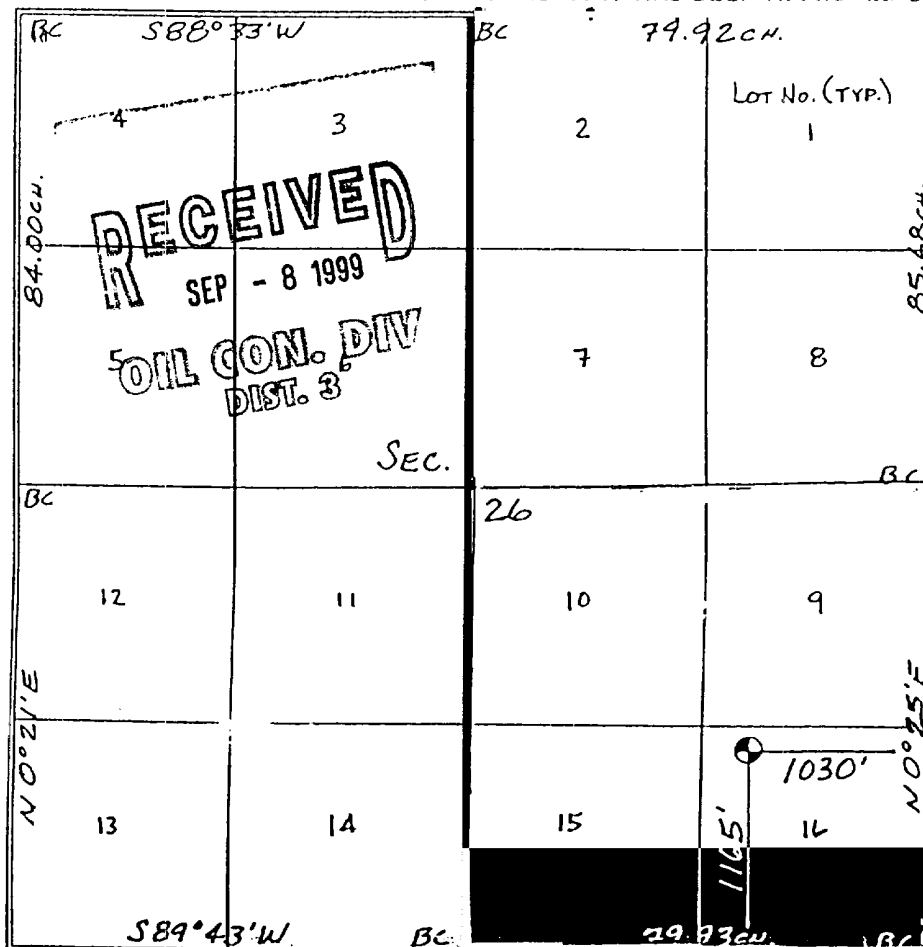
| UL or lot no. | Section | Township | Range | Lot Idn | Feet from the | North/South line | Feet from the | East/West line | County |
|---------------|---------|----------|-------|---------|---------------|------------------|---------------|----------------|------------|
| 16 | 26 | 27 N | 7 W | | 1165 | South | 1030 | East | Rio Arriba |

11. Bottom Hole Location If Different From Surface

| UL or lot no. | Section | Township | Range | Lot Idn | Feet from the | North/South line | Feet from the | East/West line | County |
|---------------|---------|----------|-------|---------|---------------|------------------|---------------|----------------|--------|
| | | | | | | | | | |

| | | | |
|---|---------------------|------------------------|---------------|
| 12. Dedicated Acres <u>320.340.56 AC</u> | 13. Joint or Infill | 14. Consolidation Code | 15. Order No. |
|---|---------------------|------------------------|---------------|

NO ALLOWABLE WILL BE ASSIGNED TO THIS COMPLETION UNTIL ALL INTERESTS HAVE BEEN CONSOLIDATED
OR A NON-STANDARD UNIT HAS BEEN APPROVED BY THE DIVISION



| | |
|--|-----------------------------------|
| 17. OPERATOR CERTIFICATION | |
| I hereby certify that the information contained herein is true and complete to the best of my knowledge and belief | |
| Signature | <u>Michael C. Phillips</u> |
| Printed Name | <u>Michael C. Phillips</u> |
| Title | <u>Rocky Mt. Drilling Foreman</u> |
| Date | <u>June 22, 1999</u> |

| | |
|--|-----------------------------|
| 18. SURVEYOR CERTIFICATION | |
| I hereby certify that the well location shown on this plat was plotted from field notes of actual surveys made by me or under my supervision, and that the same is true and correct to the best of my belief | |
| Date of Survey | <u>June 22, 1999</u> |
| Signature and Seal of Professional Surveyor | <u>William S. Mahake II</u> |
| Certificate Number | <u>8466</u> |

New Mexico Oil Conservation Division

UNION OIL COMPANY OF CALIFORNIA
RINCON UNIT #172H 16 9 M
1165' FSL & 1030' FSL
Sec. 26, T27N, R7W, NMPM
Rio Arriba Co., NM