

District I
 PO Box 1980, Hobbs, NM 88241-1980
 District II
 811 South First, Artesia, NM 88210
 District III
 1000 Rio Brazos Rd., Aztec, NM 87410
 District IV
 2040 South Pacheco, Santa Fe, NM 87505

State of New Mexico
 Energy, Minerals & Natural Resources Department

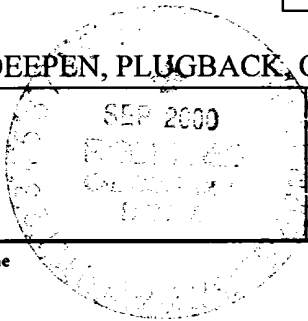
OIL CONSERVATION DIVISION
 2040 South Pacheco
 Santa Fe, NM 87505

Form C-101
 Revised October 18, 1994
 Instructions on back
 Submit to Appropriate District Office
 State Lease - 6 Copies
 Fee Lease - 5 Copies

AMENDED REPORT

APPLICATION FOR PERMIT TO DRILL, RE-ENTER, DEEPEN, PLUGBACK, OR ADD A ZONE

| | | |
|--|--|---|
| ¹ Operator Name and Address. Burlington Resources Oil & Gas Company PO Box 4289, Farmington, NM 87499 | | ² OGRID Number 14538 |
| | | ³ API Number 30-039-26517 |
| ⁴ Property Code 7454 | ⁵ Property Name San Juan 27-5 Unit | ⁶ Well No. 189M |



⁷ Surface Location

| UL or lot no. | Section | Township | Range | Lot Idn | Feet from the | North/South line | Feet from the | East/West line | County |
|---------------|---------|----------|-------|---------|---------------|------------------|---------------|----------------|------------|
| J | 32 | 27N | 5W | | 1630' | South | 2050' | East | Rio Arriba |

⁸ Proposed Bottom Hole Location If Different From Surface

| UL or lot no. | Section | Township | Range | Lot Idn | Feet from the | North/South line | Feet from the | East/West line | County |
|--|---------|----------|-------|---------|---|------------------|---------------|----------------|--------|
| ⁹ Proposed Pool 1 Blanco Mesaverde | | | | | ¹⁰ Proposed Pool 2 Basin Dakota | | | | |

| | | | | |
|-----------------------------------|---------------------------------------|---|------------------------------------|--|
| ¹¹ Work Type Code N | ¹² Well Type Code G | ¹³ Cable/Rotary Rotary | ¹⁴ Lease Type Code S | ¹⁵ Ground Level Elevation 6560' GR |
| ¹⁶ Multiple Y | ¹⁷ Proposed Depth 7682' | ¹⁸ Formation Mesaverde/Dakota | ¹⁹ Contractor N/a | ²⁰ Spud Date N/a |

²¹ Proposed Casing and Cement Program

| Hole Size | Casing Size | Casing weight/foot | Setting Depth | Sacks of Cement | Estimated TOC |
|-----------|-------------|--------------------|---------------|-----------------|---------------|
| 12 1/4" | 9 5/8" | 32.3# | 200' | 118 cu.ft. | Surface |
| 8 3/4" | 7" | 20# | 3422' | 1029 cu.ft. | Surface |
| 6 1/4" | 4 1/2" | 10.5# | 3322-7682' | 627 cu.ft. | Top of liner |

²² Describe the proposed program. If this application is to DEEPEN or PLUG BACK give the data on the present productive zone and proposed new productive zone. Describe the blowout prevention program, if any. Use additional sheets if necessary.

11" 3000 psi minimum double gate BOP
 Note: to facilitate higher hydraulic stimulation completion work, no liner hanger will be used. In its place, a long string of 4 1/2" casing will be run and cemented with a minimum of 100' of cement overlap between the 4 1/2" and 7" casing strings. After completion of the well, a 4 1/2" retrievable bridge plug will be set below the top of cement in the 4 1/2" x 7" overlap. The 4 1/2" casing will then be backed off above the top of cement in the 4 1/2" x 7" overlap and laid down. The 4 1/2" bridge plug will then be retrieved and the production tubing will be run to produce the well.

²³ I hereby certify that the information given above is true and complete to the best of my knowledge and belief.

Signature: *Peggy Cole*
 Printed name: Peggy Cole
 Title: Regulatory/Compliance Supervisor
 Date: 9-11-00
 Phone: 505-326-9700

| | |
|--|-----------------------------------|
| OIL CONSERVATION DIVISION | |
| Approved by: <i>[Signature]</i> | Title: DEPUTY OIL & GAS INSPECTOR |
| Approval Date: SEP 12 2000 | Expiration Date: SEP 12 2000 |
| Conditions of Approval: Attached <input type="checkbox"/> | |

District I
PO Box 1980, Hobbs, NM 88241-1980

State of New Mexico
Energy, Minerals & Natural Resources Department

Form C-102
Revised February 21, 1994

District II
PO Drawer DD, Artesia, NM 88211-0719

OIL CONSERVATION DIVISION
PO Box 2088
Santa Fe, NM 87504-2088

Submit to Appropriate District Office
State Lease - 4 Copies
Fee Lease - 3 Copies

District III
1000 Rio Brazos Rd., Aztec, NM 87410

AMENDED REPORT

District IV
PO Box 2088, Santa Fe, NM 87504-2088

WELL LOCATION AND ACREAGE DEDICATION PLAT

| | | | |
|-----------------------------|--|---------------------------|---|
| *API Number 30-039-26517 | | *Pool Code 72319/71599 | *Pool Name Blanco Mesaverde/Basin Dakota |
| *Property Code 7454 | *Property Name SAN JUAN 27-5 UNIT | | *Well Number 189M |
| *GRID No. 14538 | *Operator Name BURLINGTON RESOURCES OIL & GAS COMPANY | | *Elevation 6560 |

¹⁰ Surface Location

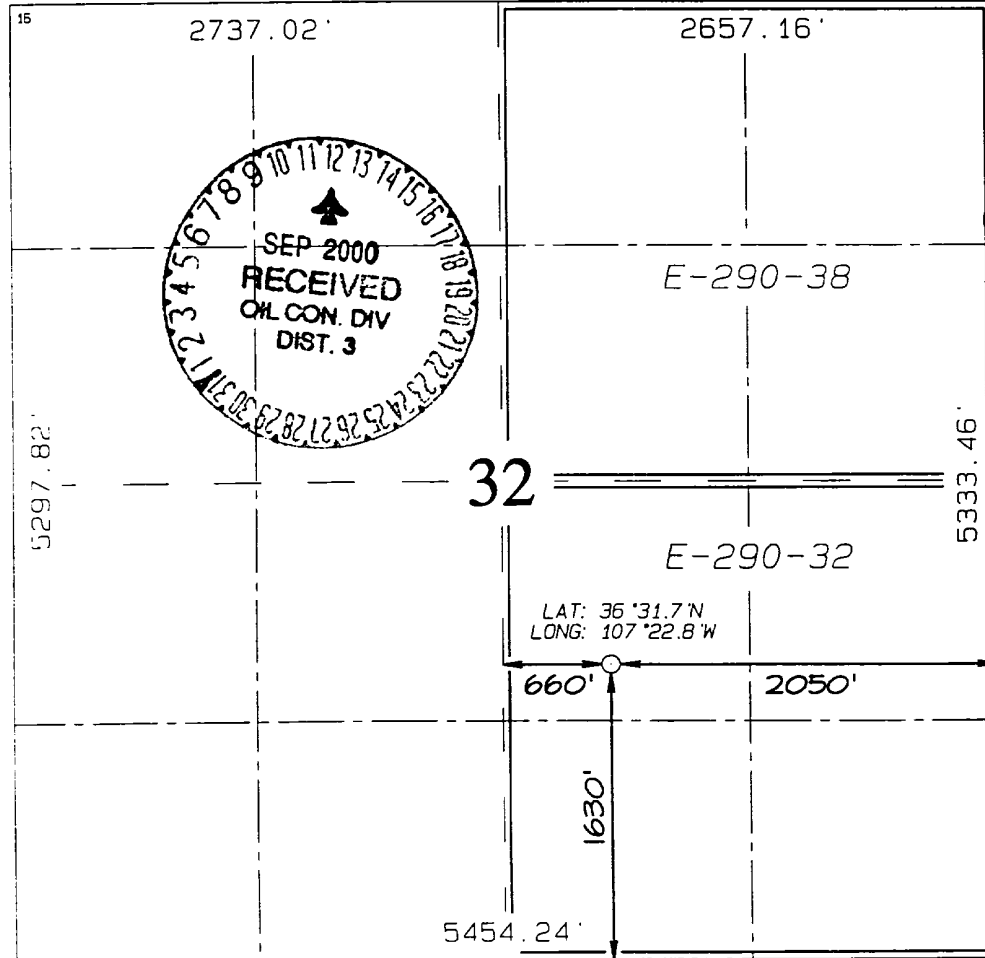
| U. or lot no. | Section | Township | Range | Lot Idn | Feet from the | North/South line | Feet from the | East/West line | County |
|---------------|---------|----------|-------|---------|---------------|------------------|---------------|----------------|------------|
| J | 32 | 27N | 5W | | 1630 | SOUTH | 2050 | EAST | RIO ARriba |

¹¹ Bottom Hole Location If Different From Surface

| U. or lot no. | Section | Township | Range | Lot Idn | Feet from the | North/South line | Feet from the | East/West line | County |
|---------------|---------|----------|-------|---------|---------------|------------------|---------------|----------------|--------|
| | | | | | | | | | |

| | | | |
|--|-------------------------------|----------------------------------|-------------------------|
| ¹² Dedicated Acres E/320 | ¹³ Joint or Infill | ¹⁴ Consolidation Code | ¹⁵ Order No. |
|--|-------------------------------|----------------------------------|-------------------------|

NO ALLOWABLE WILL BE ASSIGNED TO THIS COMPLETION UNTIL ALL INTERESTS HAVE BEEN CONSOLIDATED OR A NON-STANDARD UNIT HAS BEEN APPROVED BY THE DIVISION



¹⁷ OPERATOR CERTIFICATION
I hereby certify that the information contained herein is true and complete to the best of my knowledge and belief.

Peggy Cole
Signature
Peggy Cole
Printed Name
Regulatory Supervisor
Title
Date

¹⁸ SURVEYOR CERTIFICATION
I hereby certify that the well location shown on this plat was plotted from field notes of actual surveys made by me or under my supervision, and that the same is true and correct to the best of my belief.

AUGUST 17, 2000
Date of Survey
Signature and Seal
Neale G. Edwards
NEALE G. EDWARDS
NEW MEXICO
6857
Certificate No. 6857