

UNITED STATES
DEPARTMENT OF THE INTERIOR
BUREAU OF LAND MANAGEMENT

APPLICATION FOR PERMIT TO DRILL, DEEPEN, OR PLUG BACK

| | |
|---|---|
| 1a. Type of Work DRILL | 5. Lease Number SF-079393 Unit Reporting Number <u>891000950B</u> |
| 1b. Type of Well GAS | 6. If Indian, All. or Tribe |
| 2. Operator BURLINGTON RESOURCES Oil & Gas Company | 7. Unit Agreement Name San Juan 27-5 Unit |
| 3. Address & Phone No. of Operator PO Box 4289, Farmington, NM 87499 (505) 326-9700 | 8. Farm or Lease Name San Juan 27-5 Unit 9. Well Number 148R |
| 4. Location of Well 1830' FNL, 895' FWL Latitude 36° 36.3, Longitude 107° 24.4 | 10. Field, Pool, Wildcat So. Blanco Pict. Cliffs 11. Sec., Twn, Rge, Mer. (NMPM) E Sec. 6, T-27-N, R-5-W API # 30-039-26524 |
| 14. Distance in Miles from Nearest Town 8 miles from Gobernador | 12. County Rio Arriba 13. State NM |
| 15. Distance from Proposed Location to Nearest Property or Lease Line 895' | 17. Acres Assigned to Well 342.38 173.72 NW |
| 16. Acres in Lease | |
| 18. Distance from Proposed Location to Nearest Well, Drlg, Compl, or Applied for on this Lease 75' | |
| 19. Proposed Depth 3487' | 20. Rotary or Cable Tools Rotary |
| 21. Elevations (DF, FT, GR, Etc.) 6509' GR | 22. Approx. Date Work will Start |
| 23. Proposed Casing and Cementing Program See Operations Plan attached | DRILLING OPERATIONS AUTHORIZED ARE SUBJECT TO COMPLIANCE WITH ATTACHED "GENERAL REQUIREMENTS" |
| 24. Authorized by: <u><i>Regina C. Allen</i></u> Regulatory/Compliance Supervisor | <u>10-6-00</u> Date |

PERMIT NO. _____

APPROVAL DATE _____

APPROVED BY *m/ Jim Lovato*

TITLE _____

DATE DEC - 7

Archaeological Report to be submitted

Threatened and Endangered Species Report to be submitted

NOTE: This format is issued in lieu of U.S. BLM Form 3160-3

Title 18 U.S.C. Section 1001, makes it a crime for any person knowingly and willfully to make to any department or agency of the United States any false, fictitious or fraudulent statements or presentations as to any matter within its jurisdiction.

District I
PO Box 1980, Hobbs, NM 83241-1980

District II
PO Drawer DD, Artesia, NM 88211-0719

District III
1000 Rio Brazos Rd., Aztec, NM 87410

District IV
PO Box 2088, Santa Fe, NM 87504-2088

State of New Mexico
Energy, Minerals & Natural Resources Department

OIL CONSERVATION DIVISION
PO Box 2088
Santa Fe, NM 87504-2088

Form C-102
Revised February 21, 1994
Instructions on back
Submit to Appropriate District Office
State Lease - 4 Copies
Fee Lease - 3 Copies

☐ AMENDED REPORT

WELL LOCATION AND ACREAGE DEDICATION PLAT

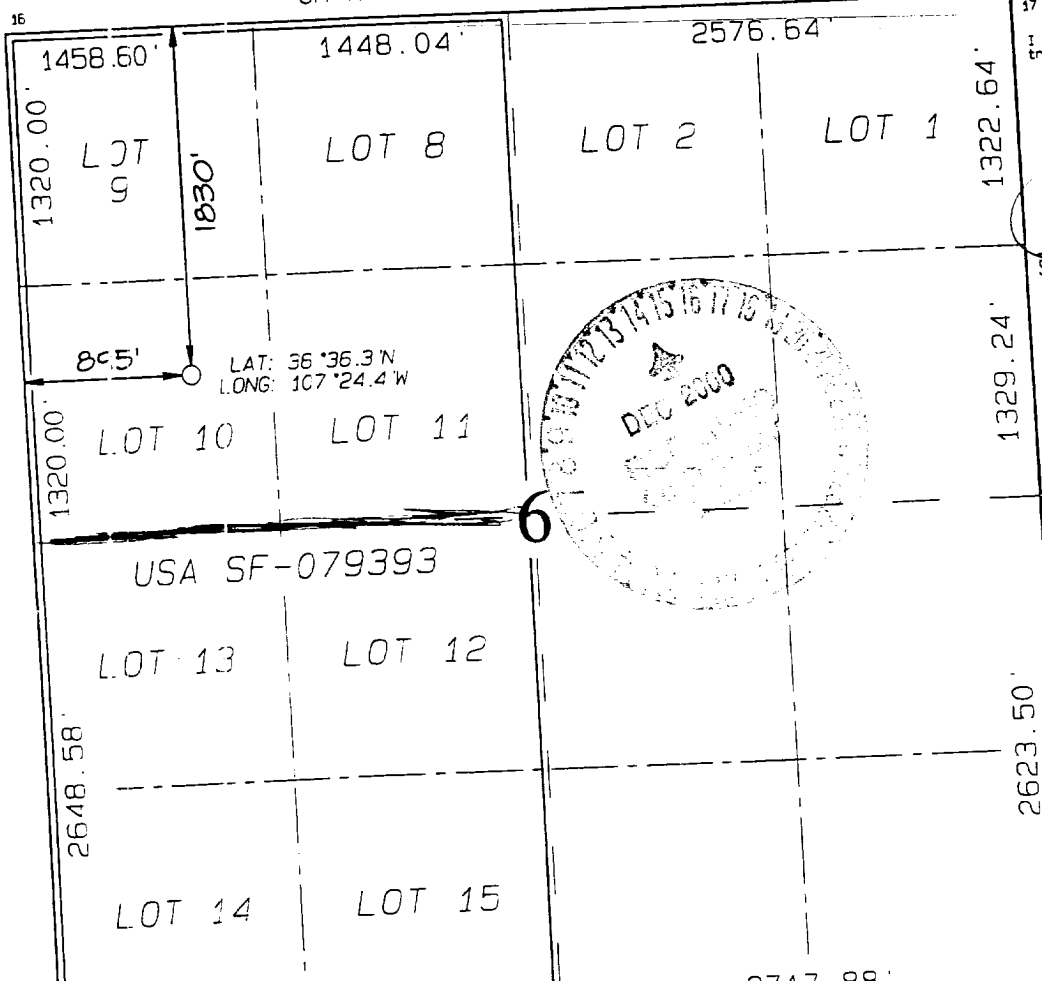
| | | | |
|----------------------------|---|--------------------|---|
| API Number 30-039-26524 | | Pool Code 72439 | Pool Name South Blanco Pictured Cliffs |
| Property Code 7454 | Property Name SAN JUAN 27-5 UNIT | | Well Number 148R |
| OGRIC No. 14538 | Operator Name BURLINGTON RESOURCES OIL & GAS COMPANY | | Elevation 6509 |

| 10 Surface Location | | | | | | | | | |
|---------------------|---------|----------|-------|---------|---------------|------------------|---------------|----------------|------------|
| UL or lot no. | Section | Township | Range | Lot Idn | Feet from the | North/South line | Feet from the | East/West line | County |
| E | 6 | 27N | 5W | | 1830 | NORTH | 895 | WEST | RIO ARriba |

| 11 Bottom Hole Location If Different From Surface | | | | | | | | | |
|---|---------|----------|-------|---------|---------------|------------------|---------------|----------------|--------|
| UL or lot no. | Section | Township | Range | Lot Idn | Feet from the | North/South line | Feet from the | East/West line | County |
| | | | | | | | | | |

| | | | |
|---------------------------------|--------------------|-----------------------|--|
| 12 Dedicated Acres 173.72 NW | 13 Joint or Infill | 14 Consolidation Code | 15 Order No. 160 acres for density purposes for the Pictured Cliffs 320 acres for revenue purposes for the Pictured Cliffs |
|---------------------------------|--------------------|-----------------------|--|

NO ALLOWABLE WILL BE ASSIGNED TO THIS COMPLETION UNTIL ALL INTERESTS HAVE BEEN CONSOLIDATED
OR A NON-STANDARD UNIT HAS BEEN APPROVED BY THE DIVISION



17 OPERATOR CERTIFICATION

I hereby certify that the information contained herein is true and complete to the best of my knowledge and belief.

Peggy Cole
Signature

Peggy Cole
Printed Name
Regulatory Supervisor
Title

10-6-00
Date

18 SURVEYOR CERTIFICATION

I hereby certify that the well location shown on this plat was plotted from field notes of actual surveys made by me or under my supervision, and that the same is true and correct to the best of my belief.

AUGUST 17, 2000
Date of Survey

Signature and Seal of Registered Surveyor

NEALE G. EDWARDS
NEW MEXICO
6857
Professional Surveyor

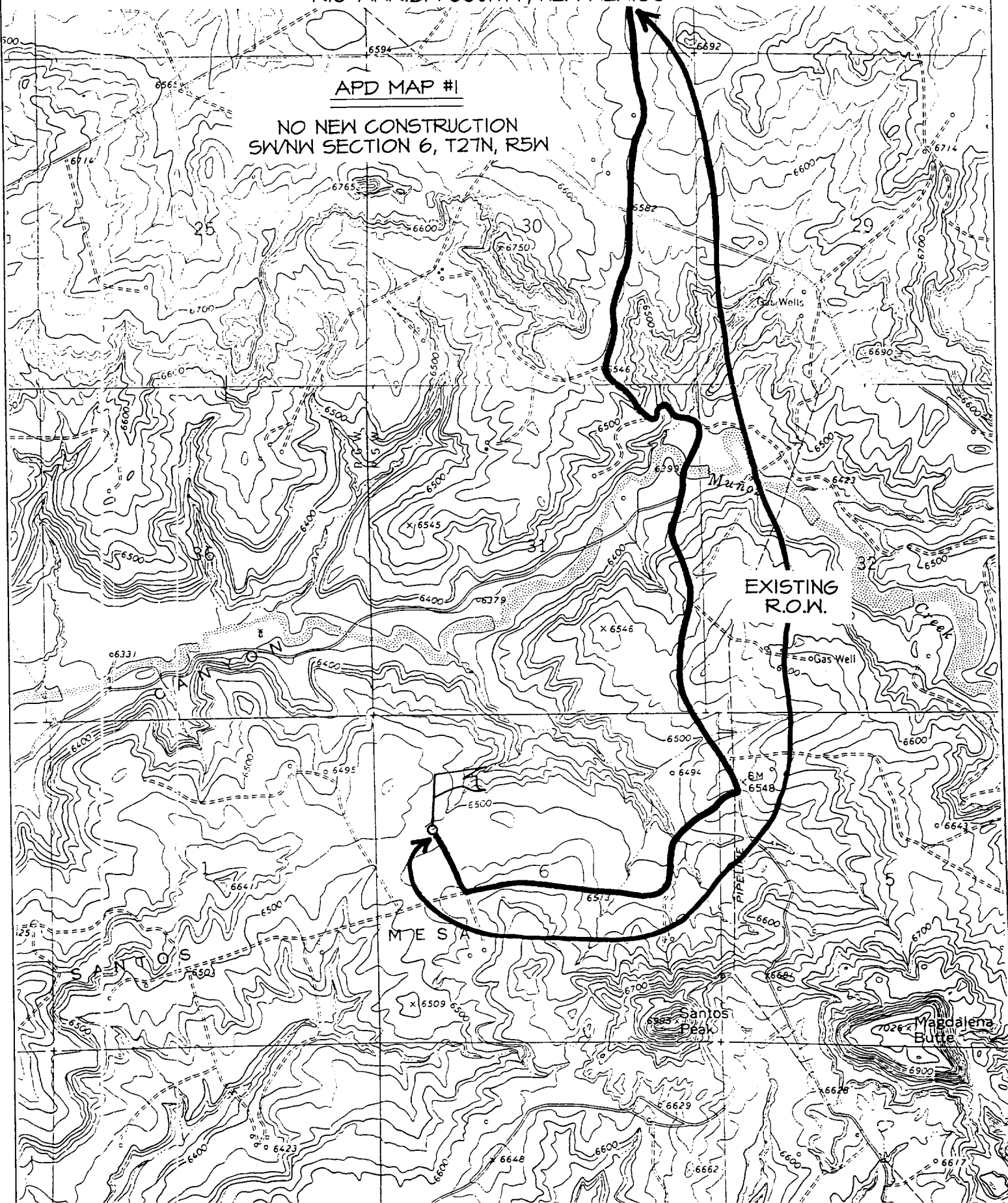
Certificate 6857

BURLINGTON RESOURCES OIL & GAS COMPANY SAN JUAN 27-5 UNIT #148R

1830' FNL & 895' FWL, SECTION 6, T27N, R5W, N.M.P.M.
RIO ARRIBA COUNTY, NEW MEXICO

APD MAP #1

NO NEW CONSTRUCTION
SW/NW SECTION 6, T27N, R5W



OPERATIONS PLAN

Well Name: San Juan 27-5 Unit #148R
Location: 1830' FNL, 895' FWL, Section 6, T-27-N, R-5-W
Rio Arriba County, New Mexico
Latitude 36° 36.3, Longitude 107° 24.4
Formation: South Blanco Pictured Cliffs
Elevation: 6509' GL

| Formation: | Top | Bottom | Contents |
|-------------------|------------|---------------|-----------------|
| Surface | San Jose | 2586' | |
| Ojo Alamo | 2586' | 2744' | aquifer |
| Kirtland | 2744' | 2871' | gas |
| Fruitland | 2871' | 3287' | gas |
| Pictured Cliffs | 3287' | | gas |
| Total Depth | 3487' | | |

Logging Program: Surface to TD - CBL-CCL-GR

Coring Program: None

Mud Program:

| <u>Interval</u> | <u>Type</u> | <u>Weight</u> | <u>Vis.</u> | <u>Fluid Loss</u> |
|-----------------|-------------|---------------|-------------|-------------------|
| 0- 200' | Spud | 8.4-9.0 | 40-50 | no control |
| 200-3487' | FW | 8.4-9.0 | 32-45 | no control |

Casing Program (as listed, equivalent, or better):

| <u>Hole Size</u> | <u>Depth Interval</u> | <u>Csq. Size</u> | <u>Wt.</u> | <u>Grade</u> |
|------------------|-----------------------|------------------|------------|--------------|
| 8 3/4" | 0 - 200' | 7" | 20.0# | J-55 |
| 6 1/4" | 0 - 3487' | 2 7/8" | 6.5# | J-55 |

Float Equipment: 7" surface casing - saw tooth guide shoe.
Centralizers will be run in accordance with Onshore Order #2.

2 7/8" production casing - float shoe on bottom. Three centralizers run every other joint above shoe. Seven centralizers run every 3rd joint to the base of the Ojo Alamo @ 2744'. Two turbolizing type centralizers - one below and one into the base of the Ojo Alamo @ 2744'. Standard centralizers thereafter every fourth joint up to the base of the surface pipe.

Wellhead Equipment: 7" x 2 7/8" 2000 psi screw on independent wellhead.

Cementing:

7" surface casing - cement with 76 sx Class "B" cement with 1/4# flocele/sx and 3% calcium chloride (90 cu.ft. of slurry, 200% excess to circulate to surface). WOC 8 hrs. Test casing to 600 psi for 30 minutes.

San Juan 27-5 Unit #148R

2 7/8" production casing - Lead w/361 sx Class "B" w/3% sodium metasilicate, 1/2 pps Flocele and 10 pps gilsonite. Tail w/90 sx 50/50 Class "B" Poz w/2% gel, 1/4 pps Flocele, 5 pps gilsonite and 2% calcium chloride (1172 cu.ft. of slurry, 100% excess to circulate to surface). WOC 8 hrs. If cement does not circulate to surface, a CBL will be run during completion to determine TOC.

BOP and tests:

Surface to TD - 11" 2000 psi (minimum double gate BOP stack (Reference Figure #1 and #2). Prior to drilling out surface casing, test rams to 600 psi/30 min.

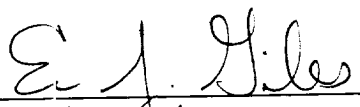
Completion - 6" 2000 psi (minimum) double gate BOP stack (Reference Figure #2). Prior to completion operations, test rams and casing to 2000 psi/15 min.

From surface to TD - choke manifold (Reference Figure #3).

Pipe rams will be actuated to least once each day and blind rams actuated once each trip to test proper functioning. An upper kelly cock valve with handle and drill string safety valves to fit each drill string will be maintained and available on the rig floor.

Additional information:

- * The Pictured Cliffs formation will be completed.
- * Anticipated pore pressure for the Pictured Cliffs is 500 psi.
- * This gas is dedicated.
- * The west half of section 6 is dedicated to the Pictured Cliffs.



Drilling Engineer

10/16/00

Date