

UNITED STATES
DEPARTMENT OF THE INTERIOR
BUREAU OF LAND MANAGEMENT

APPLICATION FOR PERMIT TO DRILL, DEEPEN, OR PLUG BACK

1a. Type of Work DRILL —	5. Lease Number SF-079403
	Unit Reporting Number 891000950B
1b. Type of Well GAS —	6. If Indian, All. or Tribe
2. Operator BURLINGTON RESOURCES Oil & Gas Company	7. Unit Agreement Name San Juan 27-5 Unit
3. Address & Phone No. of Operator PO Box 4289, Farmington, NM 87499 (505) 326-9700	8. Farm or Lease Name San Juan 27-5 Unit
	9. Well Number 162R
4. Location of Well 1580' FSL, 940' FEL Latitude 36° 32.6, Longitude 107° 20.4	10. Field, Pool, Wildcat Tapacito Pict. Cliffs
	11. Sec., Twn, Rge, Mer. (NMPM) I(1) Sec. 27, T-27-N, R-5-W API # 30-039-26525
14. Distance in Miles from Nearest Town 15 miles from Gobernador	12. County Rio Arriba
	13. State NM
15. Distance from Proposed Location to Nearest Property or Lease Line 940'	
16. Acres in Lease	17. Acres Assigned to Well 294.64 E/2
18. Distance from Proposed Location to Nearest Well, Drlg, Compl, or Applied for on this Lease 1200'	
19. Proposed Depth 3490'	20. Rotary or Cable Tools Rotary
21. Elevations (DF, FT, GR, Etc.) 6538' GR -	22. Approx. Date Work will Start
23. Proposed Casing and Cementing Program See Operations Plan attached	
24. Authorized by: <u><i>Diana C. Case</i></u> Regulatory/Compliance Supervisor	Date 10-6-00

PERMIT NO. _____

APPROVAL DATE _____

APPROVED BY /s/ Jim Lovato

TITLE _____

DATE 11

Archaeological Report to be submitted

Threatened and Endangered Species Report to be submitted

NOTE: This format is issued in lieu of U.S. BLM Form 3160-3

Title 18 U.S.C. Section 1001, makes it a crime for any person knowingly and willfully to make to any department or agency of the United States any false, fictitious or fraudulent statements or presentations as to any matter within its jurisdiction.

104000

District I
PO Box 1980, Hobbs, NM 88241-1980

District II
PO Drawer 00, Artesia, NM 88211-0719

District III
1000 Rio Brazos Rd., Aztec, NM 87410

District IV
PO Box 2088, Santa Fe, NM 87504-2088

State of New Mexico
Energy, Minerals & Natural Resources Department

OIL CONSERVATION DIVISION
PO Box 2088
Santa Fe, NM 87504-2088

Form C-102
Revised February 21, 1994
Instructions on back
Submit to Appropriate District Office
State Lease - 4 Copies
Free Lease - 3 Copies

☐ AMENDED REPORT

WELL LOCATION AND ACREAGE DEDICATION PLAT

*API Number 30-039-26525		*Pool Code 85920 -	*Pool Name Tapacito Pictured Cliffs
*Property Code 7454	*Property Name SAN JUAN 27-5 UNIT		*Well Number 162R
*GRID No. 14538	*Operator Name BURLINGTON RESOURCES OIL & GAS COMPANY		*Elevation 6538 -

10 Surface Location									
U. or lot no.	Section	Township	Range	Lot Ion	Feet from the	North/South line	Feet from the	East/West line	County
1	27	27N	5W		1580	SOUTH	940	EAST	RIO ARriba

11 Bottom Hole Location If Different From Surface									
U. or lot no.	Section	Township	Range	Lot Ion	Feet from the	North/South line	Feet from the	East/West line	County

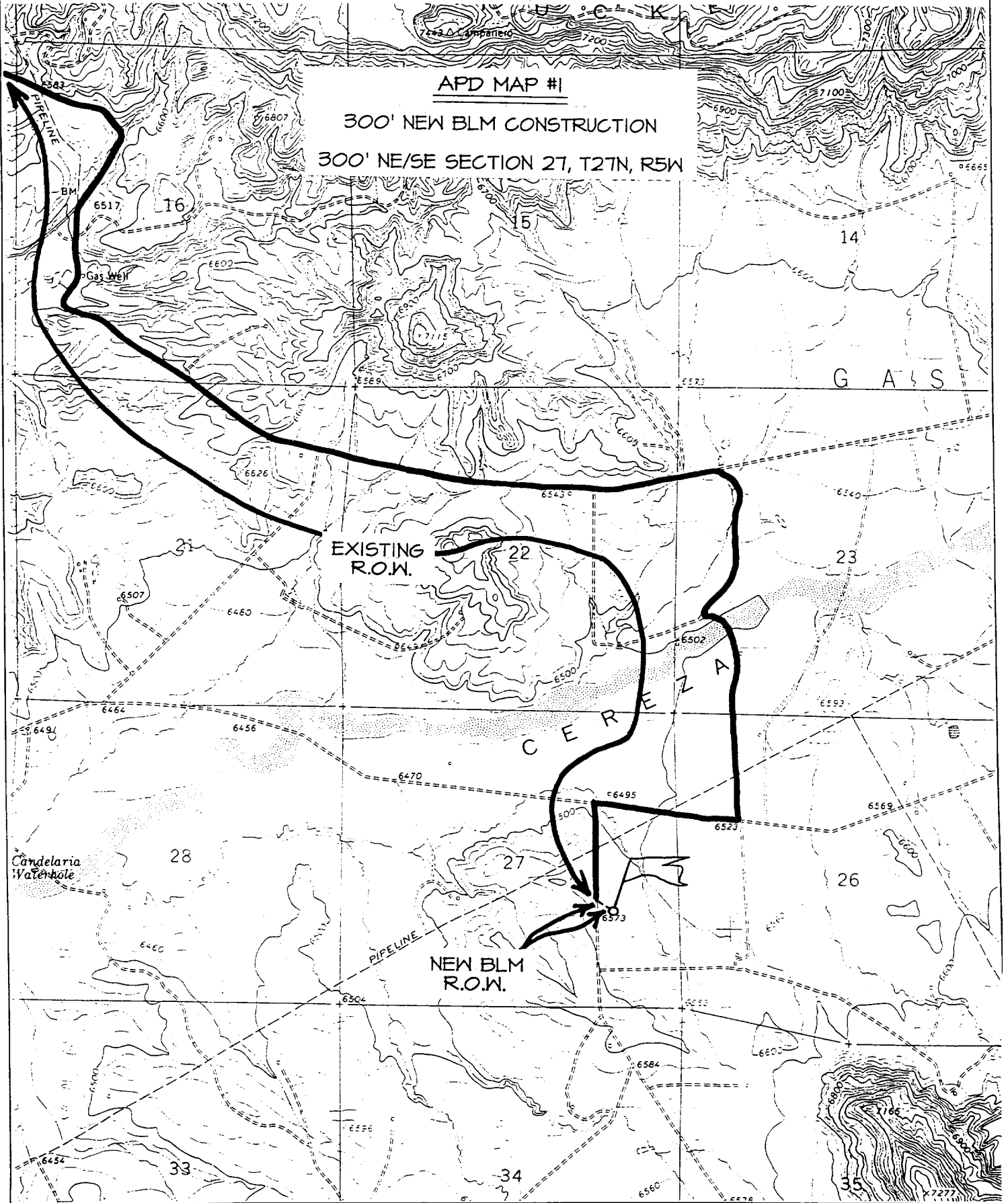
12 Dedicated Acres E/294.64	13 Joint, or Infill	14 Consolidation Code	15 Order No. 160 acres for density purposes for the Pictured Cliffs 320 acres for Revenue purposes for the Pictured Cliffs
--------------------------------	---------------------	-----------------------	--

NO ALLOWABLE WILL BE ASSIGNED TO THIS COMPLETION UNTIL ALL INTERESTS HAVE BEEN CONSOLIDATED
OR A NON-STANDARD UNIT HAS BEEN APPROVED BY THE DIVISION

16				17 OPERATOR CERTIFICATION	
5271.42'				I hereby certify that the information contained herein is true and complete to the best of my knowledge and belief	
LOT 4 LOT 3 LOT 2 LOT 1				Signature <i>Peggy Cole</i>	
2280.96'				Printed Name Peggy Cole	
LOT 5 LOT 7 LOT 8				Title Regulatory Supervisor	
2573.34'				Date 10-6-00	
27				18 SURVEYOR CERTIFICATION	
LOT 10 LOT 9				I hereby certify that the well location shown on this plat was plotted from field notes of actual surveys made by me or under my supervision, and that the same is true and correct to the best of my belief.	
LOT 11 LOT 12				Date of Survey AUGUST 17, 2000	
5412.66'				Signature and Seal <i>Neale C. Edwards</i>	
1580' 940' 4792.26'				Certificate NEALE C. EDWARDS NEW MEXICO 6857	
LAT: 36°32.6'N LONG: 107°20.4'W				6857	

1580' FSL & 940' FEL, SECTION 27, T27N, R5W, N.M.P.M.
RIO ARriba COUNTY, NEW MEXICO

300' NEW BLM CONSTRUCTION
300' NE/SE SECTION 27, T27N, R5W



OPERATIONS PLAN

Well Name: San Juan 27-5 Unit #162R
Location: 1580' FSL, 940' FEL, Section 27, T-27-N, R-5-W
Rio Arriba County, New Mexico
Latitude 36° 32.6, Longitude 107° 20.4
Formation: Tapacito Pictured Cliffs
Elevation: 6569' GL

Formation:	Top	Bottom	Contents
Surface	San Jose	2655'	
Ojo Alamo	2655'	2870'	aquifer
Kirtland	2870'	2885'	gas
Fruitland	2885'	3290'	gas
Pictured Cliffs	3290'		gas
Total Depth	3490'		

Logging Program: Surface to TD - CBL-CCL-GR

Coring Program: None

Mud Program:

<u>Interval</u>	<u>Type</u>	<u>Weight</u>	<u>Vis.</u>	<u>Fluid Loss</u>
0- 200'	Spud	8.4-9.0	40-50	no control
200-3490'	FW	8.4-9.0	32-45	no control

Casing Program (as listed, equivalent, or better):

<u>Hole Size</u>	<u>Depth Interval</u>	<u>Csq. Size</u>	<u>Wt.</u>	<u>Grade</u>
8 3/4"	0 - 200'	7"	20.0#	J-55
6 1/4"	0 - 3490'	2 7/8"	6.5#	J-55

Float Equipment: 7" surface casing - saw tooth guide shoe.
Centralizers will be run in accordance with Onshore Order #2.

2 7/8" production casing - float shoe on bottom. Three centralizers run every other joint above shoe. Seven centralizers run every 3rd joint to the base of the Ojo Alamo @ 2870'. Two turbolizing type centralizers - one below and one into the base of the Ojo Alamo @ 2870'. Standard centralizers thereafter every fourth joint up to the base of the surface pipe.

Wellhead Equipment: 7" x 2 7/8" 2000 psi screw on independent wellhead.

Cementing:

7" surface casing - cement with 76 sx Class "B" cement with 1/4# flocele/sx and 3% calcium chloride (90 cu.ft. of slurry, 200% excess to circulate to surface). WOC 8 hrs. Test casing to 600 psi for 30 minutes.

San Juan 27-5 Unit #162R

2 7/8" production casing - Lead w/362 sx Class "B" w/3% sodium metasilicate, 1/2 pps Flocele and 10 pps gilsonite. Tail w/90 sx 50/50 Class "B" Poz w/2% gel, 1/4 pps Flocele, 5 pps gilsonite and 2% calcium chloride (1173 cu.ft. of slurry, 100% excess to circulate to surface). WOC 8 hrs. If cement does not circulate to surface, a CBL will be run during completion to determine TOC.

BOP and tests:

Surface to TD - 11" 2000 psi (minimum double gate BOP stack (Reference Figure #1 and #2). Prior to drilling out surface casing, test rams to 600 psi/30 min.

Completion - 6" 2000 psi (minimum) double gate BOP stack (Reference Figure #2). Prior to completion operations, test rams and casing to 2000 psi/15 min.

From surface to TD - choke manifold (Reference Figure #3).

Pipe rams will be actuated to least once each day and blind rams actuated once each trip to test proper functioning. An upper kelly cock valve with handle and drill string safety valves to fit each drill string will be maintained and available on the rig floor.

Additional information:

- * The Pictured Cliffs formation will be completed.
- * Anticipated pore pressure for the Pictured Cliffs is 500 psi.
- * This gas is dedicated.
- * The east half of section 27 is dedicated to the Pictured Cliffs.

Eric J. Giles
Drilling Engineer

10/16/00
Date