

District I
1625 N. French Dr., Hobbs, NM 88240
District II
811 South First, Artesia, NM 88210
District III
1000 Rio Brazos Road, Aztec, NM 87410
District IV
2040 South Pacheco, Santa Fe, NM 87505

State of New Mexico
Energy Minerals and Natural Resources

Form C-101
Revised March 17, 1999

Oil Conservation Division
2040 South Pacheco
Santa Fe, NM 87505

Submit to appropriate District Office
State Lease - 6 Copies
Fee Lease - 5 Copies

☐ AMENDED REPORT

APPLICATION FOR PERMIT TO DRILL, RE-ENTER, DEEPEN, PLUGBACK, OR ADD A ZONE

¹ Operator Name and Address Conoco Inc., 10 Desta Drive, Suite 649W, Midland, TX 79705		² OGRID Number 005073
		³ API Number 30 - 039 - 26559
³ Property Code 016608	⁵ Property Name San Juan 28-7	⁶ Well No. 129R

⁷ Surface Location

UL or lot no.	Section	Township	Range	Lot Idn	Feet from the	North/South line	Feet from the	East/West line	County
G	2	27N	7W		1680	North	1695	East	Rio Arriba

⁸ Proposed Bottom Hole Location If Different From Surface

UL or lot no.	Section	Township	Range	Lot Idn	Feet from the	North/South line	Feet from the	East/West line	County
⁹ Proposed Pool 1 Basin Dakota						¹⁰ Proposed Pool 2 Blanco Mesaverde			

¹¹ Work Type Code N	¹² Well Type Code M	¹³ Cable/Rotary R	¹⁴ Lease Type Code S	¹⁵ Ground Level Elevation 6567'
¹⁶ Multiple Yes	¹⁷ Proposed Depth 7700'	¹⁸ Formation Dakota/Mesaverde	¹⁹ Contractor	²⁰ Spud Date 11/15/00

²¹ Proposed Casing and Cement Program

Hole Size	Casing Size	Casing weight/foot	Setting Depth	Sacks of Cement	Estimated TOC
12-1/2"	J-55, 9-5/8"	36#	250'	124	Surface
8-3/4"	J-55, 7"	20#	3700'	520	Surface
6-1/4"	J-55, 4-1/2"	10.5#	7700'	523	3600'

22 Describe the proposed program. If this application is to DEEPEN or PLUG BACK, give the data on the present productive zone and proposed new productive zone. Describe the blowout prevention program, if any. Use additional sheets if necessary.

It is proposed to drill a vertical wellbore to be dowhole comingled in the Blanco Mesaverde and Basin Dakota Pools following the acquisition of sufficient production test data for allocation purposes. A downhole commingling application will be filed. Well Location and Acreage Dedication Plat (C-102)

- Proposed Well Plan Outline
- Cementing Program
- BOP/Choke Diagram

²³ I hereby certify that the information given above is true and complete to the best of my knowledge and belief.		OIL CONSERVATION DIVISION	
Signature: <i>Kimberly Southall</i>		Approved by: <i>[Signature]</i>	
Printed name: Kimberly Southall		Title: DEPUTY OIL & GAS INSPECTOR DIST. 4	
Title: Analyst		Approval Date: NOV 14 2000	Expiration Date: NOV 11 2001
Date: 11/9/00	Phone: 915/686-5565	Conditions of Approval: Attached <input type="checkbox"/>	

NOV 14 2000 FOR Change of status on 28-7 #129

District I
PO Box 1980, Hobbs, NM 88241-1980

State of New Mexico
Energy, Minerals & Natural Resources Department

Form C-102
Revised February 21, 1994

District II
PO Drawer 00, Artesia, NM 88211-0719

OIL CONSERVATION DIVISION
PO Box 2088
Santa Fe, NM 87504-2088

Submit to Appropriate District Office
State Lease - 4 Copies
Fee Lease - 3 Copies

District III
1000 Rio Brazos Rd., Aztec, NM 87410

District IV
PO Box 2088, Santa Fe, NM 87504-2088

☐ AMENDED REPORT

WELL LOCATION AND ACREAGE DEDICATION PLAT

¹ API Number 30-039-26559	² Pool Code 72319 - / 71599 -	³ Pool Name BLANCO MESAVERDE / BASIN DAKOTA
⁴ Property Code 016608	⁵ Property Name SAN JUAN 28-7 UNIT	⁶ Well Number 129R
⁷ GRID No. 005073	⁸ Operator Name CONOCO, INC.	⁹ Elevation 6567'

¹⁰ Surface Location


UL or lot no. G	Section 2	Township 27N	Range 7W	Lot Idn	Feet from the 1680	North/South line NORTH	Feet from the 1695	East/West line EAST	County RIO ARriba
--------------------	--------------	-----------------	-------------	---------	-----------------------	---------------------------	-----------------------	------------------------	----------------------

¹¹ Bottom Hole Location If Different From Surface

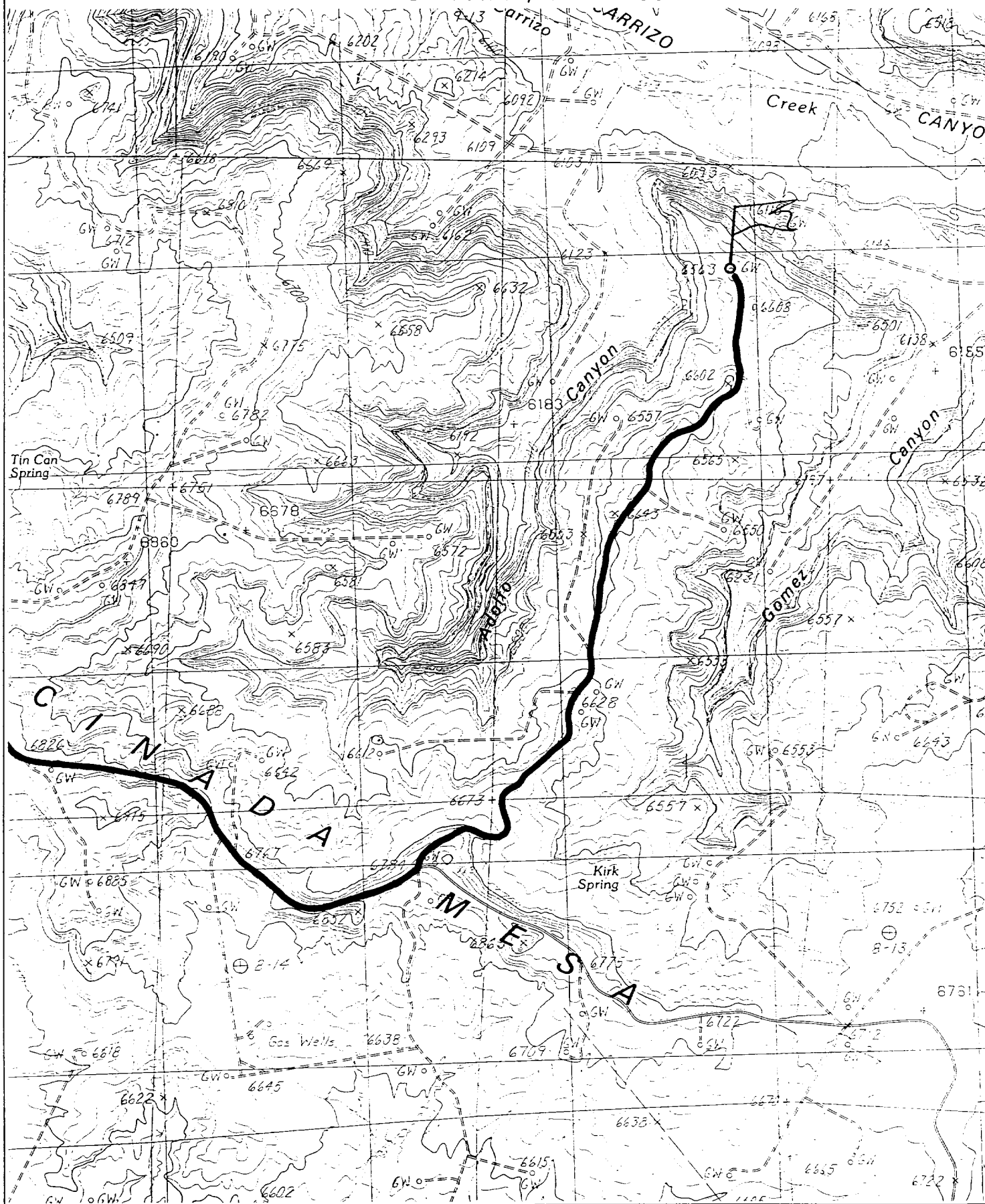
UL or lot no.	Section	Township	Range	Lot Idn	Feet from the	North/South line	Feet from the	East/West line	County
---------------	---------	----------	-------	---------	---------------	------------------	---------------	----------------	--------

¹² Dedicated Acres 319.12	¹³ Joint or Infill	¹⁴ Consolidation Code	¹⁵ Order No.
---	-------------------------------	----------------------------------	-------------------------

NO ALLOWABLE WILL BE ASSIGNED TO THIS COMPLETION UNTIL ALL INTERESTS HAVE BEEN CONSOLIDATED OR A NON-STANDARD UNIT HAS BEEN APPROVED BY THE DIVISION

¹⁶ 2629.44' 1285.68' LOT 4 1304.16' 2608.32'	¹⁷ OPERATOR CERTIFICATION I hereby certify that the information contained herein is true and complete to the best of my knowledge and belief Signature JoAnn Johnson Printed Name Sr. Property Analyst Title 11-8-00 Date ¹⁸ SURVEYOR CERTIFICATION I hereby certify that the well location shown on this plat was plotted from field notes of actual surveys made by me or under my supervision and that the same is true and correct to the best of my belief. AUGUST 24, 2000 Date of Survey Signature and Seal of Registered Professional Surveyor  Certificate Number 6857	2634.72' 1263.90' LOT 1 1277.10' 2553.54'
--	--	---

CONOCO, INC. SAN JUAN 28-7 UNIT #129R
1680' FNL & 1695' FEL, SECTION 2, T27N, R7W, N.M.P.M.
RIO ARRIBA COUNTY, NEW MEXICO



BOP SPECIFICATIONS

