

UNITED STATES  
DEPARTMENT OF THE INTERIOR  
BUREAU OF LAND MANAGEMENT

APPLICATION FOR PERMIT TO DRILL, DEEPEN, OR PLUG BACK

200 DEC -6 PM 2:29  
FARMINGTON, N.M.

1a. Type of Work  
DRILL -

5. Lease Number  
SF-079392  
Unit Reporting Number

1b. Type of Well  
GAS

6. If Indian, All. or Tribe

2. Operator  
*JH*  
**BURLINGTON RESOURCES** Oil & Gas Company  
JAN 2001

7. Unit Agreement Name  
San Juan 27-5 Unit

3. Address & Phone No. of Operator  
PO Box 4289, Farmington, NM 87499  
(505) 326-9700

8. Farm or Lease Name  
San Juan 27-5 Unit

9. Well Number  
179R

4. Location of Well  
1575' FSL, 1495' FEL  
Latitude 36° 34.2, Longitude 107° 22.7

10. Field, Pool, Wildcat  
Tapacito Pict. Cliffs

11. Sec., Twn, Rge, Mer. (NMPM)  
Sec. 17, T-27-N, R-5-W  
API # 30-039-2660 ✓

14. Distance in Miles from Nearest Town  
10 miles from Gobernador

12. County  
Rio Arriba

13. State  
NM

15. Distance from Proposed Location to Nearest Property or Lease Line  
1495'

16. Acres in Lease

17. Acres Assigned to Well  
~~321.74 E/2~~  
165.27 SE/4

18. Distance from Proposed Location to Nearest Well, Drig, Compl, or Applied for on this Lease  
75'

19. Proposed Depth  
3437' -

20. Rotary or Cable Tools  
Rotary

21. Elevations (DF, FT, GR, Etc.)  
6453' GR

22. Approx. Date Work will Start

23. Proposed Casing and Cementing Program  
See Operations Plan attached

24. Authorized by: *Jim Lovato*  
Regulatory/Compliance Supervisor

Date: *10-20-00*

PERMIT NO. \_\_\_\_\_ APPROVAL DATE \_\_\_\_\_  
APPROVED BY /s/ Jim Lovato TITLE \_\_\_\_\_ DATE JAN 26 2001

Archaeological Report to be submitted  
Threatened and Endangered Species Report to be submitted  
NOTE: This format is issued in lieu of U.S. BLM Form 3160-3  
Title 18 U.S.C. Section 1001, makes it a crime for any person knowingly and willfully to make to any department or agency of the United States any false, fictitious or fraudulent statements or presentations as to any matter within its jurisdiction.

NMDCD

District I  
PO Box 1980, Hobbs, NM 88241-1980

District II  
PO Drawer DD, Artesia, NM 88211-0719

District III  
1000 Rio Brazos Rd., Aztec, NM 87410

District IV  
PO Box 2088, Santa Fe, NM 87504-2088

State of New Mexico  
Energy, Minerals & Natural Resources Department

Form C-102  
Revised February 21, 1994

Instructions on back  
Submit to Appropriate District Office  
State Lease - 4 Copies  
Fee Lease - 3 Copies

OIL CONSERVATION DIVISION  
PO Box 2088  
Santa Fe, NM 87504-2088

AMENDED REPORT

WELL LOCATION AND ACREAGE DEDICATION PLAT

*API Number 30-039- <i>26602</i>		*Pool Code 85920	*Pool Name Tapacito Pictured Cliffs
*Property Code 7454	*Property Name SAN JUAN 27-5 UNIT		*Well Number 179R
*OGRID No. 14538	*Operator Name BURLINGTON RESOURCES OIL & GAS COMPANY		*Elevation 6453

10 Surface Location

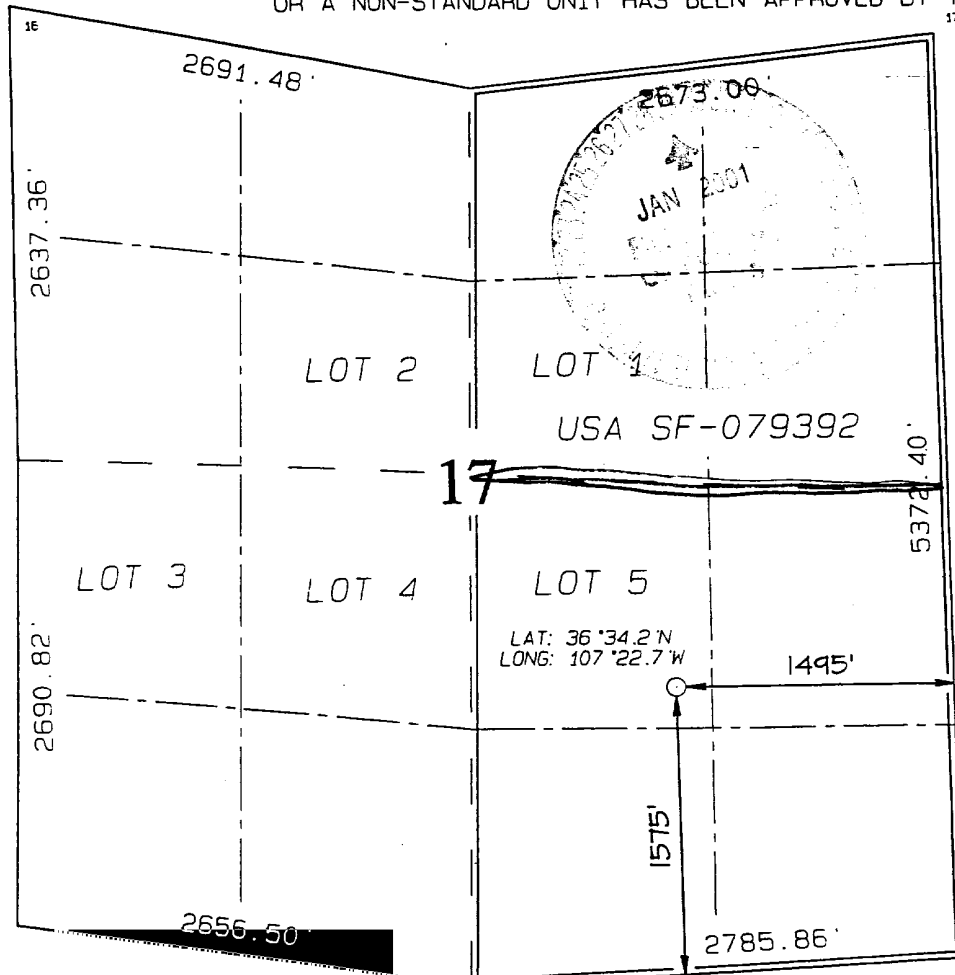
UL or lot no.	Section	Township	Range	Lot Idn	Feet from the	North/South line	Feet from the	East/West line	County
J	17	27N	5W		1575	SOUTH	1495'	EAST	RIO ARriba

11 Bottom Hole Location If Different From Surface

UL or lot no.	Section	Township	Range	Lot Idn	Feet from the	North/South line	Feet from the	East/West line	County

12 Dedicated Acres <i>165.27 SEA</i>	13 Joint or Infill	14 Consolidation Code	15 Order No. 160 acres for density purposes for the Pictured Cliffs 320 acres for revenue purposes for the Pictured Cliffs
---	--------------------	-----------------------	--

NO ALLOWABLE WILL BE ASSIGNED TO THIS COMPLETION UNTIL ALL INTERESTS HAVE BEEN CONSOLIDATED OR A NON-STANDARD UNIT HAS BEEN APPROVED BY THE DIVISION



17 OPERATOR CERTIFICATION

I hereby certify that the information contained herein is true and complete to the best of my knowledge and belief

*Peggy Cole*  
Signature

Peggy Cole  
Printed Name

Regulatory Supervisor  
Title

18 Date  
10-20-00

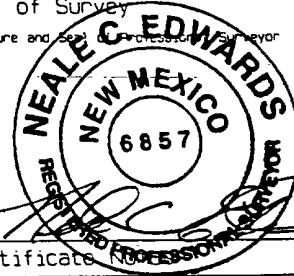
19 SURVEYOR CERTIFICATION

I hereby certify that the well location shown on this plat was plotted from field notes of actual surveys made by me or under my supervision and that the same is true and correct to the best of my belief.

SEPTEMBER 13, 2000

Date of Survey

Signature and Seal of Professional Surveyor



Certificate No. 6857

OPERATIONS PLAN

**Well Name:** San Juan 27-5 Unit #179R  
**Location:** 1575' FSL, 1495' FEL, Section 17, T-27-N, R-5-W  
Rio Arriba County, New Mexico  
Latitude 36° 34.2, Longitude 107° 22.7  
**Formation:** Tapacito Pictured Cliffs  
**Elevation:** 6453' GL

<b>Formation:</b>	<b>Top</b>	<b>Bottom</b>	<b>Contents</b>
Surface	San Jose	2626'	
Ojo Alamo	2626'	2726'	aquifer
Kirtland	2726'	2825'	gas
Fruitland	2825'	3237'	gas
Pictured Cliffs	3237'		gas
Total Depth	3437'		

**Logging Program:** Surface to TD - CBL-CCL-GR

**Coring Program:** None

**Mud Program:**

<u>Interval</u>	<u>Type</u>	<u>Weight</u>	<u>Vis.</u>	<u>Fluid Loss</u>
0- 200'	Spud	8.4-9.0	40-50	no control
200-3437'	FW	8.4-9.0	32-45	no control

**Casing Program (as listed, equivalent, or better):**

<u>Hole Size</u>	<u>Depth Interval</u>	<u>Csg. Size</u>	<u>Wt.</u>	<u>Grade</u>
8 3/4"	0 - 200'	7"	20.0#	J-55
6 1/4"	0 - 3437'	2 7/8"	6.5#	J-55

**Float Equipment:** 7" surface casing - saw tooth guide shoe.  
Centralizers will be run in accordance with Onshore Order #2.

2 7/8" production casing - float shoe on bottom. Three centralizers run every other joint above shoe. Seven centralizers run every 3rd joint to the base of the Ojo Alamo @ 2726'. Two turbolizing type centralizers - one below and one into the base of the Ojo Alamo @ 2726'. Standard centralizers thereafter every fourth joint up to the base of the surface pipe.

**Wellhead Equipment:** 7" x 2 7/8" 2000 psi screw on independent wellhead.

**Cementing:**

7" surface casing - cement with 76 sx Class "B" cement with 1/4# flocele/sx and 3% calcium chloride (90 cu.ft. of slurry, 200% excess to circulate to surface). WOC 8 hrs. Test casing to 600 psi for 30 minutes.

2 7/8" production casing - Lead w/356 sx Class "B" w/3% sodium metasilicate, 1/2 pps Flocele and 10 pps gilsonite. Tail w/90 sx 50/50 Class "B" Poz w/2% gel, 1/4 pps Flocele, 5 pps gilsonite and 2% calcium chloride (1155 cu.ft. of slurry, 100% excess to circulate to surface). WOC 8 hrs. If cement does not circulate to surface, a CBL will be run during completion to determine TOC.

**Note:** If open hole logs are run, cement volumes will be based on 25% excess over caliper volumes.

**BOP and tests:**

Surface to TD - 11" 2000 psi (minimum double gate BOP stack (Reference Figure #1 and #2). Prior to drilling out surface casing, test rams to 600 psi/30 min.

Completion - 6" 2000 psi (minimum) double gate BOP stack (Reference Figure #2). Prior to completion operations, test rams and casing to 2000 psi/15 min.

From surface to TD - choke manifold (Reference Figure #3).

Pipe rams will be actuated to least once each day and blind rams actuated once each trip to test proper functioning. An upper kelly cock valve with handle and drill string safety valves to fit each drill string will be maintained and available on the rig floor.

**Additional information:**

- \* The Pictured Cliffs formation will be completed.
- \* Anticipated pore pressure for the Pictured Cliffs is 500 psi.
- \* This gas is dedicated.
- \* The east half of section 17 is dedicated to the Pictured Cliffs.

*Erin J. Giles*

Drilling Engineer

10/23/06

Date

