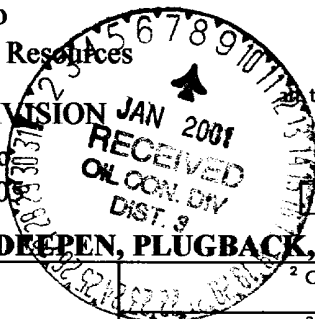


District I  
1625 N. French Dr., Hobbs, NM 88240  
District II  
811 South First, Artesia, NM 88210  
District III  
1000 Rio Brazos Rd., Aztec, NM 87410  
District IV  
2040 South Pacheco, Santa Fe, NM 87505

State of New Mexico  
Energy, Minerals and Natural Resources

OIL CONSERVATION DIVISION  
2040 South Pacheco  
Santa Fe, NM 87505

Form C-101  
Revised March 17, 1999  
to appropriate District Office  
State Lease - 6 Copies  
Fee Lease - 5 Copies



AMENDED REPORT

APPLICATION FOR PERMIT TO DRILL, RE-ENTER, DEEPEN, PLUGBACK, OR ADD A ZONE

<sup>1</sup> Operator name and Address PURE RESOURCES P.O. BOX 850 BLOOMFIELD, NM 87413		<sup>2</sup> OGRID Number 189071
<sup>3</sup> API Number 30-039-26628		
<sup>4</sup> Property Code 028629	<sup>5</sup> Property Name RINCON UNIT	<sup>6</sup> Well Number 181M

<sup>7</sup> Surface Location									
UI or lot no.	Section	Township	Range	Lot Idn	Feet from the	North/South Line	Feet from the	East/West Line	County
F	22	27-N	6-W		1395'	NORTH	1598'	WEST	RIO ARriba

<sup>8</sup> Proposed Bottom Hole Location If Different From Surface									
UI or lot no.	Section	Township	Range	Lot Idn	Feet from the	North/South Line	Feet from the	East/West Line	County
<sup>9</sup> Proposed Pool 1 BASIN DAKOTA					<sup>10</sup> Proposed Pool 2 BLANCO MESA VERDE				

<sup>11</sup> Work Type Code N -	<sup>12</sup> Well Type Code M 9-	<sup>13</sup> Cable/ Rotary R	<sup>14</sup> lease Type Code S -	<sup>15</sup> Ground Level Elevation 6385'
<sup>16</sup> Multiple YES	<sup>17</sup> Proposed Depth 7800'	<sup>18</sup> Formation DAKOTA	<sup>19</sup> Contractor BEARCAT	<sup>20</sup> Spud Date ASAP

<sup>21</sup> Proposed Casing and Cement Program					
Hole Size	Casing Size	Casing weight/foot	Setting Depth	Sacks of Cement	Estimated TOC
12-1/4"	9-5/8"	32.3#	350'	285SXS	CIRCULATED
8-3/4"	7"	20#	2800'	350SXS	CIRCULATED
6-1/4"	4-1/2"	11.6#	7800'	600SXS	100' INSIDE OF 7"

<sup>22</sup> Describe the proposed program. If this application is to DEEPEN or PLUG BACK. Give the data on the present productive zone and proposed new productive zone. Describe the blowout prevention program, if any. Use additional sheets if necessary

MIRU DRILLING RIG. SPUD 12-1/4" HOLE AND DRILL W/FLUID TO ±350'. RUN AND CMT 9-5/8" CASING W/285SXS B CMT +2% CACL2 +1/4# /SACK CELLO-FLAKE. 14.5 PPG. DRILL 8-3/4" HOLE W/MUD AND TD THROUGH OJO ALAMO AND INTO KIRTLAND SAND. CMT 7" CSG W/300SXS B 35.65 POZ + 8% GEL + 2% CACL2 + 25LBS/SX CELLO-FLAKE F/B 50 SXS B + 2% CACL2. 14.5 PPG. DRILL 6-1/4" HOLE W/AIR/ NITROGEN AND HAMMER TO TD. RUN AND CMT 4-1/2 " CSG TO TD W/600 SXS POZ + 10# CSE + 1/4# CS + .2% CD-32 + .65% FL-62 + 6% GEL +3% KCL @12.5PPG. TIE CMT INTO INTERMEDIATE. DRILL OUT WELL AND RUN CNL-CCL-GR. COMPLETE WELL IN DAKOTA AND MESA VERDE FORMATIONS W/NITROFIED FRACS. ~~REWORK - COMING LATE~~

<sup>23</sup> I hereby certify that the information given above is true and complete to the best of my knowledge and belief.		OIL CONSERVATION DIVISION	
Signature: <i>Michael C. Phillips</i>		Approved by: <i>[Signature]</i>	
Printed name: MICHEAL C. PHILLIPS		Title: DEPUTY OIL & GAS INSPECTOR, DIST. 3	
Title: SAN JUAN BASIN FOREMAN		Approval Date: JAN 08 2001 Expiration Date: JAN 08 2002	
Date: 11/08/00	Phone: (505) 632 - 1811	Conditions of Approval	
		Attached <input type="checkbox"/>	

DISTRICT I  
1625 N. French Dr., Hobbs, N.M. 88240

DISTRICT II  
811 South First, Artesia, N.M. 88210

DISTRICT III  
1000 Rio Brazos Rd., Aztec, N.M. 87410

DISTRICT IV  
2040 South Pacheco, Santa Fe, NM 87505

State of New Mexico  
Energy, Minerals & Natural Resources Department

Form C-102  
Revised August 15, 2000

Submit to Appropriate District Office  
State Lease - 4 Copies  
Fee Lease - 3 Copies

OIL CONSERVATION DIVISION  
2040 South Pacheco  
Santa Fe, NM 87505

☐ AMENDED REPORT

WELL LOCATION AND ACREAGE DEDICATION PLAT

*API Number 30-039-26628		*Pool Code 71599	*Pool Name Basin Dakota
*Property Code 26629	*Property Name RINCON UNIT		*Well Number 181M
*OGRID No. 189071	*Operator Name PURE RESOURCES		*Elevation 6385'

10 Surface Location

UL or lot no.	Section	Township	Range	Lot Idn	Feet from the	North/South line	Feet from the	East/West line	County
F	22	27-N	6-W		1395'	NORTH	1598'	WEST	RIO ARRIBA

11 Bottom Hole Location If Different From Surface

UL or lot no.	Section	Township	Range	Lot Idn	Feet from the	North/South line	Feet from the	East/West line	County

12 Dedicated Acres 320 N/2	13 Joint or Infill	14 Consolidation Code	15 Order No.
-------------------------------	--------------------	-----------------------	--------------

NO ALLOWABLE WILL BE ASSIGNED TO THIS COMPLETION UNTIL ALL INTERESTS HAVE BEEN CONSOLIDATED  
OR A NON-STANDARD UNIT HAS BEEN APPROVED BY THE DIVISION

16 N 89-53-52 E SEC. CORNER FD B.L.M. BC 1955  2631.75'  QTR. CORNER FD B.L.M. BC 1955 N 89-53-52 E 2648.25' SEC. CORNER FD B.L.M. BC 1955  1395' 85' 1598' 282' 181M LAT. 36°33'48"N LONG. 107°27'29"W  S 01-11-06 W  SEC. CORNER FD B.L.M. BC 1955	17 OPERATOR CERTIFICATION I hereby certify that the information contained herein is true and complete to the best of my knowledge and belief.  Signature Micheal C. Phillips  Printed Name San Juan Basin Foreman  Title 1/6/01  Date	18 SURVEYOR CERTIFICATION I hereby certify that the well location shown on this plat was plotted from field notes of actual surveys made by me or under my supervision and that the same is true and correct to the best of my belief.  Date of Survey 12-11-00 Signature and Seal of Professional Surveyor: 8894 Certificate Number
---	---	--

DISTRICT I  
1625 N. French Dr., Hobbs, N.M. 88240

State of New Mexico  
Energy, Minerals & Natural Resources Department

Form C-102  
Revised August 15, 2000

DISTRICT II  
811 South First, Artesia, N.M. 88210

Submit to Appropriate District Office  
State Lease - 4 Copies  
Fee Lease - 3 Copies

DISTRICT III  
1000 Rio Brazos Rd., Aztec, N.M. 87410

OIL CONSERVATION DIVISION  
2040 South Pacheco  
Santa Fe, NM 87505

DISTRICT IV  
2040 South Pacheco, Santa Fe, NM 87505

☐ AMENDED REPORT

WELL LOCATION AND ACREAGE DEDICATION PLAT

*API Number 30-039-26628		*Pool Code 72319	*Pool Name Blanco Mesa Verde
*Property Code 26629	*Property Name RINCON UNIT		*Well Number 181M
*OGRID No. 189071	*Operator Name PURE RESOURCES		*Elevation 6385'

<sup>10</sup> Surface Location

UL or lot no.	Section	Township	Range	Lot Idn	Feet from the	North/South line	Feet from the	East/West line	County
F	22	27-N	6-W		1395'	NORTH	1598'	WEST	RIO ARRIBA

<sup>11</sup> Bottom Hole Location If Different From Surface

UL or lot no.	Section	Township	Range	Lot Idn	Feet from the	North/South line	Feet from the	East/West line	County

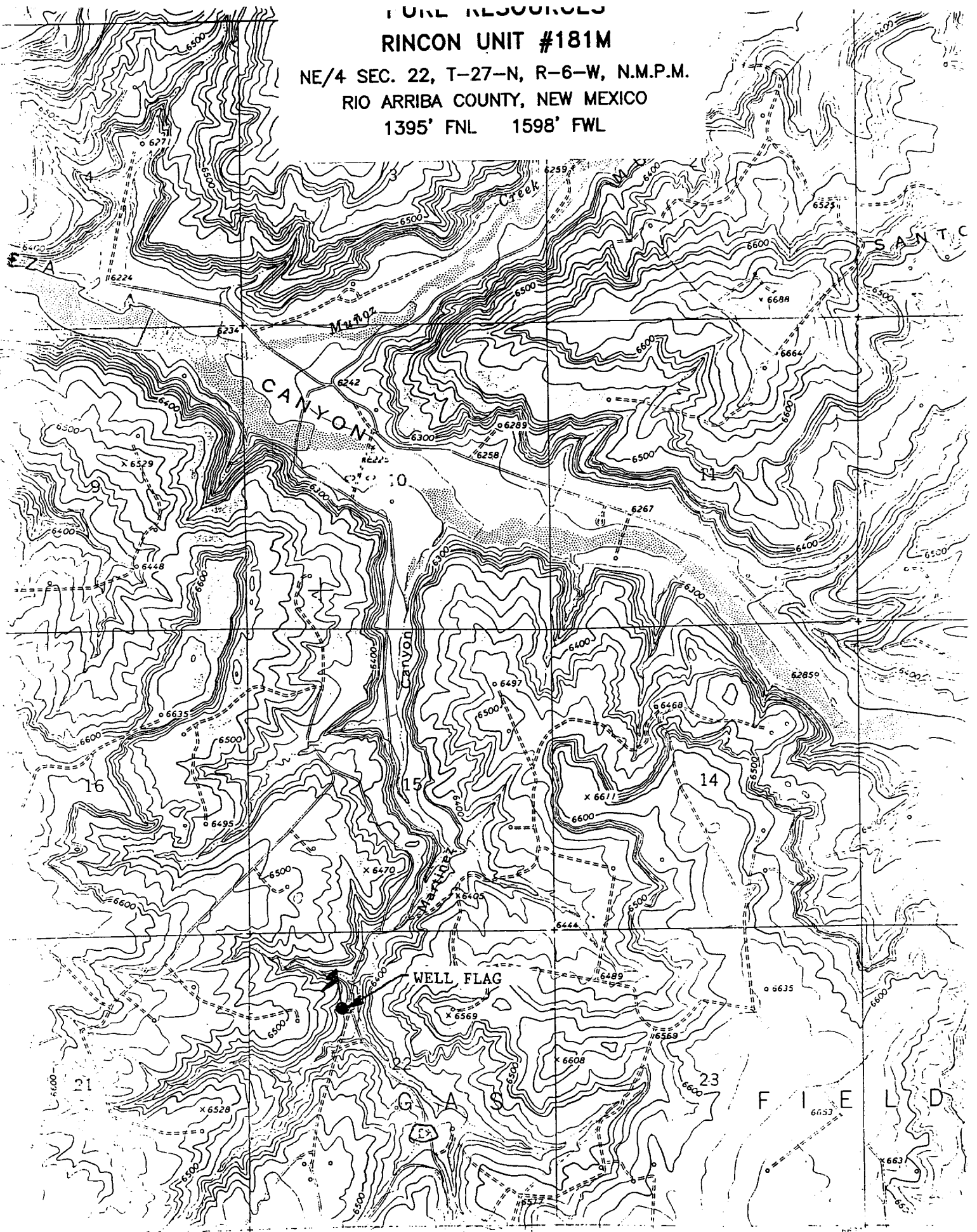
<sup>12</sup> Dedicated Acres 320 N/2	<sup>13</sup> Joint or Infill	<sup>14</sup> Consolidation Code	<sup>15</sup> Order No.
--	-------------------------------	----------------------------------	-------------------------

NO ALLOWABLE WILL BE ASSIGNED TO THIS COMPLETION UNTIL ALL INTERESTS HAVE BEEN CONSOLIDATED  
OR A NON-STANDARD UNIT HAS BEEN APPROVED BY THE DIVISION

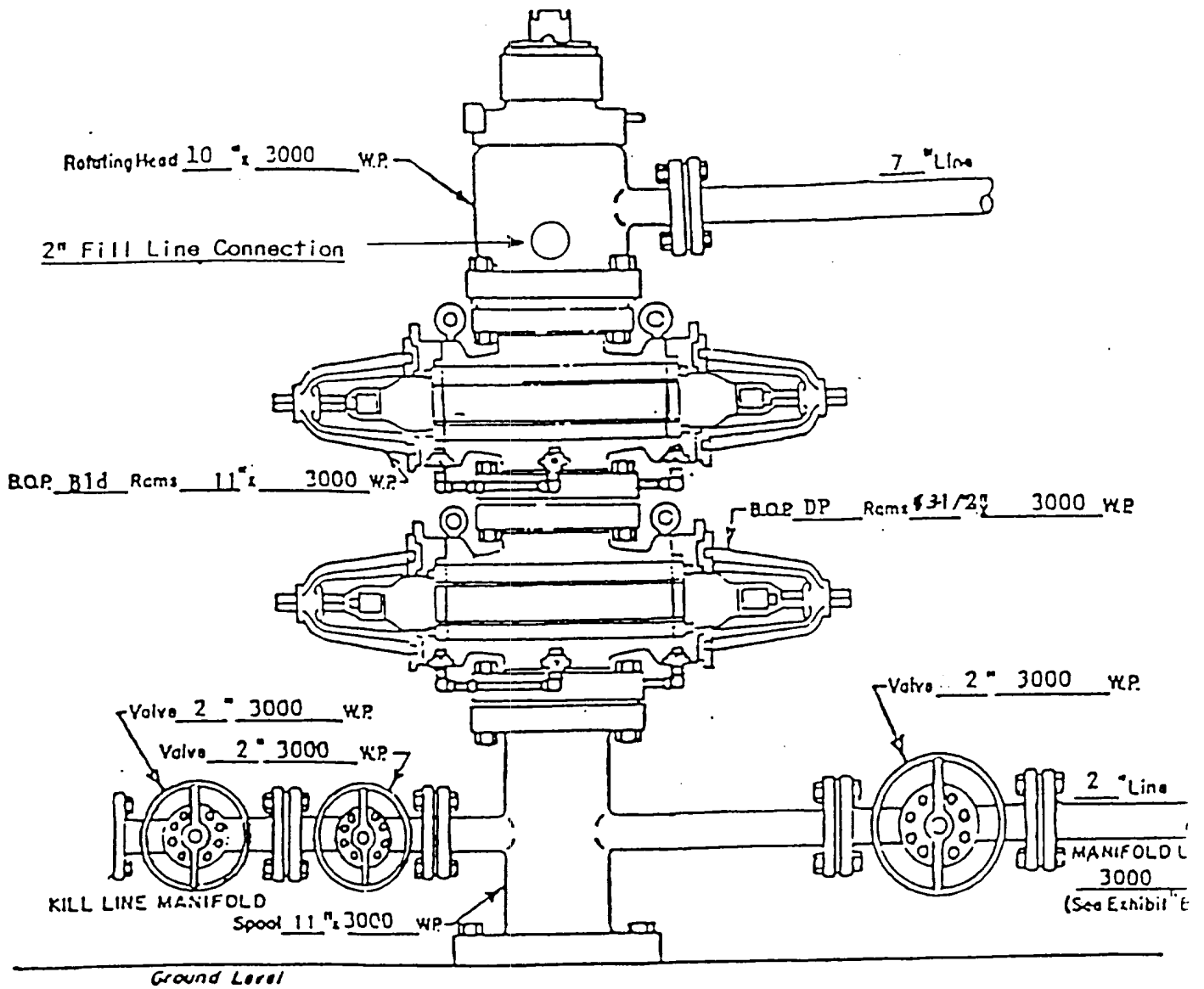
<sup>16</sup> N 89-53-52 E SEC. CORNER FD B.L.M. BC 1955		2631.75'	QTR. CORNER FD B.L.M. BC 1955	N 89-53-52 E 2648.25'	SEC. CORNER FD B.L.M. BC 1955	<sup>17</sup> OPERATOR CERTIFICATION I hereby certify that the information contained herein is true and complete to the best of my knowledge and belief.  Signature <u>Micheal C. Phillips</u> Micheal C. Phillips Printed Name San Juan Basin Foreman Title 1/6/01 Date
1598'		85'	LAT. 36°33'48"N LONG. 107°27'29"W			
282'		1395'	22			
S 01-11-06 W						<sup>18</sup> SURVEYOR CERTIFICATION I hereby certify that the well location shown on this plat was plotted from field notes of actual surveys made by me or under my supervision and that the same is true and correct to the best of my belief.  Date of Survey 12/1/00 Signature and Seal of Professional Surveyor:  8894 Certificate Number
SEC. CORNER FD B.L.M. BC 1955						

PURE RESOURCES  
RINCON UNIT #181M

NE/4 SEC. 22, T-27-N, R-6-W, N.M.P.M.  
RIO ARriba COUNTY, NEW MEXICO  
1395' FNL 1598' FWL



RINCON UNIT WELLS  
RINCON FIELD  
RIO ARriba COUNTY, NEW MEXICO



WELL HEAD B.O.P.  
3000 #W.P.

☐ Manual  
☒ Hydraulic

NOTE: Although 3000 psi BOP equipment will be used, equipment determination and line sizing are based on the requirements for 2000 psi BOP equipment due to the known drilling and reservoir conditions.

ATTACHMENT NO. 1