

NR603

District I
PO Box 1980, Hobbs, NM 88241-1980

District II
PO Drawer 100, Artesia, NM 88211-0719

District III
1000 Rio Brazos Rd., Aztec, NM 87410

District IV
PO Box 2088, Santa Fe, NM 87504-2088

State of New Mexico
Energy, Minerals & Natural Resources Department

OIL CONSERVATION DIVISION
PO Box 2088
Santa Fe, NM 87504-2088

Form C-102
Revised February 21, 1994
Instructions on back
Submit to Appropriate District Office
State Lease - 4 Copies
Fee Lease - 3 Copies

☐ AMENDED REPORT

WELL LOCATION AND ACREAGE DEDICATION PLAT

*API Number 30-039-26796		*Pool Code 72439	*Pool Name BLANCO PICTURED CLIFFS, SOUTH
*Property Code 016608	*Property Name SAN JUAN 28-7 UNIT		*Well Number 296
*OGRID No. 005073	*Operator Name CONOCO, INC.		*Elevation 6575'

¹⁰ Surface Location

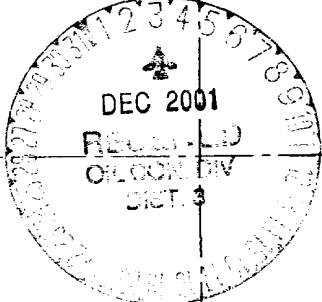
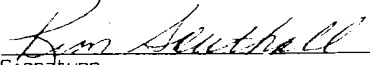
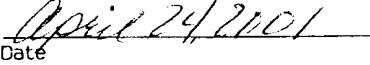

UL or lot no.	Section	Township	Range	Lot Idn	Feet from the	North/South line	Feet from the	East/West line	County
0	18	27N	7W		1020	SOUTH	1675	EAST	RIO ARriba

¹¹ Bottom Hole Location If Different From Surface

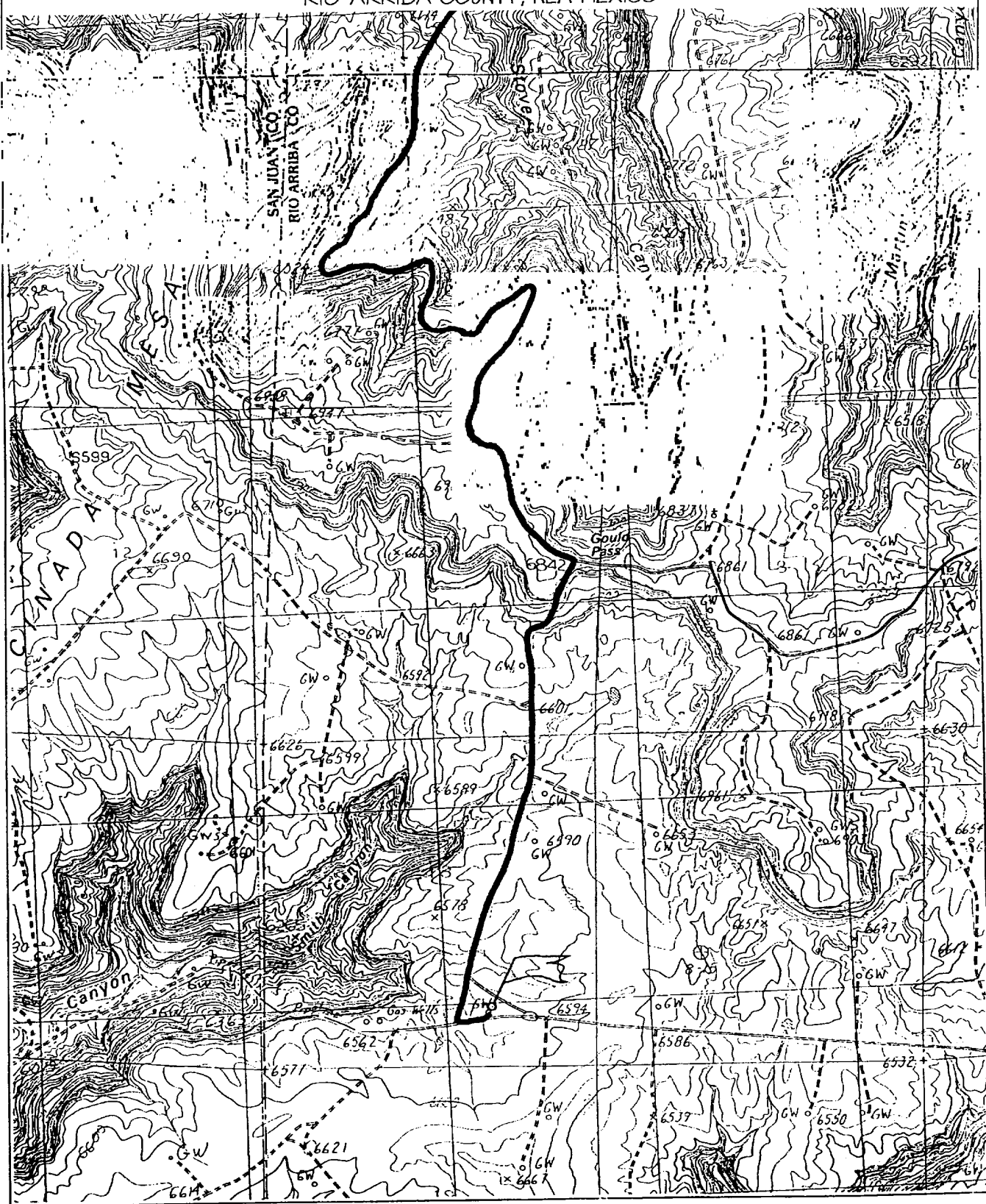
UL or lot no.	Section	Township	Range	Lot Idn	Feet from the	North/South line	Feet from the	East/West line	County

¹² Dedicated Acres 160.0 Acres (SE/4)	¹³ Joint or Infill	¹⁴ Consolidation Code	¹⁵ Order No.
---	-------------------------------	----------------------------------	-------------------------

NO ALLOWABLE WILL BE ASSIGNED TO THIS COMPLETION UNTIL ALL INTERESTS HAVE BEEN CONSOLIDATED OR A NON-STANDARD UNIT HAS BEEN APPROVED BY THE DIVISION

¹⁶ 1329.90' LOT 1	1325.94'	2651.88'	<div style="text-align: center;"></div>	¹⁷ OPERATOR CERTIFICATION I hereby certify that the information contained herein is true and complete to the best of my knowledge and belief.  Signature Kim Southall Printed Name Property Analyst Title  Date
5359.86' LOT 2				¹⁸ SURVEYOR CERTIFICATION I hereby certify that the well location shown on this plat was plotted from field notes of actual surveys made by me or under my supervision, and that the same is true and correct to the best of my belief. APRIL 16, 2001 Date of Survey Signature and Seal of Professional Surveyor  Certificate No. 6857
18				
LOT 3				
LOT 4	1331.22'	1328.58'	2657.82'	

CONOCO, INC. SAN JUAN 28-7 UNIT #296
1020' FSL & 1675' FEL, SECTION 18, T27N, R7W, N.M.P.M.
RIO ARriba COUNTY, NEW MEXICO



PROJECT PROPOSAL - New Drill / Sidetrack



Well : SAN JUAN 28-7 296 Lease : SAN JUAN 28-7 AFE # : AFE \$:
 Field Name : EAST 28-7 Rig : State : County : API # :
 Geoscientist : Layla Stiles Phone : (281) 293-3591 Prod. Engineer : Moody, Craig E. Phone : (281) 293 - 6559
 Res. Engineer : Valvatne, Christine K. Phone : Proj. Field Lead : Phone :

Primary Objective (Zones) :

Pool Pool Name
 UPT BLANCO P.C. SOUTH (PRORATED GAS)

Surface Location :

Latitude : 36.568506 Longitude : -107.6124 X : Y : Section : 18 Survey : 27N Abstract : 7W

Footage X : 1675 FEL Footage Y : 1020 FSL Elevation : 6575 (FT)

Bottom Hole Location :

Latitude : Longitude : X : Y : Section : Survey : Abstract :

Location Type : Year Round Start Date (Est.) : Completion Date : Date In Operation :

Formation Data : Assume KB = 6588 Units = FT

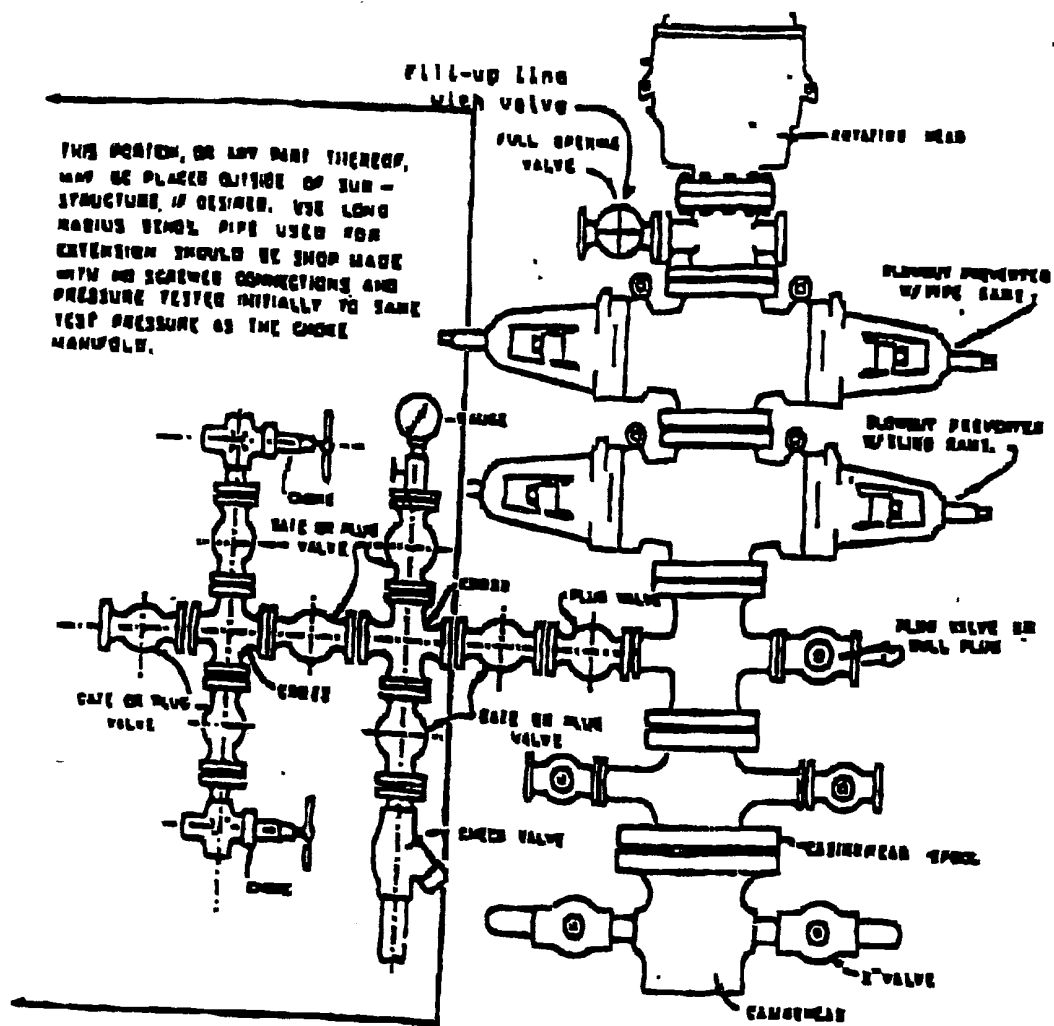
Formation Call & Casing Points	Depth (TVD in Ft)	SS (Ft)	Depletion (Yes/No)	BHP (PSIG)	BHT	Remarks
Surface Casing	251	6337	<input type="checkbox"/>			Severe lost circulation is possible. 7", 20 ppf, J-55, STC casing. Circulate cement to surface.
OJAM	2255	4333	<input type="checkbox"/>			Possible water flows"
KRLD	2388	4200	<input type="checkbox"/>			
FRLD	2581	4007	<input type="checkbox"/>			Possible gas
PCCF	2950	3638	<input type="checkbox"/>			
Total Depth	3349	3238	<input type="checkbox"/>			4 1/2", 10.5 ppf, J-55, STC casing. <u>Circulate cement a minimum of 100' inside the previous casing string.</u> No open hole logs. Cased hole TDT with GR to surface.

Logging Program :

Intermediate Logs : ☐ Log only if show ☐ GR / ILD ☐ Triple Combo
 TD Logs : ☐ Triple Combo ☐ Dipmeter ☐ RFT ☐ Sonic ☐ VSP ☒ TDT

Additional Information : Logging company to provide a sketch with all lengths, OD's & ID's of all tools prior to running in the hole.
 Cased hole TDT with GR to surface.

Comments :



BLOWOUT PREVENTER HOOKUP

Drilling contractors used in the San Juan Basin supply 3000 psi equipment, but cannot provide annular preventors because of sub-structure limitations. Maximum anticipated surface pressures for this well will not exceed the working pressure of the proposed BOP system. Please see the attached BOP diagram details 2000 psi equipment according to Onshore Order No. 2 even though the equipment will test to 3000 psi. The 2000 psi system allows deletion of the annular preventor and fulfills your requirements (note diagram No. 1). In addition, the following equipment will comprise the 3000 psi system:

1. Two rams with one blind and one pipe ram.
2. Kill line (2 inch maximum).
3. One kill line valve.
4. One choke line valve.
5. Two chokes (reference diagram No. 1).
6. Upper kelly cock valve with handle.
7. Safety valve and subs to fit all drill strings in use.
8. Two-inch minimum choke line.
9. Pressure gauge on choke manifold.
10. Fill-up line above the upper most preventor.
11. Rotating head.

Cathodic Protection System Description

Anode Bed Type	Deep Well	
Hole Size	8"	
Hole Depth	200' - 500'	As required to place anodes below moisture and in low resistance strata.
Surface Casing	8" Diam., \geq 20' Length, Cemented In Annular Space	When needed, casing will be installed at an adequate depth to control ground water flow. Casing will extend a minimum of 2' above grade, be surrounded by a concrete pad, and sealed with a PVC cap. Steel casing will be substituted when boulders are encountered.
Vent Pipe	1" Diam. PVC	Vent pipe will extend from bottom of hole, through top of casing cap, and sealed with a 1" perforated PVC cap.
Type Of Anodes	Cast Iron Or Graphite	
Number Of Anodes	8 - 20	Sufficient quantity to achieve a total anode bed resistance of < 1 ohm and a design life \geq 20 years.
Anode Bed Backfill	Lorasco SW Calcined Petroleum Coke Breeze	Installed from bottom of hole to 10' above top anode.
Anode Junction Box	8 - 20 Circuit Fiberglass Or Metal	Sealed to prevent insect & rodent intrusion.
Current Splitter Box	2 - 5 Circuit Metal	Sealed to prevent insect & rodent intrusion.
DC / AC Cable	DC: #2, #4, #6, #8 Stranded Copper (One Size Or Any Combination Of) With High Molecular Weight Polyethylene (HMWPE) Insulation. AC: #8 Stranded Copper HMWPE	18" depth in typical situation, 24" depth in roadway, & 36" depth in arroyos and streams. EXCEPTION: If trenching is in extremely hard substratum, depth will be 8 - 12" with cable installed in conduit. Installed above foreign pipelines if 1' clearance is available, if not, installed under foreign pipeline with 1' clearance (AC cable <i>always</i> installed under foreign pipeline in conduit).
Power Source	1) Rectifier 2) Solar Power Unit 3) Thermoelectric Generator	Choice of power source depending on availability of AC & other economic factors.
External Painting	Color to be selected according to BLM specifications.	Paint applied to any surface equipment associated with the CP system which can reasonably be painted.