

UNITED STATES
DEPARTMENT OF THE INTERIOR
BUREAU OF LAND MANAGEMENT

PERMIT

APPLICATION FOR PERMIT TO DRILL, DEEPEN, OR PLUG BACK

2001 OCT -5 PM 4:32

1a. Type of Work DRILL	5. Lease Number NM-03583 Unit Reporting Number 891001051A
1b. Type of Well GAS	6. If Indian, All. or Tribe
2. Operator BURLINGTON RESOURCES Oil & Gas Company	7. Unit Agreement Name San Juan 28-6 Unit
3. Address & Phone No. of Operator PO Box 4289, Farmington, NM 87499 (505) 326-9700	8. Farm or Lease Name San Juan 28-6 Unit 9. Well Number 236
4. Location of Well 1900' FSL, 1600' FWL Latitude 36° 36.06, Longitude 107° 30.65	10. Field, Pool, Wildcat So Blanco Pict Cliffs 11. Sec., Twn, Rge, Mer. (NMPM) K Sec. 6, T-27-N, R-6-W API # 30-039-26828
14. Distance in Miles from Nearest Town 40.2 miles from Blanco	12. County Rio Arriba
15. Distance from Proposed Location to Nearest Property or Lease Line 1600'	13. State NM
16. Acres in Lease	17. Acres Assigned to Well 157.12 SW/4
18. Distance from Proposed Location to Nearest Well, Drig, Compl, or Applied for on this Lease 226'	
19. Proposed Depth 3020'	20. Rotary or Cable Tools Rotary
21. Elevations (DF, FT, GR, Etc.) 6154' GR	22. Approx. Date Work will Start
23. Proposed Casing and Cementing Program See Operations Plan attached	DRILLING OPERATIONS AUTHORIZED ARE SUBJECT TO COMPLIANCE WITH ATTACHED "GENERAL REQUIREMENTS"
24. Authorized by: <u><i>[Signature]</i></u> Regulatory/Compliance Supervisor	<u>9-13-01</u> Date

PERMIT NO. _____ APPROVAL DATE 3/8/02
APPROVED BY *[Signature]* TITLE AEM DATE 3/8/02

Archaeological Report to be submitted
Threatened and Endangered Species Report to be submitted
NOTE: This format is issued in lieu of U.S. BLM Form 3160-3
Title 18 U.S.C. Section 1001, makes it a crime for any person knowingly and willfully to make to any department or agency of the United States any false, fictitious or fraudulent statements or presentations as to any matter within its jurisdiction.

NMOCD

✓
m

DISTRICT I
P.O. Box 1980, Hobbs, N.M. 88241-1980

State of New Mexico
Energy, Minerals & Natural Resources Department

Form C-102
Revised February 21, 1994
Instructions on back
Submit to Appropriate District Office
State Lease - 4 Copies
Fee Lease - 3 Copies

DISTRICT II
P.O. Drawer DD, Artesia, N.M. 88211-0719

OIL CONSERVATION DIVISION
P.O. Box 2088
Santa Fe, NM 87504-2088

DISTRICT III
1000 Rio Brazos Rd., Aztec, N.M. 87410

AMENDED REPORT

DISTRICT IV
PO Box 2088, Santa Fe, NM 87504-2088

WELL LOCATION AND ACREAGE DEDICATION PLAT

¹ API Number 30-039- <i>26828</i>	² Pool Code 72439	³ Pool Name South Blanco Pictured Cliffs
⁴ Property Code 7462	⁵ Property Name SAN JUAN 28-6 UNIT	
⁷ GRID No. 14538	⁸ Operator Name BURLINGTON RESOURCES OIL & GAS INC.	⁶ Well Number 236 ⁹ Elevation 6154

¹⁰ Surface Location

UL or lot no.	Section	Township	Range	Lot Idn	Feet from the	North/South line	Feet from the	East/West line	County
K	6	27-N	6-W		1900	SOUTH	1600	WEST	RIO ARRIBA

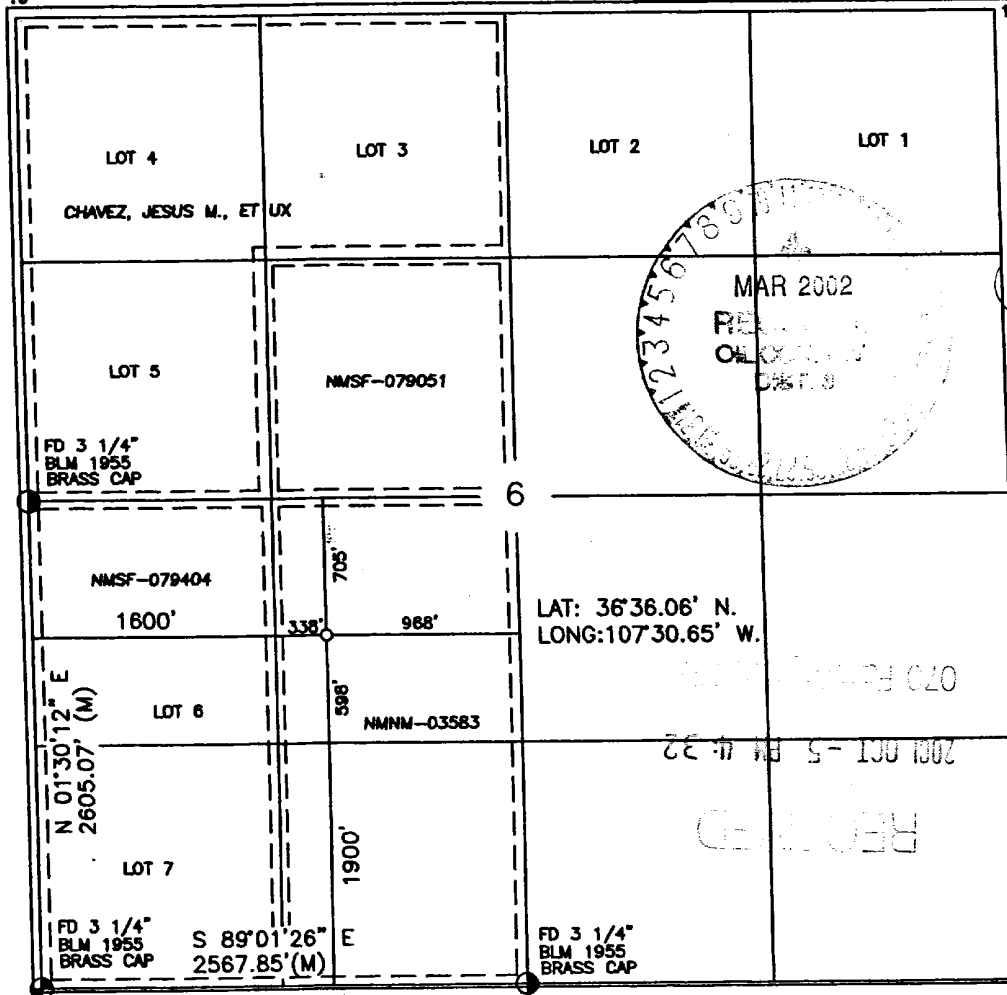
¹¹ Bottom Hole Location If Different From Surface

UL or lot no.	Section	Township	Range	Lot Idn	Feet from the	North/South line	Feet from the	East/West line	County

¹² Dedicated Acres 157.12	¹³ Joint or Infill	¹⁴ Consolidation Code	¹⁵ Order No.
---	-------------------------------	----------------------------------	-------------------------

NO ALLOWABLE WILL BE ASSIGNED TO THIS COMPLETION UNTIL ALL INTERESTS HAVE BEEN CONSOLIDATE OR A NON-STANDARD UNIT HAS BEEN APPROVED BY THE DIVISION

16



¹⁷ OPERATOR CERTIFICATION

I hereby certify that the information contained herein is true and complete to the best of my knowledge and belief

Peggy Cole
Signature
Peggy Cole
Printed Name
Regulatory Supervisor
Title
9-13-01
Date

¹⁸ SURVEYOR CERTIFICATION

I hereby certify that the well location shown on this plat was plotted from field notes of actual surveys made by or under my supervision and that the same is true and correct to the best of my knowledge and belief

8-6 ROY A. RUSH
Signature and Seal of Professional Surveyor
Date of Survey
8894
Certificate Number

BURLINGTON RESOURCES OIL & GAS INC.

SAN JUAN 28-6 UNIT 236

SW/4 SEC.6, T-27-N, R-6-W, N.M.P.M.

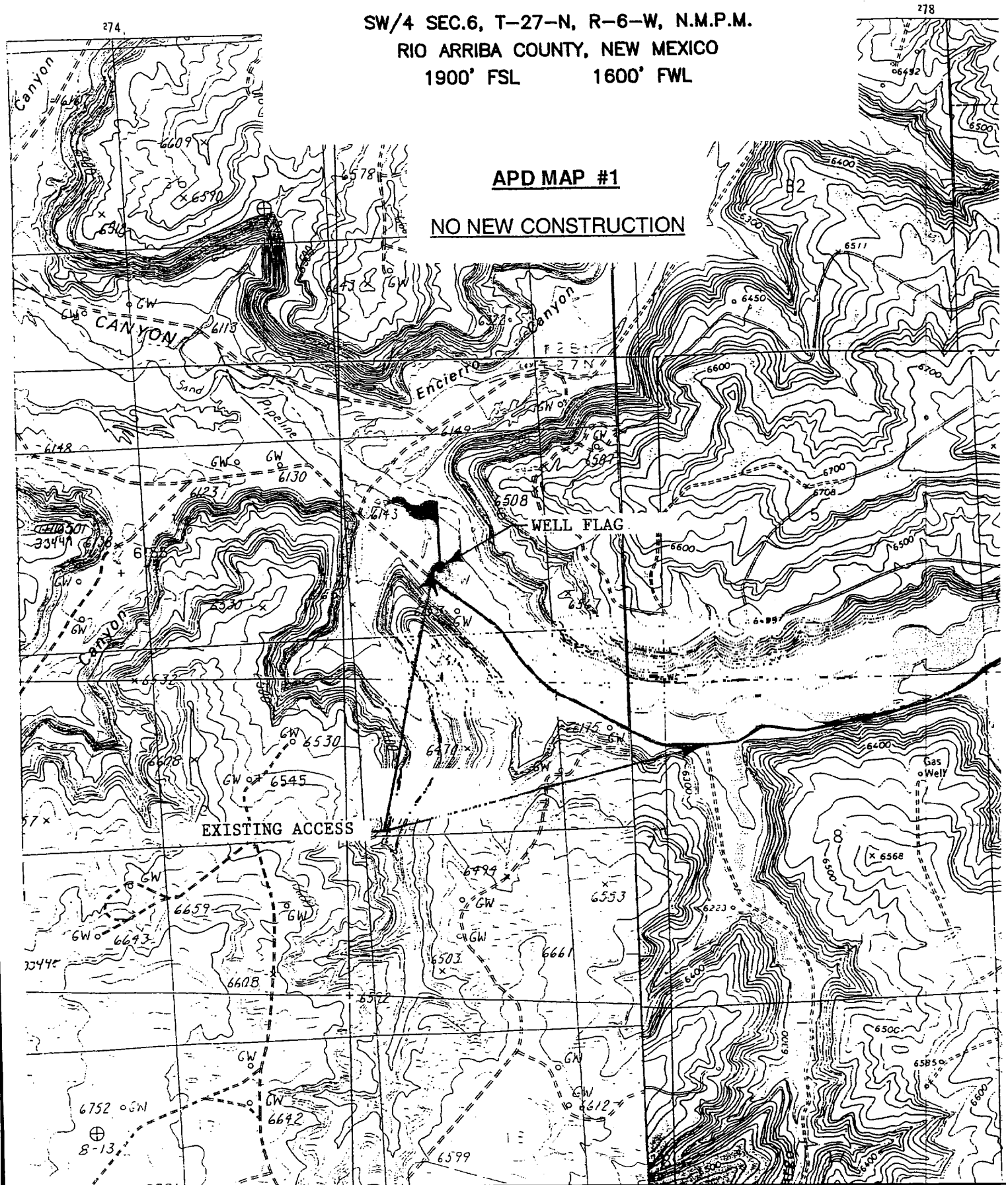
RIO ARRIBA COUNTY, NEW MEXICO

1900' FSL 1600' FWL

TERIOR
Y

APD MAP #1

NO NEW CONSTRUCTION



OPERATIONS PLAN

Well Name: San Juan 28-6 Unit #236
Location: 1900' FSL, 1600' FWL, Section 6, T-27-N, R-6-W
Rio Arriba County, New Mexico
Latitude 36° 3.06, Longitude 107° 30.65
Formation: South Blanco Pictured Cliffs
Elevation: 6154' GL

Formation:	Top	Bottom	Contents
Surface	San Jose	2126'	
Ojo Alamo	2126'	2181'	aquifer
Kirtland	2181'	2624'	gas
Fruitland	2624'	2816'	gas
Pictured Cliffs	2816'		gas
Total Depth	3020'		

Logging Program:

Open hole - Surface to TD - ARI, 2020' to TD - CNL-CDL
Cased hole - Surface to TD - CBL-CCL-GR

Coring Program: None

Mud Program:

Interval	Type	Weight	Vis.	Fluid Loss
0- 120'	Spud	8.4-9.0	40-50	no control
120-3020'	FW	8.4-9.0	32-45	no control

Casing Program (as listed, equivalent, or better):

Hole Size	Depth Interval	Csg. Size	Wt.	Grade
9 7/8"	0 - 120'	200' 7" <i>ST</i>	20.0#	J-55
6 1/4"	0 - 3020'	2 7/8"	6.5#	J-55

Float Equipment: 7" surface casing - saw tooth guide shoe.
Centralizers will be run in accordance with Onshore Order #2.

2 7/8" production casing - float shoe on bottom. Three centralizers run every other joint above shoe. Seven centralizers run every 3rd joint to the base of the Ojo Alamo @ 2181'. Two turbolizing type centralizers - one below and one into the base of the Ojo Alamo @ 2181'. Standard centralizers thereafter every fourth joint up to the base of the surface pipe.

Wellhead Equipment: 7" x 2 7/8" 2000 psi screw on independent wellhead.

Cementing:

7" surface casing - cement with 27 sx Class A, B Portland Type I, II cement (32 cu.ft. of slurry, ~~bring cement to surface through 3" line~~).
WOC 8 hrs. Test casing to 600 psi for 30 minutes.

2 7/8" production casing - Lead w/418 sx Premium Lite cement w/3% calcium chloride, 1/4 pps Flocele, 5 pps LCM-1, 0.4% FL-52, 0.4% SMS. Tail w/90 sx Type III cement w/1% calcium chloride, 1/4 pps Flocele, and 0.2% FL-52 (1015 cu.ft. of slurry, 100% excess to circulate to surface).

Note: If open hole logs are run, cement volumes will be based on 25% excess over caliper volumes.

Circulate cement to surface ST

BOP and tests:

Surface to TD - 11" 2000 psi (minimum double gate BOP stack (Reference Figure #1). Prior to drilling out surface casing, test rams to 600 psi/30 min.

Completion - 6" 2000 psi (minimum) double gate BOP stack (Reference Figure #2). Prior to completion operations, test rams and casing to 2000 psi/15 min.

From surface to TD - choke manifold (Reference Figure #3).

Pipe rams will be actuated to least once each day and blind rams actuated once each trip to test proper functioning. An upper kelly cock valve with handle and drill string safety valves to fit each drill string will be maintained and available on the rig floor.

BOP and tests (if a coiled tubing drilling rig is utilized):

Surface to TD: 7 1/16" 2000 psi (minimum) Torus annular BOP stack (Reference Figure #1B). Prior to drilling out surface casing, test annular BOP to 600 psi/30 minutes.

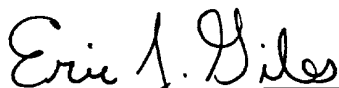
Completion: 7 1/16" 2000 psi (minimum) double gate BOP stack (Reference Figure #2). Prior to completion operations, test blind rams and casing to 1500 psi/30 minutes; all pipe rams and casing to 1500 psi/30 minutes each.

From surface to TD: choke manifold (Reference Figure #3).

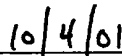
The annular BOP will be actuated to close on drill pipe (coiled tubing) at least once each day and to close on open hole once each trip to test proper functioning.

Additional information:

- * The Pictured Cliffs formation will be completed.
- * Anticipated pore pressure for the Pictured Cliffs is 500 psi.
- * This gas is dedicated.
- * The southwest quarter of Section 6 is dedicated to the Pictured Cliffs.



Drilling Engineer



Date