

UNITED STATES  
DEPARTMENT OF THE INTERIOR  
BUREAU OF LAND MANAGEMENT

RECEIVED

APPLICATION FOR PERMIT TO DRILL, DEEPEN, OR PLUG BACK

2001 OCT -5 PM 4:28

1a. Type of Work DRILL	5. Lease Number SF-079051 Unit Reporting Number 891001951A
1b. Type of Well GAS	6. If Indian, All. or Tribe
2. Operator <b>BURLINGTON RESOURCES</b> Oil & Gas Company	7. Unit Agreement Name San Juan 28-6 Unit
3. Address & Phone No. of Operator PO Box 4289, Farmington, NM 87499  (505) 326-9700	8. Farm or Lease Name San Juan 28-6 Unit 9. Well Number 230
4. Location of Well 1600' FNL, 930' FEL  Latitude 36° 36.3, Longitude 107° 30.1	10. Field, Pool, Wildcat So Blanco Pict Cliffs 11. Sec., Twn, Rge, Mer. (NMPM) H Sec. 6, T-28-N, R-6-W API # 30-039-26834
14. Distance in Miles from Nearest Town 32.4 miles from Blanco	12. County Rio Arriba
15. Distance from Proposed Location to Nearest Property or Lease Line 930'	13. State NM
16. Acres in Lease	17. Acres Assigned to Well 160.48
18. Distance from Proposed Location to Nearest Well, Drig, Compl, or Applied for on this Lease 88'	
19. Proposed Depth 3410'	20. Rotary or Cable Tools Rotary
21. Elevations (DF, FT, GR, Etc.) 6516' GR	22. Approx. Date Work will Start
23. Proposed Casing and Cementing Program See Operations Plan attached	DRILLING OPERATIONS AUTHORIZED ARE SUBJECT TO COMPLIANCE WITH ATTACHED "GENERAL REQUIREMENTS"
24. Authorized by: <u>[Signature]</u> Regulatory/Compliance Supervisor	Date <u>9-13-01</u>

PERMIT NO.

APPROVAL DATE

3/8/02

APPROVED BY

[Signature]

TITLE

AFM

DATE

3/8/02

Archaeological Report to be submitted

Threatened and Endangered Species Report to be submitted

NOTE: This format is issued in lieu of U.S. BLM Form 3160-3

Title 18 U.S.C. Section 1001, makes it a crime for any person knowingly and willfully to make to any department or agency of the United States any false, fictitious or fraudulent statements or presentations as to any matter within its jurisdiction.

NM000

DISTRICT I  
1625 N. French Dr., Hobbs, N.M. 88240

DISTRICT II  
611 South First, Artesia, N.M. 88210

DISTRICT III  
1000 Rio Brazos Rd., Artesia, N.M. 87410

DISTRICT IV  
2040 South Pacheco, Santa Fe, NM 87505

State of New Mexico  
Energy, Minerals & Natural Resources Department

Form C-102  
Revised August 15, 2000

Submit to Appropriate District Office  
State Lease - 4 Copies  
Fee Lease - 3 Copies

OIL CONSERVATION DIVISION

2040 South Pacheco  
Santa Fe, NM 87505

☐ AMENDED REPORT

WELL LOCATION AND ACREAGE DEDICATION PLAT

<sup>1</sup> API Number 30-039- <b>26834</b>	<sup>2</sup> Pool Code 72439	<sup>3</sup> Pool Name South Blanco Pictured Cliffs
<sup>4</sup> Property Code 7462	<sup>5</sup> Property Name SAN JUAN 28-6 UNIT	<sup>6</sup> Well Number 230
<sup>7</sup> OGED No. 14538	<sup>8</sup> Operator Name BURLINGTON RESOURCES OIL AND GAS, INC.	<sup>9</sup> Elevation 6516'

<sup>10</sup> Surface Location

UL or lot no.	Section	Township	Range	Lot Idn	Feet from the	North/South line	Feet from the	East/West line	County
H	6	27-N	6-W		1600'	NORTH	930'	EAST	RIO ARriba

<sup>11</sup> Bottom Hole Location If Different From Surface

UL or lot no.	Section	Township	Range	Lot Idn	Feet from the	North/South line	Feet from the	East/West line	County
<sup>12</sup> Dedicated Acres 160.48			<sup>13</sup> Joint or Infill		<sup>14</sup> Consolidation Code		<sup>15</sup> Order No.		

NO ALLOWABLE WILL BE ASSIGNED TO THIS COMPLETION UNTIL ALL INTERESTS HAVE BEEN CONSOLIDATED  
OR A NON-STANDARD UNIT HAS BEEN APPROVED BY THE DIVISION

16	FD 2 1/2" G.L.O. BC 1914	S 89-56-27 W 2627.65' (M)	FD 2 1/2" G.L.O. BC 1914	17	<b>OPERATOR CERTIFICATION</b> I hereby certify that the information contained herein is true and complete to the best of my knowledge and belief.  Signature: <u>Peggy Cole</u> Printed Name: <u>Peggy Cole</u> Regulatory Supervisor Title: <u>9-13-01</u> Date: <u>9-13-01</u>	
LOT 4	LOT 3	LOT 2 JESUS M. CHAVEZ ET UX	LOT 1	<b>18 SURVEYOR CERTIFICATION</b> I hereby certify that the well location shown on this plat was plotted from field notes of actual surveys made by me or under my supervision, and that the same is true and correct to the best of my belief.  Date of Survey: <u>8-1-01</u> Signature and Seal of Professional Surveyor: <u>ROY A. RUSH</u> 8894 Certification Number: <u>8894</u>		
LOT 5		LAT: 36°36.3' N. LONG: 107°30.1' W. NMSF-079051				
LOT 6						
LOT 7						
				NMNM-03583		
				FD 2 1/2" B.L.M. BC 1955 S 00-42 W FROM CALC'D CORNER		

BURLINGTON RESOURCES OIL & GAS, INC.

SAN JUAN 28-6 UNIT #230

NE/4 SEC. 6, T-27-N, R-6-W, N.M.P.M.

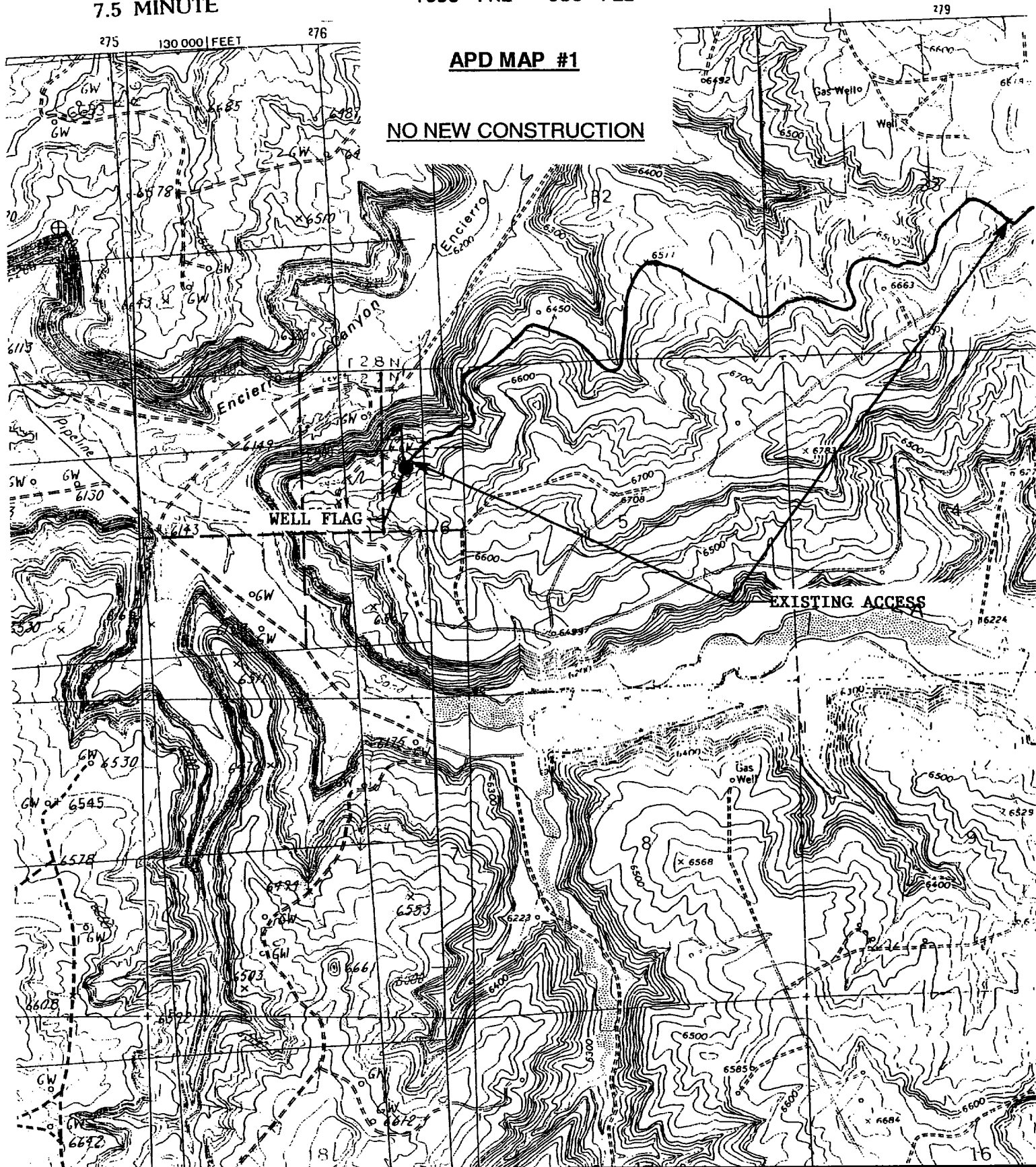
RIO ARRIBA COUNTY, NEW MEXICO

1600' FNL 930' FEL

GOULD  
7.5 MINUTE

APD MAP #1

NO NEW CONSTRUCTION



## OPERATIONS PLAN

**Well Name:** San Juan 28-6 Unit #230  
**Location:** 1600' FNL, 930' FEL, Section 6, T-27-N, R-6-W  
Rio Arriba County, New Mexico  
Latitude 36° 36.3, Longitude 107° 30.1  
**Formation:** South Blanco Pictured Cliffs  
**Elevation:** 6516' GL

Formation:	Top	Bottom	Contents
Surface	San Jose	2517'	
Ojo Alamo	2517'	2568'	aquifer
Kirtland	2568'	2986'	gas
Fruitland	2986'	3208'	gas
Pictured Cliffs	3208'		gas
Total Depth	3410'		

**Logging Program:**

Open hole - Surface to TD - ARI, 2410' to TD - CNL-CDL  
Cased hole - Surface to TD - CBL-CCL-GR

**Coring Program:** None

**Mud Program:**

Interval	Type	Weight	Vis.	Fluid Loss
0- 120'	Spud	8.4-9.0	40-50	no control
120-3410'	FW	8.4-9.0	32-45	no control

**Casing Program (as listed, equivalent, or better):**

Hole Size	Depth Interval	Csg Size	Wt.	Grade
9 7/8"	0 - 120'	4" J-55	20.0#	J-55
6 1/4"	0 - 3410'	2 7/8" J-55	6.5#	J-55

**Float Equipment:** 7" surface casing - saw tooth guide shoe.  
Centralizers will be run in accordance with Onshore Order #2.

2 7/8" production casing - float shoe on bottom. Three centralizers run every other joint above shoe. Seven centralizers run every 3rd joint to the base of the Ojo Alamo @ 2568'. Two turbolizing type centralizers - one below and one into the base of the Ojo Alamo @ 2568'. Standard centralizers thereafter every fourth joint up to the base of the surface pipe.

**Wellhead Equipment:** 7" x 2 7/8" 2000 psi screw on independent wellhead.

**Cementing:**

7" surface casing - cement with 27 sx Class A, B Portland Type I, II cement (32 cu.ft. of slurry, ~~bring cement to surface through 7" line~~).  
WOC 8 hrs. Test casing to 600 psi for 30 minutes.

2 7/8" production casing - Lead w/479 sx Premium Lite cement w/3% calcium chloride, 1/4 pps Flocele, 5 pps LCM-1, 0.4% FL-52, 0.4% SMS. Tail w/90 sx Type III cement w/1% calcium chloride, 1/4 pps Flocele, and 0.2% FL-52 (1146 cu.ft. of slurry, 100% excess to circulate to surface).

Note: If open hole logs are run, cement volumes will be based on 25% excess over caliper volumes.

**BOP and tests:**

Surface to TD - 11" 2000 psi (minimum double gate BOP stack (Reference Figure #1). Prior to drilling out surface casing, test rams to 600 psi/30 min.

Completion - 6" 2000 psi (minimum) double gate BOP stack (Reference Figure #2). Prior to completion operations, test rams and casing to 2000 psi/15 min.

From surface to TD - choke manifold (Reference Figure #3).

Pipe rams will be actuated to least once each day and blind rams actuated once each trip to test proper functioning. An upper kelly cock valve with handle and drill string safety valves to fit each drill string will be maintained and available on the rig floor.

**BOP and tests (if a coiled tubing drilling rig is utilized):**

Surface to TD: 7 1/16" 2000 psi (minimum) Torus annular BOP stack (Reference Figure #1B). Prior to drilling out surface casing, test annular BOP to 600 psi/30 minutes.

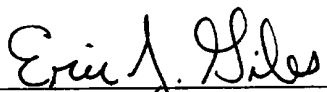
Completion: 7 1/16" 2000 psi (minimum) double gate BOP stack (Reference Figure #2). Prior to completion operations, test blind rams and casing to 1500 psi/30 minutes; all pipe rams and casing to 1500 psi/30 minutes each.

From surface to TD: choke manifold (Reference Figure #3).

The annular BOP will be actuated to close on drill pipe (coiled tubing) at least once each day and to close on open hole once each trip to test proper functioning.

**Additional information:**

- \* The Pictured Cliffs formation will be completed.
- \* Anticipated pore pressure for the Pictured Cliffs is 500 psi.
- \* This gas is dedicated.
- \* The northeast quarter of Section 6 is dedicated to the Pictured Cliffs.

  
\_\_\_\_\_  
Drilling Engineer

10/4/01  
\_\_\_\_\_  
Date