

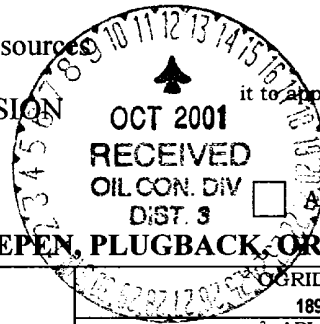
District I
1625 N. French Dr., Hobbs, NM 88240
District II
811 South First, Artesia, NM 88210
District III
1000 Rio Brazos Rd., Aztec, NM 87410
District IV
2040 South Pacheco, Santa Fe, NM 87505

State of New Mexico
Energy, Minerals and Natural Resources

Form C-101
Revised March 17, 1999

OIL CONSERVATION DIVISION

2040 South Pacheco
Santa Fe, NM 87505



Submit to appropriate District Office
State Lease - 6 Copies
Fee Lease - 5 Copies

APPLICATION FOR PERMIT TO DRILL, RE-ENTER, DEEPEN, PLUGBACK, OR ADD A ZONE

¹ Operator name and Address PURE RESOURCES P.O. BOX 850 BLOOMFIELD, NM 87413		² GRID Number 189071
⁴ Property Code 026629		³ API Number 30-039-76836
⁵ Property Name RINCON UNIT		⁶ Well Number 156R

⁷ Surface Location

UI or lot no.	Section	Township	Range	Lot Idn	Feet from the	orth/South Lin	Feet from the	East/West Line	County
K	16	27-N	6-W		1965'	South	1970'	West	RIO ARRIBA

⁸ Proposed Bottom Hole Location If Different From Surface

UI or lot no.	Section	Township	Range	Lot Idn	Feet from the	orth/South Lin	Feet from the	East/West Line	County
⁹ Proposed Pool 1 BASIN DAKOTA					¹⁰ Proposed Pool 2 BLANCO MESA VERDE				

¹¹ Work Type Code N	¹² Well Type Code M	¹³ Cable/Roatary R	¹⁴ lease Type Code S	¹⁵ Ground Level Elevation 6624'
¹⁶ Multiple YES	¹⁷ Proposed Depth 7750'	¹⁸ Formation DAKOTA	¹⁹ Contractor BEARCAT	²⁰ Spud Date ASAP

²¹ Proposed Casing and Cement Program

Hole Size	Casing Size	Casing weight/foot	Setting Depth	Sacks of Cement	Estimated TOC
12-1/4"	9-5/8"	32.3#	350'	285SXS	CIRCULATED
8-3/4"	7"	20#	2600'	350SXS	CIRCULATED
6-1/4"	4-1/2"	11.6#	7750'	600SXS	INSIDE OF 7"

²² Describe the proposed program. If this application is to DEEPEN or PLUG BACK. Give the data on the present productive zone and proposed new productive zone. Describe the blowout prevention program, if any. Use additional sheets if necessary

Pure Resources is seeking permit approval for pad, pipeline and cathodic ROW. **MIRU DRILLING RIG.**
 SPUD 12-1/4" HOLE AND DRILL W/FLUID TO ±350'. RUN AND CMT 9-5/8" CASING W/285SXS B CMT +2% CACL2 + 1/4# /SACK CELLO-FLAKE. 14.5 PPG.
 DRILL 8-3/4" HOLE W/MUD AND TD THROUGH OJO ALAMO AND INTO KIRTLAND SAND. CMT 7" CSG W/300SXS B 35:65 POZ + 8% GEL + 2% CACL2 + .25LBS/SX CELLO-FLAKE F/B 50 SXS B + 2% CACL2. 14.5 PPG. DRILL 6-1/4" HOLE W/AIR/ NITROGEN AND HAMMER TO TD. RUN AND CMT 4-1/2 " CSG TO TD W/600 SXS POZ + 10# CSE + 1/4# CS + .2% CD-32 + .65% FL-62 + 6% GEL +3% KCL @12.5PPG. TIE CMT INTO INTERMEDIATE. DRILL OUT WELL AND RUN CNL-CCL-GR. COMPLETE WELL IN DAKOTA AND MESA VERDE FORMATIONS W/NITROFIED FRACS. DOWNHOLE COMMINGLE.

²³ I hereby certify that the information given above is true and complete to the best of my knowledge and belief.

Signature: *Michael C. Phillips*

Printed name: MICHEAL C. PHILLIPS

Title: **SAN JUAN BASIN FOREMAN**

Date: 10/10/01 Phone: (505) 632 - 1811

OIL CONSERVATION DIVISION

Approved by: *[Signature]*

Title: **DEPUTY OIL & GAS INSPECTOR, DIST. #3**

Approval Date: **OCT 12 2001** Expiration Date: **OCT 12 2002**

Conditions of Approval

Attached

4

DISTRICT I
1625 N. French Dr., Hobbs, N.M. 88240

State of New Mexico
Energy, Minerals & Natural Resources Department

Form C-102
Revised August 15, 2000

DISTRICT II
811 South First, Artesia, N.M. 88210

Submit to Appropriate District Office
State Lease - 4 Copies
Fee Lease - 3 Copies

DISTRICT III
1000 Rio Brazos Ed., Aztec, N.M. 87410

OIL CONSERVATION DIVISION

2040 South Pacheco
Santa Fe, NM 87505

AMENDED REPORT

DISTRICT IV
2040 South Pacheco, Santa Fe, NM 87505

WELL LOCATION AND ACREAGE DEDICATION PLAT

¹ API Number 30-039-26836	² Pool Code 72319	³ Pool Name Blanco Mesa Verde
⁴ Property Code 26629	⁵ Property Name RINCON UNIT	
⁶ OGED No. 189071	⁷ Operator Name PURE RESOURCES	⁸ Well Number 156R ⁹ Elevation 6624'

¹⁰ Surface Location

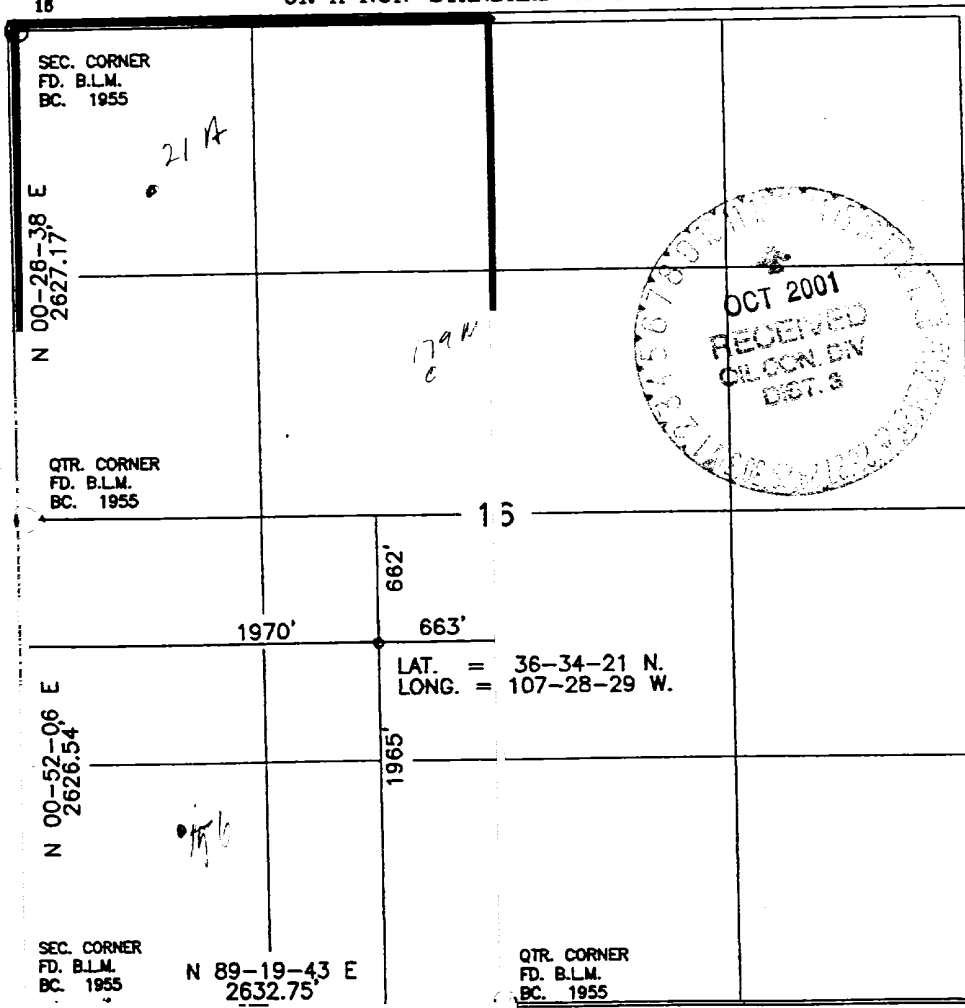
UL or lot no.	Section	Township	Range	Lot kin	Feet from the	North/South line	Feet from the	East/West line	County
K	16	27-N	6-W		1965	SOUTH	1970	WEST	RIO ARRIBA

¹¹ Bottom Hole Location If Different From Surface

UL or lot no.	Section	Township	Range	Lot idn	Feet from the	North/South line	Feet from the	East/West line	County
¹² Dedicated Acres 310 1/2			¹³ Joint or Infill		¹⁴ Consolidation Code		¹⁵ Order No.		

NO ALLOWABLE WILL BE ASSIGNED TO THIS COMPLETION UNTIL ALL INTERESTS HAVE BEEN CONSOLIDATED OR A NON-STANDARD UNIT HAS BEEN APPROVED BY THE DIVISION

16



17 OPERATOR CERTIFICATION

I hereby certify that the information contained herein is true and complete to the best of my knowledge and belief.

Michael C. Phillips
Signature

Micheal C. Phillips
Printed Name
San Juan Basin Drilling/
Production Foreman
Title

Oct. 2nd, 2001
Date

18 SURVEYOR CERTIFICATION

I hereby certify that the well location shown on this plat was plotted from field notes of actual surveys made by me or under my supervision and that the same is true and correct to the best of my belief.

3-6
Date of Survey

[Signature]
Signature and Seal of Professional Surveyor

8894
Certificate Number

DISTRICT I
1625 W. French Dr., Hobbs, N.M. 88240

State of New Mexico
Energy, Minerals & Natural Resources Department

Form C-102
Revised August 15, 2000

DISTRICT II
811 South First, Artesia, N.M. 88210

Submit to Appropriate District Office
State Lease - 4 Copies
Fee Lease - 3 Copies

DISTRICT III
1000 Rio Brazos Ed., Aztec, N.M. 87410

OIL CONSERVATION DIVISION

2040 South Pacheco
Santa Fe, NM 87505

AMENDED REPORT

DISTRICT IV
2040 South Pacheco, Santa Fe, NM 87505

WELL LOCATION AND ACREAGE DEDICATION PLAT

*API Number 30-039 26836		*Pool Code 71599	*Pool Name Basin Dakota
*Property Code 26629	*Property Name RINCON UNIT		*Well Number 156R
*OGRD No. 189071	*Operator Name PURE RESOURCES		*Elevation 6624'

¹⁰ Surface Location

UL or lot no.	Section	Township	Range	Lot Idn	Feet from the	North/South line	Feet from the	East/West line	County
K	16	27-N	6-W		1965	SOUTH	1970	WEST	RIO ARRIBA

¹¹ Bottom Hole Location If Different From Surface

UL or lot no.	Section	Township	Range	Lot Idn	Feet from the	North/South line	Feet from the	East/West line	County
*Dedicated Acres 320.5/2			*Joint or Infill		*Consolidation Code		*Order No.		

NO ALLOWABLE WILL BE ASSIGNED TO THIS COMPLETION UNTIL ALL INTERESTS HAVE BEEN CONSOLIDATED OR A NON-STANDARD UNIT HAS BEEN APPROVED BY THE DIVISION

¹⁶

SEC. CORNER
FD. B.L.M.
BC. 1955

N 00-26-38 E
2627.17'

QTR. CORNER
FD. B.L.M.
BC. 1955

N 00-52-06 E
2626.54'

N 89-19-43 E
2632.75'

1970'

663'

662'

1965'

LAT. = 36-34-21 N.
LONG. = 107-28-29 W.

QTR. CORNER
FD. B.L.M.
BC. 1955

¹⁷ OPERATOR CERTIFICATION

I hereby certify that the information contained herein is true and complete to the best of my knowledge and belief.

Michael C. Phillips
Signature

Micheal C. Phillips
Printed Name

San Juan Basin Drilling/
Production Foreman
Title

Oct. 2nd, 2001
Date

¹⁸ SURVEYOR CERTIFICATION

I hereby certify that the well location shown on this plat was plotted from field notes of actual surveys made by me or under my supervision, and that the same is true and correct to the best of my knowledge and belief.

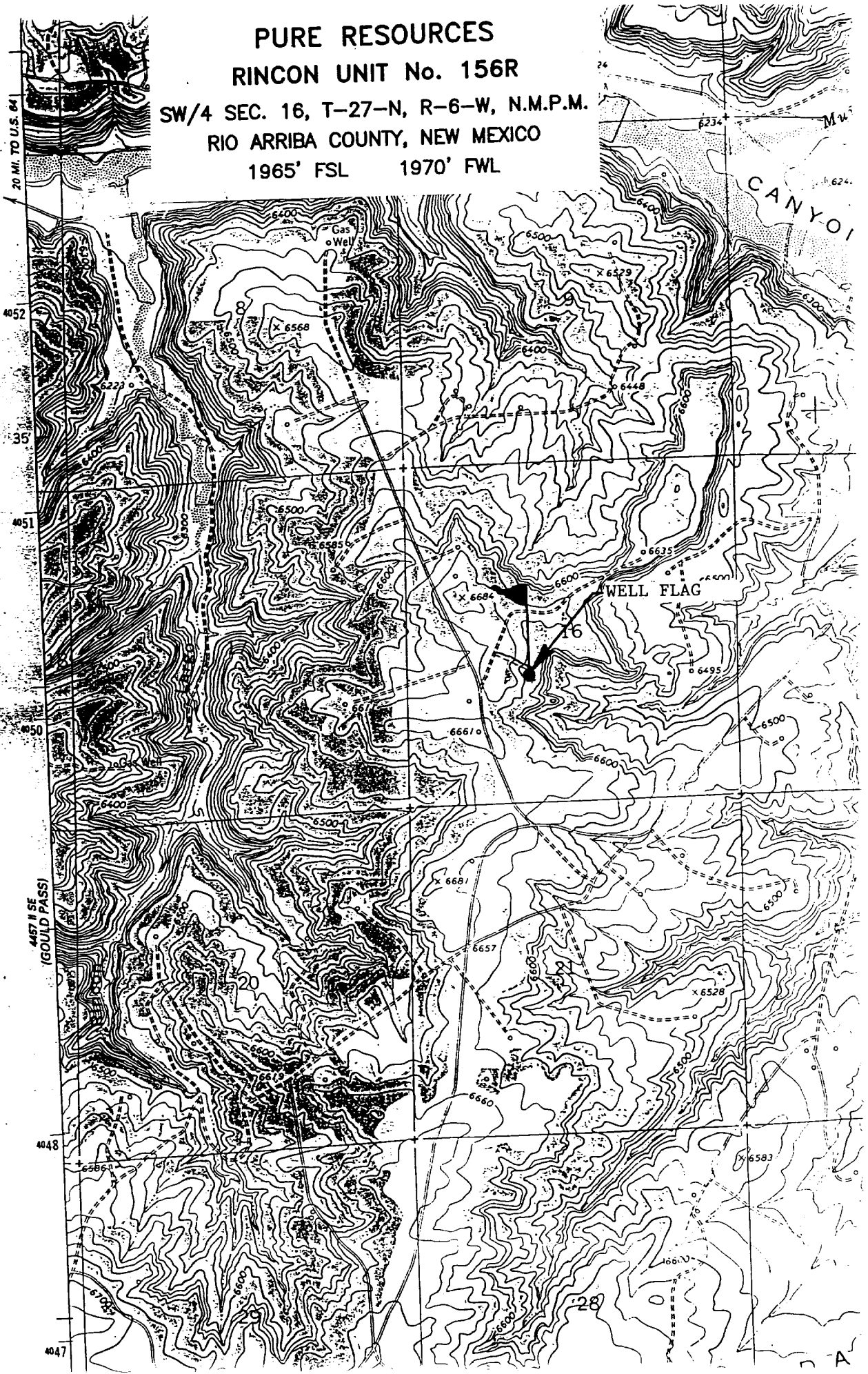
3-6
Date of Survey

[Signature]
Signature and Seal of Professional Surveyor

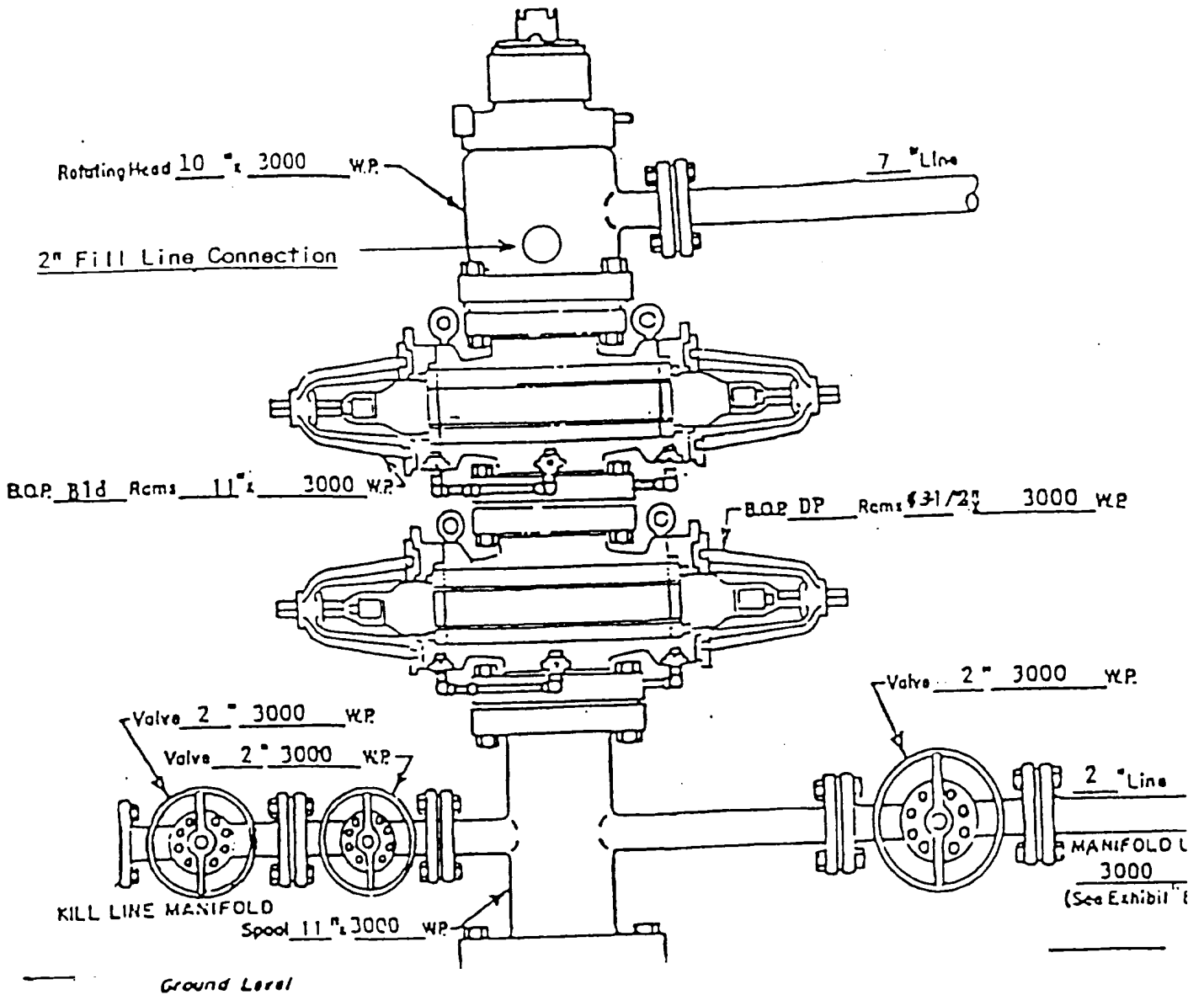
8894
Certificate Number

PURE RESOURCES RINCON UNIT No. 156R

SW/4 SEC. 16, T-27-N, R-6-W, N.M.P.M.
RIO ARriba COUNTY, NEW MEXICO
1965' FSL 1970' FWL



RINCON UNIT WELLS
 RINCON FIELD
 RIO ARRIBA COUNTY, NEW MEXICO

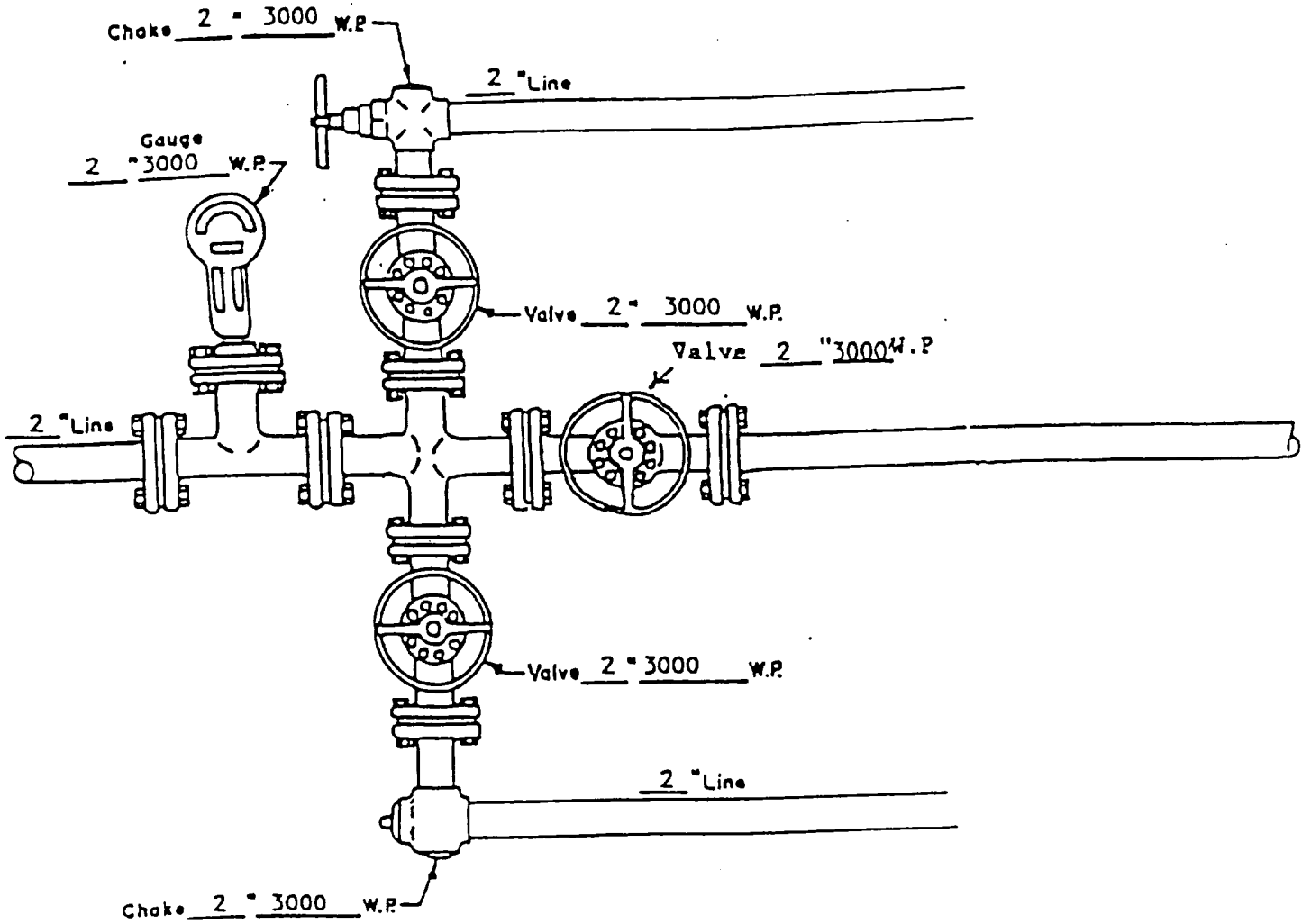


WELL HEAD B.O.P.
 3000 # W.P.

Manual
 Hydraulic

NOTE: Although 3000 psi BOP equipment will be used, equipment determination and line sizing are based on the requirements for 2000 psi BOP equipment due to the known drilling and reservoir conditions.

RINCON UNIT WELLS
 RINCON FIELD
 RIO ARRIBA COUNTY, NEW MEXICO



MANIFOLD
 3000 # W.P.

- Manual
- Hydraulic