

UNITED STATES
DEPARTMENT OF THE INTERIOR
BUREAU OF LAND MANAGEMENT

RECEIVED

APPLICATION FOR PERMIT TO DRILL, DEEPEN, OR PLUG BACK

2001 OCT 23 AM 11:30

1a. Type of Work DRILL	5. Lease Number NM-03583 Unit Reporting Number 891001051A	
1b. Type of Well GAS	6. If Indian, All. or Tribe	
2. Operator BURLINGTON RESOURCES Oil & Gas Company	7. Unit Agreement Name San Juan 28-6 Unit	
3. Address & Phone No. of Operator PO Box 4289, Farmington, NM 87498 (505) 326-9700	8. Farm or Lease Name San Juan 28-6 Unit Well Number 229	
4. Location of Well 1215' FSL, 1030' FWL Latitude 36° 36.0, Longitude 107° 20.0	9. Field, Pool, Wildcat So Blanco Pict Cliffs 10. Sec., Twn, Rge, Mer. (NMPM) Sec. 5, T-27-N, R-6-W API # 30-039-26850	
14. Distance in Miles from Nearest Town 32 miles from Blanco	12. County Rio Arriba	13. State NM
15. Distance from Proposed Location to Nearest Property or Lease Line 1030'	17. Acres Assigned to Well 160	
16. Acres in Lease		
18. Distance from Proposed Location to Nearest Well, Drig, Compl, or Applied for on this Lease 423'	This action is subject to technical and procedural review pursuant to 43 CFR 3155.3 and appeal pursuant to 43 CFR 3155.4.	
19. Proposed Depth 3430'	20. Rotary or Cable Tools Rotary	
21. Elevations (DF, FT, GR, Etc.) 6505' GR	22. Approx. Date Work will Start	
23. Proposed Casing and Cementing Program See Operations Plan attached	DRILLING OPERATIONS AUTHORIZED ARE SUBJECT TO COMPLIANCE WITH ATTACHED "GENERAL REQUIREMENTS"	
24. Authorized by: <u>[Signature]</u> Regulatory/Compliance Supervisor	Date <u>10-11-01</u>	

PERMIT NO.

APPROVAL DATE

2/28/02

APPROVED BY

TITLE

AFM

DATE

2/28/02

Archaeological Report to be submitted

Threatened and Endangered Species Report to be submitted

NOTE: This format is issued in lieu of U.S. BLM Form 3160-3

Title 18 U.S.C. Section 1001, makes it a crime for any person knowingly and willfully to make to any department or agency of the United States any false, fictitious or fraudulent statements or presentations as to any matter within its jurisdiction.

AMOC

--	--	--

DISTRICT I
1625 N. French Dr., Hobbs, N.M. 88240

DISTRICT II
811 South First, Artesia, N.M. 88210

DISTRICT III
1000 Rio Brazos Rd., Aztec, N.M. 87410

DISTRICT IV
2040 South Pacheco, Santa Fe, NM 87505

State of New Mexico
Energy, Minerals & Natural Resources Department

OIL CONSERVATION DIVISION

2040 South Pacheco
Santa Fe, NM 87505

Form C-102

Revised August 15, 2000

Submit to Appropriate District Office
State Lease - 4 Copies
Fee Lease - 3 Copies

☐ AMENDED REPORT

WELL LOCATION AND ACREAGE DEDICATION PLAT

*API Number 30-039- 26850		*Pool Code 72439	*Pool Name South Blanco Pictured Cliffs
*Property Code 7462	*Property Name SAN JUAN 28-6 UNIT		*Well Number 229
*OGRID No. 14538	*Operator Name BURLINGTON RESOURCES OIL AND GAS, INC.		*Elevation 6505'

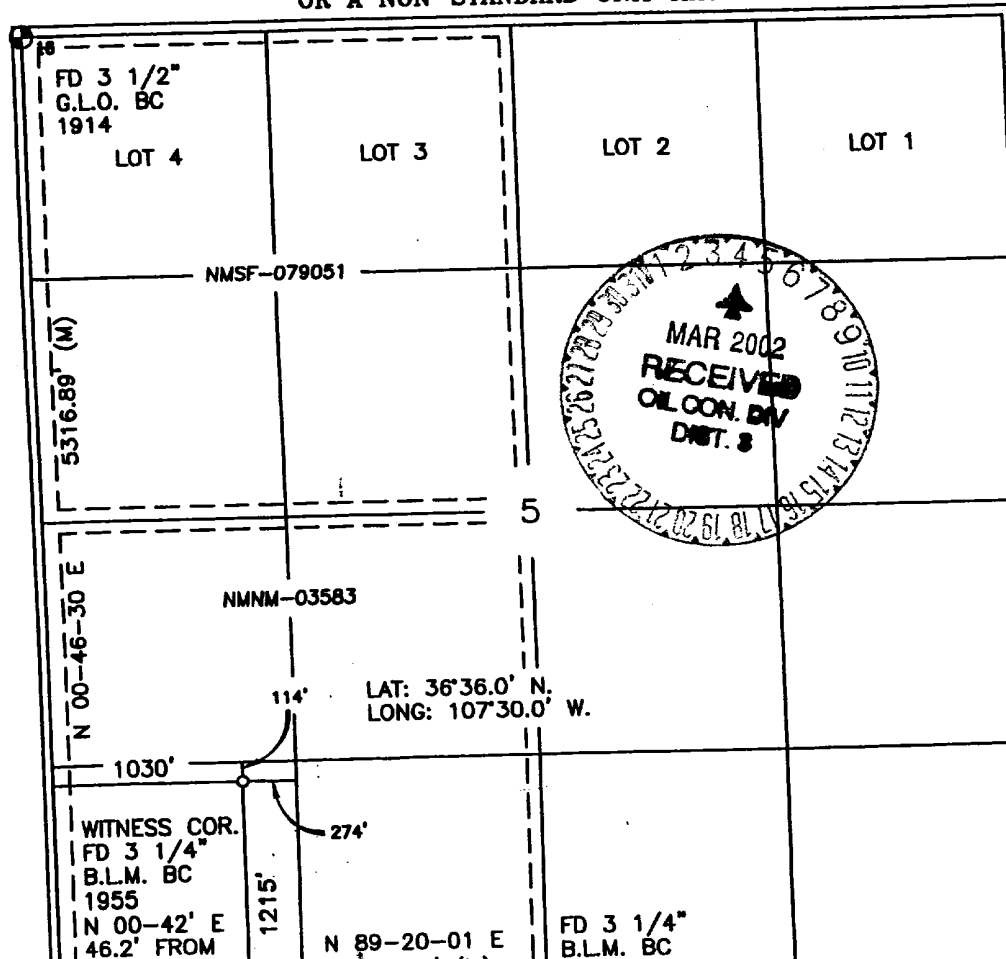
¹⁰ Surface Location

UL or lot no.	Section	Township	Range	Lot Idn	Feet from the	North/South line	Feet from the	East/West line	County
M	5	27-N	6-W		1215'	SOUTH	1030'	WEST	RIO ARriba

¹¹ Bottom Hole Location If Different From Surface

UL or lot no.	Section	Township	Range	Lot Idn	Feet from the	North/South line	Feet from the	East/West line	County
*Dedicated Acres 160			*Joint or Infill		*Consolidation Code		*Order No.		

NO ALLOWABLE WILL BE ASSIGNED TO THIS COMPLETION UNTIL ALL INTERESTS HAVE BEEN CONSOLIDATED
OR A NON-STANDARD UNIT HAS BEEN APPROVED BY THE DIVISION



17 OPERATOR CERTIFICATION

I hereby certify that the information contained herein is true and complete to the best of my knowledge and belief.

Peggy Cole
Signature
Peggy Cole
Printed Name
Regulatory Supervisor
Title
10-11-01
Date

18 SURVEYOR CERTIFICATION

I hereby certify that the well location shown on this was plotted from field notes of actual surveys made by me or under my supervision, and that the same is true and correct to the best of my knowledge and belief.

8-1-01
Date of Survey
ROY A. RUSH
Signature and Seal of Professional Surveyor
8894
Certificate Number

BURLINGTON RESOURCES OIL & GAS, INC.

SAN JUAN 28-6 UNIT #229

SW/4 SEC. 5, T-27-N, R-6-W, N.M.P.M.

RIO ARriba COUNTY, NEW MEXICO

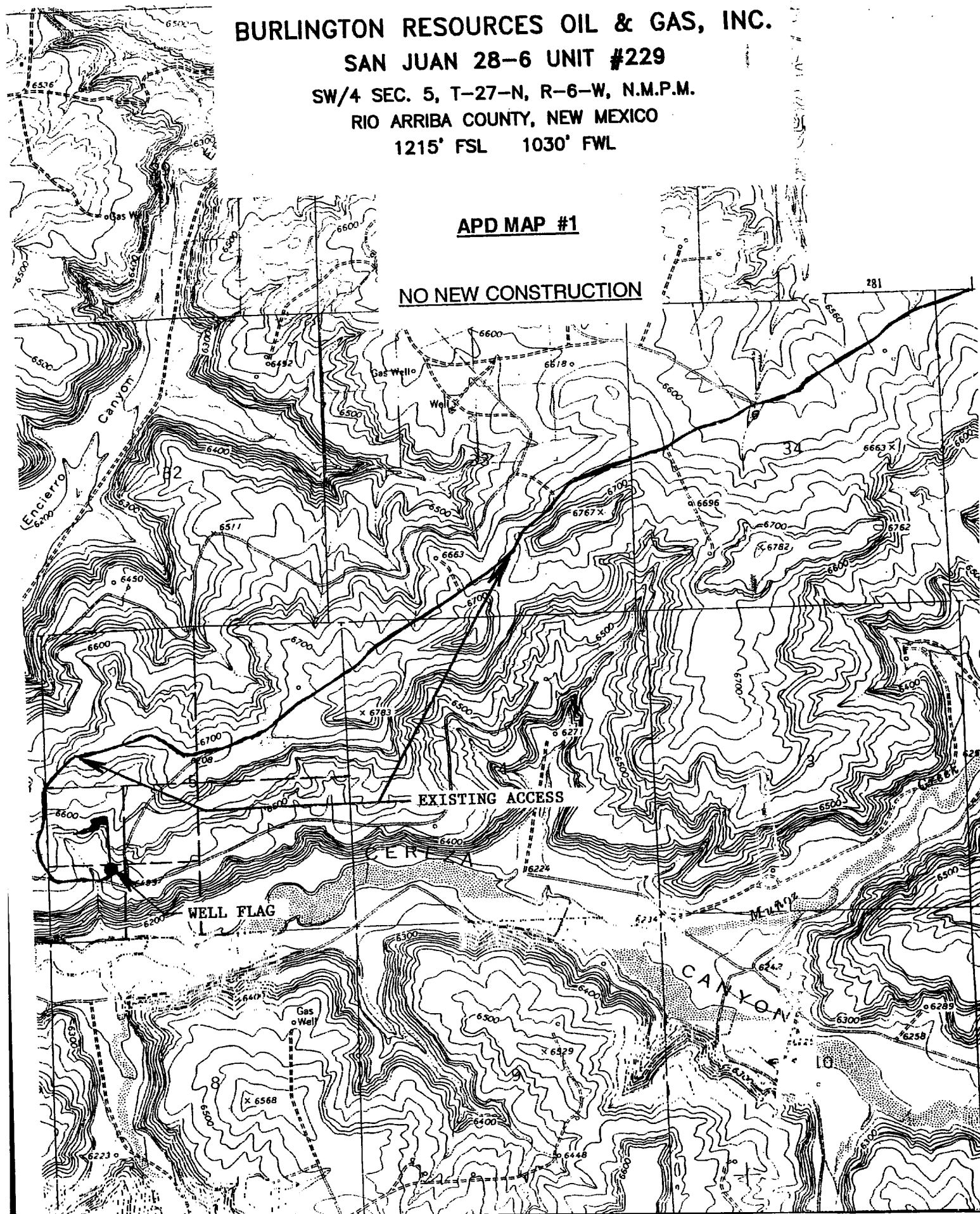
1215' FSL 1030' FWL

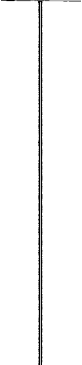
APD MAP #1

NO NEW CONSTRUCTION

EXISTING ACCESS

WELL FLAG





OPERATIONS PLAN

Well Name: San Juan 28-6 Unit #229
Location: 1215' FSL, 1030' FWL, Section 5, T-27-N, R-6-W
Rio Arriba County, New Mexico
Latitude 36° 36.0, Longitude 107° 30.0
Formation: South Blanco Pictured Cliffs
Elevation: 6505' GL

Formation:	Top	Bottom	Contents
Surface	San Jose	2417'	
Ojo Alamo	2417'	2567'	aquifer
Kirtland	2567'	2982'	gas
Fruitland Coal	2982'	3182'	gas
Pictured Cliffs	3182'		gas
Total Depth	3430'		

Logging Program:

Open hole - Surface to TD - ARI, 2567' to TD - CNL-CDL
Cased hole - Surface to TD - CBL-CCL-GR

Coring Program: None

Mud Program:

<u>Interval</u>	<u>Type</u>	<u>Weight</u>	<u>Vis.</u>	<u>Fluid Loss</u>
0- 120'	Spud	8.4-9.0	40-50	no control
120-3430'	FW	8.4-9.0	32-45	no control

Casing Program (as listed, equivalent, or better):

<u>Hole Size</u>	<u>Depth Interval</u>	<u>Csg. Size</u>	<u>Wt.</u>	<u>Grade</u>
9 7/8"	0 - 120'	7"	20.0#	J-55
6 1/4"	0 - 3430'	2 7/8"	6.5#	J-55

Float Equipment: 7" surface casing - saw tooth guide shoe.
Centralizers will be run in accordance with Onshore Order #2.

2 7/8" production casing - float shoe on bottom. Three centralizers run every other joint above shoe. Seven centralizers run every 3rd joint to the base of the Ojo Alamo @ 2567'. Two turbolizing type centralizers - one below and one into the base of the Ojo Alamo @ 2567'. Standard centralizers thereafter every fourth joint up to the base of the surface pipe.

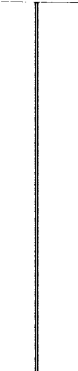
Wellhead Equipment: 7" x 2 7/8" 2000 psi screw on independent wellhead.

Cementing:

7" surface casing - cement with 27 sx Class A, B Portland Type I, II cement (32 cu.ft. of slurry, bring cement to surface through 3/4" line).
WOC 8 hrs. Test casing to 600 psi for 30 minutes.

2 7/8" production casing - Lead w/482 sx Premium Lite cement w/3% calcium chloride, 1/4 pps Flocele, 5 pps LCM-1, 0.4% FL-52, 0.4% SMS. Tail w/90 sx Type III cement w/1% calcium chloride, 1/4 pps Flocele, and 0.2% FL-52 (1153 cu.ft. of slurry, 100% excess to circulate to surface).

Note: If open hole logs are run, cement volumes will be based on 25% excess over caliper volumes.



BOP and tests:

Surface to TD - 11" 2000 psi (minimum double gate BOP stack (Reference Figure #1). Prior to drilling out surface casing, test rams to 600 psi/30 min.

Completion - 6" 2000 psi (minimum) double gate BOP stack (Reference Figure #2). Prior to completion operations, test rams and casing to 2000 psi/15 min.

From surface to TD - choke manifold (Reference Figure #3).

Pipe rams will be actuated to least once each day and blind rams actuated once each trip to test proper functioning. An upper kelly cock valve with handle and drill string safety valves to fit each drill string will be maintained and available on the rig floor.

BOP and tests (if a coiled tubing drilling rig is utilized):

Surface to TD: 7 1/16" 2000 psi (minimum) Torus annular BOP stack (Reference Figure #1B). Prior to drilling out surface casing, test annular BOP to 600 psi/30 minutes.

Completion: 7 1/16" 2000 psi (minimum) double gate BOP stack (Reference Figure #2). Prior to completion operations, test blind rams and casing to 1500 psi/30 minutes; all pipe rams and casing to 1500 psi/30 minutes each.

From surface to TD: choke manifold (Reference Figure #3).

The annular BOP will be actuated to close on drill pipe (coiled tubing) at least once each day and to close on open hole once each trip to test proper functioning.

Additional information:

- * The Pictured Cliffs formation will be completed.
- * Anticipated pore pressure for the Pictured Cliffs is 500 psi.
- * This gas is dedicated.
- * The southwest quarter of Section 5 is dedicated to the Pictured Cliffs.

Eric J. Diles
Drilling Engineer

10/11/01
Date

--	--	--