

UNITED STATES
DEPARTMENT OF THE INTERIOR
BUREAU OF LAND MANAGEMENT

FORM APPROVED
OMB NO. 1004-0136
Expires: November 30, 2000

APPLICATION FOR PERMIT TO DRILL OR REENTER

1a. Type of Work <input checked="" type="checkbox"/> DRILL <input type="checkbox"/> REENTER		5. Lease Serial No. Jic Cont 95	
1b. Type of Well <input type="checkbox"/> Oil Well <input checked="" type="checkbox"/> Gas Well <input type="checkbox"/> Other <input type="checkbox"/> Single Zone <input checked="" type="checkbox"/> Multiple Zone		6. If Indian, Allottee or Tribe Name Jicarilla Apache	
2. Name of Operator Energen Resources Corporation		7. Unit or CA Agreement Name and No. 21289	
3a. Address 2198 Bloomfield Highway, Farmington, NM 87401		8. Lease Name and Well No. Jicarilla 95 4B	
3b. Phone No. (include area code) (505) 325-6800		9. API Well No. 30-039-26852	
4. Location of Well (Report location clearly and in accordance with any State requirements)* At surface 915' FSL, 1975' FWL At proposed prod. zone		10. Field and Pool, or Exploratory Blanco MV; WC 27N3W26N; Mancos	
14. Distance in miles and direction from nearest town or post office* 19 miles northwest of Lindrieth, New Mexico		11. Sec., T., R., M., or Blk. and Survey or Area Sec. 26, T27N, R3W, N.M.P.M	
15. Distance from proposed* location to nearest property or lease line, ft. (Also to nearest drg. unit line, if any) 915'		12. County or Parish Rio Arriba	
16. No. of Acres in lease 2560		13. State NM	
17. Spacing Unit dedicated to this well 160 SW/4 - Mancos 320 W 1/2 - MV		18. Distance from proposed location* to nearest well, drilling, completed, applied for, on this lease, ft. 1000'	
19. Proposed Depth 8091'		20. BLM/BIA Bond No. on file	
21. Elevations (Show whether DF, KDB, RT, GL, etc.) 7323' GR		22. Approximate date work will start* Dec. 2001	
23. Estimated duration 14 Days			

24. Attachments

The following, completed in accordance with the requirements of Onshore Oil and Gas Order No. 1, shall be attached to this form:

- | | |
|---|--|
| 1. Well plat certified by a registered surveyor. | 4. Bond to cover the operations unless covered by an existing bond on file (see Item 20 above). |
| 2. A Drilling Plan | 5. Operator certification. |
| 3. A Surface Use Plan (if the location is on National Forest System Lands, the SUPO shall be filed with the appropriate Forest Service Office). | 6. Such other site specific information and/or plans as may be required by the authorized officer. |

25. Signature <i>Don Graham</i>	Name (Printed/Typed) Don Graham	Date 8/17/01
------------------------------------	------------------------------------	-----------------

Title

Drilling/Completion Foreman

Approved by (Signature) <i>S. Sw Anderson</i>	Name (Printed/Typed)	Date 10/2/01
--	----------------------	-----------------

Title

Asst. Field Mgr.

Office

Albug FO

Application approval does not warrant or certify that the applicant holds legal or equitable title to those rights in the subject lease which would entitle the applicant to conduct operations thereon.

Conditions of approval, if any, are attached.

Title 18 U.S.C. Section 1001 and Title 43 U.S.C. Section 1212, make it a crime for any person knowingly and willfully to make to any department or agency of the United States any false, fictitious or fraudulent statements or representations as to any matter within its jurisdiction.

*(Instructions on Reverse)

Y Attached

All surveys will be centralized

District I
PO Box 1980, Hobbs, NM 88241-1980

State of New Mexico
Energy, Minerals & Natural Resources Department

Form U-102
Revised February 21, 1994

District II
PO Drawer DD, Artesia, NM 88211-0719

OIL CONSERVATION DIVISION
PO Box 2088
Santa Fe, NM 87504-2088

Instructions on back
Submit to Appropriate District Office
State Lease - 4 Copies
Fee Lease - 3 Copies

District III
1000 Rio Brazos Rd., Aztec, NM 87410

District IV
PO Box 2088, Santa Fe, NM 87504-2088

☐ AMENDED REPORT

WELL LOCATION AND ACREAGE DEDICATION PLAT

*API Number 30-039-26852		*Pool Code 72319 - 97151	*Pool Name Blanco Mesaverde - W027N3W26N; Mancos (G)
*Property Code 21289	*Property Name JICARILLA 95		*Well Number 48
*GRID No. 162928	*Operator Name ENERGEN RESOURCES CORPORATION		*Elevation 7323'

¹⁰ Surface Location

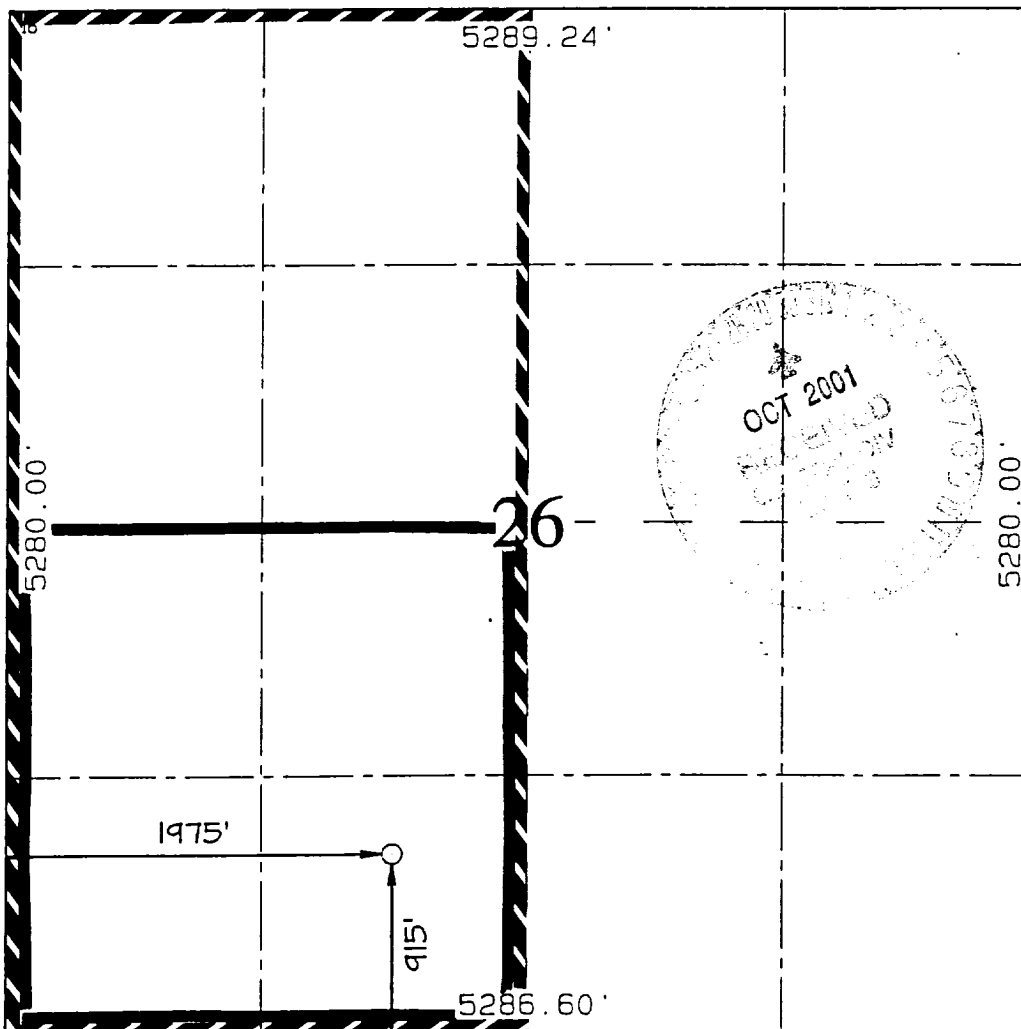
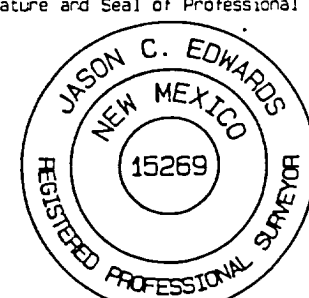
UL or lot no.	Section	Township	Range	Lot Idn	Feet from the	North/South line	Feet from the	East/West line	County
N	26	27N	3W		915	SOUTH	1975	WEST	RIO ARriba

¹¹ Bottom Hole Location If Different From Surface

UL or lot no.	Section	Township	Range	Lot Idn	Feet from the	North/South line	Feet from the	East/West line	County

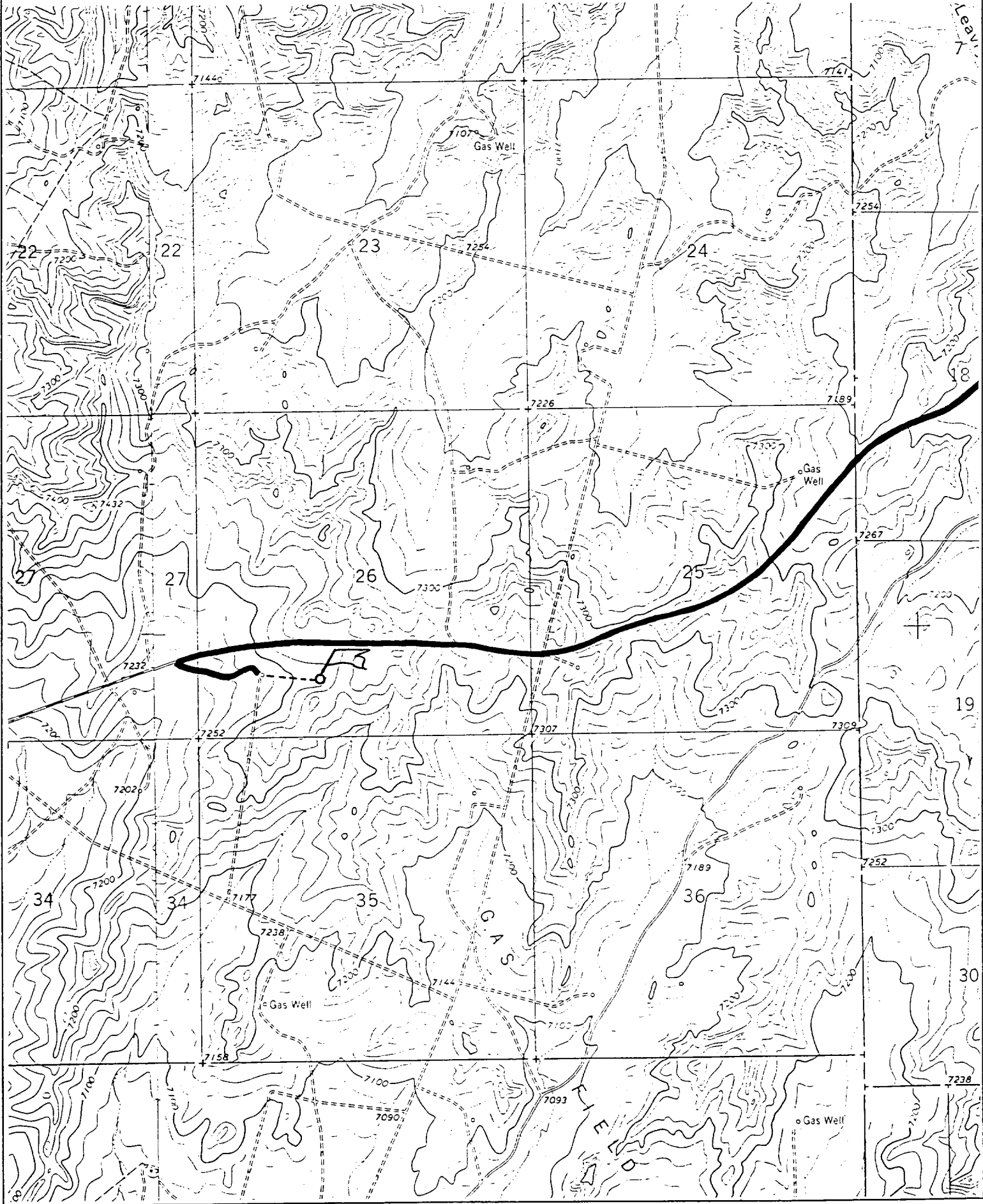
¹² Dedicated Acres 320/160	¹³ Joint or Infill	¹⁴ Consolidation Code	¹⁵ Order No.
---	-------------------------------	----------------------------------	-------------------------

NO ALLOWABLE WILL BE ASSIGNED TO THIS COMPLETION UNTIL ALL INTERESTS HAVE BEEN CONSOLIDATED
OR A NON-STANDARD UNIT HAS BEEN APPROVED BY THE DIVISION

	<p>¹⁷ OPERATOR CERTIFICATION I hereby certify that the information contained herein is true and complete to the best of my knowledge and belief.</p> <p>Signature: <u>Gary Brink</u> Printed Name: <u>Gary Brink</u> Title: <u>Production Superintendant</u> Date: <u>8/24/01</u></p>
	<p>¹⁸ SURVEYOR CERTIFICATION I hereby certify that the well location shown on this plat was plotted from field notes of actual surveys made by me or under my supervision, and that the same is true and correct to the best of my belief.</p> <p>Date of Survey: <u>JUNE 18, 2001</u></p> <p>Signature and Seal of Professional Surveyor</p> <div style="text-align: center;"> JASON C. EDWARDS Certificate Number <u>15269</u></div>

ENERGEN RESOURCES CORPORATION JICARILLA 95 #4B

915' FSL & 1975' FWL, SECTION 26, T27N, R3W, N.M.P.M.
RIO ARriba COUNTY, NEW MEXICO



OPERATIONS PLAN

WELL NAME: Jicarilla 95 #4B

LOCATION: 915' FSL, 1975' FWL, Section 26, T27N, R3W, Rio Arriba, New Mexico

FIELD: Blanco MV/WC:27N3W26N; Mancos

ELEVATION: 7323'

FORMATION TOPS:

Surface	San Jose	Cliff House	5536
Ojo Alamo	3330	Menefee	5792
Kirtland	3680	Point Lookout	6059
Fruitland	3750	Gallup	7136
Pictured Cliffs	3909		
Lewis	4110		
Huerfanito Benonite	4442		
		Total Depth	8091

LOGGING PROGRAM:

Open Hole Logs:

Surface to intermediate: NONE

Inter TD to total depth: Temp/HRI/CNT, LDT/GR

Mud Logs: 3600' to total depth

Coring: None

Natural Gauges: Every 500' from intermediate TD to total depth

MUD PROGRAM: Fresh water low solids mud from surface to intermediate TD (9.0 – 9.2 PPG).

Air/mist from intermediate casing point to total depth.

CASING PROGRAM:

<u>HOLE SIZE</u>	<u>DEPTH</u>	<u>CSG SIZE</u>	<u>WT.</u>	<u>GRADE</u>
12-1/4"	200'	9-5/8"	36#	J-55
8-3/4"	4310'	7"	20/23#	J-55
6-1/4"	4160'-8091'	4-1/2"	11.6#	J-55

TUBING PROGRAM:

7600'	2 3/8	4.7#	J-55
-------	-------	------	------

WELLHEAD: 11" 3000 x 9 5/8" casing head. 11" 3000 x 7 1/16" 3000 xmas tree.

BOP SPECIFICATIONS:

An 11" 2000 psi minimum double gate BOP stack (Figure 1) will be used following nipple up of casing head. During air drilling operations, a Shaffer Type 50 or equivalent rotating head will be installed on top of the stack. A 2" nominal, 2000 psi minimum choke manifold will be used. An upper Kelly Cock valve with handle available and drill string valve to fit each drill string will be available on the rig floor during drilling operations.

CEMENTING:

9 5/8 surface casing - Cement with 110 sxs Class B Cement with 1/4" Flocele/sx and 2% calcium chloride (130 cu. ft. of slurry, 100% excess to circulate to surface). WOC 12 hrs. Test casing to 600# for 30 minutes.

Texas Pattern Guide Shoe on bottom with centralizers on the first three joints.

7" intermediate casing - cement with 440 sxs 65/35 Class B Poz with 6% gel, 2% calcium chloride, 10% gilsonite, and 1/4# flocele/sk. Tail with 100 sxs Class B w/2% calcium chloride, 10% gilsonite and 1/4# flocele/sk. (972 cu. Ft. of slurry, 50% excess to circulate to surface). WOC 12 hrs. If cement does not circulate, run temperature survey in 8 hrs. to determine TOC. Test casing to 1200 psi for 30 minutes.

Cement nose guide shoe on bottom with a self-fill insert float valve on top of shoe joint. 8 bow spring centralizers spaced every 2nd joint off bottom. Two turbolating centralizers at the base of the Ojo Alamo.

4 1/2 Production Liner

Cement with 480 sxs 50/50 poz with 2% gel, 5 PPS gilsonite, .4% halad - 9 and 1/4# flocele/sk (605 cu. Ft., 50% excess to intermediate casing). WOC 18 hrs prior to completion.

must overlap at least 100'

Cement nose guide shoe on bottom with float collar on top of shoe joint. Liner hanger will have a neopreme packoff on top.

OTHER INFORMATION:

- 1) The Blanco Mesaverde and Gallup Dakota will be completed and downhole commingled.
- 2) No abnormal temperatures or pressures are anticipated.
- 3) Anticipated pore pressure for the Gallup is 900, Mesa Verde is 800, Pictured Cliffs is 500 and the Fruitland 400 psi.
- 4) If lost circulation is encountered, sufficient LCM will be added to the mud system to maintain well control.
- 5) This gas is dedicated.