

District I
1625 N. French Dr., Hobbs, NM 88240
District II
1301 W. Grand Ave., Artesia, NM 88210
District III
1000 Rio Brazos Rd., Aztec, NM 87410
District IV
1220 S. St Francis Dr., Santa Fe, NM 87505

State of New Mexico
Energy, Minerals and Natural Resources
Oil Conservation Division
1220 S. St Francis Dr.
Santa Fe, NM 87505

Form C-101

APPLICATION FOR PERMIT TO DRILL

Operator Name and Address Burlington Resources Oil and Gas Company LP PO Box 4289 Farmington, NM 87499		OGRID Number 14538
		API Number 30-39-26933
Property Code 7454	Property Name SAN JUAN 27-5 UNIT	Well No. 108N

Surface Location

Section	Township	Range	Foot Idn	Feet From	N S Line	Feet From	E W Line	County
K	15	27N	05W	1690	S	1905	W	Rio Arriba

Proposed Pools

BASIN DAKOTA (PRORATED GAS)	71599
BLANCO-MESAVERDE (PRORATED GAS)	72319

Well Type New Well	Well Type Gas	Cable Rotary	Lease Type Federal	Ground Level Elevation 6668
Multiple Y	Proposed Depth 7900	Formation Dakota Formation	Contractor	Spud Date

Proposed Casing and Cement Program

Type	Hole Size	Casing Size	Casing Weight/lb	Setting Depth	Sacks of Cement	Estimated TOC
Surf	12.25	9.675	32.3	200	159	0
Intl	8.75	7	20	3680	474	0
Linerl	6.25	4.5	10.5	7900	431	3580

Proposed Blowout Prevention Program

Type	Working Pressure	Test Pressure	Manufacturer
Double Ram	3000	3000	

I hereby certify that the information given above is true and complete to the best of my knowledge and belief.

Electronically Signed By: Peggy Cole

Title: Manager

Date: 10/23/2002

Phone: 505-320-5919

OIL CONSERVATION DIVISION

Electronically Approved By: Charlie Perrin

Title: Manager

Approval Date:
10/28/2002

Expiration Date:
10/28/2003

Conditions of Approval:

District I
1625 N. French Dr., Hobbs, NM 88240
District II
1301 W. Grand Ave., Artesia, NM 88210
District III
1000 Rio Brazos Rd., Aztec, NM 87410
District IV
1220 S. St Francis Dr., Santa Fe, NM 87505

State of New Mexico
Energy, Minerals and Natural Resources

Form C-102

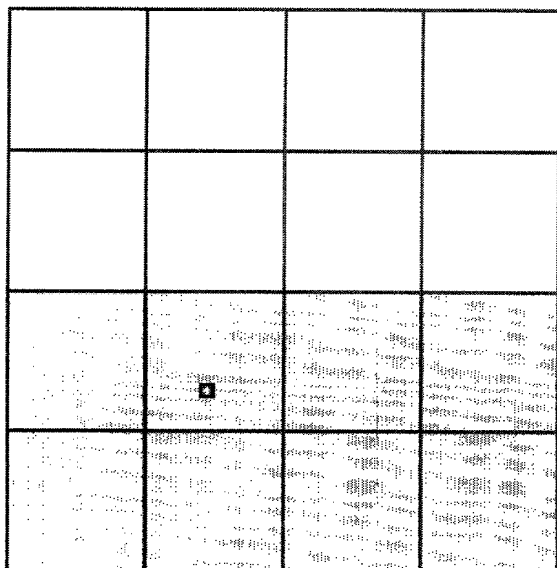
Oil Conservation Division
1220 S. St Francis Dr.
Santa Fe, NM 87505

WELL LOCATION AND ACREAGE DEDICATION PLAT

API Number: 30-39-26933	Pool Name: BASIN DAKOTA (PRORATED GAS)	Pool Code: 71599
Property Code: 7454	Property Name: SAN JUAN 27-5 UNIT	Well No: 108N
OGRID No. 14538	Operator Name: Burlington Resources Oil and Gas Company LP	Elevation: 6668

Surface And Bottom Hole Location

UL or Lot K	Section 15	Township 27N	Range 05W	Section 1690	NS Line S	Section 1905	EW Line W	County Rio Arriba
Dedicated Acres 320		Joint or Infill		Consolidation Code		Order No.		



OPERATOR CERTIFICATION

I hereby certify that the information contained herein is true and complete to the best of my knowledge and belief.

Electronically Signed By: **Peggy Cole**

Title: **Manager**

Date: **10/23/2002**

SURVEYOR CERTIFICATION

I hereby certify that the well location shown on this plat was plotted from field notes of actual surveys made by me or under my supervision, and that the same is true and correct to the best of my belief.

Electronically Signed By: **Roy Rush**

Date of Survey: **10/1/2001**

Certificate Number: **14827**

District I
1625 N. French Dr., Hobbs, NM 88240
District II
1301 W. Grand Ave., Artesia, NM 88210
District III
1000 Rio Brazos Rd., Aztec, NM 87410
District IV
1220 S. St Francis Dr., Santa Fe, NM 87505

State of New Mexico
Energy, Minerals and Natural Resources

Form C-102

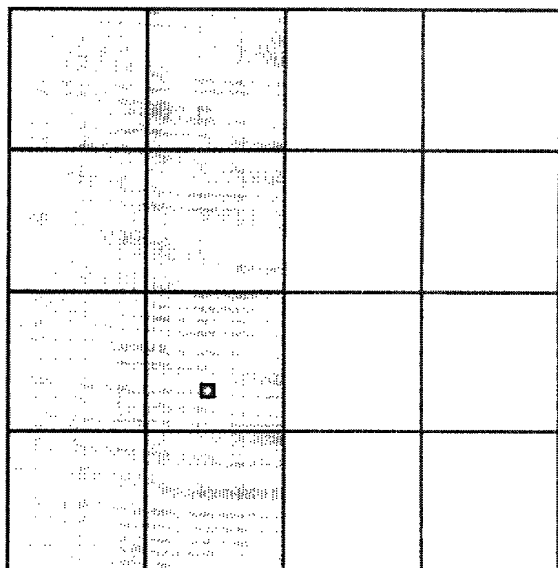
Oil Conservation Division
1220 S. St Francis Dr.
Santa Fe, NM 87505

WELL LOCATION AND ACREAGE DEDICATION PLAT

API Number 30-39-26933	Pool Name BLANCO-MESAVERDE (PRORATED GAS)	Pool Code 72319
Property Code 7454	Property Name SAN JUAN 27-5 UNIT	Well No 108N
OGRID No 14538	Operator Name Burlington Resources Oil and Gas Company LP	Elevation 6668

Surface And Bottom Hole Location

UL or Lot K	Section 15	Township 27N	Range 05W	Foot Idn	Feet From 1690	N S Line S	Feet From 1905	E W Line W	County Rio Arriba
Dedicated Acres 320	Count or 1/4-til	Consolidation Code	Order No						



OPERATOR CERTIFICATION

I hereby certify that the information contained herein is true and complete to the best of my knowledge and belief.

Electronically Signed By: Peggy Cole
Title: Manager
Date: 10/23/2002

SURVEYOR CERTIFICATION

I hereby certify that the well location shown on this plat was plotted from field notes of actual surveys made by me or under my supervision, and that the same is true and correct to the best of my belief.

Electronically Signed By: Roy Rush
Date of Survey: 10/1/2001
Certificate Number: 14827