

NEW MEXICO OIL CONSERVATION COMMISSION  
Well Location and Acreage Dedication Plat

Section A.

Date SEPTEMBER 9, 1957

Operator SOUTHERN UNION GAS COMPANY Lease NICKSON  
Well No. 5 Unit Letter C Section 23 Township 25N Range 6W NMPM  
Located 1100 Feet From Bottom Line, 1650 Feet From West Line  
County SAN JUAN G. L. Elevation To be determined Dedicated Acreage 160 Acres  
Name of Producing Formation PICQUED CLIFFS Pool DALLAS PICQUED CLIFFS

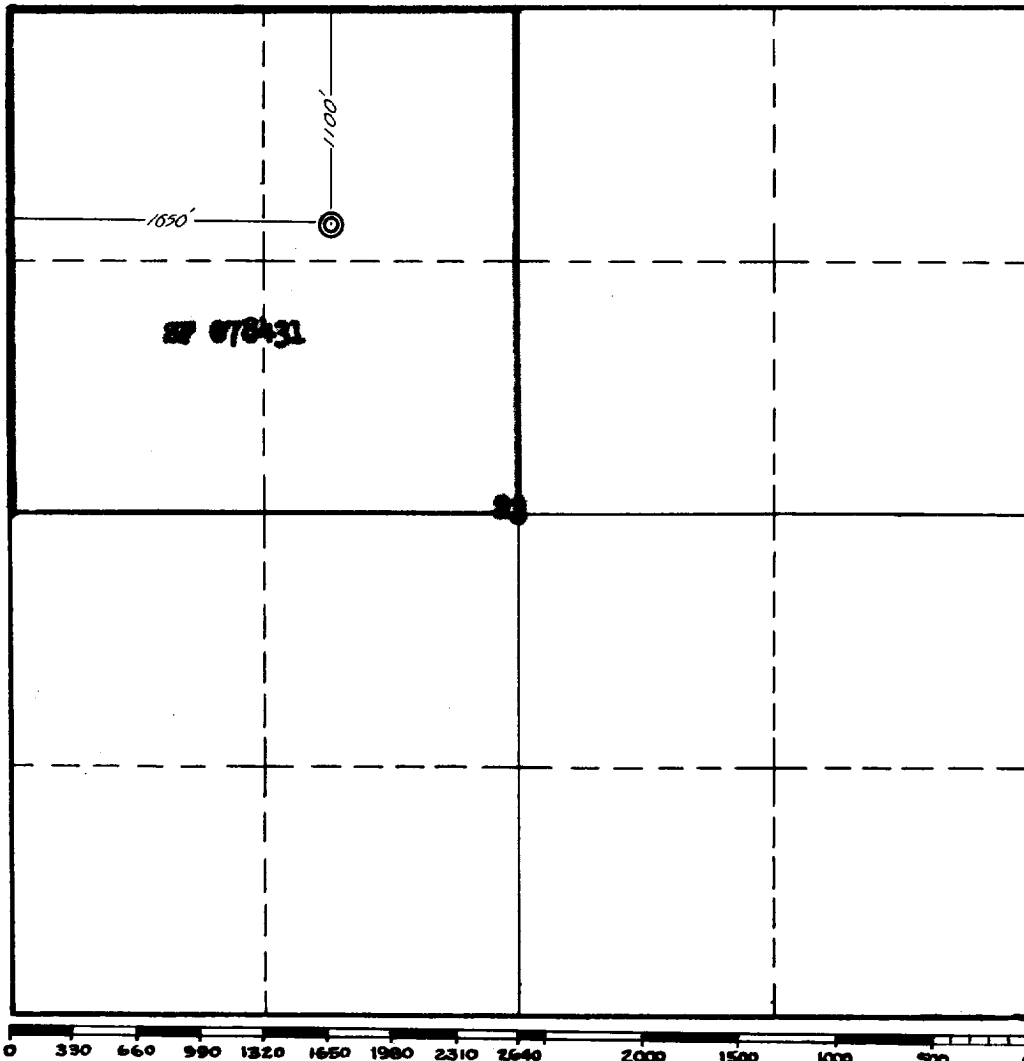
1. Is the Operator the only owner\* in the dedicated acreage outlined on the plat below?  
Yes X No       .
2. If the answer to question one is "no," have the interests of all the owners been consolidated by communitization agreement or otherwise? Yes        No       . If answer is "yes," Type of Consolidation
3. If the answer to question two is "no," list all the owners and their respective interests below:

Owner

Land Description



Section. B



This is to certify that the information in Section A above is true and complete to the best of my knowledge and belief.

SOUTHERN UNION GAS COMPANY  
(Operator)  
Original Signed By  
A. M. WIEDERKEHR  
(Representative)

MKT. BLDG., DALLAS, TEXAS  
Address

This is to certify that the well location shown on the plat in Section B was plotted from field notes of actual surveys made by me or under my supervision and that the same is true and correct to the best of my knowledge and belief.

Date Surveyed       

Registered Professional  
Engineer and/or Land Surveyor.

Certificate No.         
(See instructions for completing this form on the reverse side)

INSTRUCTIONS FOR COMPLETION:

1. Operator shall furnish and certify to the information called for in Section A.
2. Operator shall outline the dedicated acreage for both oil and gas wells on the plat in Section B.
3. A registered professional engineer or land surveyor registered in the State of New Mexico or approved by the Commission shall show on the plat the location of the well and certify this information in the space provided.
4. All distances shown on the plat must be from the outer boundaries of Section.
5. If additional space is needed for listing owners and their respective interests as required in question 3, Section A, please use space below

OIL CONSERVATION COMMISSION		
AZTEC DISTRICT OFFICE		
No. Copies Received		
DISTRIBUTION		
	COPIES	RECEIVED
Operator		
Santa Fe		
Proration Office		
State Land Office		
U. S. G. S.		
Transporter		
File		

\* "Owner" means the person who has the right to drill into and to produce from any pool and to appropriate the production either for himself or for himself and another. (65-3-29 (e) NMSA 1953 Comp.)

COMPANY Southern Union Gas Company

Well Name & No. NICHOLSON NO. 5

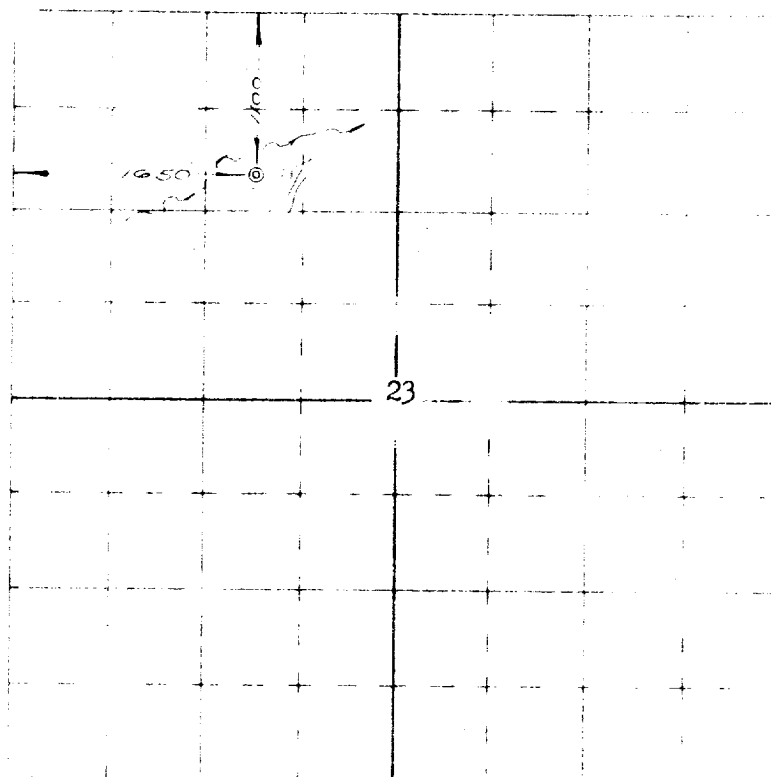
Lease No. SW 078431

Location 1100' from the North line and 1650' from the West line.

Section 15

Township 23 Range 26 N. R. 8 W., N.M.P.M., San Juan County, New Mexico.

Ground Elevation



Scale - 4 inches equal 1 mile

Surveyed August 15, 1955

This is to certify that the above plat was prepared from field notes of actual surveys made by me or under my supervision and that the same are true and correct to the best of my knowledge and belief.

*Ernest V. Echolaw*

Ernest V. Echolaw  
Registered Land Surveyor  
N. M. Reg. #1545

Beijing  
New Mexico  
Fairmont, New Mexico



<b>OIL CONSERVATION COMMISSION</b>		
<b>AZTEC DISTRICT OFFICE</b>		
No. Copies Received		<u>3</u>
<b>DISTRIBUTION</b>		
	NO. FURNISHED	
Operator	/	
Santa Fe	/	
Protraction Office		
State Land Office		
U. S. G. S.		
Transporter	/	
File		✓