

UNITED STATES
DEPARTMENT OF THE INTERIOR
BUREAU OF LAND MANAGEMENT

SUBMIT IN TRIPLICATE*
(Other instructions on re-
verse side)

Form approved.
Budget Bureau No. 1004-0135
Expires August 31, 1985

5. LEASE DESIGNATION AND SERIAL NO.

NM-013492

6. IF INDIAN, ALLOTTEE OR TRIBE NAME

7. UNIT AGREEMENT NAME

West Bisti

8. FARM OR LEASE NAME

WBU

9. WELL NO.

107

10. FIELD AND POOL, OR WILDCAT

West Bisti - Gallup

11. SEC., T., R., M., OR BLK. AND
SURVEY OR AREA

Sec. 19, T26N, R13W

12. COUNTY OR PARISH

San Juan

13. STATE

New Mexico

1. SUNDRY NOTICES AND REPORTS ON WELLS
(Do not use this form for proposals to drill or to deepen or plug back to a different reservoir.
Use APPLICATION FOR PERMIT—" for such proposals.)

2. NAME OF OPERATOR
Chevron U.S.A. Inc., Rm #11111

3. ADDRESS OF OPERATOR
P.O. BOX 599, Denver, CO 80201

4. LOCATION OF WELL (Report location clearly and in accordance with any State requirements.*
See also space 17 below.)
At surface

NW, NE

14. PERMIT NO.

30-045-05794

15. ELEVATIONS (Show whether DF, RT, CR, etc.)

6,594' GR

16. Check Appropriate Box To Indicate Nature of Notice, Report, or Other Data

NOTICE OF INTENTION TO:

TEST WATER SHUT-OFF

FRACTURE TREAT

SHOOT OR ACIDIZE

REPAIR WELL

(Other)

PULL OR ALTER CASING

MULTIPLE COMPLETE

ABANDON*

CHANGE PLANS

SUBSEQUENT REPORT OF:

WATER SHUT-OFF

FRACTURE TREATMENT

SHOOTING OR ACIDIZING

(Other) Convert to Injection

(Note: Report results of multiple completion on Well
Completion or Recompletion Report and Log form.)

REPAIRING WELL

ALTERING CASING

ABANDONMENT*

17. DESCRIBE PROPOSED OR COMPLETED OPERATIONS (Clearly state all pertinent details, and give pertinent dates, including estimated date of starting any proposed work. If well is directionally drilled, give subsurface locations and measured and true vertical depths for all markers and zones pertinent to this work.)

The well was converted to water injection as follows:

1. MIRU Well Tech Rig #95 on 4/25/88.
2. Pulled rods and pump. ND wellhead. NU and tested BOPE. POOH w/ production string.
3. Cleaned out to 5424' (PBD).
4. Ran Pkr to 5245'. Tested 5½" csg. Isolated leak f/3106'-4315'.
5. Set CIBP at 5190'. Cement squeezed leak with total of 270 sxs Class "H" cmt (4 squeezes).
6. * Drilled out cement to CIBP. Tested 5½" csg to 300 psi. Lost 250 psi in 15 min.
7. Drilled out CIPB. Cleaned out to PBD.
8. Acidized perfs 5359'-5413' with 4000 gals FE acid. Swabbed back acid load.
9. Ran 5½" Otis "RH" Pkr on 2-3/8" Injection Tubing to 5251'. Hydrotested to 3000 psi. Pumped Pkr fluid/freeze blanket.
10. Set Pkr at 5251'. ND BOPE. NU wellhead. Tested Annulus to 300 psi on chart. Bled to 50 psi in 15 min. Released rig. Place well on injection.

RECEIVED

JUN 09 1988

ACCEPTED FOR RECORD

JUN 03 1988

FARMINGTON RESOURCE AREA

6-BLM

1-JTC

1-EEM

1-Sec. 724-C

2-Drlg

1-File

1-PLM

18. I hereby certify that the foregoing is a true and correct copy of the original.

SIGNED

J. H. Watson

DIST. 3

BY

Technical Assistant

DATE

5-18-88

(This space for Federal or State office use)

APPROVED BY

TITLE

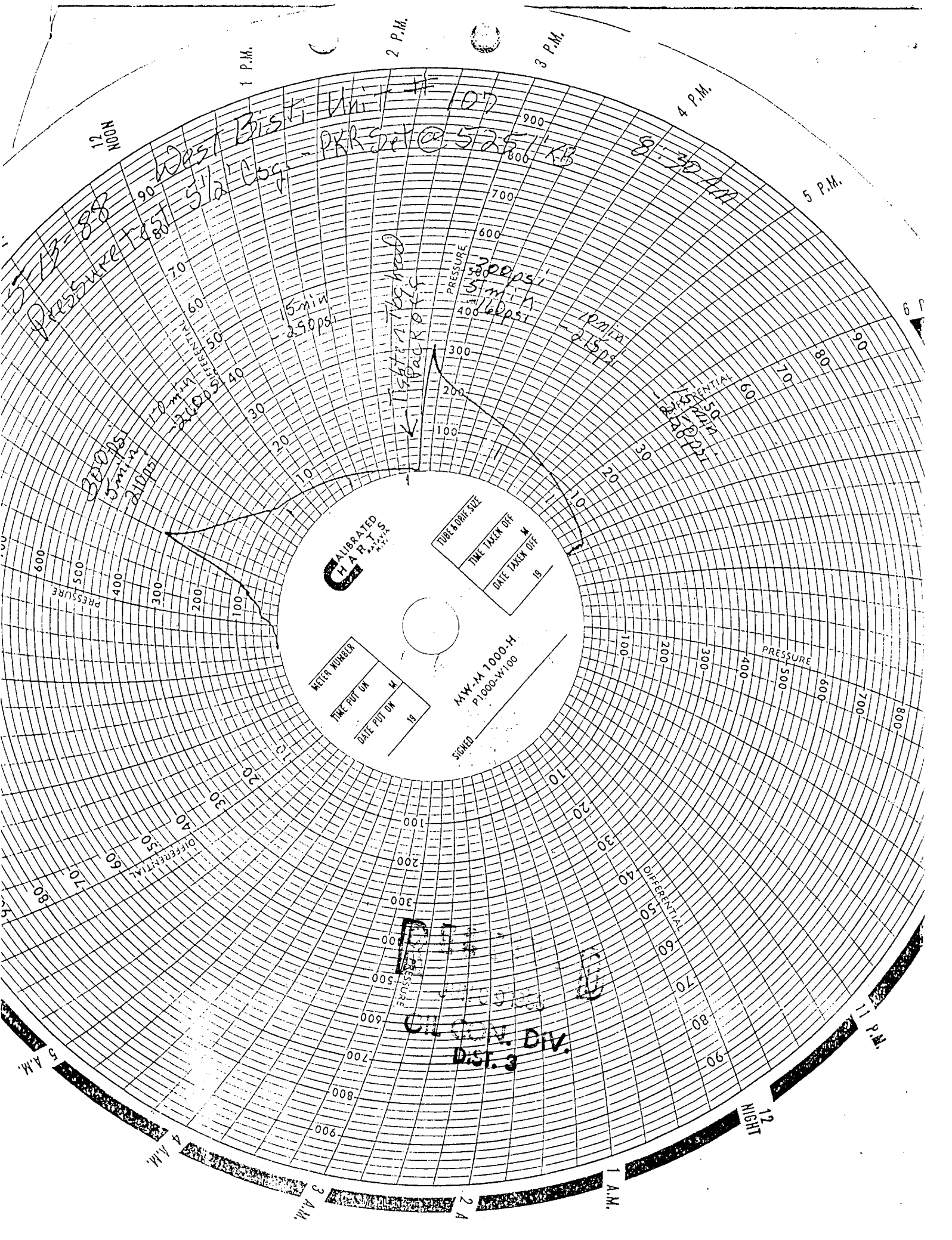
DATE

CONDITIONS OF APPROVAL, IF ANY:

* Obtained verbal approval on variance of annulus integrity test from Frank Chavez (NMOGC) and Ken Howell (BLM) on 5/10/88. Casing pressure will be monitored monthly and reported to NMOGC and BLM.

*See Instructions on Reverse Side

NMOGC



ST-13-88
Pressure Test 5 1/2 Csg. - PKR Set @ 5257' KB

300ps 5min 210ps
10min 240ps
5min 290ps
10min 215ps
15min 250ps

Lighter 1/2 in had back off

CALIBRATED H.A.P.T.S. 1964
TUBE & ORIF. SIZE
TIME TAKEN OFF
DATE TAKEN OFF
METER NUMBER
TIME PUT ON
DATE PUT ON
MW-1000-H
P.1000-W100
SIGNED

OIL CON. DIV.
DIST. 3