

Distribution: O+4 (BLM); 1-Accounting; 1-Crystal; 1-File

Form 3160-5
(June 1990)

UNITED STATES
DEPARTMENT OF THE INTERIOR
BUREAU OF LAND MANAGEMENT

FORM APPROVED
Budget Bureau No. 1004-0135
Expires: March 31, 1993

SUNDRY NOTICES AND REPORTS ON WELLS

Do not use this form for proposals to drill or to deepen or reentry to a different reservoir.
Use "APPLICATION FOR PERMIT--" for such proposals

SUBMIT IN TRIPLICATE

1. Type of Well

☒ Oil Well ☐ Gas Well ☐ Other

2. Name of Operator

Merrion Oil & Gas Corporation (14634)

3. Address and Telephone No.

610 Reilly Avenue, Farmington, NM 87401-2634 (505) 327-9801

4. Location of Well (Footage, Sec., T., R., M., or Survey Description)

**1980' fnl & 1978' fwl (SENW)
Section 9, T26N, R12W**

5. Lease Designation and Serial No.

SF-078944A

6. If Indian, Allottee or Tribe Name

7. If Unit or CA, Agreement Designation

8. Well Name and No.

Nelson A No. 1

9. API Well No.

30-045-05953

10. Field and Pool, or Exploratory Area

Gallegos Gallup

11. County or Parish, State

**San Juan County,
New Mexico**

12. CHECK APPROPRIATE BOX (s) TO INDICATE NATURE OF NOTICE, REPORT, OR OTHER DATA

TYPE OF SUBMISSION

TYPE OF ACTION

☒ Notice of Intent

☐ Subsequent Report

☐ Final Abandonment Notice

☐ Abandonment

☒ Recompletion

☒ Plugging Back

☐ Casing Repair

☐ Altering Casing

☐ Other

☒ Change of Plans

☐ New Construction

☐ Non-Routine Fracturing

☐ Water Shut-Off

☐ Conversion to Injection

☐ Dispose Water

(Note: Report results of multiple completion on Completion or Recompletion Report and Log form.)

13. Describe Proposed or completed Operations (Clearly state all pertinent details, and give pertinent dates, including estimated date of starting any proposed work. If well is directionally drilled, give subsurface locations and measured and true vertical depths for all markers and zones pertinent to this work.)*

The subject Gallup producer is uneconomic and is shut-in. Merrion plans to plug the Gallup, put a cement plug across the Mesaverde top, circulate cement across the Pictured Cliffs sand, and complete the well in the WAW Fruitland Sand Pictured Cliffs formation. Enclosed is a procedure and a C-102 plat for your approval.

RECEIVED
MAR - 9 1998
OIL CON. DIV.
DIST. 3

14. I hereby certify that the foregoing is true and correct

Signed

George F. Sharpe
George F. Sharpe

Title **Petroleum Engineer**

Date **3/3/98**

(This space for Federal or State office use)

Approved By

/s/ Duane W. Spencer

Title

Date

MAR - 5 1998

Conditions of approval, if any:

District I
PO Box 1980, Hobbs, NM 88241-1980
District II
811 South First, Artesia, NM 88210
District III
1000 Rio Bruma Rd., Aztec, NM 87410
District IV
2040 South Pacheco, Santa Fe, NM 87505

State of New Mexico
Energy, Minerals & Natural Resources Department

OIL CONSERVATION DIVISION
2040 South Pacheco
Santa Fe, NM 87505

NOV 10 1994
FORM C-102

Form C-102
Revised October 18, 1994
Instructions on back
Submit to Appropriate District Office
State Lease - 4 Copies
Fee Lease - 3 Copies

☐ AMENDED REPORT

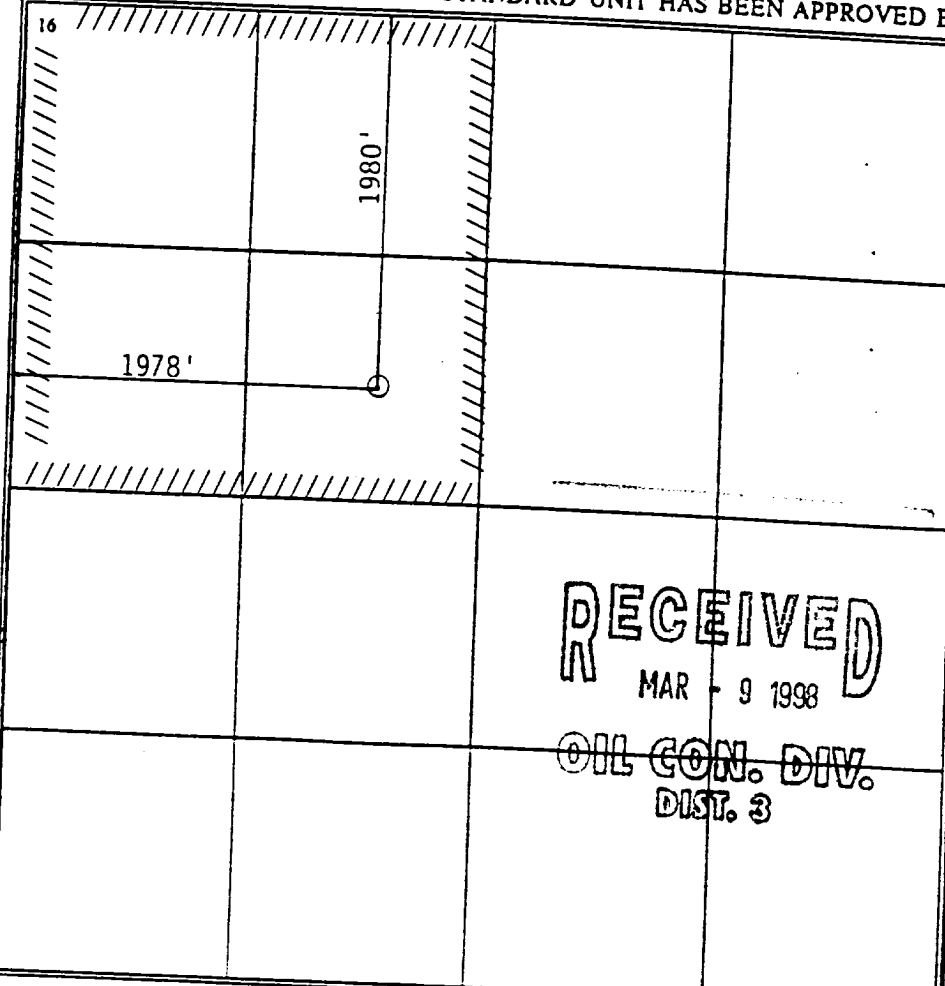
WELL LOCATION AND ACREAGE DEDICATION PLAT

* API Number 30-045-05953		* Pool Code 87190		* Pool Name WAW Fruitland Sand Pictured Cliffs <i>EXT</i>	
* Property Code 007823		* Property Name Nelson A			
* OGRID No. 014634		* Operator Name Merrion Oil & Gas Corporation			
				* Well Number 001	
				* Elevation 6005' GL	

10 Surface Location									
UL or lot no. F	Section 9	Township 26N	Range 12W	Lot Ida SENW	Feet from the 1980	North/South line north	Feet from the 1978	East/West line west	County San Juan

11 Bottom Hole Location If Different From Surface									
UL or lot no.	Section	Township	Range	Lot Ida	Feet from the	North/South line	Feet from the	East/West line	County
12 Dedicated Acres 160									
13 Joint or Infill									
14 Consolidation Code									
15 Order No.									

NO ALLOWABLE WILL BE ASSIGNED TO THIS COMPLETION UNTIL ALL INTERESTS HAVE BEEN CONSOLIDATED
OR A NON-STANDARD UNIT HAS BEEN APPROVED BY THE DIVISION

	17 OPERATOR CERTIFICATION I hereby certify that the information contained herein is true and complete to the best of my knowledge and belief. <i>George F. Sharpe</i> Signature George F. Sharpe Printed Name Oil & Gas Investment Title March 3, 1998 Date
	18 SURVEYOR CERTIFICATION I hereby certify that the well location shown on this plat was plotted from field notes of actual surveys made by me or under my supervision, and that the same is true and correct to the best of my belief. Date of Survey Signature and Seal of Professional Surveyer: Certificate Number
	RECEIVED MAR - 9 1998 OIL CON. DIV. DIST. 3

Merrion Oil & Gas Corporation

PICTURED CLIFFS RECOMPLETION PROCEDURE

March 3, 1998

Well:	NELSON A-1	Field:	WAW Pictured Cliffs
Location:	1980' fsl, 1980' fwl Sec 9, T26N, R12W San Juan County, New Mexico	Elevation:	6015' RKB 6005' GL
By:	George Sharpe	Lease No:	SF 078944-A

Project:

PLUG BACK GALLUP AND RECOMPLETE ~~FRUITLAND~~ *PC*

Procedure:

AFE 98011 - Prior to Move-in

1. Check for wellsite anchors.
2. Haul in frac tank. Load with water.

Put Cement Plug Across Gallup Top & Liner Top

1. Move in workover rig. POOH w/ +/- 5000' rods. Lay down rods.
2. RD wellhead. RU BOPs. Tally out of hole w/ tbg.
3. TIH w/ CIBP on tbg. Set at 4836'. Roll hole w/ clean fluid to recover any oil.
4. Spot 38 sx cmt plug across Glp top to 4605'.
5. Pull above cmt & rvrs clean.
6. TOH laying down tbg to 3988'.
7. Spot 25 sx cmt plug across Lnr top to 3888'. TOH.

Squeeze Well Across Mesaverde Top

1. Perf sqz holes below MV at +/-2105'.
2. While WL on hole, run GR-CCL across FC 1300' to 300'.
3. TIH W/ CIGR on tbg. Set CIGR at +/-2055'.
4. Circulate +/-70 cu ft of cmt across MV top (will cover 100' w/ 100% excess).
5. Sting out of CIGR. Circ 13 cu ft (50') on top of CIGR. TOH.

AFE 97071 - Squeeze Well Across Pictured Cliffs Top to Surface

1. Perf sqz holes below PC at +/-1330'.
2. TIH w/ CIGR on tbg. Set at +/-1310'.
3. Establish circulation to surface.
4. Circulate +/-125 sx w/ 1/4#/sx celloflake, 1#/sx gilsonite, 1% CaCl across PC & FC.
5. Sting out of CIGR. Reverse circ clean w/ 2% Kcl.
6. Press test csg to 500 psi. Swab csg down to 800'. TOH.
7. If can't circulate, perf sqz hole @ 1150'. Establish circ, & cmt as above. Pull to 1050' & reverse clean. Sqz lightly (less than 0.5 bbl to 200 psi max). WOC. Drill out plug.
8. If can't circ to sqz holes, sqz 60 sx cmt recipe into CIGR. Pull out. Reverse clean. Spot 60 sx from 1160' up (+-540'). Pull to 650'. Reverse clean to establish cmt top. Sqz 10 bbls max (420') to max press of 300 psi. WOC. Drill out plug.

Perforate & Stimulate ~~Eastland~~ ~~East~~

PC

1. RU perforators. If circulated cmt above, run temp log to see top of cmt. If block squeezed, run CBL to evaluate isolation of PC perfs.
2. Perf 1233-43' w/ 4SPF at 120 deg. (40 holes).
3. Pick up 4-1/2" frac string. RIH w/ 7-5/8" Pkr. Set above perfs & below sqz holes.
4. Pump 750 gal 15% Hcl w/ additives. Obtain step rate test and ISIP.
5. Frac well w/ 60,000# 20-40, 20# XL, 70Q foam at 30 BPM. Tail in w/ resin coated sand. **USE FILTERED 2% Kcl for frac.**
6. Blow back frac as soon as possible. TOH & lay down frac string.
7. TIH w/ 2-3/8" tbg. Insure no fill across perfs.
8. Swab test. If won't flow, land tbg below perfs. Run 3/4" rods & 2X1-1/4X6X9X12 RHAC-EQ pump (same as Serendipity) if necessary. RDMOL.

Nelson A-1 Electric Log

1000

1100

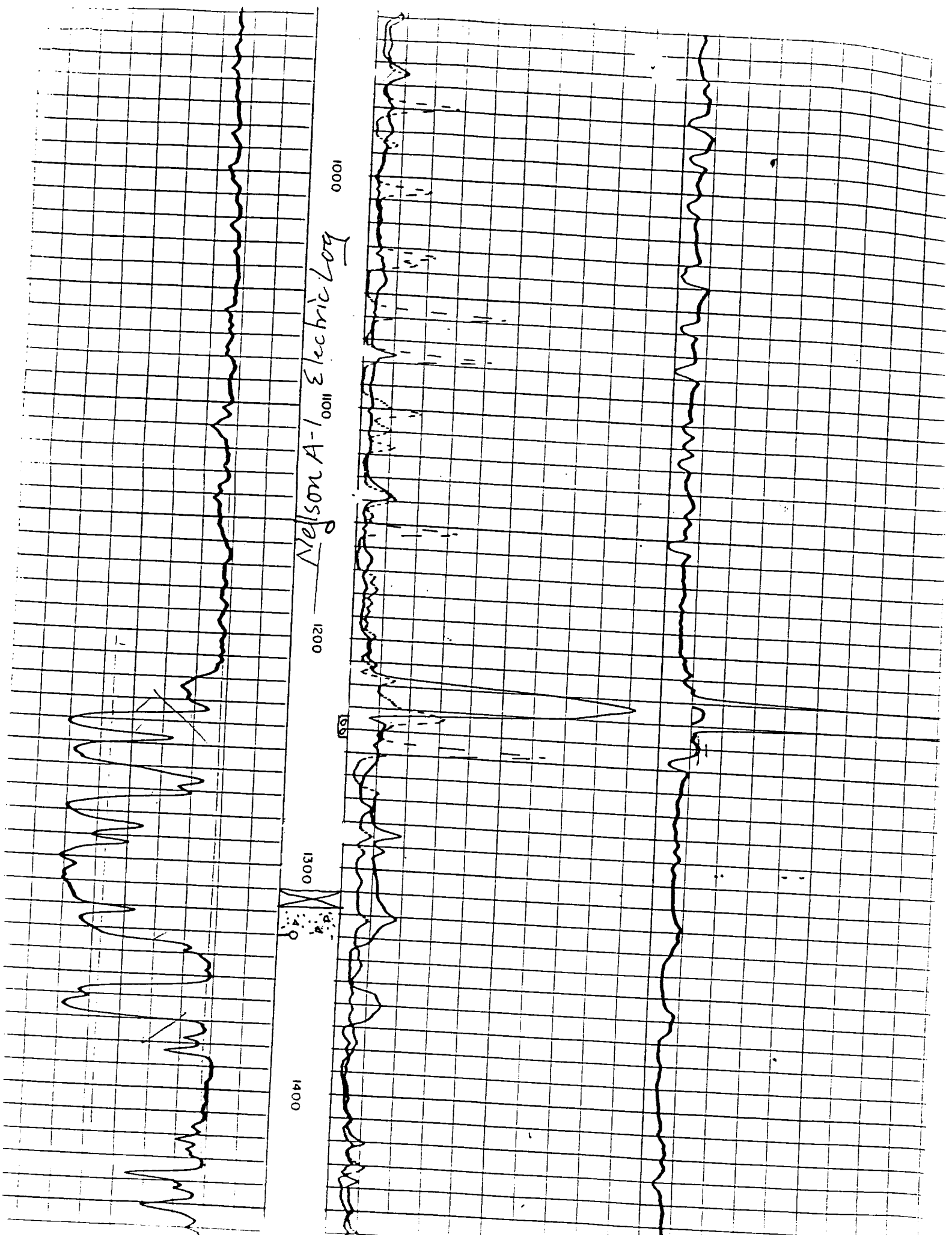
1200

1300

1400

SB

4.0



Merrion Oil & Gas Corporation Wellbore Schematic

Nelson A No. 1

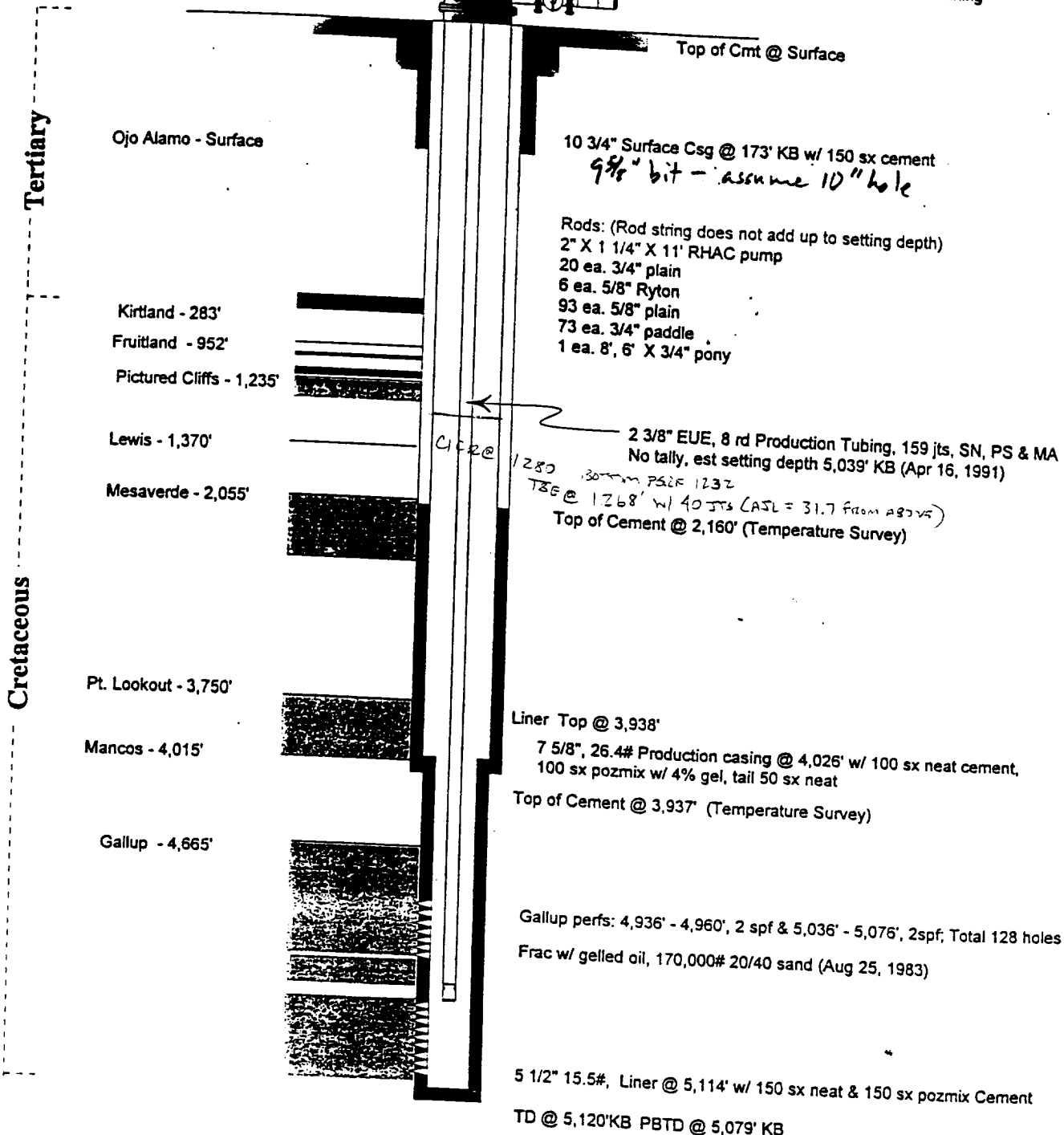
Current Wellbore Configuration

Location: 1980' fml & 1,978' fml (se nw)
Sec 9, T26N, R12W, NMPM
San Juan Co, New Mexico

Prepared: 12/10/96

Elevation: 6,005' GL
6,015' KB

By: Connie Dinning



WELL DATA:

CUM GAS: 2,250,921 mcf (1/96)
CUM OIL: 14,748 bbl (1/96)
SPUD: May 29, 1957
COMPLETED: March, 1991
(most recently)

STATUS: SHUT IN OCTOBER 9, 1994, UNECONOMIC TO OPERATE

Capacities:
5 1/2" - 0.233 Bbl/ft
7 5/8" - 0.407 Bbl/ft
7 5/8" - 10" hole - 0.407 Bbl/ft