

UNITED STATES  
DEPARTMENT OF THE INTERIOR  
BUREAU OF LAND MANAGEMENT

FORM APPROVED  
Budget Bureau No. 1004-0135  
Expires: March 31, 1993

**SUNDRY NOTICES AND REPORTS ON WELLS**

Do not use this form for proposals to drill or to deepen or reentry to a different reservoir.  
Use "APPLICATION FOR PERMIT—" for such proposals

5. Lease Designation and Serial No.  
**SF 080384-B**

6. If Indian, Allottee or Tribe Name

7. If Unit or CA, Agreement Designation

8. Well Name and No.  
**Hickman A #2**

9. API Well No.  
**30-045-06037**

10. Field and Pool, or Exploratory Area  
**Gallegos Gallup**

11. County or Parish, State  
**San Juan,  
New Mexico**

**SUBMIT IN TRIPLICATE**

1. Type of Well

☒ Oil Well ☐ Gas Well ☐ Other

2. Name of Operator

**Merrion Oil & Gas Corporation**

3. Address and Telephone No.

**P. O. Box 840, Farmington, New Mexico 87499**

**(505) 327-9801**

4. Location of Well (Footage, Sec., T., R., M., or Survey Description)

**1980' FSL & 660' FWL  
Section 3, T26N, R12W**

12. CHECK APPROPRIATE BOX(es) TO INDICATE NATURE OF NOTICE, REPORT, OR OTHER DATA

TYPE OF SUBMISSION

- ☒ Notice of Intent  
☐ Subsequent Report  
☐ Final Abandonment Notice

TYPE OF ACTION

- ☒ Abandonment  
☐ Recompletion  
☐ Plugging Back  
☐ Casing Repair  
☐ Altering Casing  
☐ Other \_\_\_\_\_
- ☐ Change of Plans  
☐ New Construction  
☐ Non-Routine Fracturing  
☐ Water Shut-Off  
☐ Conversion to Injection  
☐ Dispose Water

(Note: Report results of multiple completion on Well Completion or Recompletion Report and Log form.)

13. Describe Proposed or Completed Operations (Clearly state all pertinent details, and give pertinent dates, including estimated date of starting any proposed work. If well is directionally drilled, give subsurface locations and measured and true vertical depths for all markers and zones pertinent to this work.)

Merrion Oil & Gas Corporation requests approval to Plug & Abandon the above mentioned well as per attached procedure.

RECEIVED  
JUN - 5 1994

OIL CON. DIV.  
DIST. 2

RECEIVED  
BLM  
JUN 31 PM 1:31  
070 FARMINGTON, NM

14. I hereby certify that the foregoing is true and correct

Signed

*Margi Sullivan*

Title

**Engineer Tech**

Date

**5/26/94**

(This space for Federal or State Office use)

Approved by

Conditions of approval, if any:

Title

APPROVED  
AS AMENDED

JUN 01 1994

Title 18 U.S.C. Section 1001, makes it a crime for any person knowingly and willfully to make to any department or agency of the United States any false, fictitious or fraudulent statements or representations as to any matter within its jurisdiction.

DISTRICT MANAGER

# **MERRION OIL & GAS CORPORATION**

## **P&A PROCEDURE**

April 27, 1994

<b>Well:</b>	<b>Hickman A2</b>	<b>Field:</b>	Gallegos Gallup
<b>Location:</b>	1980 fsl & 660 fwl (ne sw) Sec 3, T26N, R12W San Juan County, New Mexico	<b>Elevation:</b>	6049' RKB 6039' GR
		<b>By:</b>	Margi Sullivan

### **Procedure:**

#### **Prior to Move-in**

1. Check wellsite for anchors.
2. File sundry notice to BLM for P&A. (Also need to file sundry after P&A work has been completed.)

#### **Pull Downhole Equipment**

3. MIRU PU, Blow down tubing & casing kill well with water if necessary (A 8.33 ppg plugging fluid exceeds the exposed reservoir pressure.) NU BOP. Test BOP.
4. Unset 2 3/8" EUE 4.7# J-55 tbg. Attempt to unset Baker EOJ 5 1/2" Packer set @ 5106'.
5. If packer unsets, pull out of hole, tally pipe, visually inspect condition and replace bad joints as necessary.
6. If unable to unset packer, rig up wireline backoff truck. Cut 2 3/8" tbg above packer. POOH with cut off tbg.

#### **P&A Well**

7. **Plug #1 (Gallup Perfs):** RIH with open ended tubing to PBTD @ 5220'. Mix 60 sx (70.8 cu ft) Class 'B' cement, spot a balance plug over the Gallup perfs. (50% excess cmt, long plug). POH and WOC. RIH and tag cement. Load well with water, circulate clean then pressure test casing to 500#.

8. **Plug #2 (Top of Liner):** POH to 4093', Mix 28 sx (33.04 cu ft) Class 'B' cement, spot balance plug from 4093' to 3993' to cover top of liner. (50' excess cement) POOH with workstring.
9. **Plug #3 (MV Top):** RU wireline, perforate 4 holes @ 2254', TIH with CICR and set @ 2204'. Sting into CR, mix and pump 58 sx (68.44 cu ft) Class 'B' cement to squeeze perfs @ 2254'. (50' extra cmt in csg and 100% excess between csg and hole). Sting out of CR, spot 3 sx cmt on top of retainer, (13' of cmt) POOH with workstring. Pressure test casing to 500#.
10. **Plug #4 (PC Top):** Perf 2 holes @ 1410', TIH with open ended tubing to 1410'. Mix 69 sx (81.42 cu ft) Class 'B' cement, spot balance plug from 1410' to 1310'. (50' extra cmt in csg and 100% excess between csg and hole). POOH and LD workstring. Pressure test casing to 500#.
11. **Plug #5 (Surface):** Perf 2 holes @ 407', establish circulation out bradenhead. Mix and pump cement down 7 5/8" casing until good cement circ to surface, (approx. 173 sx or 204.14 cu ft). Shut in well and WOC.
12. ND BOP and cut off wellhead, install P&A marker. RD, MOL.
13. Restore location per BLM stipulations.

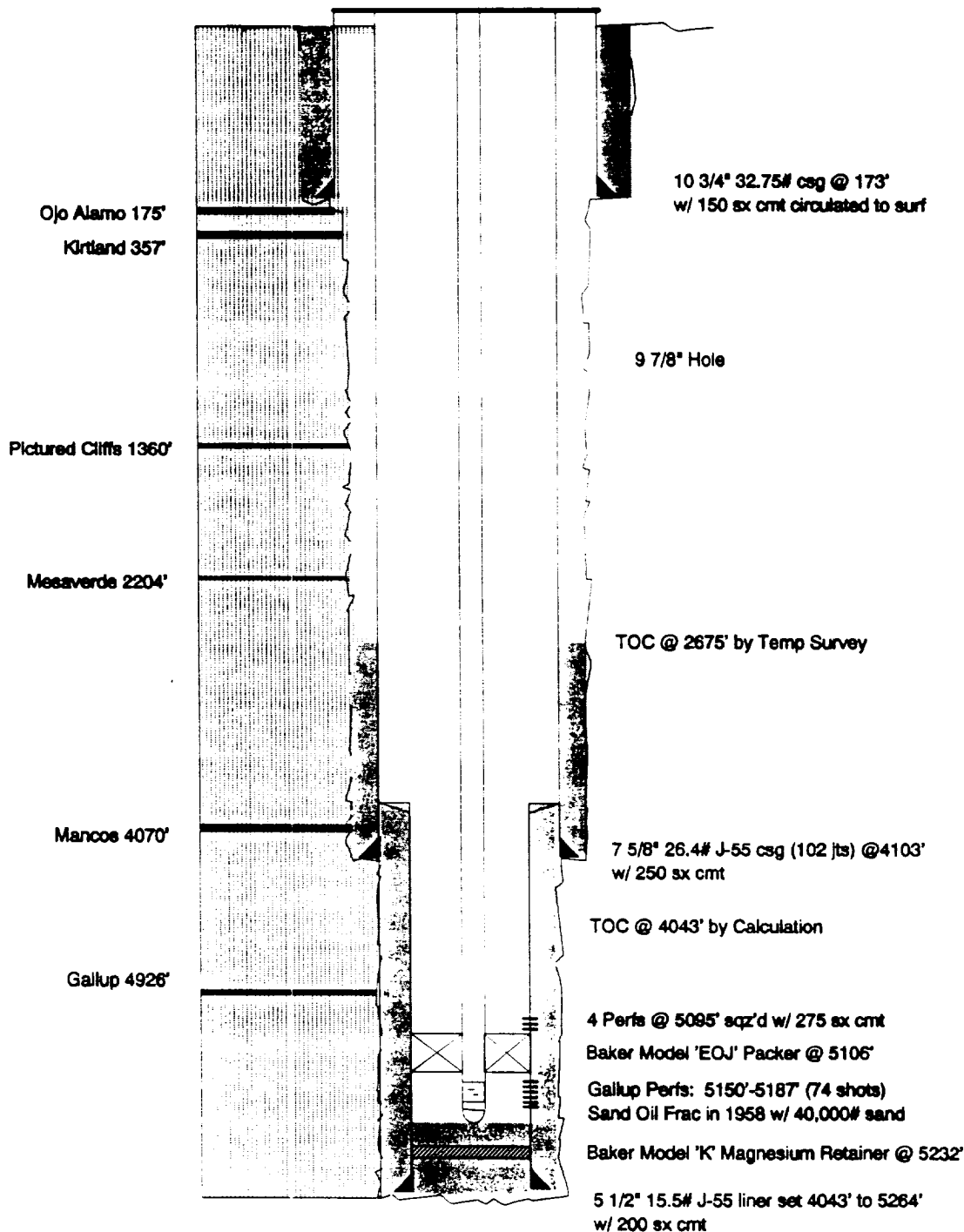
# Hickman A2

## Wellbore Schematic

4-15-94

OPERATOR: Merrion Oil & Gas  
FIELD: Gallegos Gallup  
LOCATION: Sec. 3, T26N, R12W  
San Juan County, New Mexico

ELEVATION: 6039' GR  
+10' KB



### CAPACITIES:

TBG: 2 3/8"  
CSG: 7 5/8"  
LINER: 5 1/2"

### BBL/FT:

.00387  
.0471  
.0238

### FT/BBL:

258.65  
21.20  
42.01

### FT3/FT:

.02171  
.2648  
.1336

### TUBING DETAIL:

167 jts 2 3/8" 4.7# EUE  
J-55 tbg set @ 5207'  
Perf Nipple @ 5172'

TD: 5264'

PBTD: 5220'

# Hickman A2

## Wellbore Schematic after Plugging

4-29-94

OPERATOR: Merion Oil & Gas  
 FIELD: Gallegos Gallup  
 LOCATION: Sec. 3, T26N, R12W  
 San Juan County, New Mexico

ELEVATION: 6039' GR  
 +10' KB

