

submitted in lieu of Form 3160-5

UNITED STATES
DEPARTMENT OF THE INTERIOR
BUREAU OF LAND MANAGEMENT

Sundry Notices and Reports on Wells - 2 PM 12-43

1. Type of Well
GAS

2. Name of Operator
MERIDIAN OIL

3. Address & Phone No. of Operator
PO Box 4289, Farmington, NM 87499 (505) 326-9700

4. Location of Well, Footage, Sec., T, R, M
1450' FNL, 990' FEL, Sec. 3, T-26-N, R-9-W, NMPM
H

Lease Number
SF-078135
6. If Indian, All. or
Tribe Name
7. Unit Agreement Name
Huerfanito Unit
8. Well Name & Number
Huerfanito Unit #19
9. API Well No.
30-045-06068
10. Field and Pool
Basin Fruitland Coal
11. County and State
San Juan Co, NM

12. CHECK APPROPRIATE BOX TO INDICATE NATURE OF NOTICE, REPORT, OTHER DATA

Type of Submission

☒ Notice of Intent
☐ Subsequent Report
☐ Final Abandonment

Type of Action

☐ Abandonment ☐ Change of Plans
☐ Recompletion ☐ New Construction
☐ Plugging Back ☐ Non-Routine Fracturing
☐ Casing Repair ☐ Water Shut off
☐ Altering Casing ☐ Conversion to Injection
☒ Other - Stimulate

13. Describe Proposed or Completed Operations

It is intended to reperforate and fracture stimulate the existing Fruitland Coal formation of the subject well according to the attached procedure and wellbore diagram.

14. I hereby certify that the foregoing is true and correct.

Signed Nancy Olthmann (PMP1) Title Regulatory Administrator Date 7/1/96

(This space for Federal or State Office use)

APPROVED BY _____ Title _____
CONDITION OF APPROVAL, if any:

APPROVED

JUL 02 1996

DISTRICT MANAGER

NMOCD

HUERFANITO UNIT #19 FRTC
Workover Procedure
H 3 26 9
San Juan County, N.M.
Lat-Long: 36.520386 - 107.769989

1. Comply to all NMOCD, BLM, & MOI rules & regulations. MOL and RU completion rig. NU 6" 900 series BOP w/flow tee and stripping head. NU blooie line & 2-7/8" relief line.
2. Lower tbg to tag fill. If fill is above 2107', C.O. w/air/mist to 2112'. Set blanking plug in S.N. of 2-3/8" tbg @ 2075' & pressure test to 3000 psi. TOH.
3. Perf additional FRTC @ 2028'-26', 1976'-74', 1970'-68', 1942'-40', 1922'-16' w/2 spf. Total 28 holes. Perf using 3-1/8" hollow steel carrier guns loaded w/Owen HSC 13 gm. charges phased at 180 degrees & 2 spf. Average perf dia. = 0.48". Average penetration is 18" in Berea.
4. TIH w/5-1/2" straddle pkr on 2-3/8" tbg & breakdown each new set of perfs using a total of 1000 gal. 15% HCL acid. (1 gal/1000 corrosion inhibitor). Max. pressure is 4500 psi.. TOH.
5. Spot and fill 3-400 bbl. frac tanks w/1% KCL water. Filter all water to 25 microns. Two tanks are for gel & one tank for breakdown water. Usable water required for frac is 500 bbls.
6. TIH w/5-1/2" pkr on 3-1/2" 9.3# ~~2-1/2"~~^{N-80} w/shaved collars (4.25" O.D. 2.992" I.D.) rental frac string & set @ 1850'. Load backside w/1% KCL water. Pressure backside to 300 psi & monitor during frac job.
7. Fracture treat FRTC down frac string w/69,000 gals. of 70 quality foam using 30# gel as the base fluid & 130,000# 20/40 Arizona sand. Pump at 50 BPM. Monitor bottomhole & surface treating pressures, rate, foam quality, & sand concentration with computer van. Sand to be tagged w/ 0.4 mCi/1000# Ir-192 tracer. Max. pressure is 6000 psi & estimated treating pressure is 4500 psi. Treat per the following schedule:

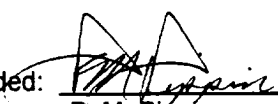
| <u>Stage</u> | <u>Foam Vol. (Gals.)</u> | <u>Gel Vol. (Gals.)</u> | <u>Sand Vol. (lbs.)</u> |
|--------------|------------------------------|-----------------------------|-----------------------------|
| Pad | 20,000 | 6,000 | — |
| 1.0 ppg | 10,000 | 3,000 | 10,000 |
| 2.0 ppg | 10,000 | 3,000 | 20,000 |
| 3.0 ppg | 20,000 | 6,000 | 60,000 |
| 4.0 ppg | 5,000 | 1,500 | 20,000 |
| 5.0 ppg | 4,000 | 1,200 | 20,000 |
| Flush | (675) | (202) | 0 |
| Totals | 69,000 | 20,700 | 130,000# |

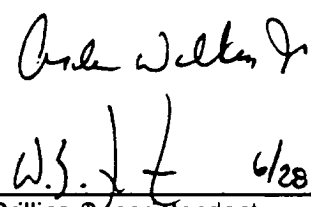
Shut well in after frac for six hours in an attempt to allow the gel to break. Treat frac fluid w/the following additives per 1000 gallons:

- | | |
|----------------------|------------------------------------------|
| * 30# J-48 | (Guar Gel mix in full tank - 16,000 gal) |
| * 1.0 gal. Aqua Flow | (Non-ionic Surfactant mix in full tank) |
| * 1.0# GVW-3 | (Enzyme Breaker mix on fly) |
| * 1.0# B - 5 | (Breaker mix on fly) |
| * 5.0 gal Fracfoam I | (Foamer mix on fly) |
| * 0.38# FracCide 20 | (Bacteriacide mix on full tank) |

HUERFANITO UNIT #19 FRTC - FRAC EXISTING FRTC

8. Open well through choke manifold & monitor flow. Flow @ 20 bbl/hr, or less if sand is observed. Take pitot gauges when possible.
9. Release pkr & TOH w/frac string. TIH w/4-3/4" bit on 2-3/8" tbg & clean out to 2112' w/air/mist.
10. Monitor gas & water returns & take pitot gauges when possible.
11. When wellbore is sufficiently clean, TOH & run after frac gamma-ray log & perf eff. log from 2112'-1600'.
12. TIH w/2-3/8" tbg w/standard seating nipple one joint off bottom & again cleanout to 2112'. When wellbore is sufficiently clean, land tbg @ 2000' KB. Take final water & gas samples & rates.
13. ND BOP & NU wellhead & tree. Rig down & release rig.

Recommended:  6/20/96
P. M. Pippin

 6/21/96
Approve: W.S. J. F. 6/28/96
Drilling Superintendent

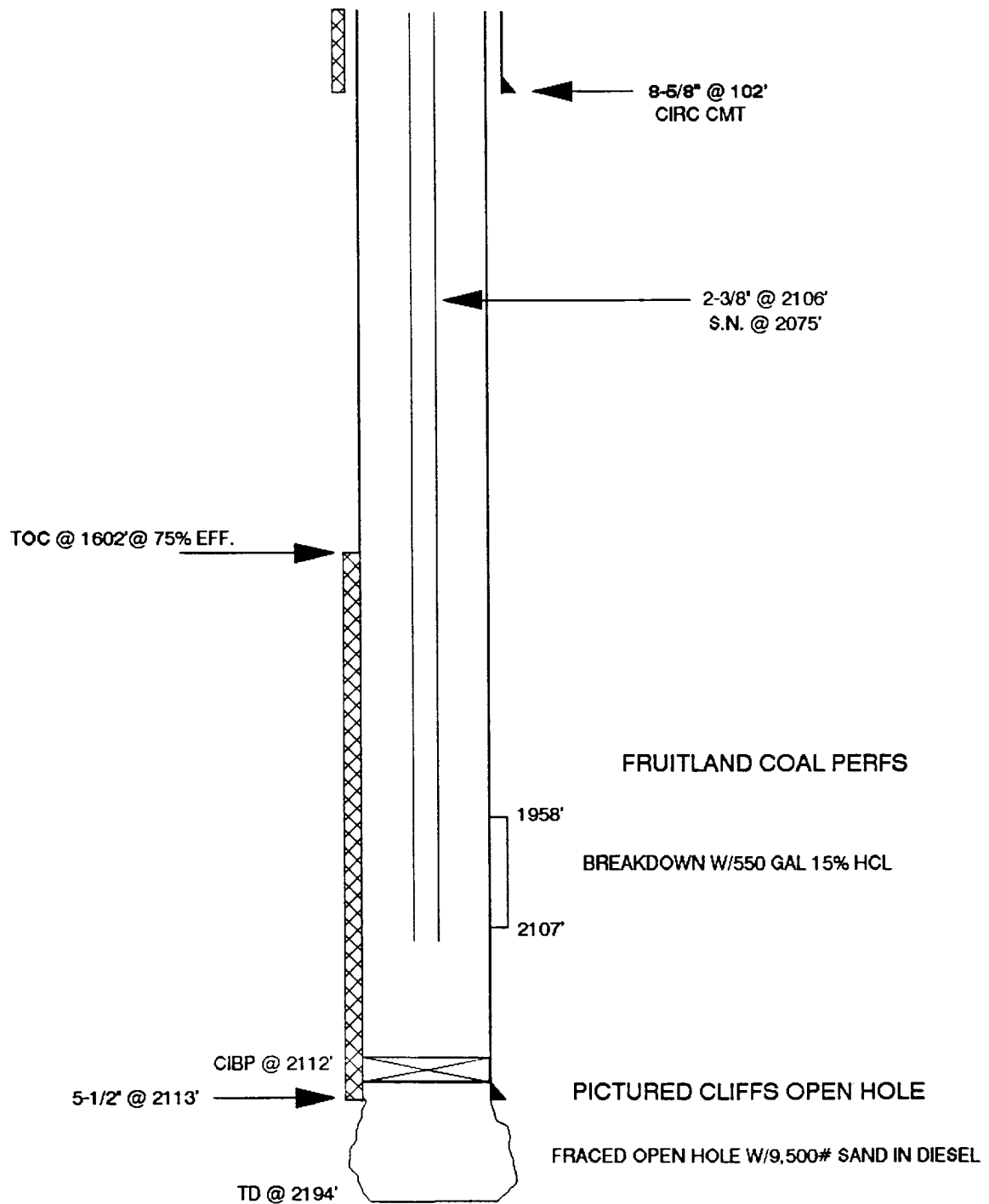
VENDORS:

| | | |
|-------------|--------------|----------|
| Wireline: | Basin | 327-5244 |
| Fracturing: | BJ | 327-6222 |
| RA Tagging: | Pro-Technics | 326-7133 |
| Packers: | Schlum. | 325-5006 |

PMP

HUERFANTIO UNIT #19 FRTC

UNIT H SECTION 3 T26N R9W
SAN JUAN COUNTY, NEW MEXICO



Pertinent Data Sheet - HUERFANITO UNIT #19 FRTC

Location: 1450' FNL & 990' FEL, Unit H, Section 3, T26N, R09W, San Juan County, New Mexico

| | | | | | |
|----------------------|----------------------|--------------------------|--------------------|---------------------|-------|
| <u>Field:</u> | Basin Fruitland Coal | <u>Elevation:</u> | 6365' GL 10' KB | <u>TD:</u> | 2194' |
| | | | | <u>PBTD:</u> | 2112' |

Completed: 7-22-55 **Spud Date:** 6-11-55

Recompleted: 11-8-90

DP #: 49310B

Lease: Fed. SF-078135

GWI: 100%

NRI: 72%

Prop#: 071076324

Initial Potential: Pitot Gauge FRTC = 21 MCF/D

Casing Record:

| <u>Hole Size</u> | <u>Csg Size</u> | <u>Wt. & Grade</u> | <u>Depth Set</u> | <u>Cement</u> | <u>Cement (Top)</u> |
|------------------|-----------------|------------------------|------------------|---------------|---------------------|
| e12-1/4" | 8-5/8" | 24# J-55 | 102' | 80 sx. | Circ Cmt |
| e7-7/8" | 5-1/2" | 14# J-55 | 2113' | 100 sx. | 1602' @ 75% Eff. |

Tubing Record:

| | | | |
|------------------|------------------------|------------------|--------|
| <u>Tbg. Size</u> | <u>Wt. & Grade</u> | <u>Depth Set</u> | |
| 2-3/8" | 4.70# J-55 | 2106' | 66 Jts |
| | SN @ | 2075' | |

Formation Tops:

| | |
|------------------|-------|
| Ojo Alamo: | 1237' |
| Kirtland Shale: | 1409' |
| Fruitland: | 1750' |
| Pictured Cliffs: | 2120' |

Logging Record: GRN ('55), Cased Hole Nuetron (90)

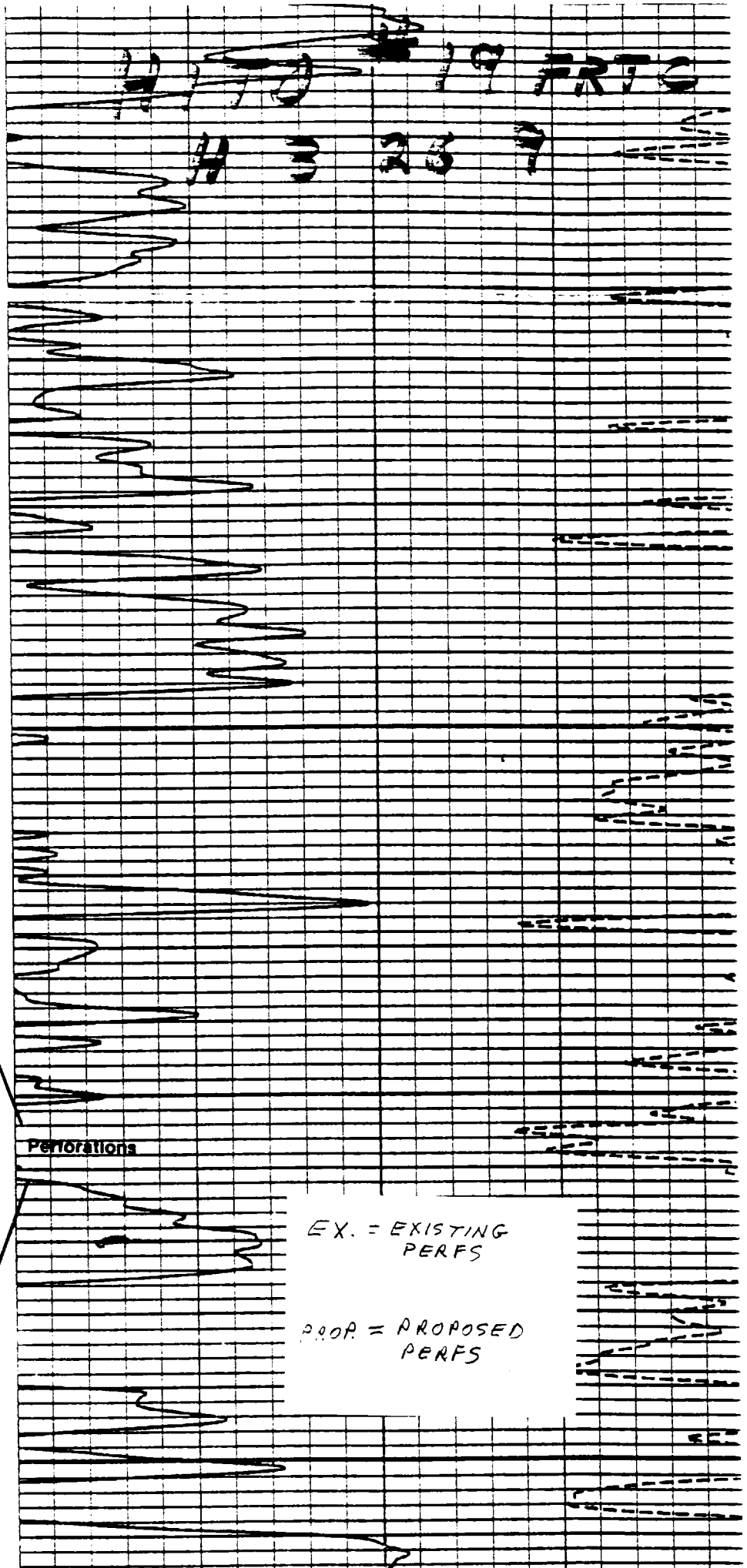
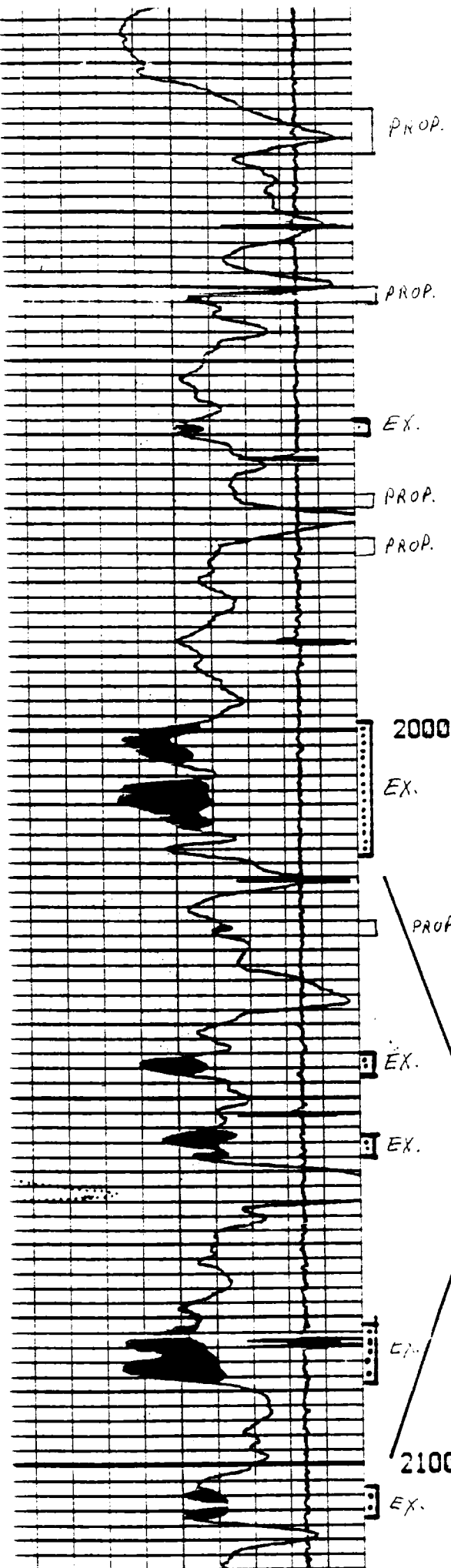
Stimulation: Fraced PC open hole w/9,500# sand in diesel.

Workover History: 11/8/90: Set CIBP @ 2112' & pressure tested to 1500 psi. Perf FRTC @ 1958'-60', 1999'-2017', 2044'-47', 2055'-58', 2081'-89', 2103'-07' w/2 spf. Broke down perfs w/550 gal 15% HCL acid & SPIT tool. Swabbed well 1 day.

Production history: FRTC 1st delivered 8-6-91. SBHP = 295 psi @ 2100'. Current FRTC capacity is 32 MCF/D. PC cum is 356 MMCF. FRTC cum is 1.6 MMCF. This well only produced for 2 mo in 1991, but was redelivered in 3/96 @ about 30 MCF/D.

Pipeline: EPNG

470 19 FRTG
H 3 23 7



PROP.

PROP.

EX.

PROP.

PROP.

2000

EX.

PROP

EX.

EX.

Perforations

EX. = EXISTING
PERFS

PROP = PROPOSED
PERFS

EX.

2100

EX.