

STATE OF NEW MEXICO
ENERGY, MINERALS AND NATURAL RESOURCES DEPARTMENT
OIL CONSERVATION DIVISION

OK
(5)

GARREY CARRUTHERS
GOVERNOR

POST OFFICE BOX 2088
STATE LAND OFFICE BUILDING
SANTA FE, NEW MEXICO 87504
(505) 827-5800

May 29, 1990

RECEIVED
JUN 4 1990
OIL CON. DIV.
DIST. 3

Meridian Oil, Inc.
P.O. Box 4289
Farmington, NM 87499-4289

Attention: Peggy Bradfield

Administrative Order NSL-2803

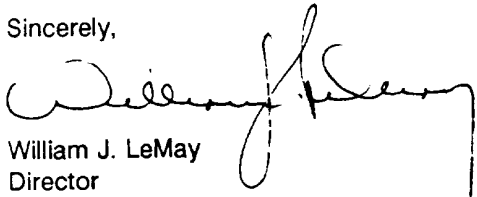
Dear Ms. Bradfield:

Reference is made to your application dated May 7, 1990 for a non-standard Basin-Fruitland coal gas well location for your existing San Juan 27-80 Unit Well No. 6 which was drilled in 1957 and completed in the South Blanco Pictured Cliffs Pool at a standard gas well location 1650 feet from the North line and 990 feet from the West line (Unit E) of Section 11, Township 27 North, Range 8 West, NMPM, San Juan County, New Mexico.

It is my understanding that the Pictured Cliffs zone will be properly plugged back and said well will be recompleted to the Basin-Fruitland Coal Gas Pool, which pursuant to the Special Rules and Regulations for the Basin-Fruitland Coal Gas Pool as promulgated by Division Order No. R-8768, is unorthodox. Further, the W/2 of said Section 11 shall be dedicated to the well forming a standard 320-acre gas spacing and proration unit for said pool.

By the authority granted me under the provisions of Rule 8 of said Division Order No. R-8768, the above-described unorthodox coal gas well location is hereby approved.

Sincerely,


William J. LeMay
Director

WJL/MES/ag

cc: Oil Conservation Division - Aztec
US Bureau of Land Management - Farmington



STATE OF NEW MEXICO
ENERGY AND MINERALS DEPARTMENT
OIL CONSERVATION DIVISION
AZTEC DISTRICT OFFICE

SARREY CARRUTHERS
GOVERNOR

1000 RIO GRAZOS ROAD
AZTEC, NEW MEXICO 87410
(505) 334-6178

Date: 5-16-90

Oil Conservation Division
P.O. Box 2088
Santa Fe, NM 87504-2088

Re: Proposed MC _____
Proposed DHC _____
Proposed NSL & _____
Proposed SWD _____
Proposed WFX _____
Proposed PMX _____

Gentlemen:

I have examined the application dated 5-8-90
for the Meridian Oil Inc. S.J. 27-8 Unit #6
Operator Lease & Well No.

E-11-27N-8W and my recommendations are as follows:
Unit, S-T-R

Approve

Yours truly,

Ernie Busch

MERIDIAN OIL

May 7, 1990

RECEIVED
MAY 08 1990
OIL CON. DIV.
DIST. 3

Certified Mail

Mr. William LeMay
New Mexico Oil Conservation Division
Post Office Box 2088
Santa Fe, New Mexico 87503

RE: San Juan 27-8 #6-11
1650'FNL, 990'FWL
Section 11, T-27-N, R-08-W
San Juan County, New Mexico

Dear Mr. LeMay:

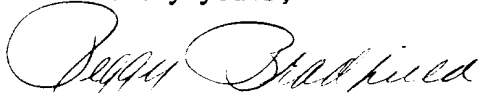
This is a request for administrative approval for a non-standard gas well location in the Basin Fruitland Pool.

Meridian Oil intends to plugback and recomplete the San Juan 27-8 #6-11 well from the Pictured Cliffs pool to the Basin Fruitland Coal Pool. The current location of this well is 1650'FNL, 990'FWL, Section 11, T-27-N, R-08-W, San Juan County, New Mexico. The well is considered non-standard due to the NE-SW dedicated pattern established for the Basin Fruitland Coal Pool. To comply with the New Mexico Oil Conservation Division rules, Meridian is submitting the following for your approval of this non-standard location:

1. C-102 plat showing location of the well;
2. Plat showing offset owners/operators;
3. Affidavit of notification of offset owners/operators;
4. Copy of Well Completion Log for original completion.

A copy of this application is being submitted to all offset owners/operators by certified mail with a request that they furnish your Santa Fe office with a Waiver of Objection, and return one copy to this office.

Sincerely yours,



Peggy Bradfield
encl.

WAIVER

_____ hereby waives objection to Meridian Oil Inc.'s application for a non-standard location for their San Juan 27-8 #6-11 as proposed above.

By: _____ Date: _____

xc: Mesa Limited Partnership
R & G Drilling Company
Arco Oil & Gas Company
Nassau Resources

Submit to Assessor -
District Office
State Lease - 4 copies
Fee Lease - 3 copies

State of New Mexico
Energy, Minerals and Natural Resources Department

Form C-182
Revised 1-1-89

OIL CONSERVATION DIVISION
P.O. Box 2088
Santa Fe, New Mexico 87504-2088

DISTRICT I
P.O. Box 1900, Hobbs, NM 88240

DISTRICT II
P.O. Drawer 00, Aztec, NM 88210

DISTRICT III
1000 Rio Arriba St., Aztec, NM 87410

WELL LOCATION AND ACREAGE DEDICATION PLAT
All Distances must be from the outer boundaries of the section

Operator Meridian Oil Inc.		Lease San Juan 27-8 (NM-019401)		Well No. 6-11
Unit Layer E	Section 11	Township 27 North	Range 8 West	County San Juan
Actual Surface Location of Well: 1650 feet from the North line and 990 feet from the West line				
Ground level elev. 6654'	Producing Formation Fruitland Coal		Pool Basin	Dedicated Acreage 320 Acres

- Outline the acreage dedicated to the subject well by enclosed points or boundary marks on the plat below.
- If more than one tract is dedicated to the well, outline each and identify the ownership thereof (both as to working interest and royalty).
- If more than one tract of different ownership is dedicated to the well, have the interest of all owners been consolidated by commutation, unitization, force-pooling, etc.?
☐ Yes ☐ No If answer is "yes" type of consolidation _____
If answer is "no" list the owners and tract descriptions which have jointly been consolidated. (Use reverse side of this form if necessary.) _____
No alternate well be assigned to the well until all interests have been consolidated (by commutation, unitization, force-pooling, or otherwise) or until a non-consolidated unit, eliminating such interest, has been approved by the Division.

Not re-surveyed;
prepared from a plat by
Stephen Kinney 8-26-57

1650'

990'

RECEIVED
MAY 08 1990
OIL CON. DIV.
DIST. 3

OPERATOR CERTIFICATION

I hereby certify that the information contained herein is true and complete to the best of my knowledge and belief.

Peggy Bradfield
Signature

Peggy Bradfield

Printed Name
Regulatory Affairs

Position
Meridian Oil Inc.

Company
4-4-90

Date

SURVEYOR CERTIFICATION

I hereby certify that the well location on this plat was plotted from field or aerial surveys made by me or under supervision, and that the same is true correct to the best of my knowledge and belief.

4-3-90

Date Surveyed



Neale

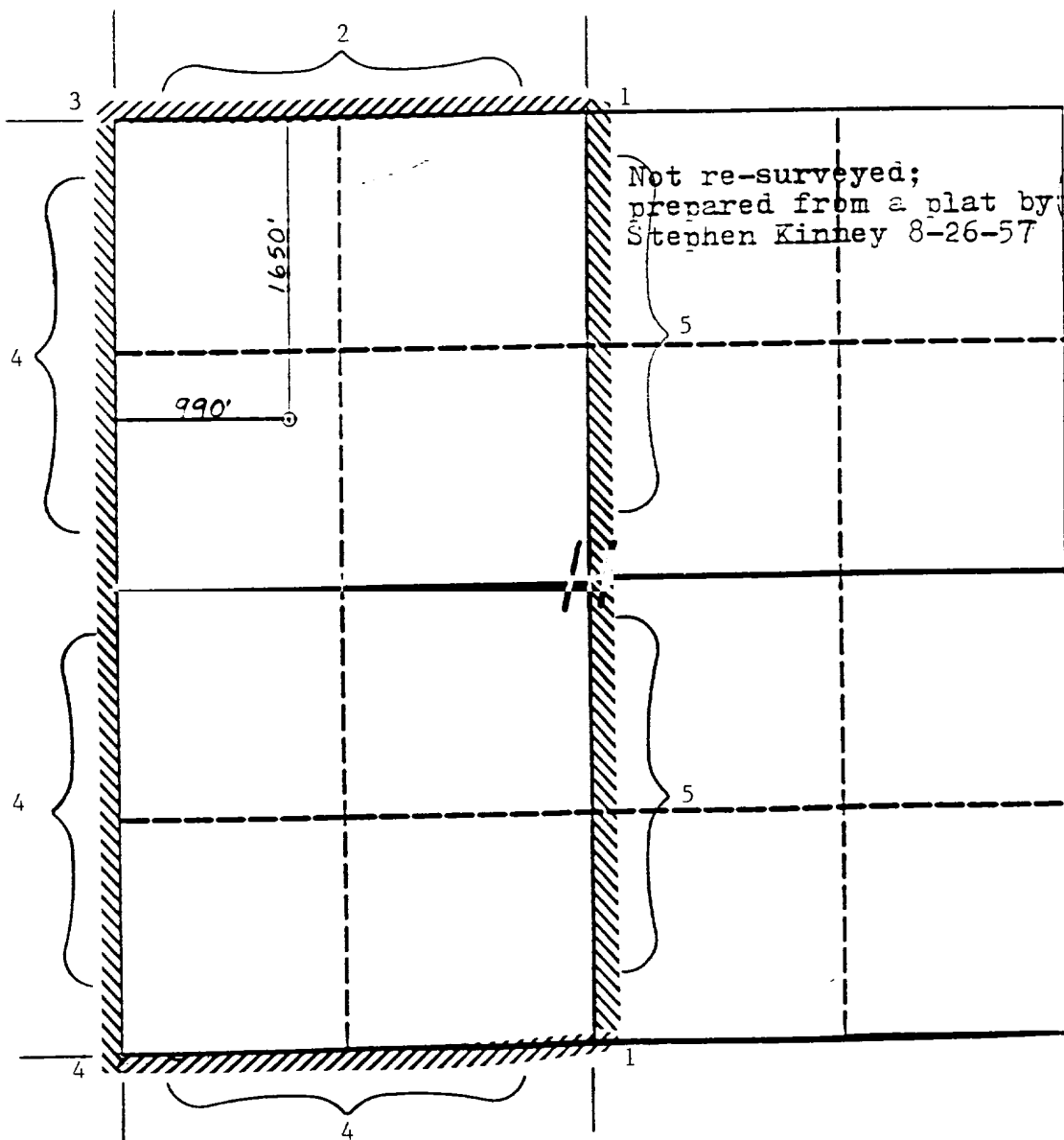
MERIDIAN OIL INC

Well Name San Juan 27-8 #6-11

Footage 1650' FNL: 990' FWL

APPLICATION FOR NON-STANDARD LOCATION

County San Juan State New Mexico Section 11 Township 27N Range 8W



Remarks 1) Meridian Oil Inc.
2) Mesa Limited Partnership
3) R & G Drilling Company
4) ARCO Oil & Gas Company
5) Nassau Resources

San Juan 27-8 #6-11
1650'FNL, 990'FWL
Section 11, T-27-N, R-08-W
San Juan County, New Mexico

I hereby certify that the following offset owners/operators have been mailed notification of our application for administrative approval for non-standard gas well location for the plugback and recompletion of the above well.

Mesa Limited Partnership
P.O. Box 2009
Amarillo, TX 79189-2009

R & G Drilling Company
P.O. Box 0158
Thousand Palms, CA 92276

ARCO Oil & Gas Company
P.O. Box 2819
Dallas, TX 75221

Nassau Resources
650S. Cherry St., Suite 1225
Denver, CO 80222



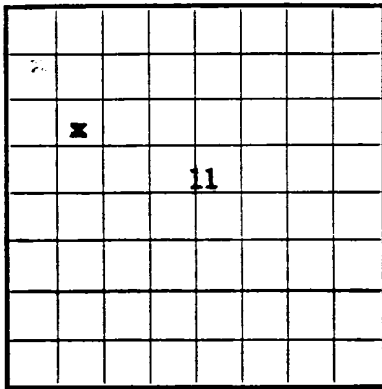
Peggy Bradfield
May 7, 1990

San Juan County
State of New Mexico

My commission expires August 17, 1992

Form 9-530

U. S. LAND OFFICE Santa Fe
SERIAL NUMBER MI-019401
LEASE OR PERMIT TO PROSPECT _____



LOCATE WELL CORRECTLY

UNITED STATES
DEPARTMENT OF THE INTERIOR
GEOLOGICAL SURVEY

LOG OF OIL OR GAS WELL

Company Northwest Production Corporation Address 520 Simms Bldg., Albuquerque, N. M.
Lessor or Tract San Juan 27-8 Field So Blanco PC State New Mexico
Well No. 6-11 Sec. 11 T. 27N R. 8W Meridian 100M County Santa Fe
Location 1650 ft. (N) of N Line and 990 ft. (E) of W Line of Section 11 Elevation 6654 ungr
(Denote gas by G)

The information given herewith is a complete and correct record of the well and all work done thereon so far as can be determined from all available records.

Signed RAY PHILLIPS
Ray Phillips

Date December 6, 1957 Title Asst. Mgr. Prod Operations

The summary on this page is for the condition of the well at above date.

Commenced drilling October 30, 1957 Finished drilling November 28, 1957

OIL OR GAS SANDS OR ZONES

(Denote gas by G)

No. 1, from 2930 to 2972 G No. 4, from _____ to _____
No. 2, from _____ to _____ No. 5, from _____ to _____
No. 3, from _____ to _____ No. 6, from _____ to _____

IMPORTANT WATER SANDS

No. 1 2930 to 2972 G No. 2 2972 to 2973 G No. 3 2973 to 2974 G
No. 4 2974 to 2975 G No. 5 2975 to 2976 G No. 6 2976 to 2977 G
No. 7 2977 to 2978 G No. 8 2978 to 2979 G No. 9 2979 to 2980 G
No. 10 2980 to 2981 G No. 11 2981 to 2982 G No. 12 2982 to 2983 G
No. 13 2983 to 2984 G No. 14 2984 to 2985 G No. 15 2985 to 2986 G
No. 16 2986 to 2987 G No. 17 2987 to 2988 G No. 18 2988 to 2989 G
No. 19 2989 to 2990 G No. 20 2990 to 2991 G No. 21 2991 to 2992 G
No. 22 2992 to 2993 G No. 23 2993 to 2994 G No. 24 2994 to 2995 G
No. 25 2995 to 2996 G No. 26 2996 to 2997 G No. 27 2997 to 2998 G
No. 28 2998 to 2999 G No. 29 2999 to 3000 G No. 30 3000 to 3001 G
No. 31 3001 to 3002 G No. 32 3002 to 3003 G No. 33 3003 to 3004 G
No. 34 3004 to 3005 G No. 35 3005 to 3006 G No. 36 3006 to 3007 G
No. 37 3007 to 3008 G No. 38 3008 to 3009 G No. 39 3009 to 3010 G
No. 40 3010 to 3011 G No. 41 3011 to 3012 G No. 42 3012 to 3013 G
No. 43 3013 to 3014 G No. 44 3014 to 3015 G No. 45 3015 to 3016 G
No. 46 3016 to 3017 G No. 47 3017 to 3018 G No. 48 3018 to 3019 G
No. 49 3019 to 3020 G No. 50 3020 to 3021 G No. 51 3021 to 3022 G
No. 52 3022 to 3023 G No. 53 3023 to 3024 G No. 54 3024 to 3025 G
No. 55 3025 to 3026 G No. 56 3026 to 3027 G No. 57 3027 to 3028 G
No. 58 3028 to 3029 G No. 59 3029 to 3030 G No. 60 3030 to 3031 G
No. 61 3031 to 3032 G No. 62 3032 to 3033 G No. 63 3033 to 3034 G
No. 64 3034 to 3035 G No. 65 3035 to 3036 G No. 66 3036 to 3037 G
No. 67 3037 to 3038 G No. 68 3038 to 3039 G No. 69 3039 to 3040 G
No. 70 3040 to 3041 G No. 71 3041 to 3042 G No. 72 3042 to 3043 G
No. 73 3043 to 3044 G No. 74 3044 to 3045 G No. 75 3045 to 3046 G
No. 76 3046 to 3047 G No. 77 3047 to 3048 G No. 78 3048 to 3049 G
No. 79 3049 to 3050 G No. 80 3050 to 3051 G No. 81 3051 to 3052 G
No. 82 3052 to 3053 G No. 83 3053 to 3054 G No. 84 3054 to 3055 G
No. 85 3055 to 3056 G No. 86 3056 to 3057 G No. 87 3057 to 3058 G
No. 88 3058 to 3059 G No. 89 3059 to 3060 G No. 90 3060 to 3061 G
No. 91 3061 to 3062 G No. 92 3062 to 3063 G No. 93 3063 to 3064 G
No. 94 3064 to 3065 G No. 95 3065 to 3066 G No. 96 3066 to 3067 G
No. 97 3067 to 3068 G No. 98 3068 to 3069 G No. 99 3069 to 3070 G
No. 100 3070 to 3071 G No. 101 3071 to 3072 G No. 102 3072 to 3073 G
No. 103 3073 to 3074 G No. 104 3074 to 3075 G No. 105 3075 to 3076 G
No. 106 3076 to 3077 G No. 107 3077 to 3078 G No. 108 3078 to 3079 G
No. 109 3079 to 3080 G No. 110 3080 to 3081 G No. 111 3081 to 3082 G
No. 112 3082 to 3083 G No. 113 3083 to 3084 G No. 114 3084 to 3085 G
No. 115 3085 to 3086 G No. 116 3086 to 3087 G No. 117 3087 to 3088 G
No. 118 3088 to 3089 G No. 119 3089 to 3090 G No. 120 3090 to 3091 G
No. 121 3091 to 3092 G No. 122 3092 to 3093 G No. 123 3093 to 3094 G
No. 124 3094 to 3095 G No. 125 3095 to 3096 G No. 126 3096 to 3097 G
No. 127 3097 to 3098 G No. 128 3098 to 3099 G No. 129 3099 to 3100 G
No. 130 3100 to 3101 G No. 131 3101 to 3102 G No. 132 3102 to 3103 G
No. 133 3103 to 3104 G No. 134 3104 to 3105 G No. 135 3105 to 3106 G
No. 136 3106 to 3107 G No. 137 3107 to 3108 G No. 138 3108 to 3109 G
No. 139 3109 to 3110 G No. 140 3110 to 3111 G No. 141 3111 to 3112 G
No. 142 3112 to 3113 G No. 143 3113 to 3114 G No. 144 3114 to 3115 G
No. 145 3115 to 3116 G No. 146 3116 to 3117 G No. 147 3117 to 3118 G
No. 148 3118 to 3119 G No. 149 3119 to 3120 G No. 150 3120 to 3121 G
No. 151 3121 to 3122 G No. 152 3122 to 3123 G No. 153 3123 to 3124 G
No. 154 3124 to 3125 G No. 155 3125 to 3126 G No. 156 3126 to 3127 G
No. 157 3127 to 3128 G No. 158 3128 to 3129 G No. 159 3129 to 3130 G
No. 160 3130 to 3131 G No. 161 3131 to 3132 G No. 162 3132 to 3133 G
No. 163 3133 to 3134 G No. 164 3134 to 3135 G No. 165 3135 to 3136 G
No. 166 3136 to 3137 G No. 167 3137 to 3138 G No. 168 3138 to 3139 G
No. 169 3139 to 3140 G No. 170 3140 to 3141 G No. 171 3141 to 3142 G
No. 172 3142 to 3143 G No. 173 3143 to 3144 G No. 174 3144 to 3145 G
No. 175 3145 to 3146 G No. 176 3146 to 3147 G No. 177 3147 to 3148 G
No. 178 3148 to 3149 G No. 179 3149 to 3150 G No. 180 3150 to 3151 G
No. 181 3151 to 3152 G No. 182 3152 to 3153 G No. 183 3153 to 3154 G
No. 184 3154 to 3155 G No. 185 3155 to 3156 G No. 186 3156 to 3157 G
No. 187 3157 to 3158 G No. 188 3158 to 3159 G No. 189 3159 to 3160 G
No. 190 3160 to 3161 G No. 191 3161 to 3162 G No. 192 3162 to 3163 G
No. 193 3163 to 3164 G No. 194 3164 to 3165 G No. 195 3165 to 3166 G
No. 196 3166 to 3167 G No. 197 3167 to 3168 G No. 198 3168 to 3169 G
No. 199 3169 to 3170 G No. 200 3170 to 3171 G No. 201 3171 to 3172 G
No. 202 3172 to 3173 G No. 203 3173 to 3174 G No. 204 3174 to 3175 G
No. 205 3175 to 3176 G No. 206 3176 to 3177 G No. 207 3177 to 3178 G
No. 208 3178 to 3179 G No. 209 3179 to 3180 G No. 210 3180 to 3181 G
No. 211 3181 to 3182 G No. 212 3182 to 3183 G No. 213 3183 to 3184 G
No. 214 3184 to 3185 G No. 215 3185 to 3186 G No. 216 3186 to 3187 G
No. 217 3187 to 3188 G No. 218 3188 to 3189 G No. 219 3189 to 3190 G
No. 220 3190 to 3191 G No. 221 3191 to 3192 G No. 222 3192 to 3193 G
No. 223 3193 to 3194 G No. 224 3194 to 3195 G No. 225 3195 to 3196 G
No. 226 3196 to 3197 G No. 227 3197 to 3198 G No. 228 3198 to 3199 G
No. 229 3199 to 3200 G No. 230 3200 to 3201 G No. 231 3201 to 3202 G
No. 232 3202 to 3203 G No. 233 3203 to 3204 G No. 234 3204 to 3205 G
No. 235 3205 to 3206 G No. 236 3206 to 3207 G No. 237 3207 to 3208 G
No. 238 3208 to 3209 G No. 239 3209 to 3210 G No. 240 3210 to 3211 G
No. 241 3211 to 3212 G No. 242 3212 to 3213 G No. 243 3213 to 3214 G
No. 244 3214 to 3215 G No. 245 3215 to 3216 G No. 246 3216 to 3217 G
No. 247 3217 to 3218 G No. 248 3218 to 3219 G No. 249 3219 to 3220 G
No. 250 3220 to 3221 G No. 251 3221 to 3222 G No. 252 3222 to 3223 G
No. 253 3223 to 3224 G No. 254 3224 to 3225 G No. 255 3225 to 3226 G
No. 256 3226 to 3227 G No. 257 3227 to 3228 G No. 258 3228 to 3229 G
No. 259 3229 to 3230 G No. 260 3230 to 3231 G No. 261 3231 to 3232 G
No. 262 3232 to 3233 G No. 263 3233 to 3234 G No. 264 3234 to 3235 G
No. 265 3235 to 3236 G No. 266 3236 to 3237 G No. 267 3237 to 3238 G
No. 268 3238 to 3239 G No. 269 3239 to 3240 G No. 270 3240 to 3241 G
No. 271 3241 to 3242 G No. 272 3242 to 3243 G No. 273 3243 to 3244 G
No. 274 3244 to 3245 G No. 275 3245 to 3246 G No. 276 3246 to 3247 G
No. 277 3247 to 3248 G No. 278 3248 to 3249 G No. 279 3249 to 3250 G
No. 280 3250 to 3251 G No. 281 3251 to 3252 G No. 282 3252 to 3253 G
No. 283 3253 to 3254 G No. 284 3254 to 3255 G No. 285 3255 to 3256 G
No. 286 3256 to 3257 G No. 287 3257 to 3258 G No. 288 3258 to 3259 G
No. 289 3259 to 3260 G No. 290 3260 to 3261 G No. 291 3261 to 3262 G
No. 292 3262 to 3263 G No. 293 3263 to 3264 G No. 294 3264 to 3265 G
No. 295 3265 to 3266 G No. 296 3266 to 3267 G No. 297 3267 to 3268 G
No. 298 3268 to 3269 G No. 299 3269 to 3270 G No. 300 3270 to 3271 G
No. 301 3271 to 3272 G No. 302 3272 to 3273 G No. 303 3273 to 3274 G
No. 304 3274 to 3275 G No. 305 3275 to 3276 G No. 306 3276 to 3277 G
No. 307 3277 to 3278 G No. 308 3278 to 3279 G No. 309 3279 to 3280 G
No. 310 3280 to 3281 G No. 311 3281 to 3282 G No. 312 3282 to 3283 G
No. 313 3283 to 3284 G No. 314 3284 to 3285 G No. 315 3285 to 3286 G
No. 316 3286 to 3287 G No. 317 3287 to 3288 G No. 318 3288 to 3289 G
No. 319 3289 to 3290 G No. 320 3290 to 3291 G No. 321 3291 to 3292 G
No. 322 3292 to 3293 G No. 323 3293 to 3294 G No. 324 3294 to 3295 G
No. 325 3295 to 3296 G No. 326 3296 to 3297 G No. 327 3297 to 3298 G
No. 328 3298 to 3299 G No. 329 3299 to 3300 G No. 330 3300 to 3301 G
No. 331 3301 to 3302 G No. 332 3302 to 3303 G No. 333 3303 to 3304 G
No. 334 3304 to 3305 G No. 335 3305 to 3306 G No. 33