

UNITED STATES  
DEPARTMENT OF THE INTERIOR  
BUREAU OF LAND MANAGEMENT

SUBMIT IN TRIPLICATE\*  
(Other instructions on re-  
verse side)

Form approved.  
Budget Bureau No. 1004-0135  
Expires August 31, 1985

SUNDRY NOTICES AND REPORTS ON WELLS

(Do not use this form for proposals to drill or to deepen or plug back to a different reservoir.  
Use "APPLICATION FOR PERMIT—" for such proposals.)

RECEIVED

JAN 02 1986

1. OIL WELL ☐ GAS WELL ☒ OTHER

2. NAME OF OPERATOR  
Tenneco Oil Company

3. ADDRESS OF OPERATOR  
P. O. Box 3249, Englewood, CO 80155 BUREAU OF LAND MANAGEMENT  
FARMINGTON RESOURCE AREA

4. LOCATION OF WELL (Report location clearly and in accordance with any State requirements.\*  
See also space 17 below.)  
At surface

990' FNL, 1650' FEL

14. PERMIT NO.

15. ELEVATIONS (Show whether DF, RT, CR, etc.)

6858' GL

5. LEASE DESIGNATION AND SERIAL NO.

SF-078835

6. IF INDIAN, ALLOTTEE OR TRIBE NAME

7. UNIT AGREEMENT NAME

San Juan 28-7 Unit

8. FARM OR LEASE NAME

9. WELL NO.

4

10. FIELD AND POOL, OR WILDCAT

Blanco Pictured Cliffs

11. SEC., T., R., M., OR BLK. AND  
SURVEY OR AREA

Sec. 7, T27N R7W

12. COUNTY OR PARISH 13. STATE

Rio Arriba

NM

16. Check Appropriate Box To Indicate Nature of Notice, Report, or Other Data

NOTICE OF INTENTION TO:

TEST WATER SHUT-OFF

☐

PULL OR ALTER CASING

☐

FRACTURE TREAT

☐

MULTIPLE COMPLETE

☐

SHOOT OR ACIDIZE

☐

ABANDON\*

☐

REPAIR WELL

☐

CHANGE PLANE

☐

(Other)

SUBSEQUENT REPORT OF:

WATER SHUT-OFF

☐

REPAIRING WELL

☐

FRACTURE TREATMENT

☐

ALTERING CASING

☐

SHOOTING OR ACIDIZING

☐

ABANDONMENT\*

☐

(Other)

(NOTE: Report results of multiple completion on Well  
Completion or Recompletion Report and Log form.)

17. DESCRIBE PROPOSED OR COMPLETED OPERATIONS (Clearly state all pertinent details, and give pertinent dates, including estimated date of starting any proposed work. If well is directionally drilled, give subsurface locations and measured and true vertical depths for all markers and zones pertinent to this work.)\*

Tenneco requests permission to case and frac the Pictured Cliffs open hole according to the attached detailed procedure.

RECEIVED  
JUN 07 1986  
DIV. 3

18. I hereby certify that the foregoing is true and correct

SIGNED

*Scott McKinnis*

TITLE Senior Regulatory Analyst

DATE

12/27/85

(This space for Federal or State office use)

APPROVED BY

TITLE

CONDITIONS OF APPROVAL, IF ANY:

DATE

JAN 03 1986

*Franklin*

\*See Instructions on Reverse Side

NMOCG

Title 18 U.S.C. Section 1001, makes it a crime for any person knowingly and willfully to make to any department or agency of the United States any false, fictitious or fraudulent statements or representations as to any matter within its jurisdiction.

LEASE San Juan 28-7 Unit  
WELL NO. 4

CASING:

9 5/8 "OD, 36.0 LB, J-55CSG.W/ 150 SX  
TOC @ surf . HOLE SIZE 12 1/4 DT: 8/27/51  
REMARKS PT to 500 psi for 30 min  
7 "OD, 20&23 LB, J-55CSG.W/ 300/135 SX  
TOC @ 2800 . HOLE SIZE 8 3/4 DT: 9/8/51  
REMARKS 8/5/53 Perf @ 3400' & cmt w/135 sx  
"OD,        LB,        CSG.W/        DT:        SX  
TOC @        . HOLE SIZE        DATE         
REMARKS       

TUBING:

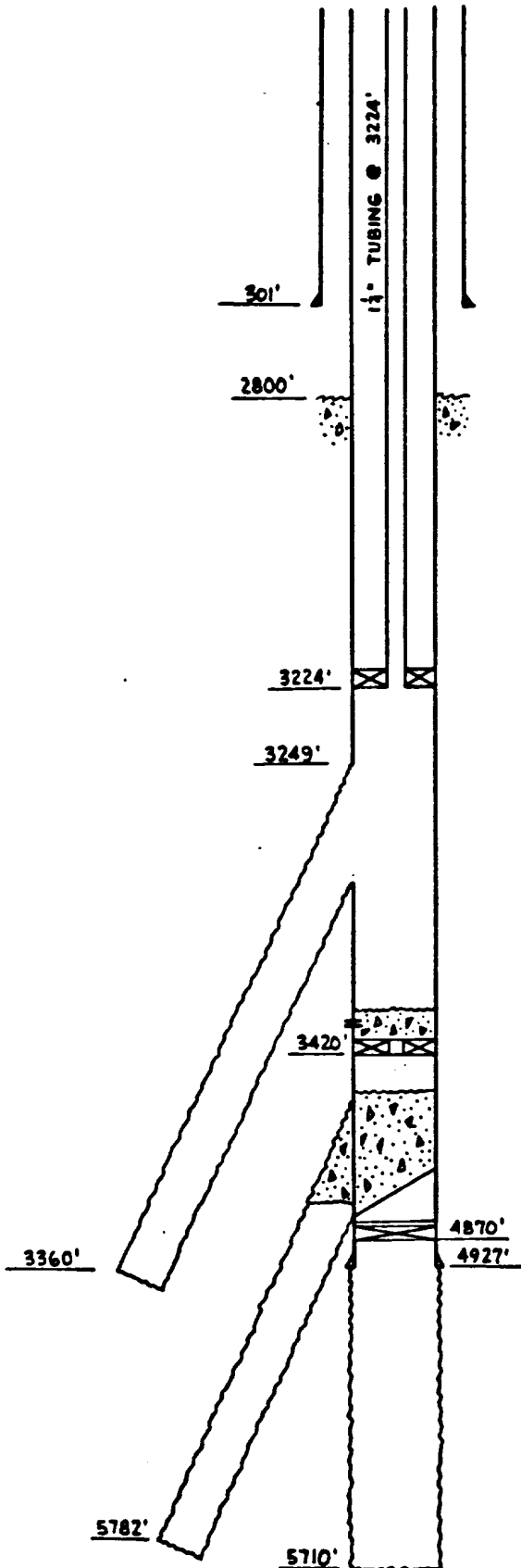
1 1/4 "OD,        LB,        GRADE,        RD,        CPLG  
LANDED @ 3224 . SN, PACKER, ETC. Cmt. rtnr  
@ 3224'  
LANDED @        . SN, PACKER, ETC.       

PUMP        RODS        ANCHOR       

DETAILED PROCEDURE:

DETAILED PROCEDURE:

1. Prepare location by blading and installing anchors if necessary. Install blowlines and blow well down.
2. MIRU workover rig. Kill well with 1% KCL water.
3. NDWH. Change out wellhead to accommodate 4-1/2" casing. NUBOP's. NU blowdown lines to casing spool.
4. Kill annulus with 1% KCL water. PT BS to 500 psi.
5. POOH and LD 1", 1.68 #/ft tubing. Visually inspect tubing on trip out. If tubing parts or if it will not come out of retainer, call Denver for further instructions.
6. PU and RIH with 2-3/8" workstring and bit. Drill up retainer with nitrogen foam and CO to PBTD with nitrogen foam. POOH.



7. RU and run 4-1/2", 10.5 #/ft. J-55 STC casing as long string as follows:
  - a) Guide shoe and insert float collar on bottom.
  - b) One centralizer with stop ring in the middle of the shoe joint and one centralizer on the joint above.
  - c) Thread lock the float shoe and the first collar above.Tag and record fill depth. CO to PBTD with foam. Blow hole clean.
8. Cement 4-1/2 csg in place per Denver's design.
9. Set slips with full casing weight. NDBOP and cut off casing. NU tubing spool. PT WH and csg to 2500 psi.
10. If 7" did not pressure test bullhead cement down 4-1/2" x 7" annulus to repair casing leak as per Denver's design. PU 1-1/4" 2.4 J-55 10 RD tubing. Clean out to FC. Reverse hole clean and displace with 1% KCL water.

COMPLETION:

11. Spot 7-1/2% D.I. HCL to cover perforated interval +200'. POOH.
12. MIRUWL. Run GR-CCL from PBTD to 2800'. Telecopy log to Denver office. Perforate the Pictured Cliffs Schlumberger's 2-1/8" Enerjet semi-expendable tubing guns loaded with 2 JSPF at 0° phasing.
13. Acidize down casing with 20 gal. per perforation of 15% weighted HCL, 600# NaCl/1000 gal and 1.5 1.1 S.G. RCN ball sealers per perforation. Displace at maximum rate with maximum surface pressure less than 2500 PSIG. Roundtrip junkbasket. TIH w/tbg. Blow hole dry with N<sub>2</sub>. POOH.
14. Fracture stimulate Pictured Cliffs with 70% quality foam and 20-40 sand as per attached schedule. Flush to 2 BBL shy of top perf. SWI for 2 hr. FTCU through 1/2" tapped bullplug.
15. TIH with 1-1/4", 2.4 #/ft, J-55, 10 rd. production string with SN 1 jt up.
16. Land tbg @ mid perf.
17. Kick well around with N<sub>2</sub> and FTCU.
18. RDMO workover rig.