

UNITED STATES
DEPARTMENT OF THE INTERIOR
BUREAU OF LAND MANAGEMENT

SUBMIT IN TRIPLICATE
(Other instructions on reverse side)

Form approved.
Budget Bureau No. 1004-0135
Expires August 31, 1985

SUNDRY NOTICES AND REPORTS ON WELLS

(Do not use this form for proposals to drill or to deepen or plug back to a different reservoir.
Use "APPLICATION FOR PERMIT—" for such proposals.)

1. OIL WELL <input type="checkbox"/> GAS WELL <input checked="" type="checkbox"/> OTHER <input type="checkbox"/>	5. LEASE DESIGNATION AND SERIAL NO. SF-078835
2. NAME OF OPERATOR Tenneco Oil Company	6. IF INDIAN, ALLOTTEE OR TRIBE NAME
3. ADDRESS OF OPERATOR P. O. Box 3249, Englewood, CO 80155	7. UNIT AGREEMENT NAME San Juan Unit 28-7 Unit
4. LOCATION OF WELL (Report location clearly and in accordance with any State requirements. See also space 17 below.) At surface 990' FSL, 990' FWL	8. FARM OR LEASE NAME
14. PERMIT NO.	9. WELL NO. 3
15. ELEVATIONS (Show whether DF, ET, GR, etc.) 6776' GI	10. FIELD AND POOL, OR WILDCAT Blanco PC
	11. SEC., T., R., M., OR BLK. AND SURVEY OR AREA Sec. 6, T27N R7W
	12. COUNTY OR PARISH Rio Arriba
	13. STATE NM

RECEIVED

DEC 16 1985

16. Check Appropriate Box To Indicate Nature of Notice, Report, or Other Data

NOTICE OF INTENTION TO:

TEST WATER SHUT-OFF

PULL OR ALTER CASING

FRACTURE TREAT

MULTIPLE COMPLETE

SHOOT OR ACIDIZE

ABANDON*

REPAIR WELL

CHANGE PLANS

(Other) case & refrac

SUBSEQUENT REPORT OF:

WATER SHUT-OFF

REPAIRING WELL

FRACTURE TREATMENT

ALTERING CASING

SHOOTING OR ACIDIZING

ABANDONMENT*

(Other)

(NOTE: Report results of multiple completion on Well Completion or Recompletion Report and Log form.)

17. DESCRIBE PROPOSED OR COMPLETED OPERATIONS (Clearly state all pertinent details, and give pertinent dates, including estimated date of starting any proposed work. If well is directionally drilled, give subsurface locations and measured and true vertical depths for all markers and zones pertinent to this work.)

Tenneco requests permission to case and refrac existing zone according to the attached detailed procedure.

RECEIVED
DEC 20 1985
OIL CON. DIV.
DIST. 3

18. I hereby certify that the foregoing is true and correct

SIGNED

TITLE Senior Regulatory Analyst

DATE 12/10/85

(This space for Federal or State office use)

APPROVED BY

TITLE

DATE

CONDITIONS OF APPROVAL, IF ANY:

DEC 14 1985
FARMINGTON RESOURCE AREA

*See Instructions on Reverse Side

NMOCC

Title 18 U.S.C. Section 1001, makes it a crime for any person knowingly and willfully to make to any department or agency of the United States any false, fictitious or fraudulent statements or representations as to any matter within its jurisdiction.

LEASE San Juan 28-7 Unit
WELL NO. 3

CASING:

9 5/8 "OD, 36.0 LB, CSG.W/ 150 SX

TOC @ surf . HOLE SIZE 12 1/4 DT: 8/6/51

REMARKS PT to 500 PSI for 30 min

6 5/8 "OD, 20.0 LB, J-55CSG.W/ 250/100 SX

TOC @ 2540 . HOLE SIZE 8 3/4 DT: 8/18/51

REMARKS 7/16/53: cut hole in csg @ 3275 &
cement w/ 100 sx

TOC @ . HOLE SIZE DATE

REMARKS

TUBING:

1 "OD, LB, GRADE, RD, CPLG

LANDED @ 3267 . SN, PACKER, ETC.

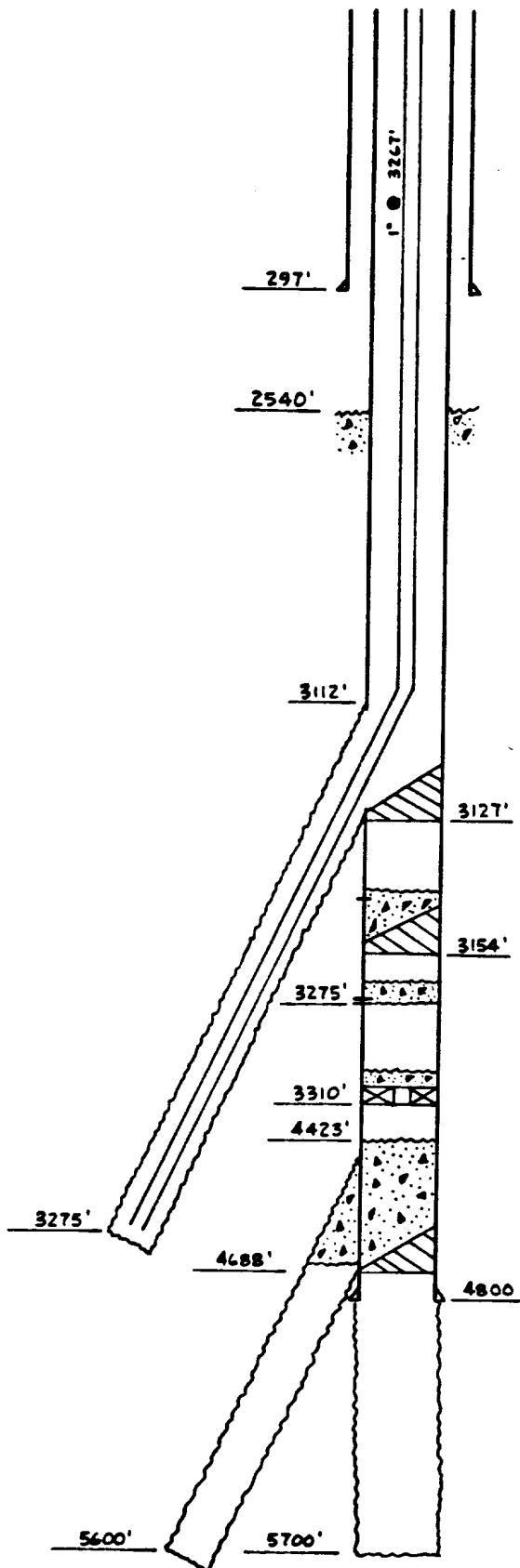
 "OD, LB, GRADE, RD, CPLG

LANDED @ . SN, PACKER, ETC.

PUMP RODS ANCHOR

DETAILED PROCEDURE:

1. Prepare location by blading and installing anchors if necessary. Install blowlines and blow well down.
2. MIRU workover rig. Kill well with 1% KCL water.
3. NDWH. Change out wellhead to accommodate 4-1/2" casing. NUBOP's. NU blowdown lines to casing spool.
4. Kill annulus with 1% KCL water.
5. POOH and LD 1", 2.68 #/ft tubing. Visually inspect tubing on trip out. If tubing will not come free or if it parts, call Denver for further instructions.



6. RU and run 4-1/2", 10.5 #/ft. J-55 STC casing as long string as follows:
 - a) Guide shoe and insert float collar on bottom.
 - b) One centralizer with stop ring in the middle of the shoe joint and one centralizer on the joint above.
 - c) Thread lock the float shoe and the first collar above.
 Tag and record fill depth. CO to PBTD with foam. Blow hole clean.
7. Cement 4-1/2 csg in place per Denver's design.
8. Set slips with full casing weight. NDBOP and cut off casing. NU tubing spool. PT WH and csg to 2500 psi.
9. PU 1-1/4" 2.4 J-55 10 RD tubing. Clean out to FC. Reverse hole clean and displace with 1% KCL water.

COMPLETION:

10. Spot 7-1/2% D.I. HCL to cover perforated interval +200'. POOH.
11. MIRUWL. Run GR-CCL from PBTD to 2800'. Telecopy log to Denver office. Perforate the Pictured Cliffs using Schlumberger's 2-1/8" Enerjet semi-expendable tubing guns loaded with 2 JSPF at 0° phasing.
12. Acidize down casing with 20 gal. per perforation of 15% weighted HCL, 600# NaCl/1000 gal and 1.5 1.1 S.G. RCN ball sealers per perforation. Displace at maximum rate with maximum surface pressure less than 2500 PSIG. Roundtrip junkbasket. TIH w/tbg. Blow hole dry with N₂. POOH.
13. Fracture stimulate Pictured Cliffs with 70% quality foam and 20-40 sand as per attached schedule. Flush to 2 BBL shy of top perf. SWI for 2 hr. FTCU through 1/2" tapped bullplug.
14. TIH with 1-1/4", 2.4 #/ft, J-55, 10 rd. production string with SN 1 jt up.
15. Land tbg @ mid perf.
16. Kick well around with N₂ and FTCU.
17. RDMO workover rig.