

UNITED STATES  
DEPARTMENT OF THE INTERIOR  
GEOLOGICAL SURVEY

## APPLICATION FOR PERMIT TO DRILL, DEEPEN, OR PLUG BACK

## 1a. TYPE OF WORK

DRILL ☒DEEPEN ☐PLUG BACK ☐

## b. TYPE OF WELL

OIL  
WELL ☐GAS  
WELL ☒OTHER ☐SINGLE  
ZONE ☒MULTIPLE  
ZONE ☐

## 2. NAME OF OPERATOR

SOUTHERN UNION PRODUCTION COMPANY

## 3. ADDRESS OF OPERATOR

P. O. BOX 808, FARMINGTON, NEW MEXICO 87401

## 4. LOCATION OF WELL (Report location clearly and in accordance with any State requirements.)\*

At surface

1485 FT. FROM NORTH LINE AND 1165 FT. FROM EAST LINE

At proposed prod. zone SAME AS ABOVE

## 14. DISTANCE IN MILES AND DIRECTION FROM NEAREST TOWN OR POST OFFICE\*

27 MILES FROM BLOOMFIELD, NEW MEXICO

## 15. DISTANCE FROM PROPOSED\*

LOCATION TO NEAREST  
PROPERTY OR LEASE LINE, FT.  
(Also to nearest drlg. unit line, if any)

1165 FT.

## 16. NO. OF ACRES IN LEASE

2480.36

17. NO. OF ACRES ASSIGNED  
TO THIS WELL

380

## 18. DISTANCE FROM PROPOSED LOCATION\*

TO NEAREST WELL, DRILLING, COMPLETED,  
OR APPLIED FOR, ON THIS LEASE, FT.

175 FT.

## 19. PROPOSED DEPTH

6750 FT.

## 20. ROTARY OR CABLE TOOLS

ROTARY TOOLS

## 21. ELEVATIONS (Show whether DF, RT, GR, etc.)

6358 FT. UNGRADED GROUND

## 22. APPROX. DATE WORK WILL START\*

NOVEMBER 14, 1966

## 23.

## PROPOSED CASING AND CEMENTING PROGRAM

SIZE OF HOLE	SIZE OF CASING	WEIGHT PER FOOT	SETTING DEPTH	QUANTITY OF CEMENT
12-1/4"	8-5/8"	24.0#	300 FT.	250 BAGS
7-7/8"	4-1/2"	10.5#	6750 FT.	2400 CU. FT.

WE PROPOSE TO DRILL A DAKOTA WELL. ANTICIPATED TOTAL DEPTH 6750 FT.

## 1. CASING PROGRAM:

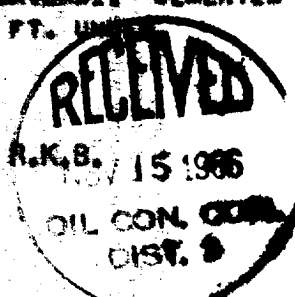
SURFACE: 8-5/8", 24.0#, J-55 SURFACE CASING SET AT 300 FT. CEMENTED W/250 BAGS.

PRODUCTION: 4-1/2", 10.50#, J-55 SET AT T.D. 6750 FT. 1ST STAGE CEMENTED W/600 CU.FT. CEMENT; STAGE COLLAR SET AT APPROX. 4550 FT. UNDER MESAVERTES. CEMENTED W/750 CU.FT. CEMENT; STAGE COLLAR SET AT APPROX. 2150 FT. UNDER PICTURED CLIFFS. CEMENTED W/1050 CU. FT. CEMENT.

## 2. ROTARY TOOLS WILL BE USED TO MUD DRILL WELL FROM SURFACE TO T.D.

## 3. WELL WILL BE SAND FRACED TO STIMULATE PRODUCTION.

## 4. 1-1/2", E.U.E., 2.90#, JCN TUBING WILL BE LAMDED AT APPROX. 6750 FT. R.K.B.



IN ABOVE SPACE DESCRIBE PROPOSED PROGRAM: If proposal is to deepen or plug back, give data on present productive zone and proposed new productive zone. If proposal is to drill or deepen directionally, give pertinent data on subsurface locations and measured and true vertical depths. \* Give blowout preventer program, if any.

## 24. ORIGINAL SIGNED BY

B. R. VANDERSLICE

AREA SUPERINTENDENT

NOVEMBER 10, 1966

SIGNED

B. R. VANDERSLICE

TITLE

DATE

(This space for Federal or State office use)

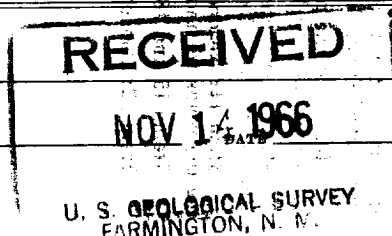
PERMIT NO.

APPROVAL DATE

APPROVED BY

TITLE

CONDITIONS OF APPROVAL, IF ANY:



## Instructions

**General:** This form is designed for submitting proposals to perform certain well operations, as indicated, on all types of lands and leases for appropriate action by either a Federal or a State agency, or both, pursuant to applicable Federal and/or State laws and regulations. Any necessary special instructions concerning the use of this form and the number of copies to be submitted, particularly with regard to local, area, or regional procedures and practices, either are shown below or will be issued by, or may be obtained from, the local Federal and/or State office.

**Item 1:** If the proposal is to redrill to the same reservoir at a different subsurface location or to a new reservoir, use this form with appropriate notations. Consult applicable State or Federal regulations concerning subsequent work proposals or reports on the well.

**Item 2:** If there are no applicable State requirements, locations on Federal or Indian land should be described in accordance with Federal requirements. Consult local State or Federal office for specific instructions.

**Item 14:** Needed only when location of well cannot readily be found by road from the land or lease description. A plat, or plats, separate or on this reverse side, showing the roads to, and the surveyed location of, the well, and any other required information, should be furnished when required by Federal or State agency offices.

**Items 15 and 18:** If well is to be, or has been directionally drilled, give distances for subsurface location of hole in any present or objective production zone.

**Item 22:** Consult applicable Federal or State regulations, or appropriate officials, concerning approval of the proposal before operations are started.

**NEW MEXICO OIL CONSERVATION COMMISSION  
WELL LOCATION AND ACERAGE DEDICATION PLAT**

All distances must be from the outer boundaries of the Section

Operator <b>SOUTHERN UNION PRODUCTION COMPANY</b>			Lease <b>NEW</b>		Well No. <b>17</b>
Unit Letter <b>H</b>	Section <b>20</b>	Township <b>26 NORTH</b>	Range <b>8 WEST</b>	County <b>SAN JUAN</b>	
Actual Footage Location of Well: <b>1485</b> feet from the <b>NORTH</b> line and <b>1165</b> feet from the <b>EAST</b> line					
Ground Level Elev <b>6358.0</b>	Producing Formation <b>SAN JUAN</b>	Pool <b>SAN JUAN</b>	Dedicated Acreage: <b>6 1/2 - 320</b> Acres		

1. Outline the acreage dedicated to the subject well by colored pencil or hachure marks on the plat below.
2. If more than one lease is dedicated to the well, outline each and identify the ownership thereof (both as to working interest and royalty),
3. If more than one lease of different ownership is dedicated to the well, have the interests of all owners been consolidated by communitization, unitization, force-pooling, etc?

( ) Yes ( ) No If answer is "yes," type of consolidation .....

If answer is "no," list the owners and tract descriptions which have actually consolidated. (Use reverse side of this form if necessary.) .....

No allowable will be assigned to the well until all interests have been consolidated (by communitization, unitization, forced-pooling, or otherwise) or until a non standard unit, eliminating such interests, has been approved by the Commission.

**CERTIFICATION**

I hereby certify that the information contained herein is true and complete to the best of my knowledge and belief.

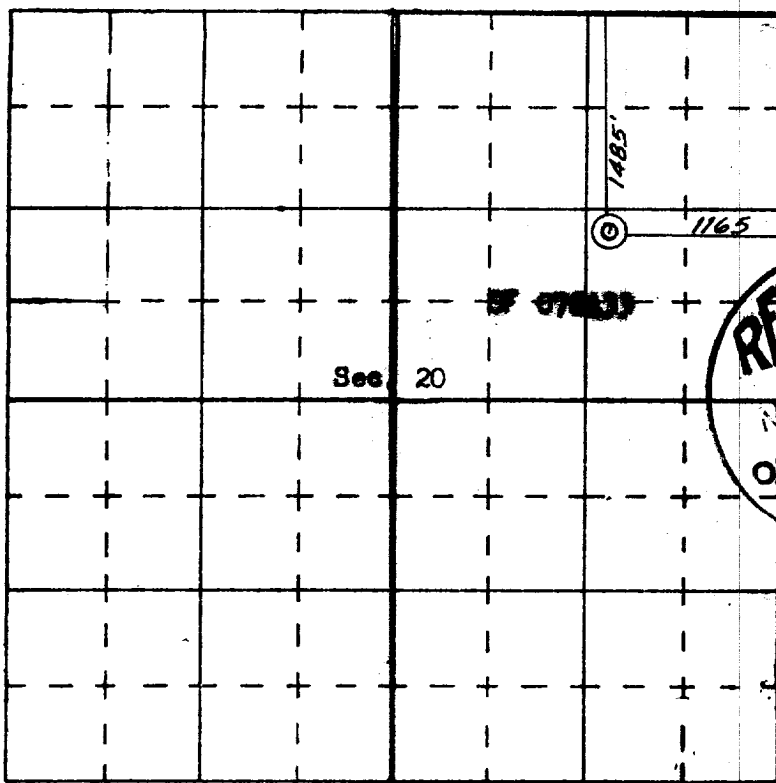
**ORIGINAL SIGNED BY**

Name **B. R. VANDERSLICE**  
**B. R. VANDERSLICE**

Position  
**AREA SUPERINTENDENT**

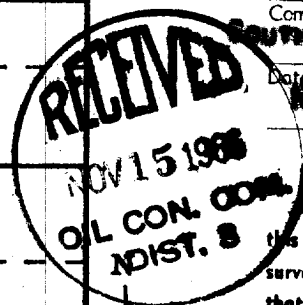
Company  
**SOUTHERN UNION PRODUCTION COMPANY**

Date  
**November 10, 1966**



SCALE—4 INCHES EQUALS 1 MILE

**SAN JUAN ENGINEERING COMPANY, FARMINGTON, N. M.**



I hereby certify that the well location shown on this plat was plotted from field notes of actual surveys made by me or under my supervision, and that the same is true and correct to the best of my knowledge and belief.

Date Surveyed  
**November 10, 1966**

Registered Professional Engineer  
and/or Land Surveyor  
**JAMES E. ROSE**

**1469**  
Certificate No.