

UNITED STATES  
DEPARTMENT OF THE INTERIOR  
GEOLOGICAL SURVEY

## APPLICATION FOR PERMIT TO DRILL, DEEPEN, OR PLUG BACK

## 1a. TYPE OF WORK

DRILL ☒DEEPEN ☐PLUG BACK ☐

## b. TYPE OF WELL

OIL  
WELL ☐GAS  
WELL ☒

OTHER

SINGLE  
ZONE ☒MULTIPLE  
ZONE ☐

## 2. NAME OF OPERATOR

Southern Union Production Company

## 3. ADDRESS OF OPERATOR

P. O. Box 806, Farmington, New Mexico 87401

## 4. LOCATION OF WELL (Report location clearly and in accordance with any State requirements.)\*

At surface

860 Ft. from the South line and 940 Ft. from the West line.

At proposed prod. zone

Same as above.

## 14. DISTANCE IN MILES AND DIRECTION FROM NEAREST TOWN OR POST OFFICE\*

30 Miles South of Bloomfield, New Mexico

## 15. DISTANCE FROM PROPOSED\*

LOCATION TO NEAREST  
PROPERTY OR LEASE LINE, FT.  
(Also to nearest drlg. unit line, if any)

1320 Ft.

## 18. DISTANCE FROM PROPOSED LOCATION\*

TO NEAREST WELL, DRILLING, COMPLETED,  
OR APPLIED FOR, ON THIS LEASE, FT.

1930 Ft.

## 16. NO. OF ACRES IN LEASE

## 19. PROPOSED DEPTH

7000 Ft.

17. NO. OF ACRES ASSIGNED  
TO THIS WELL

320

## 20. ROTARY OR CABLE TOOLS

Rotary

## 21. ELEVATIONS (Show whether DF, RT, GR, etc.)

6593 Ft. Ungraded Ground Level

## 22. APPROX. DATE WORK WILL START\*

June 1, 1967

## 23.

## PROPOSED CASING AND CEMENTING PROGRAM

SIZE OF HOLE	SIZE OF CASING	WEIGHT PER FOOT	SETTING DEPTH	QUANTITY OF CEMENT
12-1/4"	8-5/8"	24.0#	300 ft.	250 sacks
7-7/8"	6-1/2"	10.5#	7000 ft.	2450 cu. ft. (3 stage)

We Propose to drill a Dakota well; Anticipated total depth 7000 ft. R.K.B.

## 1. Casing Program:

Surface: 8-5/8", 24.0#, J-55 set at 300 ft. Cemented w/250 sacks.  
Production: 6-1/2", 10.50#, J-55 set at T.D. of 7000 ft. R.K.B. 1st stage  
cemented w/600 cu. ft. of cement; stage collar set approx. 1540 ft.  
under Mesaverde and cemented w/750 cu. ft. of cement; stage collar  
set at 2440 ft. under Pictured Cliffs and cemented w/1100 cu. ft.  
of cement.

2. Rotary tools will be used to sand drill well from surface to total depth.

3. Dakota formation will be sand fraced to stimulate production.

4. 1-1/2", E.U.E., 2.90#, JOW tubing will be landed at approx. 6000 ft. R.K.B.

4. ABOVE SPACE DESCRIBE PROPOSED PROGRAM: If proposal is to deepen or plug back, give data on present productive zone and proposed new productive zone. If proposal is to drill or deepen directionally, give pertinent data on subsurface locations and measured and true vertical depths. Give blowout preventer program, if any.

## 24.

Original signed by  
GILBERT D. NOLAND, JR.  
SIGNED Gilbert D. Noland, Jr.  
(This space for Federal or State office use)

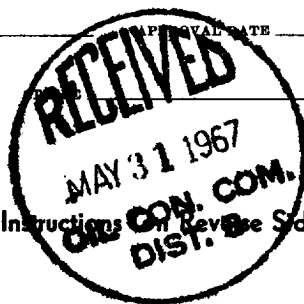
TITLE Drilling Superintendent

DATE May 26, 1967

PERMIT NO.

APPROVED BY  
CONDITIONS OF APPROVAL, IF ANY:

\*See Instructions on Reverse Side



RECEIVED

MAY 29 1967

U. S. GEOLOGICAL SURVEY  
FARMINGTON, N. M.

## Instructions

**General:** This form is designed for submitting proposals to perform certain well operations, as indicated, on all types of lands and leases for appropriate action by either a Federal or a State agency, or both, pursuant to applicable Federal and/or State laws and regulations. Any necessary special instructions concerning the use of this form and the number of copies to be submitted, particularly with regard to local, area, or regional procedures and practices, either are shown below or will be issued by, or may be obtained from, the local Federal and/or State office.

**Item 1:** If the proposal is to redrill to the same reservoir at a different subsurface location or to a new reservoir, use this form with appropriate notations. Consult applicable State or Federal regulations concerning subsequent work proposals or reports on the well.

**Item 4:** If there are no applicable State requirements, locations on Federal or Indian land should be described in accordance with Federal requirements. Consult local State or Federal office for specific instructions.

**Item 14:** Needed only when location of well cannot readily be found by road from the land or lease description. A plat, or plats, separate or on this reverse side, showing the roads to, and the surveyed location of, the well, and any other required information, should be furnished when required by Federal or State agency offices.

**Items 15 and 18:** If well is to be, or has been directionally drilled, give distances for subsurface location of hole in any present or objective production zone.

**Item 22:** Consult applicable Federal or State regulations, or appropriate officials, concerning approval of the proposal before operations are started.



**NEW MEXICO OIL CONSERVATION COMMISSION  
WELL LOCATION AND ACERAGE DEDICATION PLAT**

*All distances must be from the outer boundaries of the Section*

Operator <b>SOUTHERN UNION PRODUCTION COMPANY</b>			Lease <b>HODGES</b>		Well No. <b>11</b>
Unit Letter <b>M</b>	Section <b>27</b>	Township <b>26 NORTH</b>	Range <b>8 WEST</b>	County <b>SAN JUAN</b>	
Actual Footage Location of Well: <b>880</b> feet from the <b>SOUTH</b> line and <b>940</b> feet from the <b>WEST</b> line					
Ground Level Elev. <b>6593.0</b>	Producing Formation <b>DAKOTA</b>	Pool <b>BASIN DAKOTA</b>		Dedicated Acreage: <b>W/2 320 Acres</b>	

1. Outline the acreage dedicated to the subject well by colored pencil or hatchure marks on the plat below.
2. If more than one lease is dedicated to the well, outline each and identify the ownership thereof (both as to working interest and royalty),
3. If more than one lease of different ownership is dedicated to the well, have the interests of all owners been consolidated by communitization, unitization, force-pooling, etc?  
 ( ) Yes ( ) No If answer is "yes," type of consolidation \_\_\_\_\_

If answer is "no," list the owners and tract descriptions which have actually consolidated. (Use reverse side of this form if necessary.) \_\_\_\_\_

No allowable will be assigned to the well until all interests have been consolidated (by communitization, unitization, forced-pooling, or otherwise) or until a non standard unit, eliminating such interests, has been approved by the Commission.

**CERTIFICATION**

I hereby certify that the information contained herein is true and complete to the best of my knowledge and belief.

*Gilbert D. Noland, Jr.*  
 Name Gilbert D. Noland, Jr.  
 Position Drilling Superintendent  
 Company Southern Union Production Co.  
 Date May 26, 1967

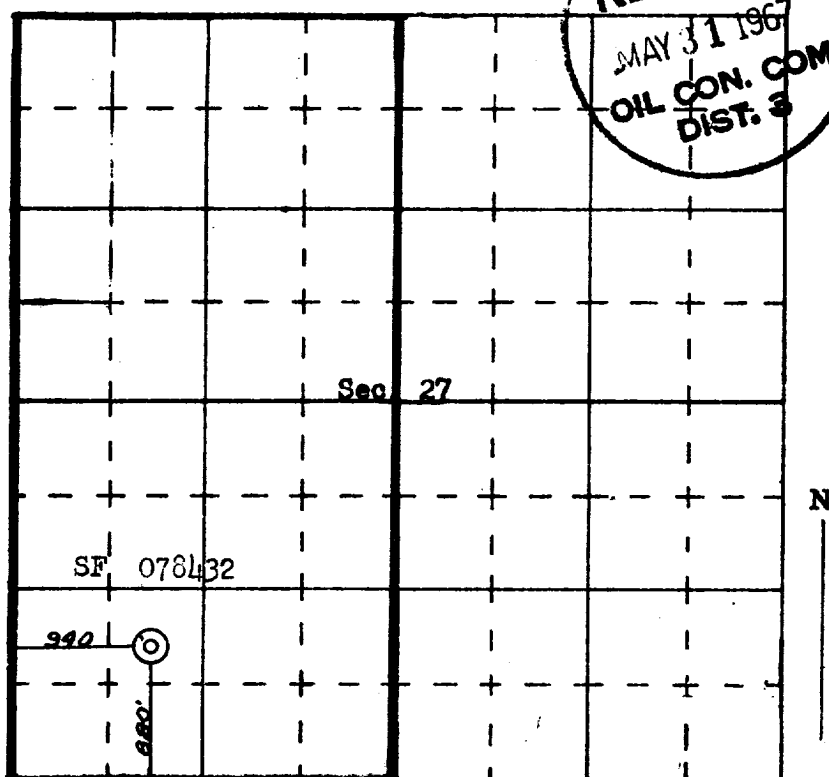
I hereby certify that the well location shown on this plat was plotted from field notes of actual surveys made by me or under my supervision, and that the same is true and correct to the best of my knowledge and belief.

May 23, 1967

Date Surveyed \_\_\_\_\_

*James P. Leek*  
 Registered Professional Engineer  
 and/or Land Surveyor  
**JAMES P. LEAK**

1463  
 Certificate No.



SCALE—4 INCHES EQUALS 1 MILE

**SAN JUAN ENGINEERING COMPANY, FARMINGTON, N. M.**