

UNITED STATES
DEPARTMENT OF THE INTERIOR
GEOLOGICAL SURVEY

SUBMIT IN TRIPLICATE*
(Other instructions on reverse side)

Form approved.
Budget Bureau No. 42-R1425.

645
30-647-20115

JUL 26 1967

OIL CON. COM.
PLUG BACK

APPLICATION FOR PERMIT TO DRILL, DEEPEN, OR PLUG BACK

1a. TYPE OF WORK

DRILL ☒

DEEPEN ☐

PLUG BACK ☐

b. TYPE OF WELL

OIL WELL ☐

GAS WELL ☒

OTHER

SINGLE ZONE ☒

MULTIPLE ZONE ☐

2. NAME OF OPERATOR

SOUTHERN UNION PRODUCTION COMPANY

3. ADDRESS OF OPERATOR

P. O. Box 808, Farmington, New Mexico 87401

4. LOCATION OF WELL (Report location clearly and in accordance with any State requirements.)*

At surface 1565 FT. FROM SOUTH LINE AND 1140 FT. FROM WEST LINE

At proposed prod. zone SAME AS ABOVE

14. DISTANCE IN MILES AND DIRECTION FROM NEAREST TOWN OR POST OFFICE*

26 MILES SOUTHEAST OF BLOOMFIELD, NEW MEXICO

15. DISTANCE FROM PROPOSED*

LOCATION TO NEAREST PROPERTY OR LEASE LINE, FT. (Also to nearest drlg. unit line, if any)

1915 FT.

18. DISTANCE FROM PROPOSED LOCATION* TO NEAREST WELL, DRILLING, COMPLETED, OR APPLIED FOR, ON THIS LEASE, FT.

2840 FT.

16. NO. OF ACRES IN LEASE

19. PROPOSED DEPTH

7400 FT.

17. NO. OF ACRES ASSIGNED TO THIS WELL

320 ACRES

20. ROTARY OR CABLE TOOLS

ROTARY

21. ELEVATIONS (Show whether DF, RT, GR, etc.)

6922 FT. UNGRADED GROUND LEVEL

22. APPROX. DATE WORK WILL START*

August, 1, 1967

23. PROPOSED CASING AND CEMENTING PROGRAM

SIZE OF HOLE	SIZE OF CASING	WEIGHT PER FOOT	SETTING DEPTH	QUANTITY OF CEMENT
12-1/4"	8-5/8"	24.0#	300 FT.	250 BAGS
7-7/8"	4-1/2"	10.5#	7400 FT.	2600 CU. FT. (3 STAGE)

WE PROPOSE TO DRILL A DAKOTA WELL; ANTICIPATED TOTAL DEPTH 7400 FT. R.K.B.

1. CASING PROGRAM:

SURFACE: 8-5/8", 24.0#, J-55 SET @300 FT. CEMENTED W/250 BAGS.
PRODUCTION: 4-1/2", 10.50#, J-55 SET AT T.D. OF 7400 FT. R.K.B. 1ST STAGE CEMENTED W/650 CU. FT. CEMENT, STAGE COLLAR SET UNDER MESAVERT AT APPROX. 5210 FT. R.K.B. CEMENTED W/750 CU. FT. CEMENT, STAGE COLLAR SET UNDER PICTURED CLIFFS AT APPROX. 2910 FT. R.K.B. CEMENTED W/1200 CU. FT. CEMENT.

2. ROTARY TOOLS WILL BE USED TO MUD DRILL WELL FROM SURFACE TO TOTAL DEPTH.

3. WELL WILL BE PERFORATED AND SAND FRACED TO STIMULATE PRODUCTION.

4. 1-1/2" E.U.E., 2.90#, JCH TSG. WILL BE LANDED AT APPROX. 7250 FT. R.K.B.

IN ABOVE SPACE DESCRIBE PROPOSED PROGRAM: If proposal is to deepen or plug back, give data on present productive zone and proposed new productive zone. If proposal is to drill or deepen directionally, give pertinent data on subsurface locations and measured and true vertical depths. Give blowout preventer program, if any.

24. Original signed by

GILBERT D. NOLAND, JR.

SIGNED GILBERT D. NOLAND, JR.

TITLE MILLING SUPERINTENDENT

DATE August 1, 1967

(This space for Federal or State office use)

PERMIT NO.

APPROVAL DATE

APPROVED BY

TITLE

CONDITIONS OF APPROVAL, IF ANY:

RECEIVED

JUL 23 1967

U. S. GEOLOGICAL SURVEY
FARMINGTON, N. M.

*See Instructions On Reverse Side

Instructions

General: This form is designed for submitting proposals to perform certain well operations, as indicated, on all types of lands and leases for appropriate action by either a Federal or a State agency, or both, pursuant to applicable Federal and/or State laws and regulations. Any necessary special instructions concerning the use of this form and the number of copies to be submitted, particularly with regard to local, area, or regional procedures and practices, either are shown below or will be issued by, or may be obtained from, the local Federal and/or State office.

Item 1: If the proposal is to redrill to the same reservoir at a different subsurface location or to a new reservoir, use this form with appropriate notations. Consult applicable State or Federal regulations concerning subsequent work proposals or reports on the well.

Item 4: If there are no applicable State requirements, locations on Federal or Indian land should be described in accordance with Federal requirements. Consult local State or Federal office for specific instructions.

Item 14: Needed only when location of well cannot readily be found by road from the land or lease description. A plat, or plats, separate or on this reverse side, showing the roads to, and the surveyed location of, the well, and any other required information, should be furnished when required by Federal or State agency offices.

Items 15 and 18: If well is to be, or has been directionally drilled, give distances for subsurface location of hole in any present or objective production zone.

Item 22: Consult applicable Federal or State regulations, or appropriate officials, concerning approval of the proposal before operations are started.

All distances must be from the outer boundaries of the Section

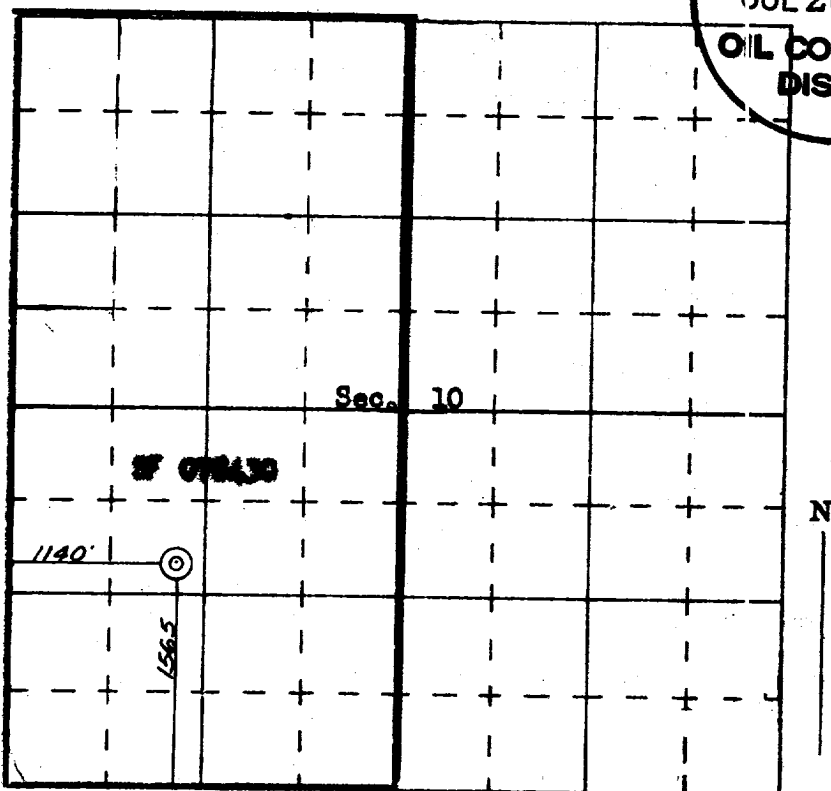
All distances must be from the outer boundaries of the Section

1. Outline the acreage dedicated to the **subject well** by colored pencil or hatchure marks on the plat below.
2. If more than one lease is dedicated to the well, outline each and identify the ownership thereof (both as to working interest and royalty),
3. If more than one lease of different ownership is dedicated to the well, have the interests of all owners been consolidated by communitization, unitization, force-pooling, etc?

() Yes () No If answer is "yes," type of consolidation

If answer is "no," list the owners and tract descriptions which have actually consolidated. (Use reverse side of this form if necessary.)

No allowable will be assigned to the well until all interests have been consolidated (by communitization, unitization, forced-pooling, or otherwise) or until a non standard unit, eliminating such interests, has been approved by the Commission.



SCALE—4 INCHES EQUALS 1 MILE

SAN JUAN ENGINEERING COMPANY, FARMINGTON, N. M.

RECEIVED

JUL 26 1967

OIL CON. COM.
DIST. 3

CERTIFICATION

I hereby certify that the information contained herein is true and complete to the best of my knowledge and belief.

Original signed by
GILBERT D. NOLAND, JR.

Name **GILBERT D. HOLAND, JR.**

Position **Drilling Superintendent**

Company Southern Union Protection Company

Date August 1, 1961

I hereby certify that the well location shown on this plat was plotted from field notes of actual surveys made by me or under my supervision, and that the same is true and correct to the best of my knowledge and belief.

December 1961
Date Supplied

Registered Professional Engineer

James

Certificate No