

UNITED STATES
DEPARTMENT OF THE INTERIOR
GEOLOGICAL SURVEY

APPLICATION FOR PERMIT TO DRILL, DEEPEN, OR PLUG BACK

1a. TYPE OF WORK

DRILL ☒DEEPEN ☐PLUG BACK ☐

b. TYPE OF WELL

OIL
WELL ☐GAS
WELL ☒

OTHER

SINGLE
ZONE ☒MULTIPLE
ZONE ☐

2. NAME OF OPERATOR

SOUTHERN UNION PRODUCTION COMPANY

3. ADDRESS OF OPERATOR

P. O. Box 808, FARMINGTON, NEW MEXICO 87401
4. LOCATION OF WELL (Report location clearly and in accordance with any State requirements.)*
At surface

790 FT. FROM SOUTH LINE & 915 FT. FROM WEST LINE

At proposed prod. zone

SAME AS ABOVE

14. DISTANCE IN MILES AND DIRECTION FROM NEAREST TOWN OR POST OFFICE*

27 MILES SOUTHEAST OF BLOOMFIELD, NEW MEXICO

15. DISTANCE FROM PROPOSED*

LOCATION TO NEAREST
PROPERTY OR LEASE LINE, FT.
(Also to nearest drlg. unit line, if any)

915 FT

18. DISTANCE FROM PROPOSED LOCATION*
TO NEAREST WELL, DRILLING, COMPLETED,
OR APPLIED FOR, ON THIS LEASE, FT.

2470

16. NO. OF ACRES IN LEASE

19. PROPOSED DEPTH

7400

17. NO. OF ACRES ASSIGNED
TO THIS WELL

320

20. ROTARY OR CABLE TOOLS

ROTARY

21. ELEVATIONS (Show whether DF, RT, GR, etc.)

6938 FT. UNGRADED GROUND LEVEL

22. APPROX. DATE WORK WILL START*

OCTOBER 11, 1967

23. PROPOSED CASING AND CEMENTING PROGRAM

SIZE OF HOLE	SIZE OF CASING	WEIGHT PER FOOT	SETTING DEPTH	QUANTITY OF CEMENT
12-1/4"	8-5/8"	24.0	300 FT.	250 BAGS
7-7/8"	4-1/2"	10.5	7400 FT.	2800 CU. FT. (3 STAGE)

WE PROPOSE TO DRILL A DAKOTA WELL. ANTICIPATED TOTAL DEPTH 7400 FT.

1. CASING PROGRAM:

SURFACE: 8-5/8", 24.0#, J-55 SET AT 300 FT. CEMENTED TO SURFACE W/250 BAGS.

PRODUCTION: 4-1/2", 10.50#, J-55 SET AT TOTAL DEPTH OF 7400 FT. R.K.B.

1ST STAGE CEMENTED W/700 CU. FT. OF CEMENT; STAGE COLLAR SET AT
APPROXIMATELY 5500 FT. R.K.B. UNDER MESAVERDE AND CEMENTED W/
900 CU. FT. CMT.STAGE COLLAR SET AT APPROXIMATELY 2950 FT. R.K.B. CEMENTED
W/ 1200 CU. FT. CEMENT.

2. ROTARY TOOLS WILL BE USED TO MUD DRILL WELL FROM SURFACE TO TOTAL DEPTH.

3. WELL WILL BE SAND FRACED TO STIMULATE PRODUCTION.

4. 1-1/2", 2.90#, E.U.E. TUBING WILL BE SET AT APPROXIMATELY 7250 FT. R.K.B.

IN ABOVE SPACE DESCRIBE PROPOSED PROGRAM: If proposal is to deepen or plug back, give data on present productive zone and proposed new productive zone. If proposal is to drill or deepen directionally, give pertinent data on subsurface locations and measured and true vertical depths. Give blowout preventer program, if any.

24.

Original signed by

GILBERT D. NOLAND, JR.

SIGNED

GILBERT D. NOLAND, JR.

(This space for Federal or State office use)

TITLE DRILLING SUPERINTENDENT

DATE OCTOBER 5, 1967

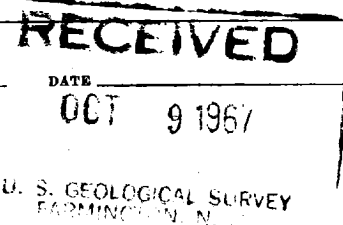
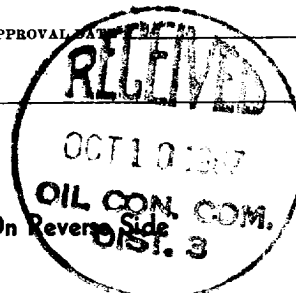
PERMIT NO.

APPROVAL

APPROVED BY

TITLE

CONDITIONS OF APPROVAL, IF ANY:

Alf

*See Instructions On Reverse Side

Instructions

General: This form is designed for submitting proposals to perform certain well operations, as indicated, on all types of lands and leases for appropriate action by either a Federal or a State agency, or both, pursuant to applicable Federal and/or State laws and regulations. Any necessary special instructions concerning the use of this form and the number of copies to be submitted, particularly with regard to local, area, or regional procedures and practices, either are shown below or will be issued by, or may be obtained from, the local Federal and/or State office.

Item 1: If the proposal is to redrill to the same reservoir at a different subsurface location or to a new reservoir, use this form with appropriate notations. Consult applicable State or Federal regulations concerning subsequent work proposals or reports on the well.

Item 4: If there are no applicable State requirements, locations on Federal or Indian land should be described in accordance with Federal requirements. Consult local State or Federal office for specific instructions.

Item 14: Needed only when location of well cannot readily be found by road from the land or lease description. A plat, or plats, separate or on this reverse side, showing the roads to, and the surveyed location of, the well, and any other required information, should be furnished when required by Federal or State agency offices.

Items 15 and 18: If well is to be, or has been directionally drilled, give distances for subsurface location of hole in any present or objective production zone.

Item 22: Consult applicable Federal or State regulations, or appropriate officials, concerning approval of the proposal before operations are started.

**NEW MEXICO OIL CONSERVATION COMMISSION
WELL LOCATION AND ACERAGE DEDICATION PLAT**

All distances must be from the outer boundaries of the Section

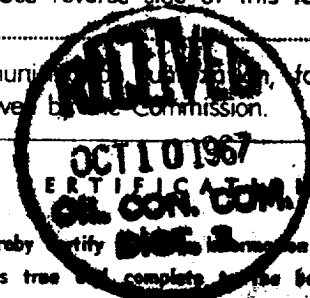
Operator SOUTHERN UNION PRODUCTION COMPANY			Lease NICKSON		Well No. 13
Unit Letter M	Section 26	Township 26 NORTH	Range 8 WEST	County SAN JUAN	
Actual Footage Location of Well: 790 feet from the SOUTH line and 915 feet from the WEST line					
Ground Level Elev. 6938.0	Producing Formation DAKOTA	Pool BARIN DAKOTA		Dedicated Acreage: 1/2 320	Acres

1. Outline the acreage dedicated to the subject well by colored pencil or hachure marks on the plat below.
2. If more than one lease is dedicated to the well, outline each and identify the ownership thereof (both as to working interest and royalty).
3. If more than one lease of different ownership is dedicated to the well, have the interests of all owners been consolidated by communitization, unitization, force-pooling, etc?

() Yes () No If answer is "yes," type of consolidation

If answer is "no," list the owners and tract descriptions which have actually consolidated. (Use reverse side of this form if necessary.)

No allowable will be assigned to the well until all interests have been consolidated (by communitization, unitization, force-pooling, or otherwise) or until a non standard unit, eliminating such interests, has been approved by the Commission.



I hereby certify the information contained herein is true and complete to the best of my knowledge and belief.

Original signed by

Name **GILBERT D. NOLAND, JR.**

GILBERT D. NOLAND, JR.
Position

Drilling Superintendent
Company

SOUTHERN UNION PRODUCTION COMPANY
Date

OCTOBER 5, 1967

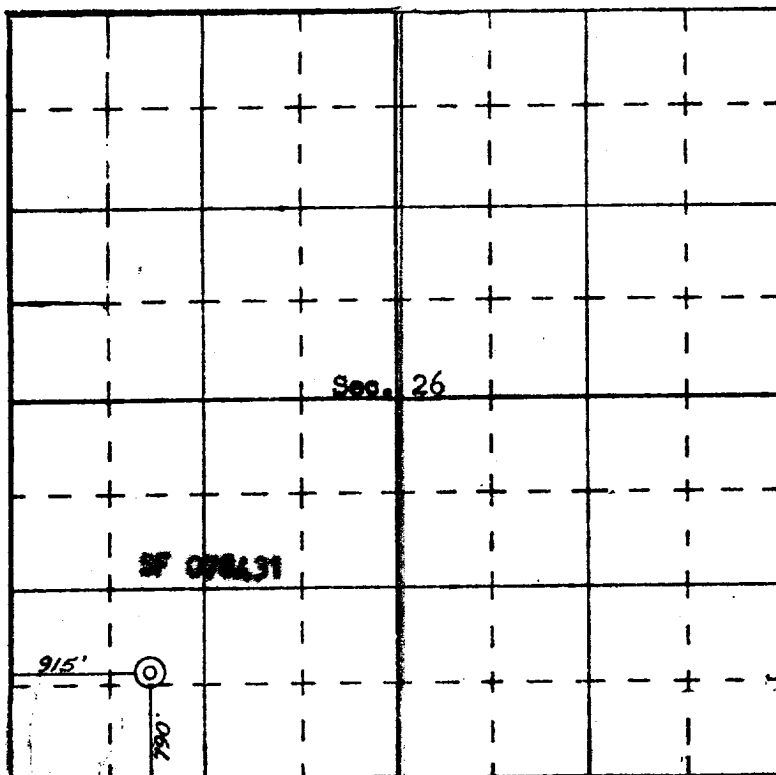
I hereby certify that the well location shown on this plat was plotted from field notes of actual surveys made by me or under my supervision, and that the same is true and correct to the best of my knowledge and belief.

Date Surveyed

Registered Professional Engineer
and/or Land Surveyor

JAMES P. [Signature]

Certificate No. **1163**



SCALE—4 INCHES EQUALS 1 MILE

SAN JUAN ENGINEERING COMPANY, FARMINGTON, N. M.