

UNITED STATES  
DEPARTMENT OF THE INTERIOR  
GEOLOGICAL SURVEY

## APPLICATION FOR PERMIT TO DRILL, DEEPEN, OR PLUG BACK

## 1a. TYPE OF WORK

DRILL ☒DEEPEN ☐PLUG BACK ☐

## b. TYPE OF WELL

OIL  
WELL ☐GAS  
WELL ☒

OTHER

SINGLE  
ZONE ☒MULTIPLE  
ZONE ☐

## 2. NAME OF OPERATOR

El Paso Natural Gas Company

## 3. ADDRESS OF OPERATOR

Box 990, Farmington, New Mexico - 87401

## 4. LOCATION OF WELL (Report location clearly and in accordance with any State requirements.\*)

At surface

1850'N, 1650'E

At proposed prod. zone

## 14. DISTANCE IN MILES AND DIRECTION FROM NEAREST TOWN OR POST OFFICE\*

## 15. DISTANCE FROM PROPOSED\*

LOCATION TO NEAREST  
PROPERTY OR LEASE LINE, FT.  
(Also to nearest drlg. unit line, if any)

## 18. DISTANCE FROM PROPOSED LOCATION\*

TO NEAREST WELL, DRILLING, COMPLETED,  
OR APPLIED FOR, ON THIS LEASE, FT.

## 16. NO. OF ACRES IN LEASE

## 19. PROPOSED DEPTH

6820'

17. NO. OF ACRES ASSIGNED  
TO THIS WELL

## 20. ROTARY OR CABLE TOOLS

Rotary

## 21. ELEVATIONS (Show whether DF, RT, GR, etc.)

6038' GL

## 22. APPROX. DATE WORK WILL START\*

## 23.

## PROPOSED CASING AND CEMENTING PROGRAM

SIZE OF HOLE	SIZE OF CASING	WEIGHT PER FOOT	SETTING DEPTH	QUANTITY OF CEMENT
12 1/4"	8 5/8"	24#	200'	170 Sks. to circulate
7 7/8"	4 1/2"	10.5 & 11.6#	6820'	597 Sks. - 3 Stages

## Production Casing Cementing:

First Stage w/252 sacks to fill from total depth to the top of the Gallup formation.

Second stage w/170 sacks to cover the Mesa Verde formation.

Third Stage w/175 sacks to cover the Pictured Cliffs formation.

Selectively perforate and sand water fracture the Dakota formation.

The E/2 of Section 5 is dedicated to this well.

IN ABOVE SPACE DESCRIBE PROPOSED PROGRAM: If proposal is to deepen or plug back, give data on present productive zone and proposed new productive zone. If proposal is to drill or deepen directionally, give pertinent data on subsurface locations and measured and true vertical depths. Give blowout preventer program, if any.

24.

SIGNED

Signed by  
L. E. Matthews

TITLE

Petroleum Engineer

DATE

10-11-68

(This space for Federal or State office use)

PERMIT NO.

APPROVAL DATE

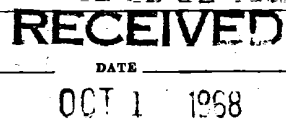
APPROVED BY

TITLE

DATE

CONDITIONS OF APPROVAL, IF ANY:

\*See Instructions On Reverse Side

U. S. GEOLOGICAL SURVEY  
FARMINGTON, N. M.

MEXICO OIL CONSERVATION COMMISS  
WELL LOCATION AND ACREAGE DEDICATION PLAT

Form O-102  
Supersedes O-128  
Effective 1-1-65

All distances must be from the outer boundaries of the Section

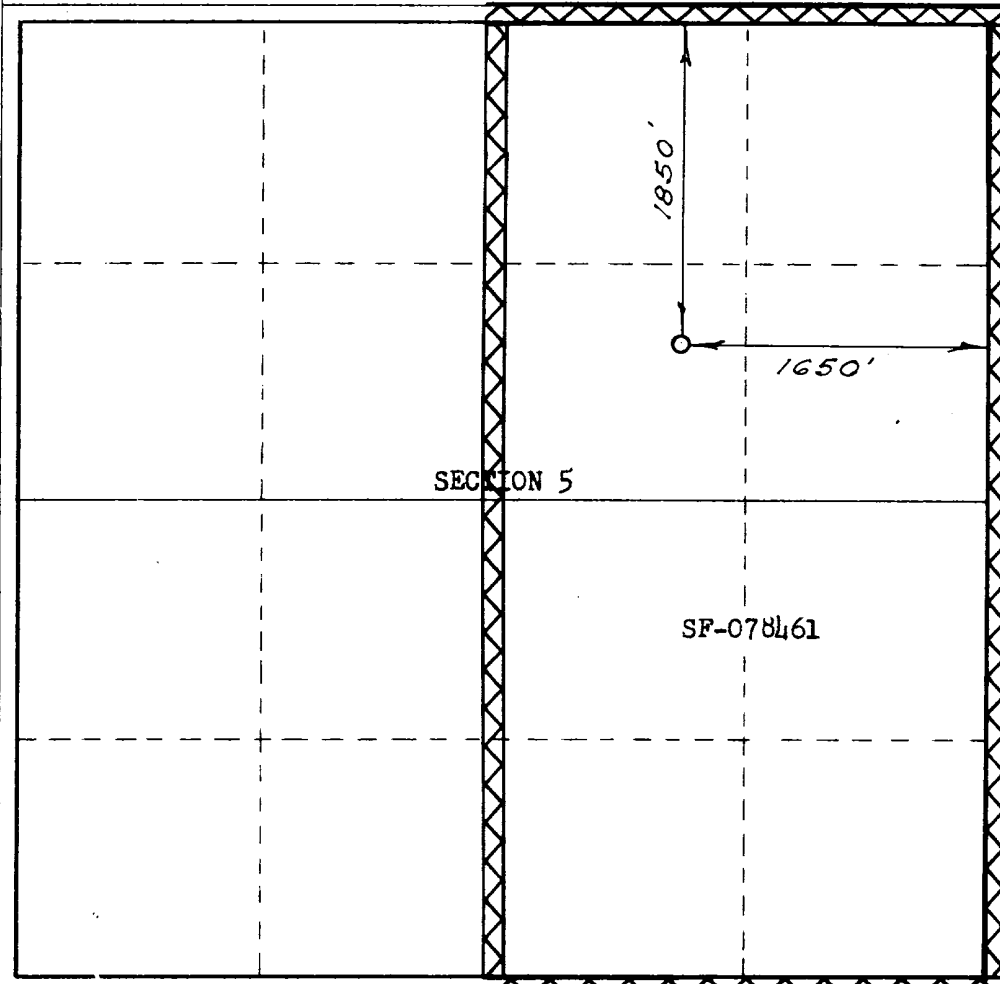
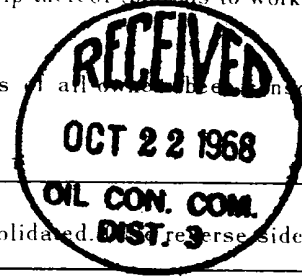
EL PASO NATURAL GAS COMPANY			Lease <b>FILAN</b>		(SF-078461)	Well No. <b>6</b>
First Letter <b>G</b>	Section <b>5</b>	Township <b>27-N</b>	Range <b>8-W</b>	County <b>SAN JUAN</b>		
Actual Well Location of Well: <b>1850</b> feet from the <b>NORTH</b> line and <b>1650</b> feet from the <b>EAST</b> line						
Ground Level Elev. <b>6038</b>	Producing Formation <b>DAKOTA</b>		Pool <b>BASIN DAKOTA</b>		Dedicated Acreage <input checked="" type="checkbox"/> <b>321.48</b> Acres	

1. Outline the acreage dedicated to the subject well by colored pencil or hatchure marks on the plat below.
2. If more than one lease is dedicated to the well, outline each and identify the ownership thereof (both as to working interest and royalty).
3. If more than one lease of different ownership is dedicated to the well, have the interests of all owners been consolidated by communitization, unitization, force-pooling, etc?

☐ Yes ☐ No If answer is "yes," type of consolidation \_\_\_\_\_

If answer is "no," list the owners and tract descriptions which have actually been consolidated (reverse side of this form if necessary.) \_\_\_\_\_

No allowable will be assigned to the well until all interests have been consolidated (by communitization, unitization, forced-pooling, or otherwise) or until a non-standard unit, eliminating such interests, has been approved by the Commission. **NOTE: THIS PLAT REISSUED TO SHOW CORRECTED ACREAGE DEDICATION 10-15-68**



<b>CERTIFICATION</b>	
I hereby certify that the information contained herein is true and complete to the best of my knowledge and belief.	
Original signed by <b>Carl E. Matthews</b>	
Name	<b>Petroleum Engineer</b>
Position	<b>El Paso Natural Gas Co.</b>
Company	<b>October 15, 1968</b>
Date	
I hereby certify that the well location shown on this plat was plotted from field notes of actual surveys made by me or under my supervision, and that the same is true and correct to the best of my knowledge and belief.	
Date Surveyed	<b>AUGUST 22, 1968</b>
Registered Professional Engineer and/or Land Surveyor <i>Paul Chiles</i>	
Certificate No.	<b>1760</b>

