

File

NEW MEXICO CONSERVATION COMMISSION
WELL LOCATION AND ACREAGE DELINEATION PLAT

EL PASO NATURAL GAS COMPANY

HUERFANO UNIT

(NM-02874-A)

151-Y

0

35

20-40

10-40

SAN JUAN

1540

NORTH

1500

W-17

2700

GALLUP

UNDESIGNATED GALLUP

40

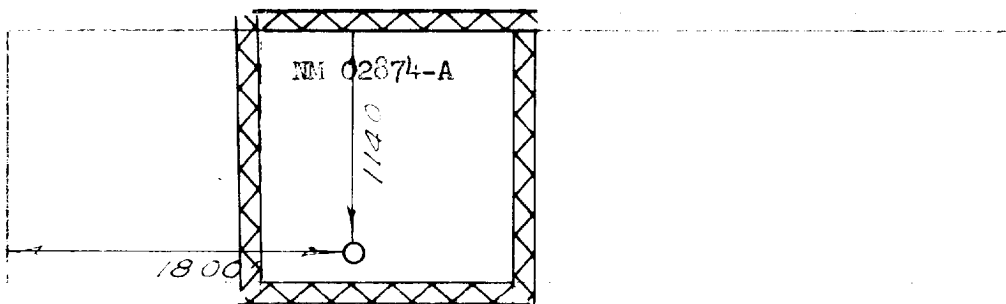
1. The well shown on this plat is located within the boundaries of the Huerfano Unit, San Juan County, New Mexico.

2. The well shown on this plat is located within the boundaries of the Huerfano Unit, San Juan County, New Mexico.

3. The well shown on this plat is located within the boundaries of the Huerfano Unit, San Juan County, New Mexico.

4. The well shown on this plat is located within the boundaries of the Huerfano Unit, San Juan County, New Mexico.

5. The well shown on this plat is located within the boundaries of the Huerfano Unit, San Juan County, New Mexico.



SECTION 35



By *John E. Wood* F. H. WOOD

Petroleum Engineer

El Paso Natural Gas Company

November 18, 1970

NOV 18 1968

John E. Wood
1760