

Submit 3 Copies To Appropriate District
Office
District I
1625 N. French Dr., Hobbs, NM 87240
District II
811 South First, Artesia, NM 87210
District III
1000 Rio Brazos Rd., Aztec, NM 87410
District IV
2040 South Pacheco, Santa Fe, NM 87505

State of New Mexico
Energy, Minerals and Natural Resources

Form C-103
Revised March 25, 1999

OIL CONSERVATION DIVISION
2040 South Pacheco
Santa Fe, NM 87505

WELL API NO. 30-045-20945
5. Indicate Type of Lease STATE <input checked="" type="checkbox"/> FEE <input type="checkbox"/>
6. State Oil & Gas Lease No. E-3148-7
7. Lease Name or Unit Agreement Name: Burroughs State
8. Well No. 1
9. Pool name or Wildcat Basin Dakota

SUNDRY NOTICES AND REPORTS ON WELLS
(DO NOT USE THIS FORM FOR PROPOSALS TO DRILL OR TO DEEPEN OR PLUG BACK TO A DIFFERENT RESERVOIR. USE "APPLICATION FOR PERMIT" (FORM C-10) FOR SUCH PROPOSALS.)

1. Type of Well:
Oil Well ☐ Gas Well ☒ Other

2. Name of Operator
ENERGEN RESOURCES CORPORATION

3. Address of Operator
2198 Bloomfield Highway; Farmington, NM 87401

4. Well Location
Unit Letter C : 840 feet from the North line and 1500 feet from the West line
Section 36 Township 26N Range 11W NMPM County San Juan

10. Elevation (Show whether DR, RKB, RT, GR, etc.)
6399' GR

11. Check Appropriate Box to Indicate Nature of Notice, Report, or Other Data

NOTICE OF INTENTION TO:

PERFORM REMEDIAL WORK ☐ PLUG AND ABANDON ☒
TEMPORARILY ABANDON ☐ CHANGE PLANS ☐
PULL OR ALTER CASING ☐ MULTIPLE COMPLETION ☐
OTHER: ☐

SUBSEQUENT REPORT OF:

REMEDIAL WORK ☐ ALTERING CASING ☐
COMMENCE DRILLING OPNS. ☐ PLUG AND ABANDONMENT ☐
CASING TEST AND CEMENT JOB ☐
OTHER: ☐

12. Describe Proposed or Completed Operations (Clearly state all pertinent details, and give pertinent dates, including estimated date of starting any proposed work). SEE RULE 1103. For Multiple Completions: Attach wellbore diagram of proposed completion or recompletion.

It is intended to plug and abandon this well as per the attached plugging procedure.

I hereby certify that the information above is true and complete to the best of my knowledge and belief.

SIGNATURE Don Graham TITLE Production Superintendent DATE 4/12/02

Type or print name Don Graham

Telephone No. 505-325-6800

(This space for State use)

APPROVED BY ORIGINAL SIGNED BY CHARLIE T. PERRY

TITLE DEPUTY OIL & GAS INSPECTOR, DIST. 8 DATE APR 16 2002

Conditions of approval, if any:

PLUG AND ABANDONMENT PROCEDURE

4/10/02

Burroughs State #1

Basin Dakota

840' FNL and 1500' FWL, Section 36, T26N, R11W
San Juan County, New Mexico

Note: All cement volumes use 100% excess outside pipe and 50' excess inside. The stabilizing wellbore fluid will be 8.3 ppg, sufficient to balance all exposed formation pressures. All cement will be ASTM Type II, mixed at 15.6 ppg with a 1.18 cf/sx yield.

1. Install and test rig anchors. Prepare blow pit. Comply with all NMOCD, BLM and Energen safety rules and regulations. Conduct safety meeting for all personnel on location. MO and RU daylight pulling unit. NU relief line and blow well down; kill with water as necessary. ND wellhead and NU BOP and stripping head; test BOP.
2. PU on tubing and rotate to release Loc-set packer at 6132'. TOH and tally 191 joints 2-3/8" tubing, total 6132'; LD packer. If necessary use a tubing workstring. Rabbit tubing while TIH, had several tight spots and wireline tools left inside. Round-trip 4-1/2" gauge ring or casing scraper to 6118'.
4. **Plug #1 (Dakota perforations and top, 6118' – 6018')**: TIH and set a 4-1/2" CR at 6118'. Pressure test tubing to 1000#. Load casing with water and circulate well clean. Pressure test casing to 800#. If casing does not test, spot or tag subsequent plug as appropriate. Mix 12 sxs cement and spot a balance plug above the CR to isolate then Dakota. PUH to 5198'.
5. **Plug #2 (Gallup top, 5198' – 5098')**: Mix 12 sxs cement and spot a balanced plug inside the casing to cover Gallup top. PUH to 3380'.
6. **Plug #3 (Cliffhouse top, 3380' – 3280')**: Mix 12 sxs cement and spot balanced plug inside casing to cover the Cliffhouse top. TOH with tubing.
7. **Plug #4 (Mesaverde top, 2472' - 2372')**: Perforate 3 HSC squeeze holes at 2472'. Establish rate into squeeze holes if casing tested. Set a 4-1/2" CR at 2422'. Mix and pump 51 sxs cement, squeeze 39 sxs outside 4-1/2" casing and leave 12 sxs inside casing to cover Mesaverde top. PUH to 1740'.
8. **Plug #5 (Pictured Cliffs and Fruitland tops, 1740' - 1345')**: Mix 34 sxs cement and spot balanced plug inside casing to cover the PC and Fruitland tops. TOH with tubing.
9. **Plug #6 (Kirtland and Ojo Alamo tops, 765' – 570')**: Perforate 3 HSC squeeze holes at 765'. Establish rate into squeeze holes if the casing pressure tested. Set a 4-1/2" CR at 715'. Mix and pump 94 sxs cement, squeeze 75 sxs outside 4-1/2" casing and leave 19 sxs inside casing to cover through the Ojo Alamo top. TOH and LD tubing.
10. **Plug #7 (8-5/8" casing shoe, 295' - Surface)**: Perforate 3 HSC squeeze holes at 295'. Establish circulation down 4-1/2" casing and out the bradenhead valve. Mix and pump 115 sxs cement down 4-1/2" casing to circulate good cement out bradenhead valve. SI well and WOC.
11. ND BOP and cut off wellhead below surface casing flange. Install P&A marker with cement to comply with regulations. RD, MOL and cut off anchors. Restore location per BLM stipulations.

Burroughs State #1

Current

Basin Dakota

NW, (C) Section 36, T-26-N, R-11-W, San Juan County, NM

Today's Date: 4/10/02

Spud: 11/4/72

Completed: 11/27/71

Elevation: 6399' GL
6410' KB

Ojo Alamo @ 620'

Kirtland @ 715'

TOC @ 1035' (T.S.)

Fruitland @ 1395'

Pictured Cliffs @ 1690'

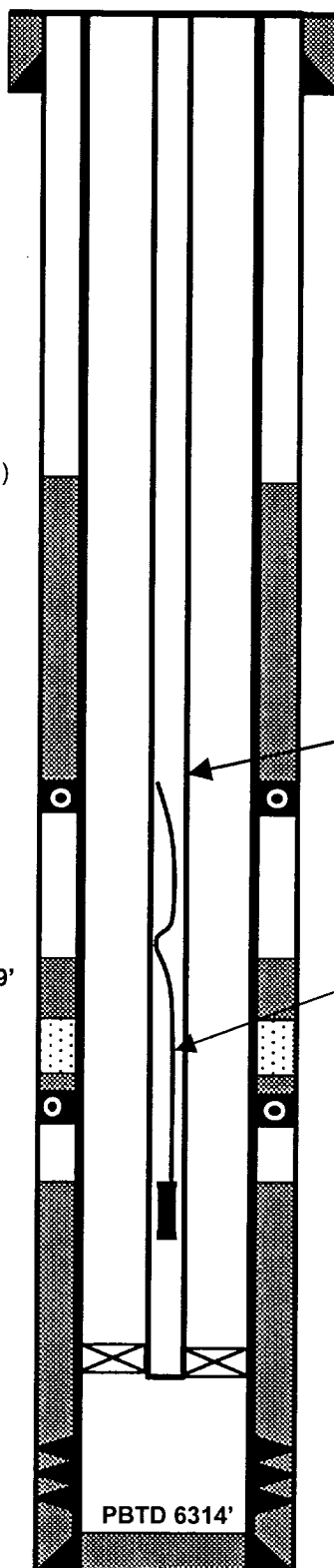
Mesaverde @ 2422'

Sqz leaks 3208' - 3339'
With 200 sxs (10/79)

Cliffhouse @ 3330'

Gallup @ 5148'

Dakota @ 6128'



8-5/8" 24#, J-55 Csg set @ 245'
Cmt w/140 sxs (Circulated to Surface)

WELL HISTORY

Oct '79: Pull tubing, set retainer 6098', swab well, acidize, swab well. Isolate casing leaks from 3208' to 3339', squeeze with 200 sxs, stuck packer. Cut tubing at 2987' and fished out. Drill out cement and PT casing. Drill out retainer and CO to 6292'. Land tubing with packer.

Apr '98: Swab well: FI at 1100', recovered 18 bbls.

May '98: Found tubing parted at 3357'. Caught and pulled packer at 6044'. CO with bailer to 6208', hit solid. Land tubing with packer.

Jun '98 & Sep '98 & Feb '99: Swab well

Jun '01: Slick line: Ran 2" broach, worked down through several tight spots, to 6237'. While pulling out, hung up at 4892'. Lost jar action, stuck. Dropped cut off bar to 1800'. Left 2" broach, 10' 1-1/2" bar, 1-1/2" spang jars, 1-1/2" rope socket and 1-1/4" cut off bar in hole.

2-3/8" Tubing set at 6132'
(191 joints, EUE, SN @ 6100' with
Loc-set packer at 6132')

DV Tool @ 1787'
Cmt with 200 sxs (359 cf)

TOC @ 2971' (Calc, 75%)

Fish in tubing, 3000' slick line
with 2" broach, bar, spang jar,
rope socket and cut off bar (6/01)

DV Tool @ 4393'
Cmt with 220 sxs (432 cf)

TOC @ 5087' (Calc, 80%)

Loc-set packer at 6132'

Dakota Perforations:
6168' - 6241'

4-1/2" 10.5#, J-55 Casing set @ 6348'
Cmt with 285 sxs (359 cf)

PBTD 6314'

TD 6368'

7-7/8" hole

Burroughs State #1

Proposed P&A

Basin Dakota

NW, (C) Section 36, T-26-N, R-11-W, San Juan County, NM

Today's Date: 4/10/02

Spud: 11/4/72

Completed: 11/27/71

Elevation: 6399' GL
6410' KB

12-1/4" hole

Ojo Alamo @ 620'

Kirtland @ 715'

Fruitland @ 1395'

Pictured Cliffs @ 1690'

Mesaverde @ 2422'

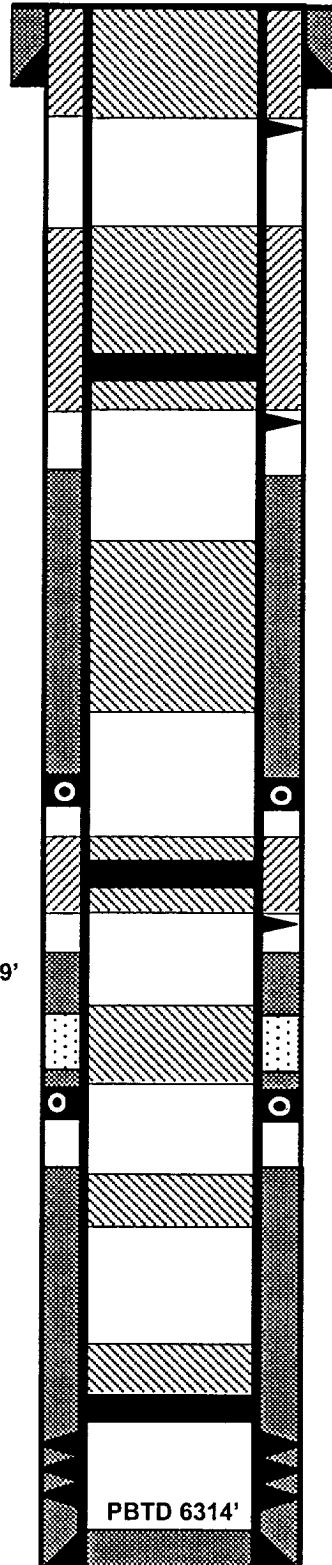
Sqz leaks 3208' – 3339'
With 200 sxs (10/79)

Cliffhouse @ 3330'

Gallup @ 5148'

Dakota @ 6128'

7-7/8" hole



8-5/8" 24#, J-55 Csg set @ 245'
Cmt w/140 sxs (Circulated to Surface)

Perforate @ 295'

Plug #7: 295' - Surface
Cement with 115 sxs

Cmt Retainer @ 715'

Perforate @ 765'

Plug #6: 765' – 570'
Cement with 94 sxs,
75 sxs outside casing
and 19 sxs inside.

TOC @ 1035' (T.S.)

Plug #5: 1740' – 1345'
Cement with 34 sxs

DV Tool @ 1787'
Cmt with 200 sxs (359 cf)

Cmt Retainer @ 2422'

Perforate @ 2472'

Plug #4: 2472' – 2372'
Cement with 51 sxs,
39 sxs outside casing
and 12 sxs.

TOC @ 2971' (Calc, 75%)

Plug #3: 3380' – 3280'
Cement with 12 sxs

DV Tool @ 4393'
Cmt with 220 sxs (432 cf)

TOC @ 5087' (Calc, 80%)

Plug #2: 5198' – 5098'
Cement with 12 sxs

Set Cmt Ret @ 6118'

Plug #1: 6118' – 6018'
Cement with 12 sxs

Dakota Perforations:
6168' – 6241'

4-1/2" 10.5#, J-55 Casing set @ 6348'
Cmt with 285 sxs (359 cf)