

UNITED STATES  
DEPARTMENT OF THE INTERIOR  
GEOLOGICAL SURVEY

## APPLICATION FOR PERMIT TO DRILL, DEEPEN, OR PLUG BACK

## 1a. TYPE OF WORK

DRILL ☒DEEPEN ☐PLUG BACK ☐

## b. TYPE OF WELL

OIL  
WELL ☐GAS  
WELL ☒

OTHER

SINGLE  
ZONE ☐MULTIPLE  
ZONE ☐

## 2. NAME OF OPERATOR

Jerome P. McHugh

## 3. ADDRESS OF OPERATOR

P. O. Box 234, Farmington, New Mexico 87401

## 4. LOCATION OF WELL (Report location clearly and in accordance with any State requirements.)\*

At surface

1850' FNL, 1850' FWL

At proposed prod. zone

## 14. DISTANCE IN MILES AND DIRECTION FROM NEAREST TOWN OR POST OFFICE\*

15 miles south Farmington, New Mexico

## 15. DISTANCE FROM PROPOSED\*

LOCATION TO NEAREST  
PROPERTY OR LEASE LINE, FT.  
(Also to nearest drlg. unit line, if any)

790'

## 18. DISTANCE FROM PROPOSED LOCATION\*

TO NEAREST WELL, DRILLING, COMPLETED,  
OR APPLIED FOR, ON THIS LEASE, FT.

1630'

## 16. NO. OF ACRES IN LEASE

479.46

## 19. PROPOSED DEPTH

1300'

17. NO. OF ACRES ASSIGNED  
TO THIS WELL

159.46

## 20. ROTARY OR CABLE TOOLS

Rotary

## 21. ELEVATIONS (Show whether DF, RT, GR, etc.)

5997' GR

## 22. APPROX. DATE WORK WILL START\*

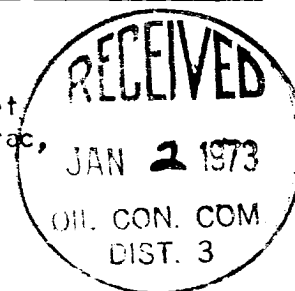
12-30-72

## 23.

## PROPOSED CASING AND CEMENTING PROGRAM

SIZE OF HOLE	SIZE OF CASING	WEIGHT PER FOOT	SETTING DEPTH	QUANTITY OF CEMENT
7 7/8	5 1/2	14	60	10 sacks
4 3/4	2 7/8	6.5	1300	100 sacks

Drill well using slim-hole technique to test Fruitland formation. Set 2 7/8" tubing for casing through formation, selectively perforate, frac, clean out, run 1 1/4" tubing, and complete well.



IN ABOVE SPACE DESCRIBE PROPOSED PROGRAM: If proposal is to deepen or plug back, give data on present productive zone and proposed new productive zone. If proposal is to drill or deepen directionally, give pertinent data on subsurface locations and measured and true vertical depths. Give blowout preventer program, if any.

## 24.

SIGNED Original Jerome P. McHughTITLE EngineerDATE 12-28-72

(This space for Federal or State office use)

PERMIT NO. \_\_\_\_\_

APPROVAL DATE \_\_\_\_\_

APPROVED BY [Signature]

TITLE \_\_\_\_\_

DATE \_\_\_\_\_

CONDITIONS OF APPROVAL, IF ANY:

**NEW MEXICO OIL CONSERVATION COMMISSION  
WELL LOCATION AND ACERAGE DEDICATION PLAT**

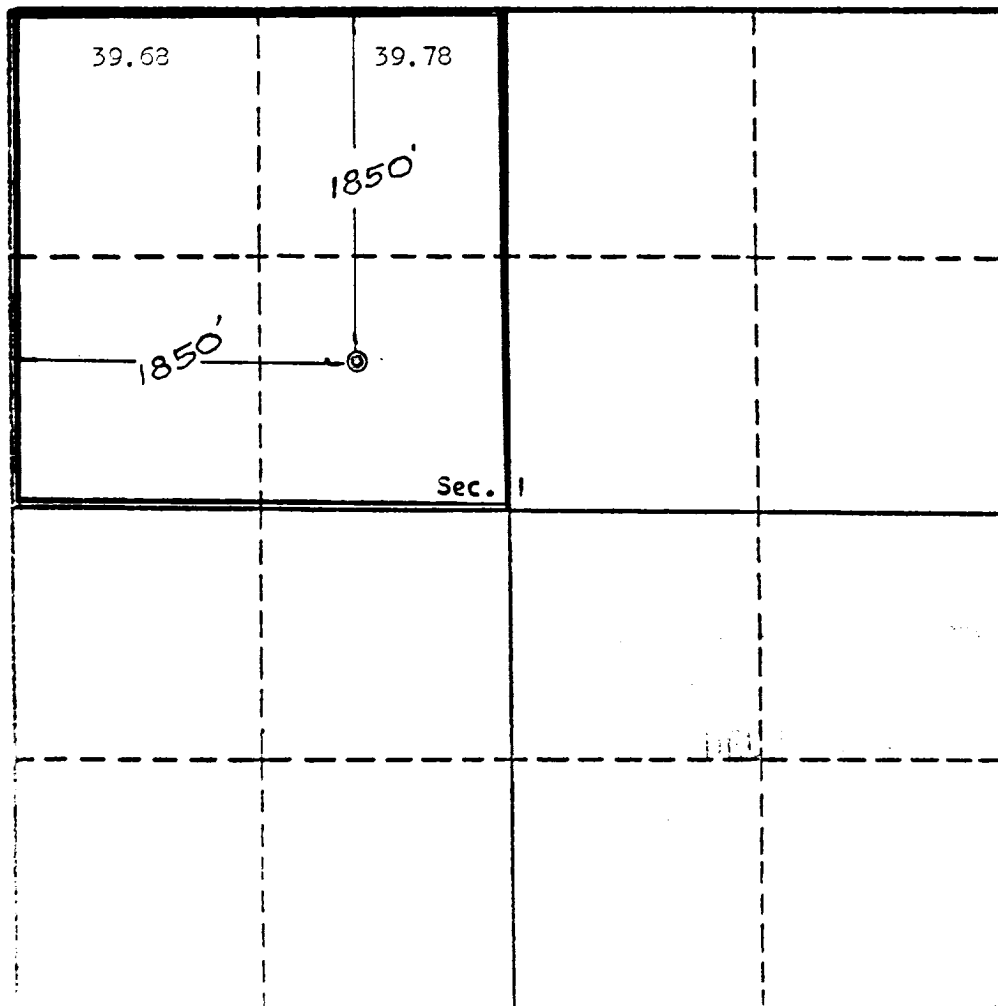
All distances must be from the outer boundaries of the Section

Operator <b>Jerome P. McHugh</b>			Lease <b>Gallegos</b>		Well No. <b>2</b>
Unit Letter <b>F</b>	Section <b>I</b>	Township <b>26 North</b>	Range <b>12 West</b>	County <b>San Juan</b>	
Actual Footage Location of Well: <div style="display: flex; justify-content: space-between;"> <span>1850 feet from the <b>North</b> line and</span> <span>1850 feet from the <b>West</b> line</span> </div>					
Ground Level Elev. <b>5997</b>	Producing Formation <b>Fruitland</b>	Pool <b>South Gallegos</b>	Dedicated Acreage: <b>159.46</b> Acres		

1. Outline the acreage dedicated to the subject well by colored pencil or hatchure marks on the plat below.
2. If more than one lease is dedicated to the well, outline each and identify the ownership thereof (both as to working interest and royalty),
3. If more than one lease of different ownership is dedicated to the well, have the interests of all owners been consolidated by communitization, unitization, force-pooling, etc?

( ) Yes ( ) No If answer is "yes," type of consolidation .....  
 If answer is "no," list the owners and tract descriptions which have actually consolidated. (Use reverse side of this form if necessary.) .....

No allowable will be assigned to the well until all interests have been consolidated (by communitization, unitization, forced-pooling, or otherwise) or until a non standard unit, eliminating such interests, has been approved by the Commission.



Scale, 1 inch = 1,000 feet

**CERTIFICATION**

I hereby certify that the information contained herein is true and complete to the best of my knowledge and belief.

Original signed by Thomas A. Dugan

Name  
Thomas A. Dugan  
 Position  
Engineer  
 Company  
Jerome P. McHugh  
 Date  
12-28-72

I hereby certify that the well location shown on this plat was plotted from field notes of actual surveys made by me or under my supervision, and that the same is true and correct to the best of my knowledge and belief.

Date Surveyed  
December 24, 1972  
 Registered Professional Engineer  
 and/or Land Surveyor

E. V. Echhawk  
 Certificate No. 3602  
**E. V. Echhawk L.S.**