

UNITED STATES  
DEPARTMENT OF THE INTERIOR  
GEOLOGICAL SURVEY

## APPLICATION FOR PERMIT TO DRILL, DEEPEN, OR PLUG BACK

## 1a. TYPE OF WORK

DRILL ☒DEEPEN ☐PLUG BACK ☐

## b. TYPE OF WELL

OIL  
WELL ☐GAS  
WELL ☒

OTHER

SINGLE  
ZONE ☒MULTIPLE  
ZONE ☐

## 2. NAME OF OPERATOR

TENNECO OIL COMPANY

## 3. ADDRESS OF OPERATOR

Suite 1200 Lincoln Tower Bldg. Denver, Colo. 80203

## 4. LOCATION OF WELL (Report location clearly and in accordance with any State requirements.)\*

At surface

1785' FNL and 1850 FEL

At proposed prod. zone

## 14. DISTANCE IN MILES AND DIRECTION FROM NEAREST TOWN OR POST OFFICE\*

## 15. DISTANCE FROM PROPOSED\*

LOCATION TO NEAREST  
PROPERTY OR LEASE LINE, FT.  
(Also to nearest drig. unit line, if any)

## 16. NO. OF ACRES IN LEASE

320

17. NO. OF ACRES ASSIGNED  
TO THIS WELL

320

## 18. DISTANCE FROM PROPOSED LOCATION\*

TO NEAREST WELL, DRILLING, COMPLETED,  
OR APPLIED FOR, ON THIS LEASE, FT.

## 19. PROPOSED DEPTH

6100

## 20. ROTARY OR CABLE TOOLS

Rotary

## 21. ELEVATIONS (Show whether DF, RT, GR, etc.)

6097.0

## 22. APPROX. DATE WORK WILL START\*

upon approval

## 23.

## PROPOSED CASING AND CEMENTING PROGRAM

SIZE OF HOLE	SIZE OF CASING	WEIGHT PER FOOT	SETTING DEPTH	QUANTITY OF CEMENT
12-1/4	8-5/8	24	600 +	Sufficient to circulate
7-7/8	4-1/2	11.6	6100+	Sufficient to cover Dakota

and Gallup in Lower Zones  
and possible production  
zones in Upper Hole.

RECEIVED

FEB 16 1973

Well to be drilled to approximate T.D. of 6100, Log well, and if commercial production is indicated, run 4-1/2" casing to T.D. and cement as required. Perforate casing and treat formation as necessary to establish commercial production. B.O.P. to be tested each 24 hours.

RECEIVED

FEB 15 1973

U. S. GEOLOGICAL SURV  
FARMINGTON, N.

IN ABOVE SPACE DESCRIBE PROPOSED PROGRAM: If proposal is to deepen or plug back, give data on present productive zone and proposed new productive zone. If proposal is to drill or deepen directionally, give pertinent data on subsurface locations and measured and true vertical depths. Give blowout preventer program, if any.

## 24.

SIGNED

W L Shaver

TITLE

Sr. Production Clerk

DATE

Feb. 13, 1973

(This space for Federal or State office use)

PERMIT NO.

APPROVAL DATE

APPROVED BY

21

TITLE

DATE

CONDITIONS OF APPROVAL, IF ANY:

# NEW MEXICO OIL CONSERVATION COMMISSION

## WELL LOCATION AND ACERAGE DEDICATION PLAT

All distances must be from the outer boundaries of the Section

Operator <b>TENNECO OIL COMPANY</b>			Lease <b>GALLEGOS</b>		Well No. <b>1</b>
Unit Letter <b>G</b>	Section <b>29</b>	Township <b>26 NORTH</b>	Range <b>11 WEST</b>	County <b>SAN JUAN</b>	
Actual Footage Location of Well: <b>1785</b> feet from the <b>NORTH</b> line and <b>1850</b> feet from the <b>EAST</b> line					
Ground Level Elev. <b>6097.0</b>	Producing Formation <b>DAKOTA</b>	Pool <b>BASIN DAKOTA</b>		Dedicated Acreage <b>320</b>	Acres

1. Outline the acreage dedicated to the subject well by colored pencil or hachure marks on the plat below.

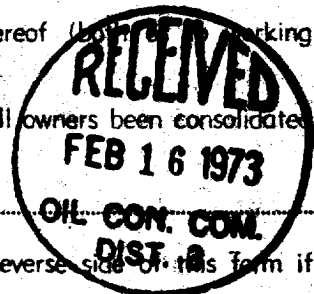
2. If more than one lease is dedicated to the well, outline each and identify the ownership thereof (by marking interest and royalty).

3. If more than one lease of different ownership is dedicated to the well, have the interests of all owners been consolidated by communitization, unitization, force-pooling, etc?

( ) Yes ( ) No If answer is "yes," type of consolidation .....

If answer is "no," list the owners and tract descriptions which have actually consolidated. (Use reverse side of this form if necessary.)

No allowable well be assigned to the well until all interests have been consolidated (by communitization, unitization, forced-pooling, or otherwise) or until a non standard unit, eliminating such interests, has been approved by the Commission.



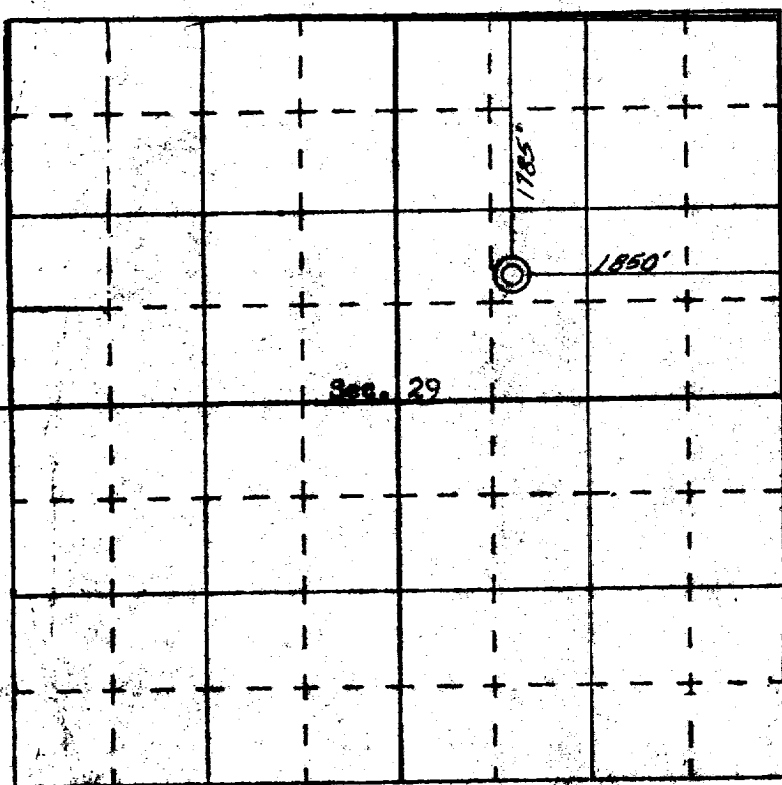
### CERTIFICATION

I hereby certify that the information contained herein is true and complete to the best of my knowledge and belief.

Name W. L. Shaver  
 Position W. L. Shaver  
Sr. Production Clerk  
 Company TENNECO OIL COMPANY  
 Date 2/12/73

I hereby certify that the well location shown on this plat was plotted from field notes of actual surveys made by me or under my supervision, and that the same is true and correct to the best of my knowledge and belief.

Date Surveyed 10 Feb 1973  
 Registered Professional Engineer and/or Licensed Surveyor  
 JAMES P. LEE  
 STATE OF NEW MEXICO  
 Certificate No. 1000



SCALE: 1 INCHES EQUALS 1 MILE

SAN JUAN ENGINEERING COMPANY, FARMINGTON, N. M.