

UNITED STATES
DEPARTMENT OF THE INTERIOR
GEOLOGICAL SURVEY

APPLICATION FOR PERMIT TO DRILL, DEEPEN, OR PLUG BACK

1a. TYPE OF WORK

DRILL ☒DEEPEN ☐PLUG BACK ☐

b. TYPE OF WELL

OIL
WELL ☐GAS
WELL ☒

OTHER

SINGLE
ZONE ☒MULTIPLE
ZONE ☐

2. NAME OF OPERATOR

TENNECO OIL COMPANY

3. ADDRESS OF OPERATOR

Suite 1200, Lincoln Tower Building, Denver, Colorado 80203

4. LOCATION OF WELL (Report location clearly and in accordance with any State requirements.)*

At surface

1166
1000 FSL and 2000 FWL

At proposed prod. zone

14. DISTANCE IN MILES AND DIRECTION FROM NEAREST TOWN OR POST OFFICE*

15. DISTANCE FROM PROPOSED*

LOCATION TO NEAREST

PROPERTY OR LEASE LINE, FT.

(Also to nearest drlg. unit line, if any)

16. NO. OF ACRES IN LEASE

17. NO. OF ACRES ASSIGNED
TO THIS WELL18. DISTANCE FROM PROPOSED LOCATION*
TO NEAREST WELL, DRILLING, COMPLETED,
OR APPLIED FOR, ON THIS LEASE, FT.

19. PROPOSED DEPTH

6050

20. ROTARY OR CABLE TOOLS

Rotary

21. ELEVATIONS (Show whether DF, RT, GR, etc.)

6200 GR - Estimated

22. APPROX. DATE WORK WILL START*

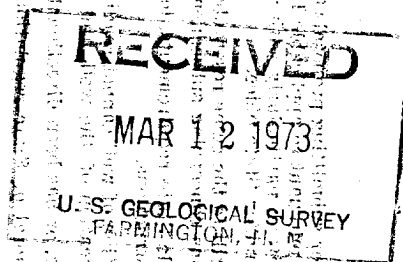
Upon Approval

23.

PROPOSED CASING AND CEMENTING PROGRAM

SIZE OF HOLE	SIZE OF CASING	WEIGHT PER FOOT	SETTING DEPTH	QUANTITY OF CEMENT
12-1/4	8-5/8	24	600	Sufficient to circulate
7-7/8	4-1/2	11.60	6050	2 stage - Lower Dakota & Gallup, Upper Fruitland, Kirtland & Pictured Cliff

Well to be drilled to approximate TD of 6050, log, and if commercial production is indicated, run 4-1/2" casing to TD and cement in two stages to cover zones as indicated. Perforate casing and treat formation as necessary to establish commercial production. BOP to be tested each 24 hrs.



IN ABOVE SPACE DESCRIBE PROPOSED PROGRAM: If proposal is to deepen or plug back, give data on present productive zone and proposed new productive zone. If proposal is to drill or deepen directionally, give pertinent data on subsurface locations and measured and true vertical depths. Give blowout preventer program, if any.

24.

SIGNED

TITLE Sr. Production Clerk

DATE March 9, 1973

(This space for Federal or State office use)

PERMIT NO.

APPROVAL DATE

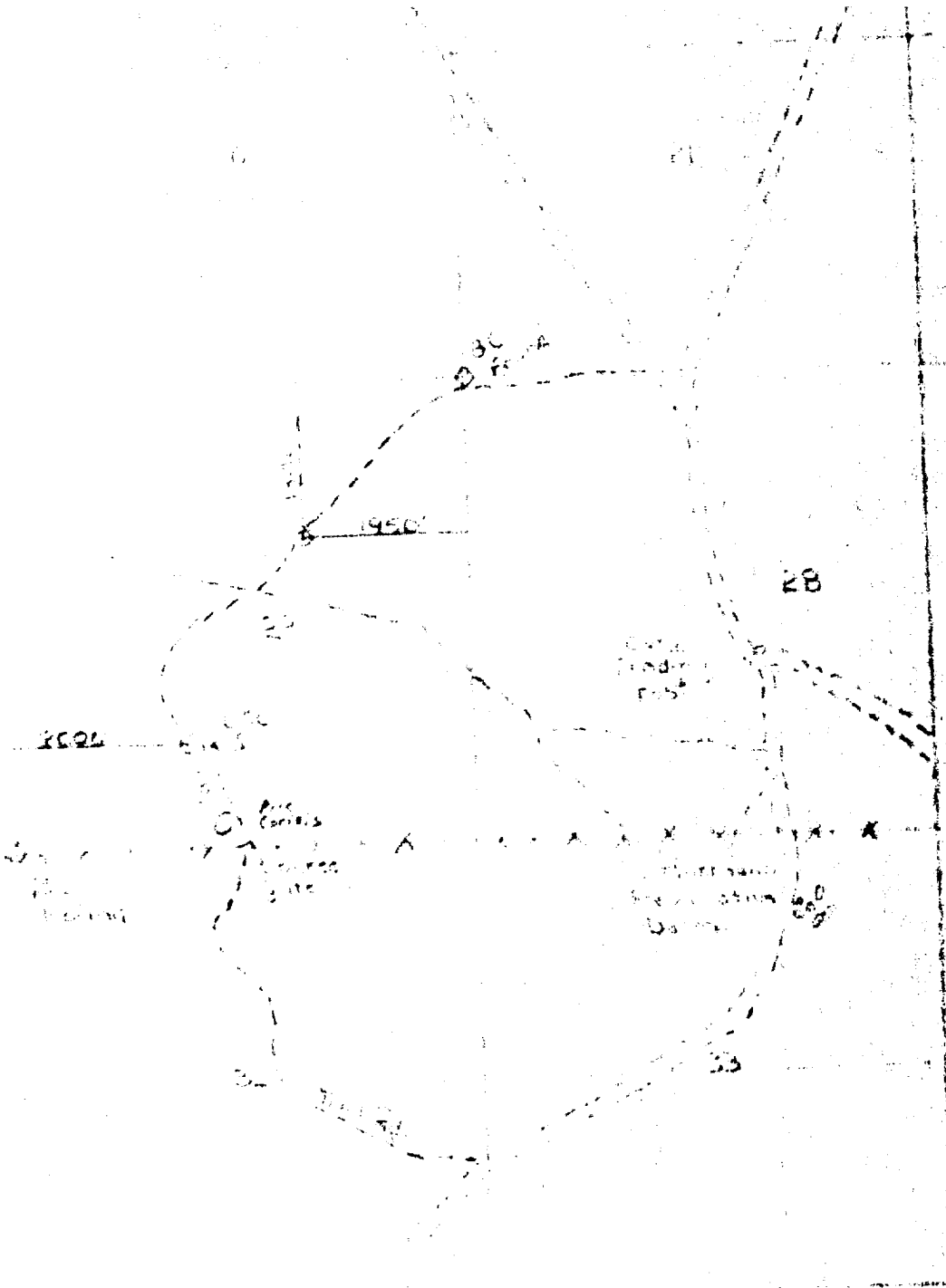
APPROVED BY

TITLE

DATE

CONDITIONS OF APPROVAL, IF ANY:

1-22-2



R11W

VICINITY MAP

FOR

TENNECO OIL COMPANY

CHALKING

CO. IN DEL. R1, T2N, R11W, N4EM

SAN JUAN COUNTY, NEW MEXICO

SCALE 1" = 1,000' DATE 2-8-73

San Juan Engineering Company

Farmington, New Mexico