

UNITED STATES  
DEPARTMENT OF THE INTERIOR  
GEOLOGICAL SURVEY

## APPLICATION FOR PERMIT TO DRILL, DEEPEN, OR PLUG BACK

30-045-21334

5. LEASE DESIGNATION AND SERIAL NO.

14-20-0603-3103

6. IF INDIAN, ALLOTTEE OR TRIBE NAME

7. UNIT AGREEMENT NAME

8. FARM OR LEASE NAME

Navajo Tribe "AR"

9. WELL NO.

10. FIELD AND POOL OR WILDCAT

Toolco D and Penn D

11. SEC. T., R., M., OR BLE.  
AND SURVEY OR AREA

Sec. 27, 325N-R10E

12. COUNTY OR PARTS

San Juan N. Mex.

12. TYPE OF WORK

DRILL ☒DEEPEN ☐PLUG BACK ☐

13. TYPE OF WELL

OIL  
WELL ☒GAS  
WELL ☐OTHER ☐SINGLE  
ZONE ☐MULTIPLE  
ZONE ☐

14. NAME OF OPERATOR

Texaco Inc., Attention T. Bliss

15. ADDRESS OF OPERATOR

P. O. Box 2100, Denver, Colorado 80201

16. LOCATION OF WELL (Report location clearly and in accordance with any State requirements.)\*

At surface

NE 1/4 NE 1/4 Sec. 27

660' FNL &amp; 310' FEL Sec. 27

At proposed prod. zone

17. DISTANCE IN MILES AND DIRECTION FROM NEAREST TOWN OR POST OFFICE\*

18. DISTANCE FROM PROPOSED\*

LOCATION TO NEAREST  
PROPERTY OR LEASE LINE, FT.  
(Also to nearest drig. unit line, if any)

660'

19. NO. OF ACRES IN LEASE

---

20. NO. OF ACRES ASSIGNED  
TO THIS WELL

---

21. DISTANCE FROM PROPOSED LOCATION\*

TO NEAREST WELL, DRILLING, COMPLETED,  
OR APPLIED FOR, ON THIS LEASE, FT.

2800'

22. PROPOSED DEPTH

5230

23. ROTARY OR CABLE TOOLS

Rotary

24. ELEVATIONS (Show whether DF, RT, GR, etc.)

5601 GR.

25. APPROX. DATE WORK WILL START\*

26.

## PROPOSED CASING AND CEMENTING PROGRAM

SIZE OF HOLE	SIZE OF CASING	WEIGHT PER FOOT	SETTING DEPTH	QUANTITY OF CEMENT
17-1/2	13-3/8	43#	100	Circ. 2000 lbs.
12-1/4	9-5/8	36#	1500	Circ. 5000 lbs.
8-3/4	7	24#	6230	Circ. 600' above pay zone.

Propose to drill subject well to increase oil recovery from 10' into Dine. Samples will be taken at 10' intervals from 5600' L. TD. No logs are planned. A DST is scheduled for the darker creek. Logs will be run on surface casing to TD. Prospectives zones will be perforated and treated as necessary. Blow-out preventer equipment will be 10' series 600 with 10' and 12' pipe racks hydraulically and manually controlled. Blow-out preventer will be tested at regular intervals. Necessary logs will be run.

APPROVED

ILLEGIBLE

JUL 21 1973

E. J. McGRATH

IN PROPOSED PROGRAM: If proposal is to deepen or plug back, give data on present productive zone and proposed new productive zone. If proposal is to drill or deepen directionally, give pertinent data on subsurface locations and measured and true vertical depths. Give blowout preventer program, if any.

27.

Signed: Tommie Bliss

SIGNED

TITLE

Dist. Supervisor

DATE

7-13-73

(This space for Federal or State office use)

PERMIT NO.

APPROVAL DATE

APPROVED BY

CONDITIONS OF APPROVAL, IF ANY

TITLE

DATE

JUL 21 1973

USGS (3)

OGCC (2)

TB - NLM - CGH - The Navajo Tribe

Farmington

Santa Fe

\*See Instructions On Reverse Side

U.S. GEOLOGICAL SURVEY  
FARMINGTON, N.M.

**NEW MEXICO OIL CONSERVATION COMMISSION  
WELL LOCATION AND ACREAGE DEDICATION PLAT**

Form C-102  
Supersedes C-128  
Effective 1-4-65

All distances must be from the outer boundaries of the Section

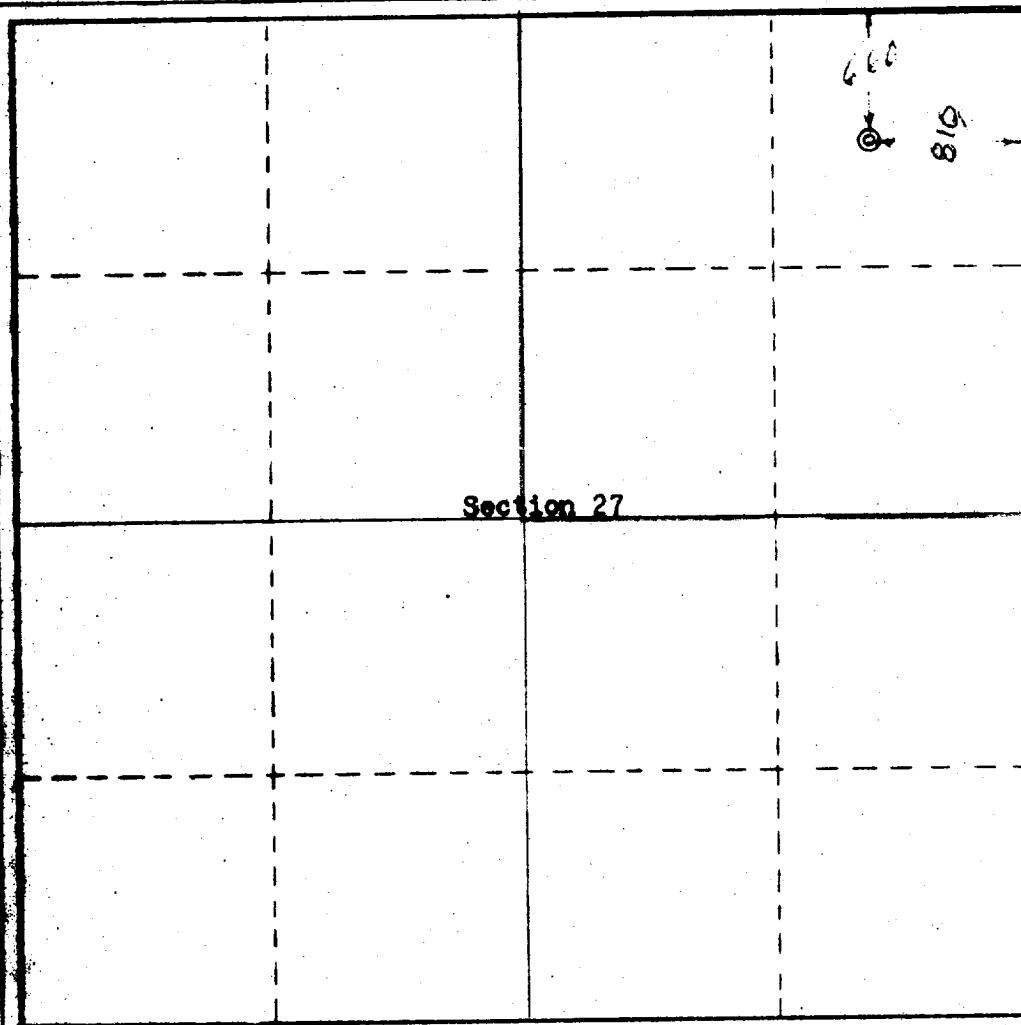
Operator <b>Texaco Inc.</b>			Lease <b>Navajo Tribe "AR"</b>		Well No. <b>3</b>
Unit Letter <b>A</b>	Section <b>27</b>	Township <b>26 North</b>	Range <b>18 West</b>	County <b>San Juan</b>	
Actual Footage Location of Well: <b>660</b> feet from the <b>North</b> line and <b>810</b> feet from the <b>East</b> line					
Ground Level Elev. <b>5601</b>	Producing Formation <b>Pennsylvanian</b>		Pool <b>Tocito Dome Penn. "D"</b>		Dedicated Acreage: <b>160</b> Acres

1. Outline the acreage dedicated to the subject well by colored pencil or hachure marks on the plat below.
2. If more than one lease is dedicated to the well, outline each and identify the ownership thereof (both as to working interest and royalty).
3. If more than one lease of different ownership is dedicated to the well, have the interests of all owners been consolidated by communitization, unitization, force-pooling, etc?

☐ Yes    ☐ No    If answer is "yes," type of consolidation \_\_\_\_\_

If answer is "no," list the owners and tract descriptions which have actually been consolidated. (Use reverse side of this form if necessary.) \_\_\_\_\_

No allowable will be assigned to the well until all interests have been consolidated (by communitization, unitization, forced-pooling, or otherwise) or until a non-standard unit, eliminating such interests, has been approved by the Commission.



**CERTIFICATION**

I hereby certify that the information contained herein is true and complete to the best of my knowledge and belief

*Tommie Bliss*

Name  
**Tommie Bliss**

Position  
**District Superintendent**

Company  
**Texaco Inc.**

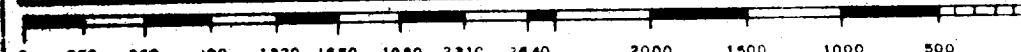
Date  
**August 30, 1973**

I hereby certify that the well location shown on this plat was plotted from field notes of actual surveys made by me or under my supervision, and that the same is true and correct to the best of my knowledge and belief.

Date Surveyed  
**July 27, 1973**

Registered Professional Engineer and  
**308**

Certification  
**STATE OF NEW MEXICO**



OGCC(2)    TB    ARM    CGH  
Aztec