

STATE OF NEW MEXICO
ENERGY AND MINERALS DEPARTMENT

OIL CONSERVATION DIVISION

P. O. BOX 2088
SANTA FE, NEW MEXICO 87501

Form C-102
Revised 10-1-78

All distances must be from the outer boundaries of the Section.

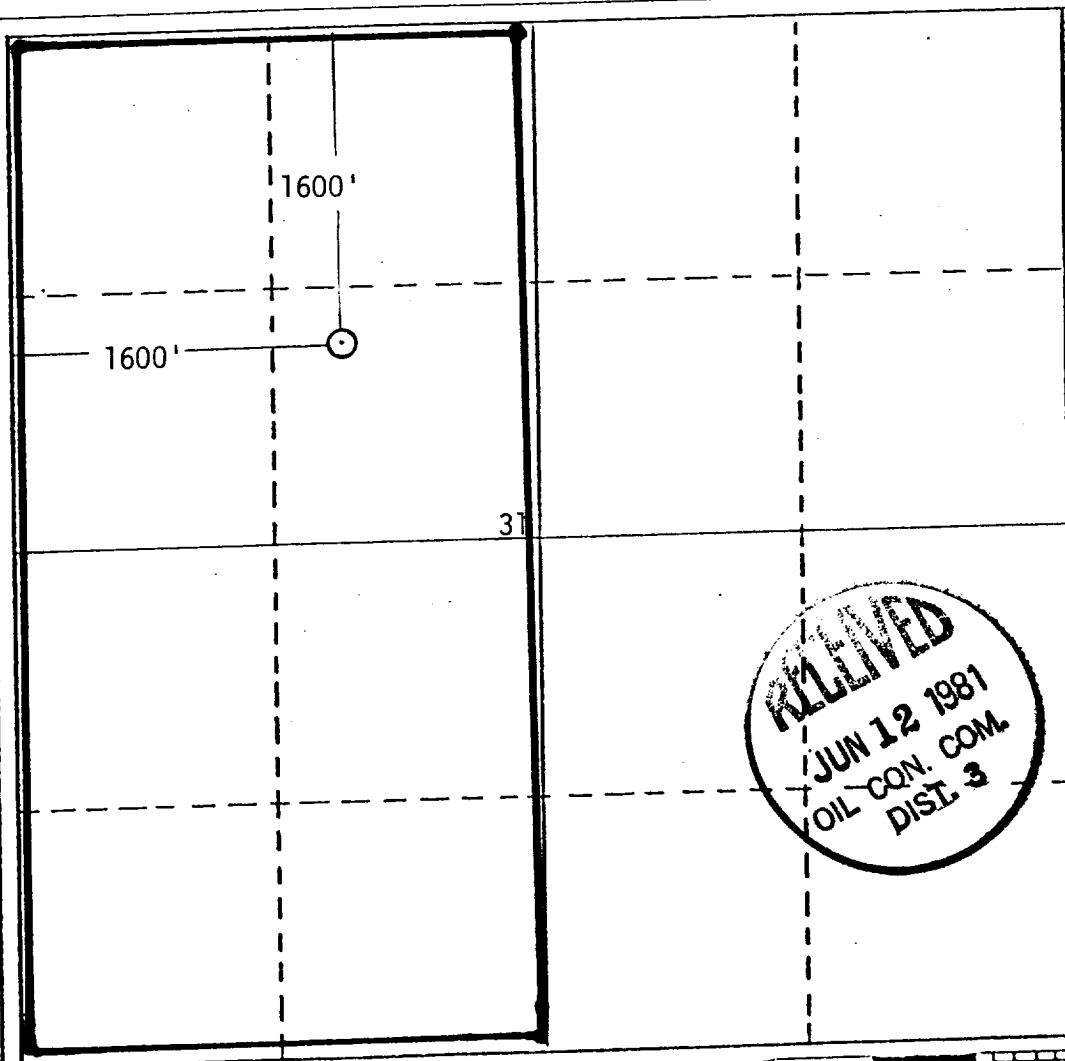
Operator DUGAN PRODUCTION CORP.		Lease Windfall		Well No. 10
Unit Letter F	Section 31	Township 26N	Range 11W	County San Juan
Actual Footage Location of Well: 1600' feet from the North line and 1600' feet from the West line				
Ground Level Elev. 6142'	Producing Formation Dakota	Pool Basin Dakota	Dedicated Acreage: 320 3/4 .00 Acres	

1. Outline the acreage dedicated to the subject well by colored pencil or hachure marks on the plat below.
2. If more than one lease is dedicated to the well, outline each and identify the ownership thereof (both as to working interest and royalty). **NA**
3. If more than one lease of different ownership is dedicated to the well, have the interests of all owners been consolidated by communitization, unitization, force-pooling, etc?

☐ Yes ☐ No If answer is "yes," type of consolidation _____

If answer is "no," list the owners and tract descriptions which have actually been consolidated. (Use reverse side of this form if necessary.) _____

No allowable will be assigned to the well until all interests have been consolidated (by communitization, unitization, forced-pooling, or otherwise) or until a non-standard unit, eliminating such interests, has been approved by the Division.



CERTIFICATION

I hereby certify that the information contained herein is true and complete to the best of my knowledge and belief.

Name **Tom Dugan**
Position **Petroleum Engineer**
Company **Dugan Production Corp.**
Date **6-11-81**

I hereby certify that the well location shown on this plat was plotted from field notes of actual surveys made by me or under my supervision, and that the same is true and correct to the best of my knowledge and belief.

Date Surveyed **6-3-81**
Registered Professional Engineer and/or Land Surveyor **Thomas A. Dugan**
Thomas A. Dugan PE/LS
Certificate No. **2373**