

# El Paso Natural Gas Company

El Paso, Texas 79917

January 15, 1974

ADDRESS REPLY TO  
POST OFFICE BOX 959  
FARMINGTON NEW MEXICO 87401

Mr. P. T. McGrath  
U. S. Geological Survey  
Post Office Box 959  
Farmington, New Mexico 87401

Re: Application for Permit to Drill  
Huerfano Unit #259  
NW/4 Section 6, T-26-N, R-10-W  
Basin Dakota

Dear Mr. McGrath:

Details regarding existing roads, pipelines, wells, etc. relative to the above well location are included on the previously submitted base maps, "Field Road Map" and "Composite Map No. 1".

The proposed new well location, new roads and new pipeline are shown on the attached plat along with connecting existing roads and pipelines in the vicinity of the proposed new well.

Water for drilling and completion operations will be obtained from the following location:

Water hole - Section 13, T-26-N, R-10-W  
Waste material will be disposed of by burial in the burn pit, latrine, or reserve pit as applicable. There will be no camp nor air strip associated with drilling this well. Upon completion or abandonment of this well, the location will be cleaned and leveled and a dry hole marker placed, if applicable.

Yours very truly,

*D. G. Brisco*

D. G. Brisco  
Drilling Clerk

pb



UNITED STATES  
DEPARTMENT OF THE INTERIOR  
GEOLOGICAL SURVEY30-045-21411  
5. LEASE DESIGNATION AND SERIAL NO.  
SF 080425-A

## APPLICATION FOR PERMIT TO DRILL, DEEPEN, OR PLUG BACK

## 1a. TYPE OF WORK

DRILL ☒DEEPEN ☐PLUG BACK ☐

## b. TYPE OF WELL

OIL  
WELL ☐GAS  
WELL ☒

OTHER

SINGLE  
ZONE ☒MULTIPLE  
ZONE ☐

## 2. NAME OF OPERATOR

El Paso Natural Gas Company

## 3. ADDRESS OF OPERATOR

PO Box 990, Farmington, NM 87401

## 4. LOCATION OF WELL (Report location clearly and in accordance with any State requirements.\*)

At surface

1180'N, 1500'W

At proposed prod. zone

## 6. IF INDIAN, ALLOTTEE OR TRIBE NAME

## 7. UNIT AGREEMENT NAME

Huerfano Unit

## 8. FARM OR LEASE NAME

Huerfano Unit

## 9. WELL NO.

259

## 10. FIELD AND POOL, OR WILDCAT

Basin Dakota

11. SEC., T., R., M., OR BLK.  
AND SURVEY OR AREASec. 6, T-26-N, R-10-W  
NMPM

## 12. COUNTY OR PARISH

San Juan

## 13. STATE

NM

## 15. DISTANCE FROM PROPOSED\*

LOCATION TO NEAREST  
PROPERTY OR LEASE LINE, FT.  
(Also to nearest drlg. unit line, if any)

## 16. NO. OF ACRES IN LEASE

17. NO. OF ACRES ASSIGNED  
TO THIS WELL

317.11

18. DISTANCE FROM PROPOSED LOCATION\*  
TO NEAREST WELL, DRILLING, COMPLETED,  
OR APPLIED FOR, ON THIS LEASE, FT.

## 19. PROPOSED DEPTH

6726'

## 20. ROTARY OR CABLE TOOLS

Rotary

## 21. ELEVATIONS (Show whether DF, RT, GR, etc.)

6479'GL

## 22. APPROX. DATE WORK WILL START\*

## 23.

## PROPOSED CASING AND CEMENTING PROGRAM

SIZE OF HOLE	SIZE OF CASING	WEIGHT PER FOOT	SETTING DEPTH	QUANTITY OF CEMENT
12 1/4"	8 5/8"	24.0#	200'	183 cu. ft. to circulate
7 7/8"	4 1/2"	10.5#	6726'	1224 cu. ft. - 3 stages

Production Casing cement:

1st stage - 347 cu. ft. to cover Gallup formation.

2nd stage - 412 cu. ft. to cover Mesa Verde formation.

3rd stage - 465 cu. ft. to cover Ojo Alamo formation.


Selectively perforate and sandwater fracture the Dakota formation.

The W/2 of Section 6 is dedicated to this well

IN ABOVE SPACE DESCRIBE PROPOSED PROGRAM: If proposal is to deepen or plug back, give data on present productive zone and proposed new productive zone. If proposal is to drill or deepen directionally, give pertinent data on subsurface locations and measured and true vertical depths. Give blowout preventer program, if any.

## 24.

SIGNED



TITLE

Drilling Clerk

DATE January 15, 1974

(This space for Federal or State office use)

PERMIT NO.

APPROVAL DATE

APPROVED BY

TITLE

DATE

CONDITIONS OF APPROVAL, IF ANY:

NEW MEXICO OIL CONSERVATION COMMISSION  
WELL LOCATION AND ACREAGE DEDICATION PLAT

Form C-102  
Supersedes C-128  
Effective 1-1-65

All distances must be from the outer boundaries of the Section.

Operator <b>EL PASO NATURAL GAS COMPANY</b>		Lease <b>HUERFANO UNIT (SF-080125-A)</b>		Well No. <b>259</b>
Unit Letter <b>C</b>	Section <b>6</b>	Township <b>26-N</b>	Range <b>10-W</b>	County <b>SAN JUAN</b>
Actual Footage Location of Well: <b>1180</b> feet from the <b>NORTH</b> line and <b>1500</b> feet from the <b>WEST</b> line				
Ground Level Elev. <b>6479</b>	Producing Formation <b>DAKOTA</b>	Pool <b>BASIN DAKOTA</b>	Dedicated Acreage: <b>317.11</b> Acres	

1. Outline the acreage dedicated to the subject well by colored pencil or hachure marks on the plat below.

2. If more than one lease is dedicated to the well, outline each and identify the ownership thereof (but not to work up interest and royalty).

3. If more than one lease of different ownership is dedicated to the well, have the interests of all owners been consolidated by communitization, unitization, force-pooling, etc?

☐ Yes ☐ No If answer is "yes," type of consolidation Unitization

If answer is "no," list the owners and tract descriptions which have actually been consolidated. (Use reverse side of this form if necessary.)

No allowable will be assigned to the well until all interests have been consolidated (by communitization, unitization, forced-pooling, or otherwise) or until a non-standard unit, eliminating such interests, has been approved by the Commission.

CERTIFICATION

I hereby certify that the information contained herein is true and complete to the best of my knowledge and belief.

Original Signed by

**D. G. Brisco**

Name

**Drilling Clerk**

Position

**El Paso Natural Gas Co.**

Company

**January 15, 1974**

Date

I hereby certify that the well location shown on this plat was plotted from field notes of actual surveys made by me or under my supervision, and that the same is true and correct to the best of my knowledge and belief.

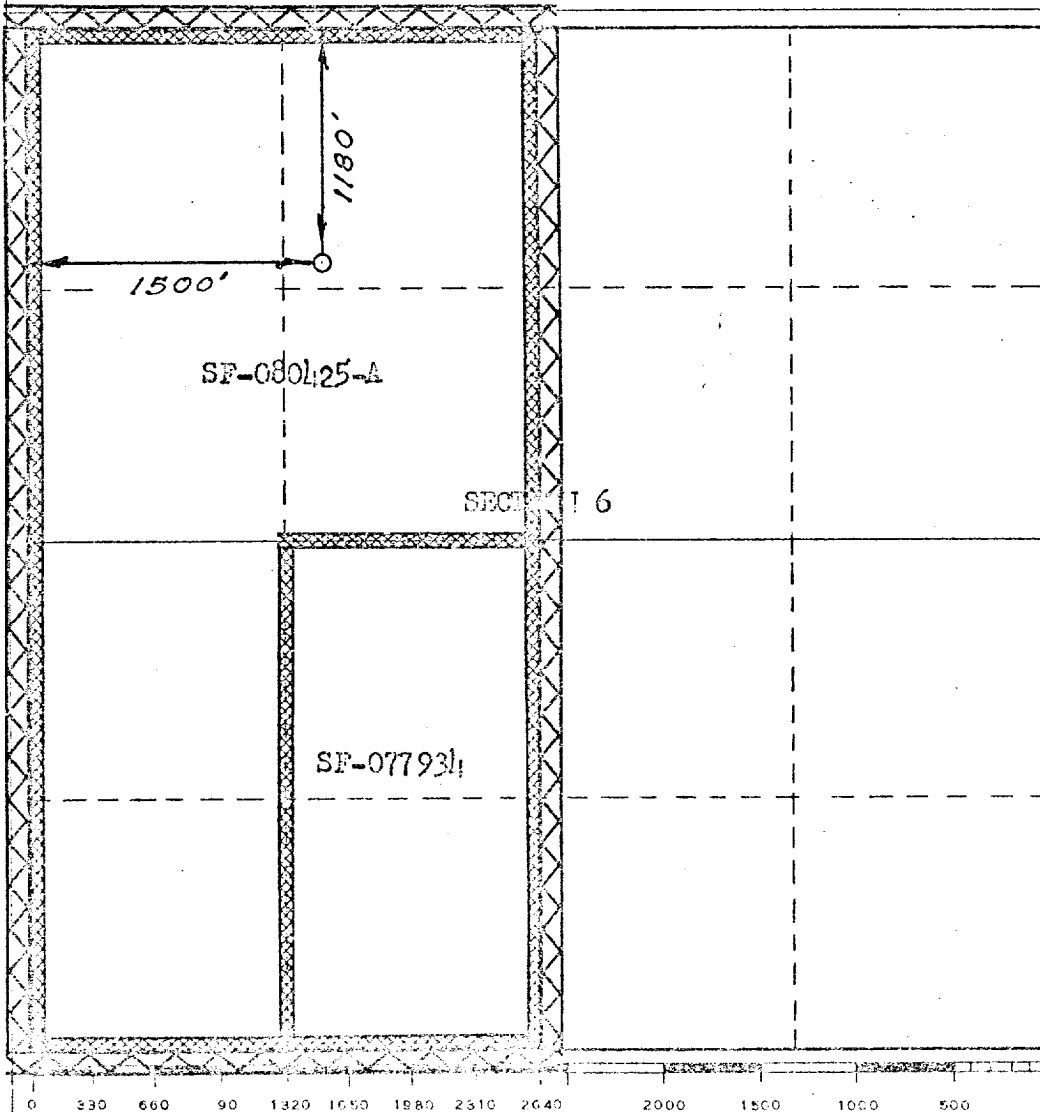
Date Surveyed

**DECEMBER 12, 1973**

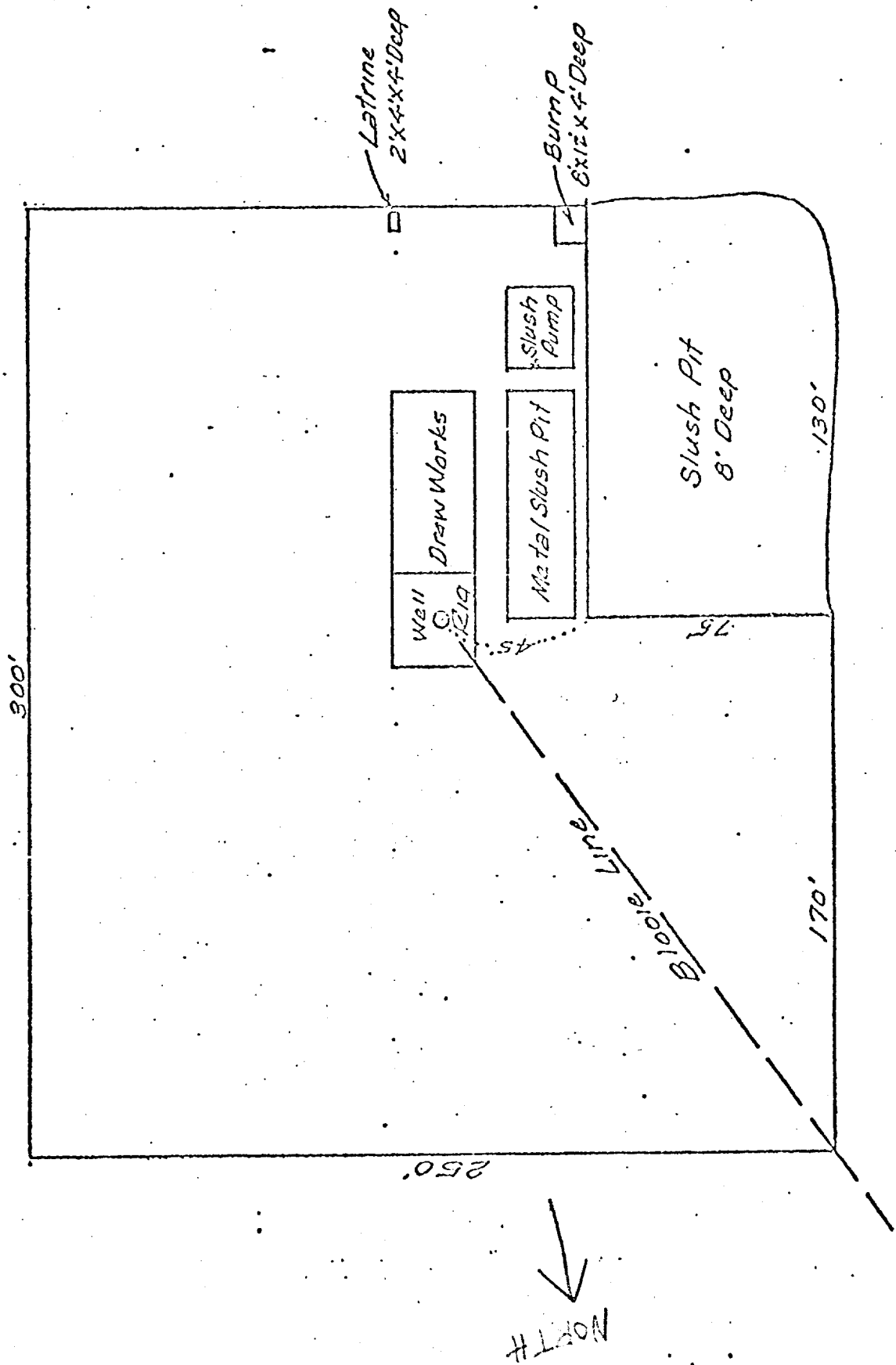
Registered Professional Engineer and/or Land Surveyor

*David Wilson*

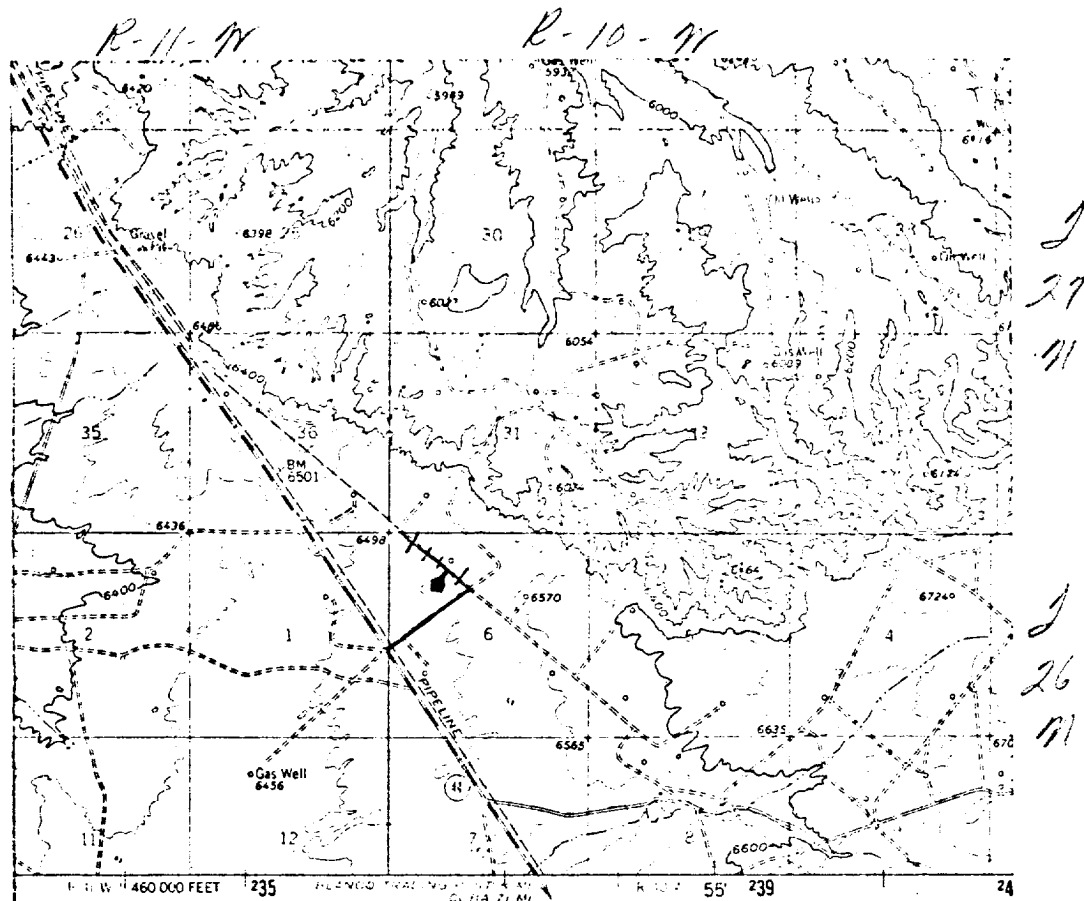
Estimate No. **1760**



H. W. Co., Dallas, TX 75209  
 11/14 Sec. 6, T-26-N, R-10-W  
 Smith County, Oklahoma



*Quipac Hill # 259*  
*2320 ft Elev 6, 9-26-71, R-10-71*



ished by the Geological Survey

SS

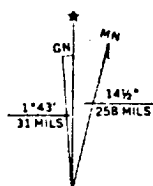
tric methods from aerial

ld checked 1960

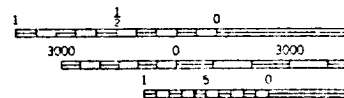
orth American datum

w Mexico coordinate system,

erse Mercator grid ticks,



UTM GRID AND 1960 MAGNETIC NORTH  
DECLINATION AT CENTER OF SHEET



THIS MAP IS  
FOR SALE BY U. S. GEOLOGICAL  
A FOLDER DESCRIBING

# LEGEND OF RIGHT-OF-WAYS

EXISTING ROADS	— — — — —
EXISTING PIPELINES	— + — + — + —
EXISTING ROAD & PIPELINE	— + — + — + —
PROPOSED ROADS	— — — — —
PROPOSED PIPELINES	+ + + + +
PROPOSED ROAD & PIPELINE	+ + + + +