

30-045-21736

UNITED STATES
DEPARTMENT OF THE INTERIOR
GEOLOGICAL SURVEY

APPLICATION FOR PERMIT TO DRILL, DEEPEN, OR PLUG BACK

1a. TYPE OF WORK DRILL ☒ DEEPEN ☐ PLUG BACK ☐b. TYPE OF WELL
OIL WELL ☐ GAS WELL ☒ OTHER ☐ SINGLE ZONE ☐ MULTIPLE ZONE ☐

2. NAME OF OPERATOR

Dugan Production Corp.

3. ADDRESS OF OPERATOR

Box 234, Farmington, New Mexico 87401

4. LOCATION OF WELL (Report location clearly and in accordance with any State requirements.)
At surface 790' FSL -- 1830' FEL

At proposed prod. zone

14. DISTANCE IN MILES AND DIRECTION FROM NEAREST TOWN OR POST OFFICE*

22 miles south Farmington, New Mexico

15. DISTANCE FROM PROPOSED*
LOCATION TO NEAREST
PROPERTY OR LEASE LINE, FT.
(Also to nearest drlg. unit line, if any)

790'

18. DISTANCE FROM PROPOSED LOCATION*
TO NEAREST WELL, DRILLING, COMPLETED,
OR APPLIED FOR, ON THIS LEASE, FT.

1/2 mile

16. NO. OF ACRES IN LEASE

320

19. PROPOSED DEPTH

1150'

17. NO. OF ACRES ASSIGNED
TO THIS WELL

160

20. ROTARY OR CABLE TOOLS

Rotary

21. ELEVATIONS (Show whether DF, RT, GR, etc.)

6006' GR

22. APPROX. DATE WORK WILL START*

3-1-75

23. PROPOSED CASING AND CEMENTING PROGRAM

SIZE OF HOLE	SIZE OF CASING	WEIGHT PER FOOT	SETTING DEPTH	QUANTITY OF CEMENT
7-7/8"	5-1/2"	14#	50'	10 SX
4-3/4"	2-7/8"	6.4#	1150'	100 SX

Plan to test Pictured Cliffs formation using slim hole technique. Plan to set 2-7/8" tubing through Pictured Cliffs formation, selectively perforate, frac well using 16,000 gals water and 16,000 lbs sand, run 1-1/4" tubing, swab well in, and put on production.

We do not plan to use a blowout preventer while drilling well. We will install master valve and stripper head while completing.

FEB 24 1975

U. S. GEOLOGICAL SURVEY

IN ABOVE SPACE DESCRIBE PROPOSED PROGRAM: If proposal is to deepen or plug back, give data on present productive zone and proposed new productive zone. If proposal is to drill or deepen directionally, give pertinent data on subsurface locations and measured and true vertical depths. Give blowout preventer program, if any.

24.

Original signed by T. A. Dugan

SIGNED Thomas A. Dugan

TITLE Petroleum Engineer

DATE 2-21-75

(This space for Federal or State office use)

PERMIT NO.

APPROVAL DATE

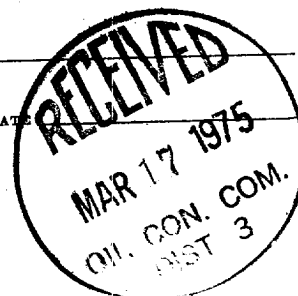
APPROVED BY

TITLE

DATE

CONDITIONS OF APPROVAL, IF ANY:

*See Instructions On Reverse Side



**NEW MEXICO OIL CONSERVATION COMMISSION
WELL LOCATION AND ACREAGE DEDICATION PLAT**

Form C-102
Supersedes C-128
Effective 1-1-65

All distances must be from the outer boundaries of the Section.

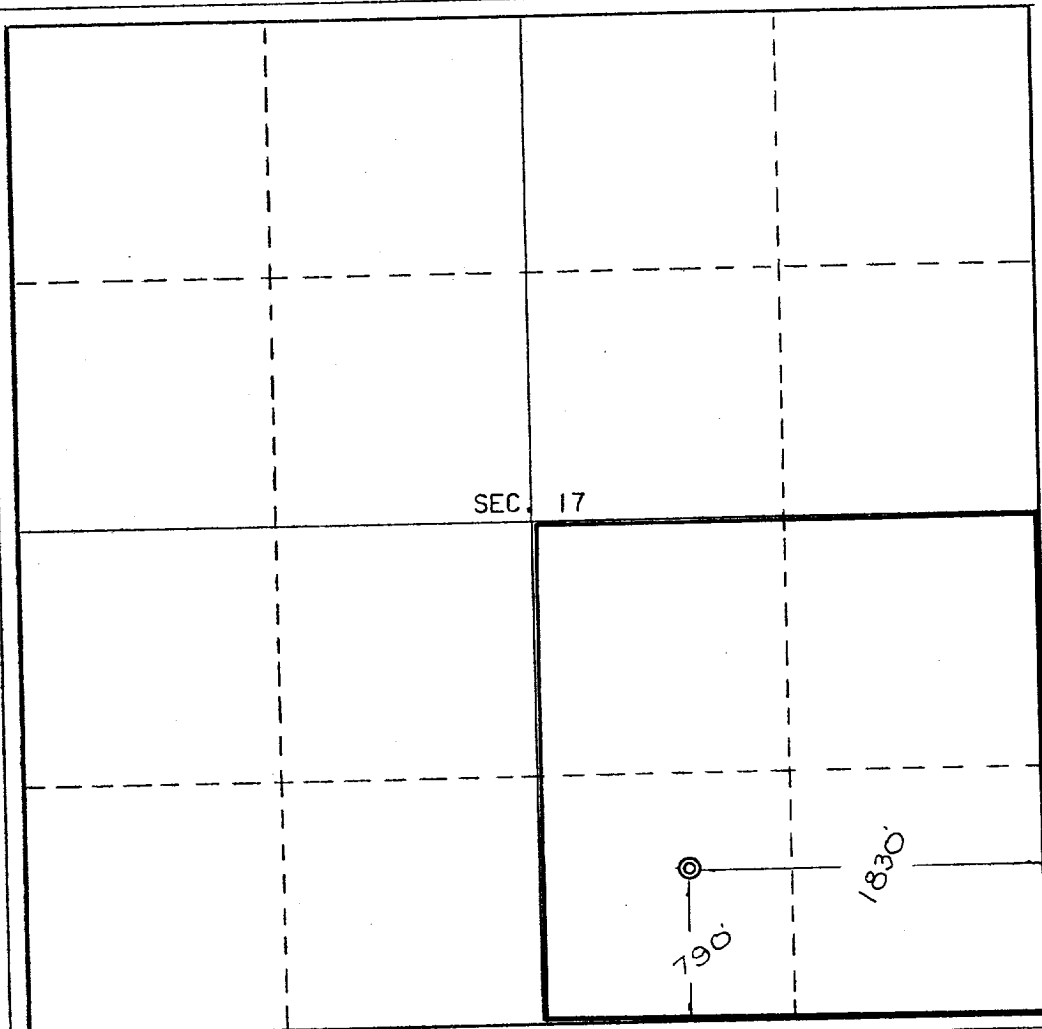
Operator DUGAN PRODUCTION CORPORATION			Lease Chaco Plant		Well No. 1
Unit Letter 0	Section 17	Township 26 North	Range 12 West	County San Juan	
Actual Footage Location of Well: 790 feet from the South line and 1830 feet from the East line					
Ground Level Elev. 6006	Producing Formation Pictured Cliffs		Pool Wildcat		Dedicated Acreage: 160 Acres

1. Outline the acreage dedicated to the subject well by colored pencil or hachure marks on the plat below.
2. If more than one lease is dedicated to the well, outline each and identify the ownership thereof (both as to working interest and royalty).
3. If more than one lease of different ownership is dedicated to the well, have the interests of all owners been consolidated by communitization, unitization, force-pooling, etc?

☐ Yes ☐ No If answer is "yes," type of consolidation _____

If answer is "no," list the owners and tract descriptions which have actually been consolidated. (Use reverse side of this form if necessary.) _____

No allowable will be assigned to the well until all interests have been consolidated (by communitization, unitization, forced-pooling, or otherwise) or until a non-standard unit, eliminating such interests, has been approved by the Commission.

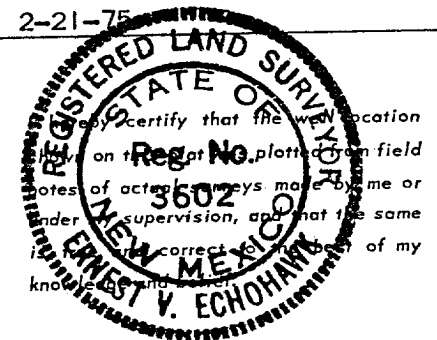


CERTIFICATION

I hereby certify that the information contained herein is true and complete to the best of my knowledge and belief.

Original of plat by **A. A. Dugan**

Name Thomas A. Dugan
Position Petroleum Engineer
Company Dugan Production Corp.
Date 2-21-75



Date Surveyed February 1, 1975
Registered Professional Engineer and/or Land Surveyor

E. V. Echohawk
Certificate No. **3602**
E.V. Echohawk LS

