

Form 9-331 C  
(May 1963)

SUBMIT IN TRIPLICATE\*

(Other instructions on  
reverse side)Form approved.  
Budget Bureau No. 42-R1425.

30-045-21738

UNITED STATES  
DEPARTMENT OF THE INTERIOR  
GEOLOGICAL SURVEY

## APPLICATION FOR PERMIT TO DRILL, DEEPEN, OR PLUG BACK

## 1a. TYPE OF WORK

DRILL ☒DEEPEN ☐PLUG BACK ☐

## b. TYPE OF WELL

OIL  
WELL ☐GAS  
WELL ☒

OTHER

SINGLE  
ZONE ☐MULTIPLE  
ZONE ☐

## 2. NAME OF OPERATOR

Dugan Production Corp.

## 3. ADDRESS OF OPERATOR

Box 234, Farmington, New Mexico 87401

## 4. LOCATION OF WELL (Report location clearly and in accordance with any State requirements.)

At surface

1810' FWL — 1160' FNL

At proposed prod. zone

## 14. DISTANCE IN MILES AND DIRECTION FROM NEAREST TOWN OR POST OFFICE\*

22 miles south Farmington, New Mexico

## 15. DISTANCE FROM PROPOSED\*

LOCATION TO NEAREST  
PROPERTY OR LEASE LINE, FT.  
(Also to nearest drlg. unit line, if any)

1160'

## 16. NO. OF ACRES IN LEASE

160

17. NO. OF ACRES ASSIGNED  
TO THIS WELL

160

18. DISTANCE FROM PROPOSED LOCATION\*  
TO NEAREST WELL, DRILLING, COMPLETED,  
OR APPLIED FOR, ON THIS LEASE, FT.

None

## 19. PROPOSED DEPTH

1150'

## 20. ROTARY OR CABLE TOOLS

Rotary

## 21. ELEVATIONS (Show whether DF, RT, GR, etc.)

5996' GR

## 22. APPROX. DATE WORK WILL START\*

3-1-75

## 23.

## PROPOSED CASING AND CEMENTING PROGRAM

SIZE OF HOLE	SIZE OF CASING	WEIGHT PER FOOT	SETTING DEPTH	QUANTITY OF CEMENT
7-7/8"	5-1/2"	14#	50'	10 sx
4-3/4"	2-7/8"	6.4#	1150'	100 sx

Plan to test Pictured Cliffs formation using slim hole technique. Plan to set 2-7/8" tubing through Pictured Cliffs formation, selectively perforate, frac well using 16,000 gals water and 16,000 lbs sand, run 1-1/4" tubing, swab well in, and put on production.

We do not plan to use a blowout preventer while drilling well. We will install master valve and stripper head while completing.

IN ABOVE SPACE DESCRIBE PROPOSED PROGRAM: If proposal is to deepen or plug back, give data on present productive zone and proposed new productive zone. If proposal is to drill or deepen directionally, give pertinent data on subsurface locations and measured and true vertical depths. Give blowout preventer program, if any.

## 24.

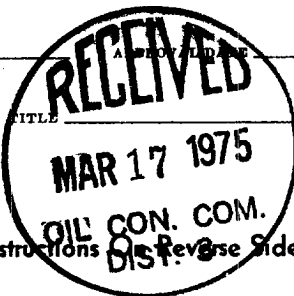
SIGNED Original signed by T. A. Dugan  
Thomas A. DuganTITLE Petroleum EngineerDATE 2-24-75

(This space for Federal or State office use)

PERMIT NO. \_\_\_\_\_

APPROVED BY \_\_\_\_\_

CONDITIONS OF APPROVAL, IF ANY:



\*See Instructions on Reverse Side

RECEIVED

DATE  
FEB 25 1975U. S. GEOLOGICAL SURVEY  
FARMINGTON, N. M.

**NEW MEXICO OIL CONSERVATION COMMISSION  
WELL LOCATION AND ACREAGE DEDICATION PLAT**

Form C-102  
Supersedes C-128  
Effective 1-1-65

All distances must be from the outer boundaries of the Section.

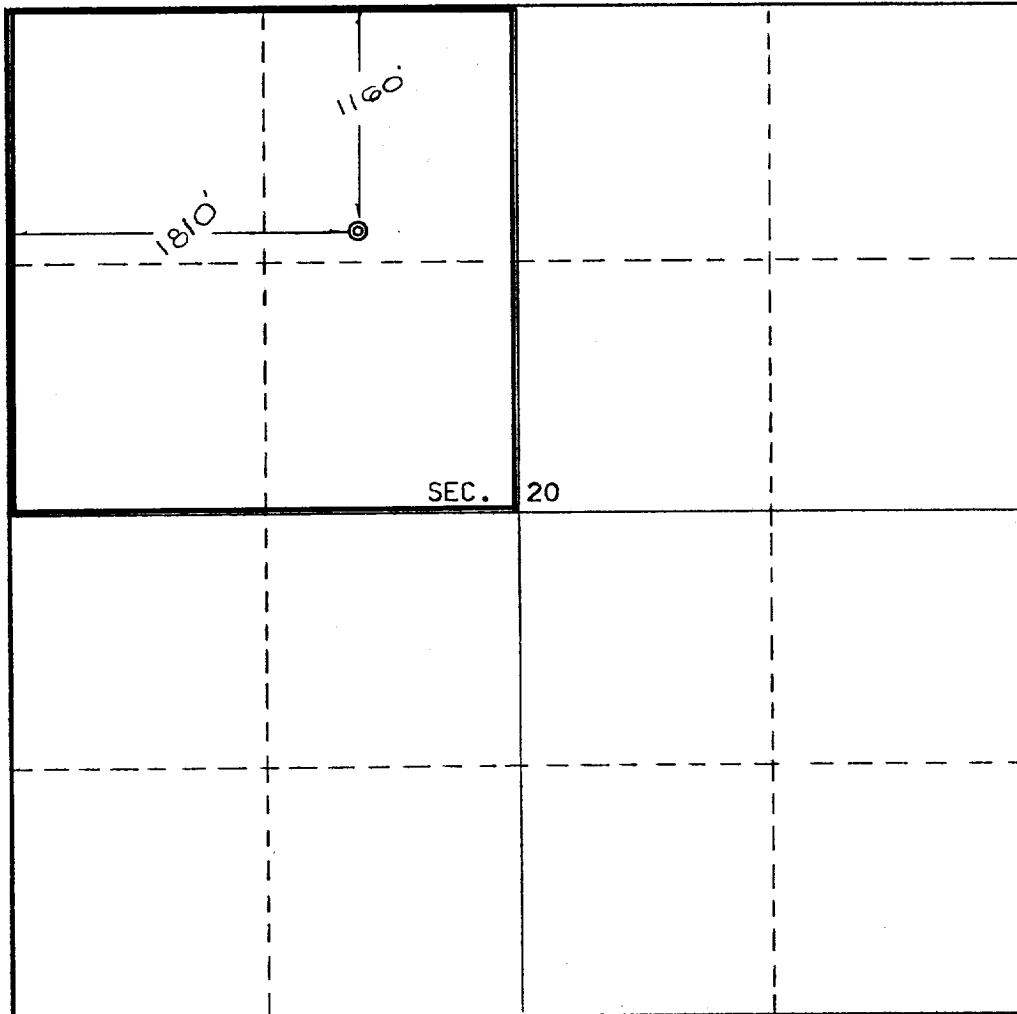
Operator <b>DUGAN PRODUCTION CORPORATION</b>			Lease <b>Mike</b>		Well No. <b>1</b>
Unit Letter <b>C</b>	Section <b>20</b>	Township <b>26 North</b>	Range <b>12 West</b>	County <b>San Juan</b>	
Actual Footage Location of Well: <b>1160</b> feet from the <b>North</b> line and <b>1810</b> feet from the <b>West</b> line					
Ground Level Elev. <b>5996</b>	Producing Formation <b>Pictured Cliffs</b>		Pool <b>Wildcat</b>		Dedicated Acreage: <b>160</b> Acres

1. Outline the acreage dedicated to the subject well by colored pencil or hachure marks on the plat below.
2. If more than one lease is dedicated to the well, outline each and identify the ownership thereof (both as to working interest and royalty).
3. If more than one lease of different ownership is dedicated to the well, have the interests of all owners been consolidated by communitization, unitization, force-pooling, etc?

☐ Yes    ☐ No    If answer is "yes," type of consolidation \_\_\_\_\_

If answer is "no," list the owners and tract descriptions which have actually been consolidated. (Use reverse side of this form if necessary.) \_\_\_\_\_

No allowable will be assigned to the well until all interests have been consolidated (by communitization, unitization, forced-pooling, or otherwise) or until a non-standard unit, eliminating such interests, has been approved by the Commission.

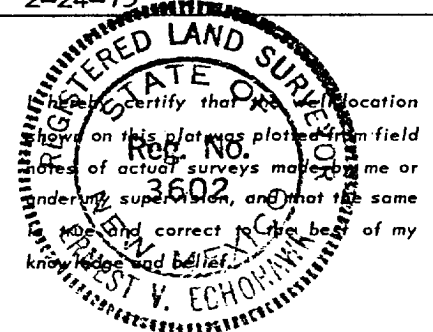


**CERTIFICATION**

*I hereby certify that the information contained herein is true and complete to the best of my knowledge and belief.*

**Original signed by T. A. Dugan**

Name
<b>Thomas A. Dugan</b>
Position
<b>Petroleum Engineer</b>
Company
<b>Dugan Production Corp.</b>
Date
<b>2-24-75</b>



Date Surveyed
<b>February 1, 1975</b>
Registered Professional Engineer and/or Land Surveyor

*E.V. Echowhawk*

Certificate No. **3602**  
**E.V. Echowhawk LS**

